

A Double-Edged Kinase Lyn: A Positive and Negative Regulator for Antigen Receptor-mediated Signals

By Hirofumi Nishizumi,^{*†} Keisuke Horikawa,^{*}
Irena Mlinaric-Rascan,^{*} and Tadashi Yamamoto^{*}

From the ^{*}Department of Oncology, Institute of Medical Science, The University of Tokyo, Tokyo 108-8639, Japan; and the [†]Department of Biophysics and Biochemistry, Graduate School of Science, The University of Tokyo, Tokyo 113-0033, Japan

Summary

B cells from young *lyn*^{-/-} mice are hyperresponsive to anti-IgM-induced proliferation, suggesting involvement of Lyn in negative regulation of B cell antigen receptor (BCR)-mediated signaling. Here we show that tyrosine phosphorylation of FcγRIIB and CD22 coreceptors, which are important for feedback suppression of BCR-induced signaling, was severely impaired in *lyn*^{-/-} B cells upon their coligation with the BCR. Hypophosphorylation on tyrosine residues of these molecules resulted in failure of recruiting the tyrosine phosphatase SHP-1 and inositol phosphatase SHIP, SH2-containing potent inhibitors of BCR-induced B cell activation, to the coreceptors. Consequently, *lyn*^{-/-} B cells exhibited defects in suppressing BCR-induced Ca²⁺ influx and proliferation. Thus, Lyn is critically important in tyrosine phosphorylation of the coreceptors, which is required for feedback suppression of B cell activation.

The Src family protein-tyrosine kinase, Lyn, is highly expressed in hematopoietic cells. Lyn physically associates with the BCR in B cells and with FcεRI in mast cells, and is rapidly activated upon cross-linking of the antigen receptors (1–3). Lyn interacts with and phosphorylates a number of substrates, such as the Syk kinase (4, 5), HS1 protein (6, 7), and Cbl protooncogene product (8). Taken together, Lyn is thought to play important roles in the antigen receptor-mediated positive signaling.

Recently, however, two groups reported that B cells from young *lyn*^{-/-} mice were hyperresponsive to anti-IgM-induced proliferation due in part to the impairment of FcγRIIB-mediated feedback suppression of the B cell antigen receptor (BCR) signaling (9, 10). Therefore, it is suggested that Lyn may play some roles in the antigen receptor-mediated negative signaling, too. In this study, using splenic B cells or bone marrow-derived mast cells (BMMCs) from *lyn*^{-/-} mice, we addressed molecular mechanisms by which the Lyn kinase would act as a key regulator of antigen receptor signaling.

Materials and Methods

Cells and Cell Culture. All *lyn*^{-/-} mice had been back-crossed at least six generations to C57BL/6J. Splenic B cells were isolated from 6–8-wk-old mice by T cell depletion with anti-Thy 1.2 mAb and with rabbit complement, followed by Percoll gradient purification (11). The resulting cells were >85% B220⁺ as determined by FACS[®] (Becton Dickinson, Mountain View, CA) anal-

ysis. BMMCs were obtained from bone marrow cells cultured with IL-3 for at least 4 wk as described (12).

Proliferative Responses. For proliferation assay, B cells (10⁵/well) were cultured in 96-well flat-bottomed tissue culture plates either alone or in the presence of goat F(ab')₂ anti-IgM (Cappel, Durham, NC) or intact anti-IgM (Southern Biotechnology Assoc., Inc., Birmingham, AL). Cultured cells were pulse-labeled and assayed as described (13). All assays were performed in triplicate with <20% variation among assays.

Qualification of Total Ig by ELISA. Amounts of each Ig isotype in sera and in culture supernatants were determined by ELISA with antibodies specific for each membrane-bound Ig (mIg) isotype (13).

Immunoprecipitation and Immunoblotting. For the activation of B cells, splenic B cells were treated with goat F(ab')₂ anti-IgM (Cappel) or intact anti-IgM (Southern Biotechnology Assoc., Inc.) for 2 min at 37°C. For the activation of mast cells, BMMCs were sensitized for 1 h with antidinitrophenyl (anti-DNP) monoclonal IgE (10 μg/ml; Sigma Chemical Co., St. Louis, MO) followed by stimulation for 2 min at 37°C with 30 ng/ml DNP-conjugated human serum albumin (DNP-HSA; resulting in FcεRI cross-linking; Sigma Chemical Co.), or DNP-HSA/rabbit anti-HSA IgG immune complexes (resulting in FcγRII coligation to FcεRI). The stimulated splenic B cells (10⁷) or BMMCs (10⁷) were lysed in TNE (1% [vol/vol] Nonident P-40, 50 mM Tris-HCl [pH 8], 20 mM EDTA, and 0.2 mM sodium orthovanadate with aprotinin at 10 μg/ml) buffer and subjected to immunoprecipitation/immunoblotting using SDS-7.5% PAGE as described (14). Antibodies used in these experiments were 2.4G2 mAb (PharMingen, San Diego, CA), anti-FcγRIIB (α-mβ1, gift from J.V. Ravetch, The Rockefeller University, New York),

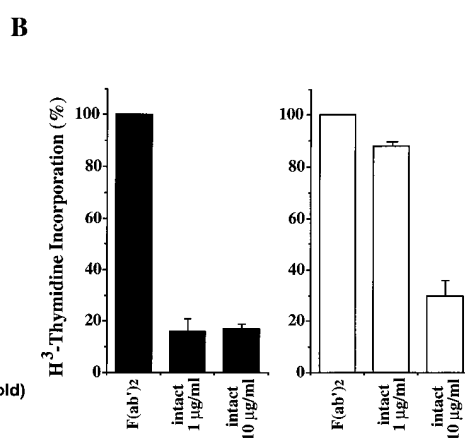
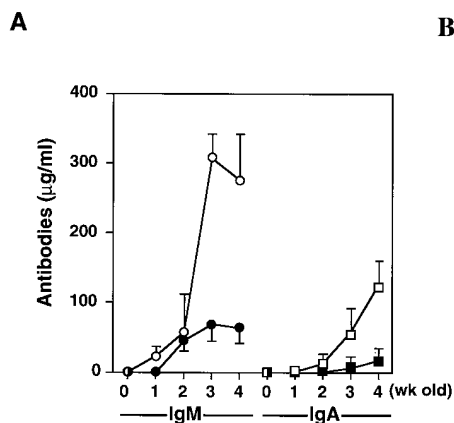


Figure 1. (A) Serum levels of IgM and IgA in unimmunized infant mice. Wild-type mice (closed circles) and *lyn*^{-/-} mice (open circles) were bled at 0–4 wk of age. Concentrations of IgM and IgA in their serum were determined by isotype-specific ELISA (13). Averages of the results from three experiments are shown. (B) Relative proliferative responses to BCR cross-linking. Splenic B cells from wild-type (left) or *lyn*^{-/-} (right) mice were cultured with goat F(ab')₂ anti-IgM (5 µg/ml) or goat intact anti-IgM (1 or 10 µg/ml). After 42 h of incubation, cells were pulse labeled for 6 h with [³H]thymidine, and [³H]thymidine incorporation was determined (13). All assays were performed in triplicate. The proliferative responses were presented with [³H]thymidine incorporation expressed as a percentage of the response against F(ab')₂ anti-IgM stimulation.

anti-CD22 (gift from E.A. Clark, University of Washington, Seattle, WA), anti-SHP-1 (Santa Cruz Biotechnology, Santa Cruz, CA), and anti-SHIP (gift from M.N. Lioubin, Fred Hutchinson Cancer Research Center, Seattle, WA). Biotinylated 4G10 antiphosphotyrosine antibody (Upstate Biotechnology Inc., Lake Placid, NY) was used to detect phosphorylated proteins in the immunoblotting experiments. The blots were treated with horseradish peroxidase (HRPO)-streptavidin, and then antibody-reacted bands were visualized by the use of enhanced chemiluminescence detection system (Amersham, Co., Arlington Heights, IL).

FcR Cross-linking and Degranulation Assay. FcεRI-triggered mast cell activation was induced by 1 h of sensitization with 10 µg/ml biotinylated mouse IgE, followed by cross-linking with 10 µg/ml streptavidin (0% of FcγRII coligation). FcγRII was coligated to FcεRI by adding biotinylated anti-FcγRII monoclonal antibody (biotin-2.4G2) at the sensitization step (100% of FcγRII coligation). A mixture of biotinylated/nonbiotinylated 2.4G2 (1/9 for 10% or 1/99 for 1% coligation) was used to vary the extent of

FcγRII coligation. The degree of degranulation was determined by measuring the release of β-hexosaminidase as described (12).

Measurement of Internal Ca²⁺ Concentration. Splenic B cells and IgE-sensitized BMDCs from *lyn*^{+/+} and *lyn*^{-/-} mice were incubated with 3 µM Fura-2/acetoxymethyl (AM; Dojindo, Osaka, Japan) in PBS containing 20 mM Hepes (pH 7.2), 5 mM glucose, 0.025% BSA, and 1 mM CaCl₂ at 37°C for 45 min. After the reaction, the cells were resuspended in 500 µl of the same buffer at 2 × 10⁶ cells/ml in a stirring cuvette. Then, by using CAF-110 fluorescence spectrophotometer (JASCO, Osaka, Japan), emission at 500 nm was monitored after excitation of the sample with two different wavelengths (340 and 380 nm).

Results and Discussion

lyn^{-/-} mice, generated by gene targeting, exhibit splenomegaly as they age. The enlarged spleen accumulates un-

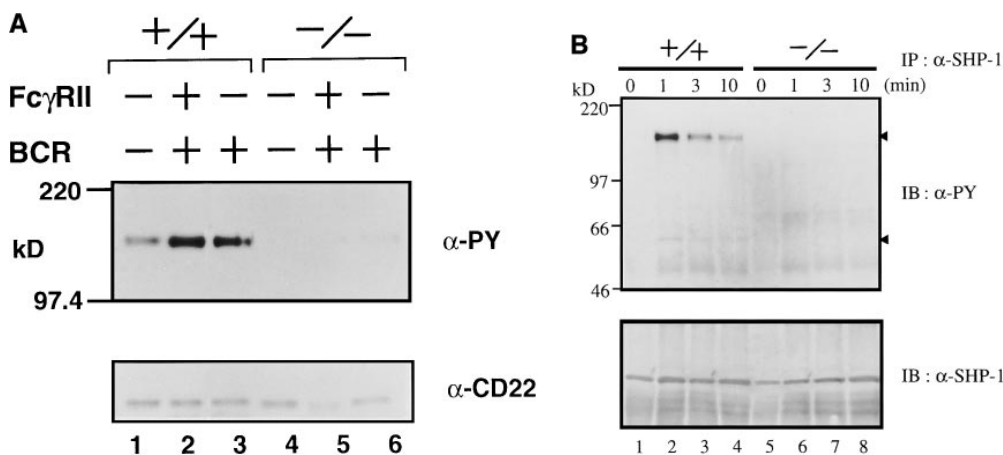


Figure 2. (A) Anti-IgM-induced tyrosine phosphorylation of CD22. Splenic B cells were stimulated with F(ab')₂ anti-IgM (30 µg/ml) (lanes 3 and 6) or intact anti-IgM (50 µg/ml) (lanes 2 and 5). Anti-CD22 immunoprecipitates from the cell lysates were probed with α-PY (phosphotyrosine antibody; top) or anti-CD22 antibody (bottom) by immunoblotting. (B) Anti-IgM-induced tyrosine phosphorylation of SHP-1 and its associated molecules. Splenic B cells were stimulated with intact anti-IgM (50 µg/ml) for indicated times. Anti-SHP-1 immunoprecipitates from the cell lysates were probed with antiphosphotyrosine monoclonal antibody 4G10 (α-PY) by immunoblotting. About 150-kD proteins (upper arrowhead) coimmunoprecipitated with SHP-1 (lower arrowhead) corresponded to CD22.

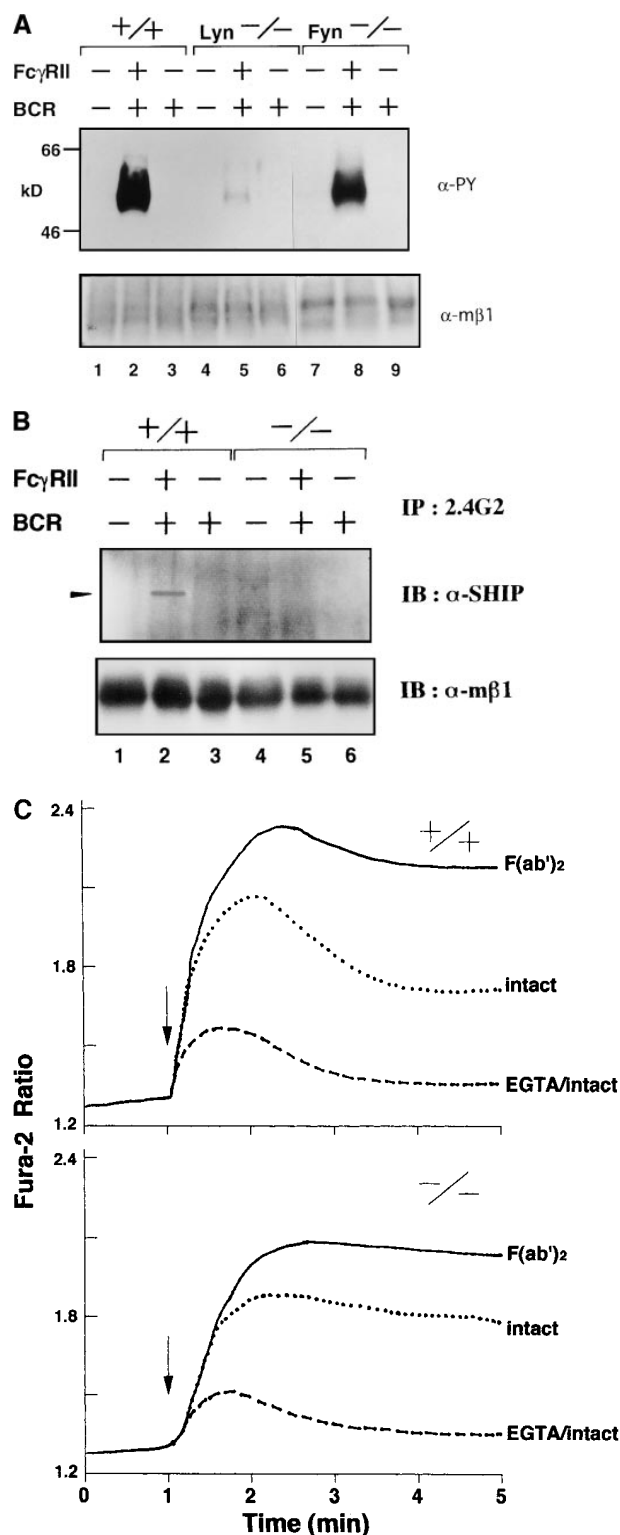


Figure 3. (A) Anti-IgM-induced tyrosine phosphorylation of Fc γ RIIB. Splenic B cells from wild-type (lanes 1–3), *lyn*^{-/-} (lanes 4–6), or *fyn*^{-/-} (lanes 7–9) mice were stimulated with F(ab')₂ anti-IgM (30 μ g/ml; lanes 3, 6, and 9) or intact anti-IgM (50 μ g/ml; lanes 2, 5, and 8) for 2 min. Proteins were immunoprecipitated with 2.4G2 anti-Fc γ RIIB monoclonal antibody from the cell lysates, and the precipitates were probed with α -PY (top) or anti-Fc γ RIIB antibody (α -m β 1; bottom) by immunoblotting. (B) Recruitment of SHIP to Fc γ RIIB. Splenic B cells from wild-type (lanes 1–3) or *lyn*^{-/-} (lanes 4–6) mice were stimulated with F(ab')₂

usual lymphoblast-like cells and plasma cells (13, 15). *lyn*^{-/-} mice with splenomegaly contain high concentrations of serum IgM and IgA, and often develop glomerulonephritis due to the production of autoreactive antibodies (13, 15). The lymphoblast-like cells are IgM⁺, IgD⁺, CD5⁻, Mac-1⁺, CD23⁻, B220⁺, and IL-5R⁺, and are therefore B-1b-like cells. These cells produce spontaneously a large amount of the antibodies. However, we found that serum levels of IgM and IgA were extremely high in *lyn*^{-/-} mice compared to wild-type mice even at their early ages (<1 mo old) when the lymphoblast-like cells did not yet accumulate (Fig. 1 A). This suggests that Lyn is involved in negative regulation of antibody production by the normal B cells.

In vitro cross-linking of the BCR on resting B cells induces a proliferative response. The response is prominent only when F(ab')₂ anti-IgM is used as a stimulating antibody, whereas intact anti-IgM fails to fully activate B cells. This is due to the inhibitory signals induced by coligation of the BCR and Fc γ RIIB, a low-affinity immunoglobulin G receptor (16, 17). In contrast to wild-type B cells, *lyn*^{-/-} B cells from young mice (<6 wk old) were highly responsive to the intact anti-IgM, exhibiting a proliferation level similar to that with F(ab')₂ anti-IgM. The data suggest that the *lyn*^{-/-} B cells are defective in Fc γ RIIB-mediated suppression of BCR signaling (9, 10, and Fig. 1 B). Furthermore, the disorders of *lyn*^{-/-} mice, such as the hyperresponse to proliferation after BCR ligation and high concentrations of serum Igs, are found in mice lacking Fc γ RIIB (18). Moreover, the phenotypes of mice deficient in SHP-1, an SH2-containing protein tyrosine phosphatase (19, 20), or CD22, a B-lineage specific surface molecule (21–24), overlap those of *lyn*^{-/-} mice. Note that both SHP-1 and CD22 participate in the feedback suppression of BCR signaling, and that tyrosine phosphorylation of immunoreceptor tyrosine-based inhibitory motifs (ITIMs; reference 25) of CD22 and Fc γ RIIB is involved in the suppression (26–28). The expression levels of SHP-1, CD22, and Fc γ RIIB in *lyn*^{-/-} mice did not differ from those in wild-type mice (data not shown). Therefore, the inhibitory signalings through SHP-1, CD22, and Fc γ RIIB are likely related to Lyn kinase activity.

Upon stimulation of the BCR, CD22 and SHP-1 become rapidly tyrosine-phosphorylated (29) and associate with one another (30–32). To determine whether Lyn is involved in the tyrosine phosphorylation of CD22 and SHP-1, we immunoprecipitated these proteins from the lysates of BCR-cross-linked splenic B cells and probed the immunoprecipitates with antiphosphotyrosine antibody. As shown in Fig. 2 A, tyrosine phosphorylation of CD22 was

anti-IgM (30 μ g/ml; lanes 3 and 6) or intact anti-IgM (50 μ g/ml; lanes 2 and 5) for 2 min. Anti-Fc γ RIIB (2.4G2) immunoprecipitates from the cell lysates were probed with anti-SHIP antibodies by immunoblotting. (C) Time course of Ca²⁺ flux in splenic B cells upon BCR coligation to Fc γ RIIB. Panels show real time Fura-2 ratios (340/380) for splenic B cells of wild-type mice (top) and *lyn*^{-/-} mice (bottom). Splenic B cells were stimulated with F(ab')₂ anti-IgM (5 μ g/ml; line), intact anti-IgM (10 μ g/ml; dotted line), or intact anti-IgM (10 μ g/ml) in the presence of 1.5 mM EGTA (perforated line).

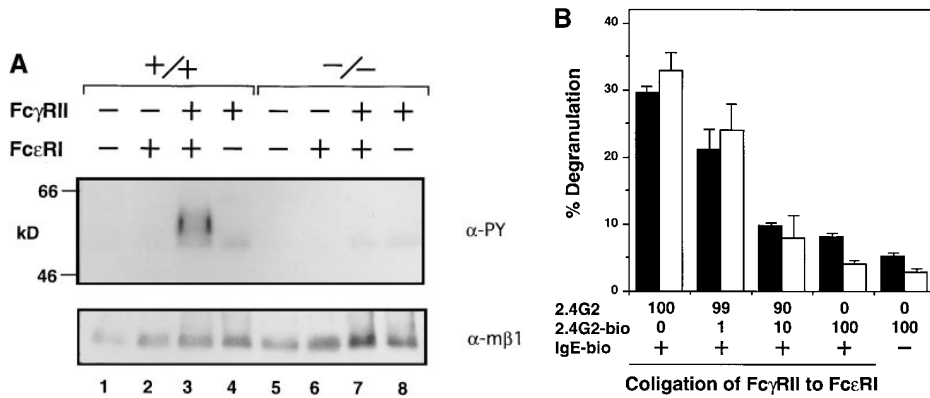


Figure 4. (A) Tyrosine phosphorylation of FcγRIIB upon FcεRI and FcγRIIB coligation. BMMCs from wild-type (lanes 1–4), *lyn*^{-/-} (lanes 5–8) mice were sensitized with anti-DNP monoclonal IgE (10 μg/ml) followed by stimulation for 2 min at 37°C with 30 ng/ml DNP-HSA (FcεRI cross-linking; lanes 2 and 6), or DNP-HSA/rabbit anti-HSA IgG immune complexes (FcγRII coligation to FcεRI; lanes 3 and 7). BMMCs were stimulated with DNP-HSA/rabbit anti-HSA IgG immune complexes without IgE sensitization (lanes 4 and 8). Anti-FcγRIIB (2.4G2) immunoprecipitates from the cell lysates were probed with α-PY (top) or

anti-FcγRIIB antibody (α-mβ1) (bottom) by immunoblotting. (B) Inhibitory effect of FcγRIIB coligation to FcεRI in *lyn*^{-/-} BMMCs. The mast cell was sensitized with biotinylated mouse IgE, followed by cross-linking with streptavidin (no FcγRII coligation). FcγRIIB was coligated to FcεRI by adding biotinylated anti-FcγRII monoclonal antibody (biotin-2.4G2) at the sensitization step (100% FcγRII coligation). A mixture of biotinylated/nonbiotinylated 2.4G2 (1/9 for 10% or 1/99 for 1% coligation) was used to vary the extent of FcγRII coligation. The degree of degranulation was determined by measuring the release of β-hexosaminidase as described (12). *Closed columns*, the results of wild-type mice; *open columns*, the results of *lyn*^{-/-} mice. Standard errors of triplicate samples are indicated on each column.

extremely impaired in *lyn*^{-/-} B cells (lanes 5 and 6), as compared with that in wild-type B cells (lanes 2 and 3). A level of tyrosine phosphorylation of SHP-1 was also low, and association of CD22 with SHP-1 was poor in the absence of Lyn (Fig. 2 B and data not shown).

Next, we examined the level of tyrosine phosphorylation of anti-FcγRIIB immunoprecipitates prepared from the lysates of wild-type and *lyn*^{-/-} splenic B cells on which FcγRIIB and BCR had been cross-linked. Immunoblot analysis of the precipitates with antiphosphotyrosine antibody (Fig. 3 A) showed a very low level of tyrosine phosphorylation of FcγRIIB in the absence of Lyn. The recruitment of SHIP, an inositol phosphatase important for the feedback suppression (26–28), from cytoplasm to membrane was also impaired in *lyn*^{-/-} B cells (Fig. 3 B). Accordingly, the magnitude of BCR-induced calcium influx was less affected by coligated FcγRIIB in *lyn*^{-/-} B cells than in wild-type B cells (Fig. 3 C). Moreover, as mentioned above, the proliferative response to BCR cross-linking was not suppressed by coligated FcγRIIB in *lyn*^{-/-} B cells (Fig. 1 B). Thus, in the case of B cells, Lyn is directly involved in the feedback suppression mechanisms as well as in the BCR positive signaling. The controversial observation that B cells from relatively older *lyn*^{-/-} mice are hyporeactive to BCR stimulation (13, 15) may suggest that negative signaling pathways are differently tuned with age.

The similarities between the BCR- and FcεRI-mediated signaling prompted us to examine whether tyrosine phosphorylation of FcγRIIB coligated with FcεRI was impaired in *lyn*^{-/-} mast cells. As shown in Fig. 4 A, tyrosine phosphorylation of coligated FcγRIIB was suppressed in the *lyn*^{-/-} BMMCs. This likely results in the failure of recruitment of SHIP and/or SHP-1 to the ITIM of FcγRIIB, leading to the lack of suppression of FcεRI signaling by the inhibitory coreceptor. However, in both wild-type and *lyn*^{-/-} BMMCs, the calcium response after IgE cross-linking was similarly suppressed by coligation of FcγRIIB with FcεRI-IgE complexes (data not shown). Furthermore,

coligation of FcγRIIB with FcεRI-IgE complexes with increasing amounts of the cross-linking antibody resulted in increasing inhibition of degranulation, as measured by β-hexosaminidase release, in both wild-type and *lyn*^{-/-} BMMCs (Fig. 4 B). Coligation of FcγRIIB with FcγRIII on both wild-type and *lyn*^{-/-} BMMCs also inhibited receptor-triggered degranulation (the pair columns at the foremost right in Fig. 4 B). These results suggest that, unlike the case with the B cells, the negative signaling pathways appear to function similarly in wild-type and *lyn*^{-/-} BMMCs.

The apparent contradiction between B cells and mast cells with regard to the FcγRIIB feedback function may be due to differences in their FcγRIIB-mediated signalings. Such differences could produce the cell-type specific balance between the positive and negative signalings. Present data together with previous observations (9, 10, 12, 13, 15) indicate that positive signaling is less affected than negative signaling in *lyn*^{-/-} B cells, and vice versa in *lyn*^{-/-} mast cells. The balance of the positive and negative signalings in *lyn*^{-/-} cells could well be influenced by some other Src-like kinases and Syk kinase expressed in the cells. In B cells, the imbalance induced by *lyn* deficiency seems to severely affect the immune responses. As a consequence, *lyn*^{-/-} mice, which have lost the control of positive and negative signalings, exhibit abnormal phenotypes such as hyperactivation of B cells (9, 10) and elevated serum levels of IgM and IgA (13, 15), resulting in development of autoimmune disease (13, 15).

Our data show that Lyn is critically involved in tyrosine phosphorylation of particular proteins such as CD22 and FcγRIIB that are involved in the feedback regulation in B cells and/or BMMCs (for review see references 33–35). Lyn is also important in tyrosine phosphorylation of immunoreceptor tyrosine-based activation motif (ITAM) family of proteins and the proteins involved in positive regulation of the BCR and FcεRI signaling events (4, 5, 12, 13, 15, 36). The other membrane molecules with the putative ITIMs

have been described (37, 38). These include KIR on NK cells, glycoprotein 49B and MAFA-1 on mast cells, and CD23 and CD72 on B cells. To understand the molecular basis of the balance of the positive and negative signalings, it is important to address what kinases preferentially ty-

rosine phosphorylate and regulate these molecules. The candidates include the Src family kinases, JAK kinases, Tec family kinases, and Syk/ZAP-70 kinases. The balance, of course, could be affected by the absence of a critical kinase(s).

We thank J.V. Ravetch (Rockefeller University, New York), M. Ono (Rockefeller University, New York), E.A. Clark (University of Washington, Seattle, WA), and M.N. Lioubin (Fred Hutchinson Cancer Research Center, Seattle, WA) for antibodies, and A. Tanaka and Y. Yamanashi for critical reading of the manuscript.

This work was supported by grants from the Ministry of Education, Science, Sports and Culture of Japan, Human Frontier Science Program Organization, and Japan Society for the Promotion of Science.

Address correspondence to Tadashi Yamamoto, Department of Oncology, Institute of Medical Science, The University of Tokyo, Shirokanedai 4-6-1, Minato-ku, Tokyo 108-8639, Japan. Phone: 81-3-5449-5301; Fax: 81-3-5449-5413; E-mail: tyamamot@ims.u-tokyo.ac.jp

Received for publication 22 October 1997 and in revised form 28 January 1998.

References

1. Burkhardt, A.L., M. Brunswick, J.B. Bolen, and J.J. Mond. 1991. Anti-immunoglobulin stimulation of B lymphocytes activates *src*-related protein kinases. *Proc. Natl. Acad. Sci. USA.* 88:7410-7414.
2. Yamanashi, Y., T. Kakiuchi, J. Mizuguchi, T. Yamamoto, and K. Toyoshima. 1991. Association of B cell antigen receptor with protein tyrosine kinase Lyn. *Science.* 251:192-194.
3. Eisenman, E., and J.B. Bolen. 1992. Engagement of the high-affinity IgE receptor activates *src*-protein-related tyrosine kinases. *Nature.* 355:78-80.
4. Kurosaki, T., M. Takata, Y. Yamanashi, T. Inazu, T. Taniguchi, T. Yamamoto, and H. Yamamura. 1994. Syk activation by the Src-family tyrosine kinase in the B cell receptor signaling. *J. Exp. Med.* 179:1725-1729.
5. Sidorenko, S.P., C.-L. Law, K.A. Chandran, and E.A. Clark. 1995. Human spleen tyrosine kinase p72^{Syk} associates with the Src-family p53/56^{Lyn} and a 120-kDa phosphoprotein. *Proc. Natl. Acad. Sci. USA.* 92:359-363.
6. Yamanashi, Y., M. Okada, T. Semba, T. Yamori, H. Umemori, S. Tsunasawa, K. Toyoshima, D. Kitamura, T. Watanabe, and T. Yamamoto. 1993. Identification of HS1 protein as a major substrate of protein-tyrosine kinase(s) upon B-cell antigen receptor-mediated signaling. *Proc. Natl. Acad. Sci. USA.* 90:3631-3635.
7. Yamanashi, Y., T. Fukuda, H. Nishizumi, T. Inazu, K. Higashi, D. Kitamura, T. Ishida, H. Yamamura, T. Watanabe, and T. Yamamoto. 1997. Role of tyrosine phosphorylation of HS1 in B cell antigen receptor-mediated apoptosis. *J. Exp. Med.* 185:1387-1392.
8. Tezuka, T., H. Umemori, N. Fusaki, T. Yagi, M. Takata, T. Kurosaki, and T. Yamamoto. 1996. Physical and functional association of the *abl* protooncogene product with an Src-family protein tyrosine kinase, p53/56^{Lyn}, in the B cell antigen receptor-mediated signaling. *J. Exp. Med.* 183:675-680.
9. Wang, J., T. Koizumi, and T. Watanabe. 1996. Altered antigen receptor signaling and impaired Fas-mediated apoptosis of B cells in Lyn-deficient mice. *J. Exp. Med.* 184:831-838.
10. Chan, V.W., F. Meng, P. Soriano, A.L. DeFranco, and C.A. Lowell. 1997. Characterization of the B lymphocyte populations in Lyn-deficient mice and the role of Lyn in signaling initiation and down-regulation. *Immunity.* 7:69-81.
11. Nathanson, S.D., P.L. Zamfirescu, S.I. Drew, and S. Wilbur. 1977. Two-step separation of human peripheral blood monocytes on discontinuous density gradients of colloidal silica-polyvinylpyrrolidone. *J. Immunol. Methods.* 18:225-234.
12. Nishizumi, H., and T. Yamamoto. 1997. Impaired tyrosine phosphorylation and Ca²⁺ mobilization, but not degranulation, in *lyn*-deficient bone marrow-derived mast cells. *J. Immunol.* 158:2350-2355.
13. Nishizumi, H., I. Taniuchi, Y. Yamanashi, D. Kitamura, D. Ilic, S. Mori, T. Watanabe, and T. Yamamoto. 1995. Impaired proliferation of peripheral B cells and indication of autoimmune disease in *lyn*-deficient mice. *Immunity.* 3:549-560.
14. Yamanashi, Y., Y. Fukui, B. Wongsasant, Y. Kinoshita, Y. Ichimori, K. Toyoshima, and T. Yamamoto. 1992. Activation of Src-like protein-tyrosine kinase Lyn and its association with phosphatidylinositol 3-kinase upon B-cell antigen receptor-mediated signaling. *Proc. Natl. Acad. Sci. USA.* 89:1118-1122.
15. Hibbs, M.L., D.M. Tarlinton, J. Armes, D. Grail, G. Hodgson, R. Maglito, S.A. Stacker, and A.R. Dunn. 1995. Multiple defects in the immune system of Lyn-deficient mice, culminating in autoimmune disease. *Cell.* 83:301-311.
16. Doody, G.M., P.W. Dempsey, and D.T. Fearon. 1996. Activation of B lymphocytes: integrating signals from CD19, CD22 and FcγRIIb1. *Curr. Opin. Immunol.* 8:378-382.
17. Ravetch, J.V. 1994. Fc receptors: rubor redux. *Cell.* 78:553-560.
18. Takai, T., M. Ono, M. Hikida, H. Ohmori, and J.V. Ravetch. 1996. Augmented humoral and anaphylactic responses in FcγRII-deficient mice. *Nature.* 379:346-349.
19. D'Ambrosio, D., K.L. Hippen, S.A. Minskoff, I. Mellman, G. Pani, K.A. Siminovitch, and J.C. Cambier. 1995. Recruitment and activation of PTP1C in the negative regulation of antigen receptor signaling by FcγRIIb1. *Science.* 268:293-297.
20. Pani, G., M. Kozłowski, J.C. Cambier, G.B. Mills, and K.A. Siminovitch. 1995. Identification of the tyrosine phosphatase PTP1C as a B cell antigen receptor-associated protein involved in the regulation of B cell signaling. *J. Exp. Med.* 181:2077-2084.

21. O'Keefe, T.L., G.T. Williams, S.L. Davies, and M.S. Neuberger. 1996. Hyperresponsive B cells in CD22-deficient mice. *Science*. 274:798–801.
22. Otipoby, K.L., K.B. Anderson, K.E. Draves, S.J. Klaus, A.G. Garr, J.D. Kerner, R.M. Perlmutter, C.-L. Law, and E.A. Clark. 1996. CD22 regulates thymus independent responses and the lifespan of B cells. *Nature*. 384:634–637.
23. Sato, S., A.S. Miller, M. Inaoki, C.B. Bock, P.J. Jansen, M.L. Tang, and T.F. Tedder. 1996. CD22 is both a positive and negative regulator of B lymphocyte antigen receptor signal transduction: altered signaling in CD22-deficient mice. *Immunity*. 5:551–562.
24. Nitschke, L., R. Caresetti, B. Ocker, G. Kohler, and M.C. Lamers. 1997. CD22 is a negative regulator of B-cell receptor signaling. *Curr. Biol*. 7:133–143.
25. Muta, T., T. Kurosaki, Z. Misulovin, M. Sanchez, M.C. Nussenzweig, and J.V. Ravetch. 1994. A 13-amino-acid motif in the cytoplasmic domain of Fc γ RIIB modulates B-cell receptor signaling. *Nature*. 368:70–73.
26. Ono, M., S. Bolland, P. Tempst, and J.V. Ravetch. 1996. Role of the inositol phosphatase SHIP in negative regulation of the immune system by the receptor Fc γ RIIB. *Nature*. 383:263–266.
27. Scharenberg, A.M., and J.P. Kinet. 1996. The emerging field of receptor-mediated inhibitory signaling: SHP or SHIP? *Cell*. 87:961–964.
28. Ono, M., H. Okada, S. Bolland, S. Yanagi, T. Kurosaki, and J.V. Ravetch. 1997. Deletion of SHIP or SHP-1 reveals two distinct pathways for inhibitory signaling. *Cell*. 90:293–301.
29. Schulte, R.J., M.A. Campbell, W.H. Fischer, and B.M. Sefton. 1992. Tyrosine phosphorylation of CD22 during B cell activation. *Science*. 258:1001–1004.
30. Campbell, M.A., and N.R. Klinman. 1995. Phosphotyrosine-dependent association between CD22 and protein tyrosine phosphatase 1C. *Eur. J. Immunol*. 25:1573–1579.
31. Doody, G.M., L.B. Justement, C.C. Delibrias, R.J. Matthews, J. Kin, M.L. Thomas, and D.T. Fearon. 1995. A role in B cell activation for CD22 and the protein tyrosine phosphatase SHP. *Science*. 269:242–244.
32. Law, C.L., S.P. Sidorenko, K.A. Chandran, Z. Zhao, S.H. Shen, E.H. Fischer, and E.A. Clark. 1996. CD22 associates with protein tyrosine phosphatase 1C, Syk, and phospholipase C- γ 1 upon B cell activation. *J. Exp. Med*. 183:547–560.
33. Cyster, J.G., and C.C. Goodnow. 1997. Tuning antigen receptor signaling by CD22: integrating cues from antigens and the microenvironment. *Immunity*. 6:509–517.
34. Daeron, M. 1997. Fc receptor biology. *Annu. Rev. Immunol*. 15:203–234.
35. Tedder, T.F., J. Tuscano, S. Sato, and J.H. Kehrl. 1997. CD22, a B lymphocyte-specific adhesion molecule that regulates antigen receptor signaling. *Annu. Rev. Immunol*. 15:481–504.
36. Schmitz, R., G. Baumann, and H. Gram. 1996. Catalytic specificity of phosphotyrosine kinases Blk, Lyn, c-Src and Syk as assessed by phage display. *J. Mol. Biol*. 260:664–677.
37. Cambier, J.C. 1997. Inhibitory receptors abound? *Proc. Natl. Acad. Sci. USA*. 94:5993–5995.
38. Unkeless, J.C., and J. Jin. 1997. Inhibitory receptors, ITIM sequences and phosphatases. *Curr. Opin. Immunol*. 9:338–343.