

# Deletion of Fc $\gamma$ Receptor IIB Renders H-2<sup>b</sup> Mice Susceptible to Collagen-induced Arthritis

By Takae Yuasa,<sup>\*†</sup> Satoshi Kubo,<sup>\*</sup> Tadashi Yoshino,<sup>§</sup> Azusa Ujike,<sup>\*†</sup> Kimio Matsumura,<sup>\*</sup> Masao Ono,<sup>\*†</sup> Jeffrey V. Ravetch,<sup>||</sup> and Toshiyuki Takai<sup>\*†</sup>

From the <sup>\*</sup>Department of Experimental Immunology, Institute of Development, Aging and Cancer, Tohoku University, Sendai 980-8575, Japan; the <sup>†</sup>Core Research for Evolutional Science and Technology (CREST), Japan Science and Technology Corporation (JST), Tokyo 101-0062, Japan; the <sup>§</sup>Second Department of Pathology, Okayama University Medical School, Okayama 700-8558, Japan; and the <sup>||</sup>Laboratory of Molecular Genetics and Immunology, The Rockefeller University, New York 10021

## Summary

Autoimmune diseases, like rheumatoid arthritis, result from a dysregulation of the immune response culminating in hyperactivation of effector cells leading to immune-mediated injury. To maintain an appropriate immune response and prevent the emergence of autoimmune disease, activation signals must be regulated by inhibitory pathways. Biochemical and genetic studies indicate that the type IIB low-affinity receptor for immunoglobulin (Ig)G (Fc $\gamma$ RIIB) inhibits cellular activation triggered through antibody or immune complexes and may be an important component in preventing the emergence of autoimmunity. To investigate the role of Fc $\gamma$ RIIB in the development of type II collagen (CII)-induced arthritis (CIA), a model for rheumatoid arthritis in humans, we have examined its contribution in determining the susceptibility to CIA in the nonpermissive H-2<sup>b</sup> haplotype. H-2<sup>b</sup> mice immunized with bovine CII do not develop appreciable disease. In contrast, immunization of the Fc $\gamma$ RIIB-deficient, H-2<sup>b</sup> mice with bovine CII induced CIA at an incidence of 42.2%. The maximal arthritis index of the Fc $\gamma$ RIIB-deficient mice developing CIA ( $6.9 \pm 3.6$ ) was comparable to that of DBA/1 mice ( $8.6 \pm 1.9$ ), an H-2<sup>a</sup> strain susceptible for CIA induction. IgG1, IgG2a, and IgG2b antibody responses against CII were elevated in the Fc $\gamma$ RIIB-deficient animals, especially in those mice showing arthritis, but less pronounced than DBA/1 mice. Histological examinations of the arthritic paws from Fc $\gamma$ RIIB-deficient mice revealed that cartilage was destroyed and bone was focally eroded in association with marked lymphocyte and monocyte/macrophage infiltration, very similar to the pathologic findings observed in DBA/1 mice. These results indicate that a nonpermissive H-2<sup>b</sup> haplotype can be rendered permissive to CIA induction through deletion of Fc $\gamma$ RIIB, suggesting that Fc $\gamma$ RIIB plays a critical role in suppressing the induction of CIA.

**Key words:** collagen-induced arthritis • autoimmunity • Fc receptor • gene targeting • macrophage

The Fc receptors (FcRs) for Igs constitute a family of hematopoietic cell surface molecules that include receptors which can either stimulate or inhibit cellular responses upon binding of antibody-antigen complexes (for reviews, see references 1–6). Triggering the activation receptors, Fc $\gamma$ RI and III or Fc $\epsilon$ RI elicits a variety of effector functions, including phagocytosis (7–9), antibody-dependent cell-mediated cytotoxicity (10–13), and the release of inflammatory mediators (for reviews, see references 1 and

2). Analysis of FcR-deficient mice has revealed the central roles these receptors play in the mechanism of initiating type I, II, and III hypersensitivity reactions. In vivo, the binding of antibody-antigen complexes to their cognate FcRs is both necessary and sufficient to trigger anaphylaxis (11, 12, 14–16), autoimmune hemolytic anemia and thrombocytopenia (13), the Arthus reaction (17–19), and autoimmune glomerulonephritis (20). In addition, the interaction of cytotoxic antitumor antibodies with FcRs is

a necessary prerequisite for mediating the in vivo activity of these molecules (21).

These activation responses are modulated by the type IIB FcR for IgG (Fc $\gamma$ RIIB),<sup>1</sup> the most widely expressed FcR. Fc $\gamma$ RIIB suppresses B cell, mast cell, and macrophage activation triggered by cross-linking B cell receptor (BCR) or FcRs (22–25). Disruption of Fc $\gamma$ RIIB by gene targeting resulted in mice with elevated Ig levels in response to both thymus-dependent and thymus-independent antigens, enhanced passive cutaneous anaphylaxis reaction (26), and enhanced immune complex (IC)-mediated alveolitis (25). These studies indicate that Fc $\gamma$ RIIB physiologically acts as a negative regulator of IC-triggered activation (26) and may function in vivo to suppress autoimmunity by regulating both B cell responses and effector cell activation.

Collagen-induced arthritis (CIA), a model for rheumatoid arthritis (RA) in humans, is a chronic inflammatory arthropathy that can be induced in susceptible rodents by immunization with native type II collagen (CII [27–31]). The histopathology of this arthritis is characterized by a proliferative synovitis that erodes the adjacent cartilage, ultimately producing articular injury and ankylosis. Detailed investigations of the immune responses to CII have been undertaken to determine the precise sequence of events leading to CIA. The development of arthritis is thought to be associated with the synergistic effect of high levels of cell-mediated and humoral immunity to CII (27, 29, 30). CIA and RA are clearly associated with the MHC region (32), and in mice only H-2<sup>q</sup> and H-2<sup>r</sup> haplotypes are susceptible to CIA (33, 34). The responsible gene in the H-2<sup>q</sup> haplotype has been isolated and codes for the A<sup>q</sup> class II molecule (35), which binds peptides derived from CII, thus leading to T cell activation which is of crucial importance for development of arthritis in this model (36, 37). In addition, a strong B cell response is activated in CIA, producing IgG directed towards CII-specific structures (28, 38). There is evidence that these antibodies are directly pathogenic, as shown by transfer experiments (39, 40), as well as synergizing with activated T cells to promote the development of arthritis (41, 42). B cell-deficient mice on a susceptible background do not develop CIA, indicating that B cells play a crucial role for development of CIA (43).

In this study, we demonstrate that Fc $\gamma$ RIIB-deficient (Fc $\gamma$ RIIB<sup>-/-</sup>) mice on a nonpermissive background (H-2<sup>b</sup>) become susceptible to CIA induction upon immunization with CII. The histopathological characteristics of the arthritic paws were similar to those observed in CIA-susceptible DBA/1 mice (H-2<sup>q</sup>). Fc $\gamma$ RIIB<sup>-/-</sup> animals show augmented anti-CII IgG production, as well as elevated release of proinflammatory mediators by macrophages stimulated with IgG ICs, suggesting a mechanism for CIA induction in a nonpermissive background. These results suggest that Fc $\gamma$ RIIB normally suppresses the emergence of autoim-

mune disease, and its modulation could be a factor in determining susceptibility and disease severity in the pathogenesis of RA.

## Materials and Methods

**Animals.** Fc $\gamma$ RIIB<sup>-/-</sup> mice were generated in the 129/SvJ (H-2<sup>b</sup>) and C57BL/6 (H-2<sup>b</sup>) hybrid background as described previously (26). These mice and their wild-type counterparts (129/BL6 hybrids) were kept and bred in the Animal Unit of The Institute of Development, Aging and Cancer, an environmentally controlled and specific pathogen-free facility. DBA/1 and C57BL/6 mice were obtained from Charles River Japan, Inc. All experiments were performed on 8–12-wk-old, age-matched male mice.

**Induction of Arthritis.** Bovine CII was obtained from Collagen Gijutsu-kenshukai (Tokyo, Japan) and dissolved at a concentration of 4 mg/ml in 0.02 M Tris/0.15 M NaCl (pH 8.0) at 4°C. Mice were immunized at the tail base with 200  $\mu$ g of CII emulsified in CFA containing *Mycobacterium tuberculosis* strain H<sub>37</sub>Rv (Wako Pure Chemical Industries Ltd.) and boosted at the same location with 200  $\mu$ g CII plus IFA (Wako Pure Chemical Industries Ltd.) 21 and 42 d later. The mice were observed for the development of arthritis starting from day 16 after immunization and bled periodically for anti-CII antibody determination. The clinical severity of arthritis was quantified according to the following scoring system: 0, no change; 1, swelling in one joint (digitus, wrist, or ankle); 2, swelling in more than one joint or mild inflammation of paws; 3, severe swelling of the entire paw and/or ankylosis. Each paw was graded, so that each mouse could achieve a maximum score of 12. At the end of the experiment, joints were prepared for histopathology. Joints were examined for erosions, pannus formation, and synovium infiltrates.

**Assay for Detection of Serum Anti-CII Antibodies.** Serum antibody titers were measured by modification of an ELISA assay described previously (44). In brief, a 96-well microplate (Falcon; Becton Dickinson Labware) was coated with 50  $\mu$ l/well of a 20  $\mu$ g/ml solution of CII in PBS at 4°C overnight, washed three times with PBS containing 0.05% Tween 20 and 0.1% BSA, and then blocked with 250  $\mu$ l/well of PBS containing 0.2% BSA at 4°C overnight. The diluted serum (1:400–20,000) was added at 50  $\mu$ l/well and allowed to react at 4°C overnight. The wells were washed three times with PBS containing 0.05% Tween 20, incubated with 50  $\mu$ l of a 1:200 dilution of goat anti-mouse IgG1, IgG2a, IgG2b, or IgM coupled to horseradish peroxidase (Sigma Chemical Co.) at 4°C for 2 h, washed three times with PBS containing 0.05% Tween 20, and developed at room temperature for 30 min with 0.1 ml of TrueBlue Peroxidase Substrate (Kirkegaard & Perry Labs). The OD<sub>450</sub> was read using a microplate reader (Biolumin 960; Molecular Dynamics).

**Cytokine Production.** Mice were injected intraperitoneally with 1 ml of 5% thioglycollate, and peritoneal exudate cells were harvested 4 d later. The cells were suspended in DMEM supplemented with 10% heat-inactivated FCS, to a concentration of 10<sup>6</sup> cells/ml. The cells were plated in 24-well culture plates (Sumilon; Sumitomo Bakelite Co., Tokyo, Japan) at 1 ml/well and incubated for 1 h at 37°C in 95% air, 5% CO<sub>2</sub>. Nonadherent cells were removed by rinsing the monolayers with PBS, and the purified macrophages were subjected to the determination of IL-1 $\alpha$  release. SRBCs derivatized with TNP were coated with mouse anti-TNP IgG1 (G1 in reference 44), and then used for the stimulation of macrophages as described previously (12). For the analysis of IL-1 $\alpha$  production, the culture supernatant was collected and cytokine production determined using an ELISA plate (En-

<sup>1</sup>Abbreviations used in this paper: BCR, B cell receptor; CII, collagen type II; CIA, collagen-induced arthritis; Fc $\gamma$ RI, Fc $\gamma$ RIIB, and Fc $\gamma$ RIII, type I high-affinity Fc receptor for IgG, type IIB, and type III low-affinity receptors for IgG, respectively; IC, immune complex; RA, rheumatoid arthritis.

rogen, Inc.) according to the manufacturer. For the determination of cytokine production by lymph node cells, 11 d after CII immunization single-cell suspensions from pooled inguinal and popliteal lymph nodes from the immunized mice were made. The cells ( $10^6$  cell/well) were cultured in 96-well plates (Falcon; Becton Dickinson Labware) with heat-denatured CII (100  $\mu$ g/well). After 72 h, the supernatants were collected and subjected to determination for IFN- $\gamma$  production using an ELISA plate (Endogen, Inc.) according to the manufacturer. As a control, cells were stimulated with LPS (5  $\mu$ g/ml, O111:B4; Sigma Chemical Co.) and IFN- $\gamma$  (100 U/ml; Biosource International).

**Proliferation of Lymph Node Cells.** For cell proliferation assays, male mice were immunized with 500  $\mu$ g CII emulsified in CFA intradermally in both hind footpads, the neck, and at the base of the tail. Inguinal, popliteal, and axillary lymph nodes from the immunized mice were obtained 10 d after immunization. The tissue was minced through sterile wire mesh, resulting in single cell suspensions. Cells ( $5 \times 10^5$ /well) from immunized mice were cultured in 96-well, flat-bottomed microplates (Falcon; Becton Dickinson Labware) in the absence or presence of 5, 50, or 100  $\mu$ g/ml of CII at 37°C in 5% CO<sub>2</sub> for 4 d. During the final 18 h of culture, cells were pulsed with 0.5  $\mu$ Ci of [<sup>3</sup>H]TdR. Cells were harvested on glass fiber filters by using an automated sample harvester (Packard Japan). The incorporated radioactivity was measured with a scintillation spectrometer (Aloka Co. Ltd.). The results of the [<sup>3</sup>H]TdR incorporation assay were expressed as the mean cpm  $\pm$  SD of triplicate determinations from each of the three lymph node cell preparations derived from different mice.

**Histological Study.** The mice were killed with an overdose of diethyl ether. Their arthritic paws were removed and fixed in 10% neutral buffered formalin. The tissues were decalcified in a 5% EDTA-2Na solution. The joints were then embedded in paraffin. The specimens were cut into 6- $\mu$ m sections and stained with hematoxylin and eosin.

**Statistical Analysis.** Statistical differences between groups for onset of arthritis, the arthritic index, the mean maximum arthritis score, serum levels of antibodies, and T cell proliferation were calculated using Student's *t* test; differences in the frequency of arthritis were calculated using Fisher's test.  $P < 0.05$  was considered significant.

## Results

**Fc $\gamma$ RIIB<sup>-/-</sup> Mice in an H-2<sup>b</sup> Background Are Susceptible to CIA.** Immunization of DBA/1 mice (H-2<sup>a</sup>) with CII

results in typical and progressive polyarthritis in parallel with the production of high levels of anticollagen antibody, as described (27). Neither arthritis nor high levels of antibody are induced in BALB/c (H-2<sup>d</sup>), C3H/He (H-2<sup>k</sup>), or C57BL/6 (H-2<sup>b</sup>) mice (27, 42). Many lines of evidence indicate that CIA susceptibility is restricted to only two H-2 alleles, H-2<sup>a</sup> and H-2<sup>e</sup> (33, 34). Although the Fc $\gamma$ RIIB<sup>-/-</sup> mice were generated on H-2<sup>b</sup> background (25), a haplotype not susceptible to CIA induction, we set out to determine if deletion of this inhibitory receptor would convert a nonsusceptible strain of mice into a susceptible one. Fc $\gamma$ RIIB-deficient male mice were immunized with CII/CFA and then boosted with CII/IFA, and monitored for the occurrence of arthritis in comparison to age and sex-matched H-2<sup>b</sup> wild-type or DBA/1 mice. Three separate experiments were conducted with similar results as summarized in Table I. Fig. 1 shows the time course and severity of CIA in one such experiment. Fc $\gamma$ RIIB-deficient mice develop arthritis with a time course and severity comparable to DBA/1 mice when immunized with CII. Although the incidence of arthritis in Fc $\gamma$ RIIB-deficient mice was lower than DBA/1 (42.2 vs. 95.2%), it was dramatically enhanced compared with wild-type H-2<sup>b</sup> mice (42.2 vs. 7.0%). In those mice that developed arthritis, the mean onset of disease for Fc $\gamma$ RIIB<sup>-/-</sup> mice was comparable to that in DBA/1 controls (35.3 vs. 33.2). Similarly, the mean maximal arthritic index of the mutant animals ( $6.9 \pm 3.6$ ) was also comparable to DBA/1 controls ( $8.6 \pm 1.9$ ).

**Histopathological Features of CIA in Fc $\gamma$ RIIB<sup>-/-</sup> Mice.** Histopathological features of the CIA induced in Fc $\gamma$ RIIB<sup>-/-</sup> mice were examined (Fig. 2). The joints of nonarthritic wild-type mice appeared histologically normal, with no significant inflammatory cell infiltration or cartilage-bone destruction (Fig. 2 D). In contrast, the arthritic lesions of the Fc $\gamma$ RIIB<sup>-/-</sup> mice showed massive lymphocytic and monocyte/macrophage infiltration associated with cartilage-bone destruction (Fig. 2 E) similar to that observed in DBA/1 immunized animals (Fig. 2 F). Thus, the results obtained by histopathologic examination of Fc $\gamma$ RIIB<sup>-/-</sup> mice immunized with CII verified a destructive arthritis, which is qualitatively similar to the arthritis induced in DBA/1 mice.

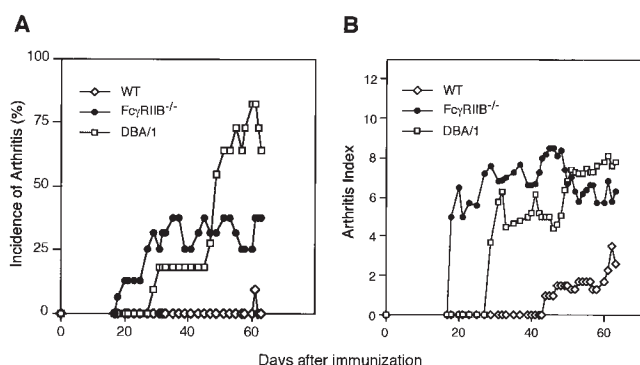
**Table I.** Summary of the CIA Course in Fc $\gamma$ RIIB<sup>-/-</sup> Mice

Mice	Incidence* (%)	Onset <sup>‡</sup>	Arthritic index <sup>‡</sup>	No. of arthritic paws* (%)
		(d)		
Wild-type	3/43 (7.0)	50.5 $\pm$ 7.6	2.3 $\pm$ 1.9	7/172 (4.1)
Fc $\gamma$ RIIB <sup>-/-</sup>	19/45 (42.2)	35.3 $\pm$ 12.5	6.9 $\pm$ 3.6	48/180 (26.7)
DBA/1	40/42 (95.2)	33.2 $\pm$ 8.6	8.6 $\pm$ 1.9	113/168 (67.3)

Mice were immunized with CII in CFA as described in Materials and Methods and monitored for signs of arthritis. Data are given as number and percentage of diseased mice for the incidence, as means  $\pm$  SD for onset and arthritic index, and as number and percentage of arthritic paws. Arthritic indices are expressed as the maximal scores reached by each arthritic mouse during the course of CIA.

\*Statistical analyses were performed using Fisher's test:  $P < 0.001$  between wild-type and Fc $\gamma$ RIIB<sup>-/-</sup> mice, and between Fc $\gamma$ RIIB<sup>-/-</sup> and DBA/1 mice.

<sup>‡</sup>Statistical analyses were performed using Student's *t* test:  $P < 0.05$  between wild-type and Fc $\gamma$ RIIB<sup>-/-</sup> mice; not significant between Fc $\gamma$ RIIB<sup>-/-</sup> and DBA/1 mice.



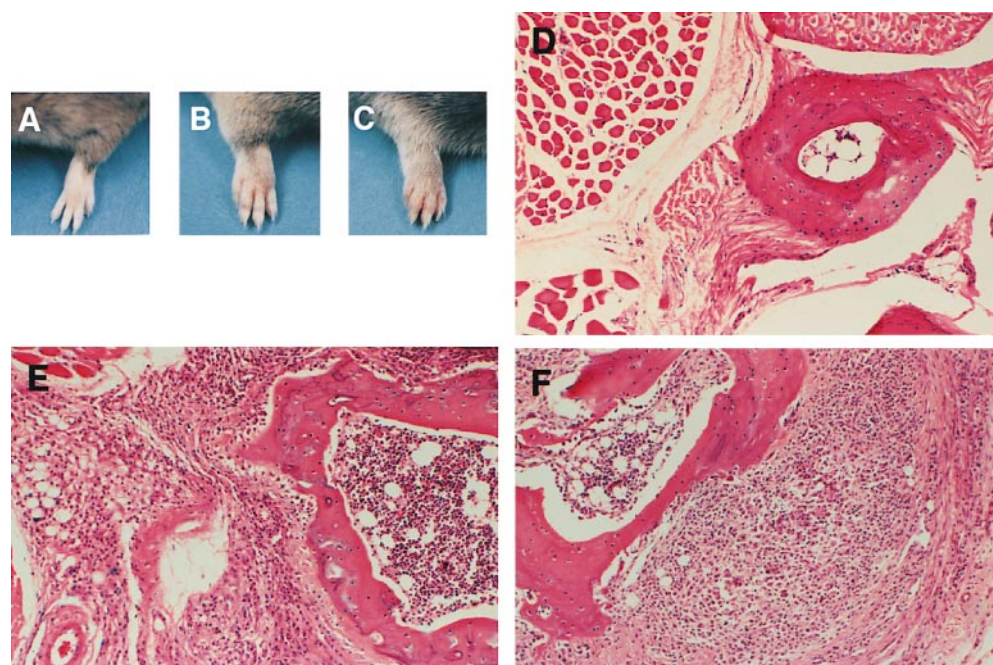
**Figure 1.** Development of CIA in mice by disruption of Fc $\gamma$ RIIB expression. Incidence of arthritis (A) and severity of clinical signs (B) in Fc $\gamma$ RIIB<sup>-/-</sup> mice (●, *n* = 16), wild-type H-2<sup>b</sup> mice of 129/B6 hybrid background (◇, *n* = 13), and DBA/1 mice (□, *n* = 11) after immunization with CII in CFA as described in Materials and Methods. Results are expressed as a percentage of arthritic mice with the arthritic index 5 (A) and as the mean arthritic scores in each group on a given day during the course of CIA (B). Representative data from three separate experiments with similar results are shown.

**Anti-CII Antibody Levels in CIA-induced Fc $\gamma$ RIIB<sup>-/-</sup> Mice.** Antibodies specific for CII play a major role in the pathogenesis of CIA (28, 38–40). We determined the collagen-specific IgG1, IgG2a, IgG2b, and IgM antibody production in the sera of Fc $\gamma$ RIIB<sup>-/-</sup> and DBA/1 immunized mice. Data derived from sera taken periodically during the experiment are presented in Fig. 3. The mean of all mice of different groups is presented regardless of whether or not the mice had developed arthritis (Fig. 3, A–D). As described previously, Fc $\gamma$ RIIB<sup>-/-</sup> mice have higher antibody levels in response to both thymic-dependent and -independent antigens. As expected, Fc $\gamma$ RIIB<sup>-/-</sup> mice had higher

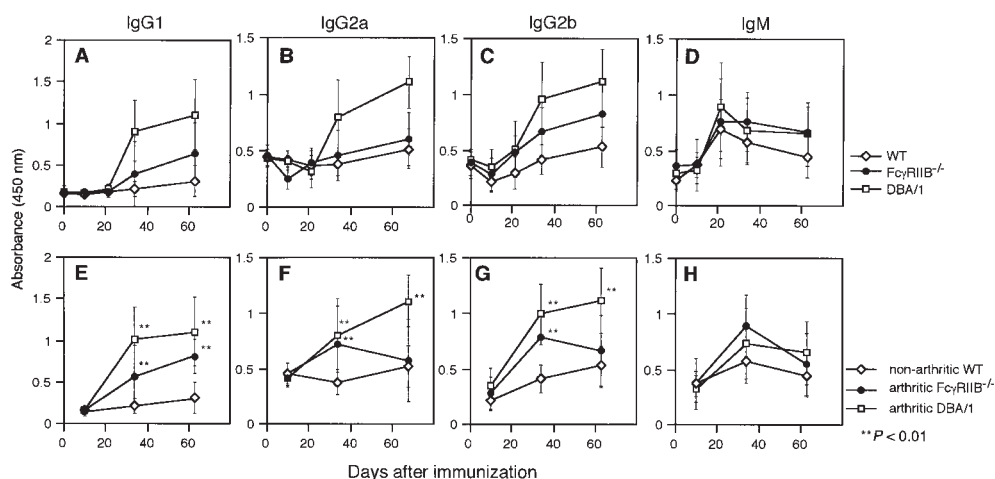
anti-CII antibody titers than those of wild-type mice for all isotypes tested. However, these responses to CII were lower than those observed in DBA/1 mice. The augmented anti-CII IgG responses in arthritic Fc $\gamma$ RIIB<sup>-/-</sup> mice were more pronounced compared with those of nonarthritic wild-type mice (Fig. 3, E–G). Therefore, this enhanced antibody response to CII in the Fc $\gamma$ RIIB<sup>-/-</sup> mice could contribute to the emergence of CIA in this nonpermissive strain.

**Proliferative Response of Lymph Node Cells from CII-primed Fc $\gamma$ RIIB<sup>-/-</sup> Mice.** Since CIA is dependent on dysregulation of both humoral and cell-mediated responses, we determined whether the absence of Fc $\gamma$ RIIB altered the phenotype of the cell-mediated immune response to CII. Therefore, we compared the specific proliferative responses and cytokine production of CII-primed lymph node cells derived from Fc $\gamma$ RIIB<sup>-/-</sup>, wild-type H-2<sup>b</sup>, and DBA/1 mice. As shown in Fig. 4, antigenic stimulation with CII induced higher levels of proliferation in DBA/1 animals and similar lower levels of specific proliferation in Fc $\gamma$ RIIB<sup>-/-</sup> and wild-type animals. Similar results were obtained when IFN- $\gamma$  production was used as a measure of specific T cell stimulation. These results indicate that disruption of Fc $\gamma$ RIIB does not appreciably modify the antigen-specific T cell response in nonpermissive animals and is not likely to account for the susceptibility of these animals to CIA.

**IL-1 $\alpha$  Production Is Enhanced in Fc $\gamma$ RIIB<sup>-/-</sup> Macrophages Stimulated with IgG-opsonized Antigen.** At later stages of autoimmune arthritis, local synthesis of cytokines such as IL-1, TNF, and other inflammatory mediators is likely to be responsible for the progression from inflammation to a destructive arthritis. Supporting this notion are studies showing that anti-TNF antibodies or an IL-1 receptor antagonist reduce cytokine production by synovium cells



**Figure 2.** Clinical and histologic presentation of CIA in Fc $\gamma$ RIIB<sup>-/-</sup> and DBA/1 mice. (A–C) The appearance of a normal forepaw from a CII-immunized wild-type mouse (A) contrasted with arthritic paws from an Fc $\gamma$ RIIB<sup>-/-</sup> animal (B) and a positive control DBA/1 mouse (C). (D–F) Cross-sections of the forefoot from a normal wild-type mouse (D) compared with an arthritic joint from Fc $\gamma$ RIIB<sup>-/-</sup> (E) and DBA/1 animals (F). Original magnifications:  $\times 50$  (D),  $\times 80$  (E),  $\times 80$  (F). D illustrates normal cartilage–bone without inflammation, whereas E and F show marked mononuclear cell infiltration with cartilage–bone destruction.



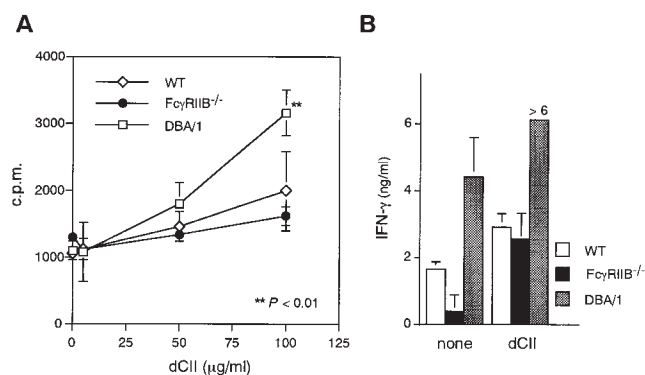
**Figure 3.** Concentration of anti-CII antibodies in sera from mice immunized with CII. The mean  $\pm$  SD antibody levels of IgG1 (A), IgG2a (B), IgG2b (C), and IgM (D) subclasses, for all animals, and the mean  $\pm$  SD of antibody levels (E–H) of arthritic DBA/1 ( $\square$ ) and Fc $\gamma$ RIIB $^{-/-}$  ( $\bullet$ ) mice and of nonarthritic wild-type mice ( $\diamond$ ) are shown. \*\* $P < 0.01$ .

from RA patients (45; for a review, see reference 31), and ameliorated arthritis in DBA/1 mice (46, 47). In several phases of joint inflammation, macrophages secrete chemoattractants for polymorphonuclear cells and monocytes (IL-6, IL-1, GM-CSF, monocyte chemoattractant protein 1, and macrophage inflammatory protein 1 $\alpha$ ) and upregulate integrins and vascular adhesion molecules through their production of IL-1 and TNF- $\alpha$  (31). Deletion of Fc $\gamma$ RIIB decreases the threshold of IC necessary to trigger mast cell and macrophage activation in vitro and in vivo (25) and could contribute to the development of CIA in nonsusceptible H-2 backgrounds by either lowering threshold response or increasing the total cytokine response. To determine if macrophages derived from Fc $\gamma$ RIIB $^{-/-}$  animals showed enhanced release of inflammatory mediators upon stimulation, we determined the levels of IL-1 $\alpha$  produced upon stimulation with IgG-opsonized SRBCs. As shown in Fig. 5, thioglycollate-elicited peritoneal macrophages from Fc $\gamma$ RIIB $^{-/-}$  mice released quantitatively more IL-1 $\alpha$

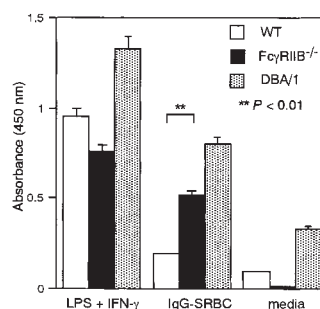
than those from wild-type controls and at levels comparable to macrophages derived from DBA/1 mice. Thus, the absence of Fc $\gamma$ RIIB makes macrophages more sensitive to stimulation with IgG ICs, and results in a higher level of secretion of a proinflammatory mediator.

## Discussion

Autoimmune disease results from the dysregulation of the normal immune response, resulting in the loss of tolerance to self-antigens, augmented T and B cell responses, and inappropriate activation of effector cell pathways. Disruption of the ability to generate T or B cell responses blocks the development of autoimmunity and autoimmune disease, while disruption of effector cell pathways attenuates disease development. However, identification of the genetic components that modulate these central pathways which could confer susceptibility to the development of disease has been stymied by the complex multigenic nature of these disorders. It has been known for some time that the MHC haplotype is one such susceptibility factor in both human and animal systems. In the murine model of RA, CIA, H-2 haplotype determines the susceptibility of an animal to the development of disease. In this study, we demonstrate that the inhibitory FcR for IgG, Fc $\gamma$ RIIB, is another susceptibility gene, functioning to suppress the development of CIA in nonsusceptible hosts. Deletion of Fc $\gamma$ RIIB converts a nonsusceptible H-2<sup>b</sup> animal to one sus-



**Figure 4.** Proliferation and IFN- $\gamma$  production of anticollagen lymph node cells in response to CII. (A) Lymph node cells ( $5 \times 10^5$ /well) were stimulated in vitro with 5, 50, or 100  $\mu$ g/ml heat-denatured CII (dCII) for 4 d. Proliferative response was determined by uptake of [ $^3$ H]TdR pulsed for the final 18 h of culturing. (B) Each of the culture supernatants at the end of the experiment in A was collected and assessed for the IFN- $\gamma$  content by ELISA. \*\* $P < 0.01$  compared with wild-type mice.



**Figure 5.** Secretion of IL-1 $\alpha$  by peritoneal macrophages stimulated with IC. Thioglycollate-elicited peritoneal macrophages from Fc $\gamma$ RIIB $^{-/-}$  (black bars) and wild-type (white bars) mice and DBA/1 mice (stippled bars) were stimulated with IgG1-opsonized SRBCs as described in Materials and Methods. The culture supernatant was analyzed for the IL-1 $\alpha$  content by ELISA.

ceptible to the development of CIA. The mechanism by which deletion of Fc $\gamma$ RIIB results in susceptibility to CIA involves augmentation of both antibody and effector cell responses, supporting a threshold model for autoimmune disease.

Association of arthritis with high levels of autoantibodies has highlighted the importance of the anticollagen antibody responses in inducing arthritis. Antiserum or purified IgG antibody to CII can transfer arthritis to the susceptible DBA/1 mice (39). This passively transferred arthritis exhibits the histopathologic characteristics of the early lesions of disease induced through immunization of susceptible hosts. The resulting disease is transient and less severe than the disease induced in immunized DBA/1 mice, suggesting that anti-CII antibodies alone are not sufficient to give rise to the full range of lesions that characterize CIA. In contrast, a typical arthritis could be induced by adoptive transfer of anti-CII antibody from arthritic DBA/1 mice together with T cells from DBA-1 mice presensitized with heat-denatured collagen (42). These results indicate the crucial importance of the synergy between humoral and cell-mediated immunities in the pathogenesis of typical arthritis (42).

A strong B cell response is activated in CIA, producing IgG directed towards CII-specific structures. There is evidence that these antibodies are pathogenic, as exemplified by transfer experiments, and promote T cell-mediated arthritis development. In contrast, levels of anti-CII autoantibodies in serum do not correlate with CIA development, as high levels can be detected in nondiseased mice. Thus, the role of B cells in both the priming and effector phases of the disease is unclear. Svensson et al. (43) reported that the B cell-deficient mice of the CIA-susceptible strains B10.Q and B10.RIII (H-2<sup>d</sup>) are resistant to CIA induction, although the anti-CII T cell reactivity does not differ between B cell-deficient and B cell-sufficient mice, thus in-

dicating a crucial role for B cells in the induction of arthritis. In the present report, we show that the anti-CII IgG antibody response is enhanced in Fc $\gamma$ RIIB<sup>-/-</sup> mice, especially in those mice exhibiting arthritis (Fig. 2), suggesting that the relatively high anti-CII IgG level could be one of the pathogenic factors, although unlikely by itself to explain the induction of disease in the H-2<sup>b</sup> background.

RA is an autoimmune disease in which macrophages are believed to play a central role (48, 49). We found that macrophages from Fc $\gamma$ RIIB<sup>-/-</sup> mice were hyperresponsive to stimulation with IgG ICs, leading to augmented release of a proinflammatory mediator, IL-1 $\alpha$  (Fig. 5), that is able to upregulate integrins and vascular adhesion molecules. At later stages of autoimmune arthritis, local synthesis of cytokines is probably responsible for progression of inflammation to a destructive arthritis (46, 47). Thus, the heightened sensitivity of macrophages to ICs is likely another pathogenic factor making Fc $\gamma$ RIIB<sup>-/-</sup> mice more susceptible to CIA than control mice.

The present study thus suggests that the development of autoimmune disease represents the dysregulation of both humoral and effector pathways. The contribution of each component may be below a critical threshold to result in the development of disease, as has been suggested by the genetic studies in the NZB/NZW F<sub>1</sub> autoimmune glomerulonephritis model (20). Fc $\gamma$ RIIB is a pleiotropic receptor, functioning to downregulate both B cell and effector cell responses. The finding that deletion of Fc $\gamma$ RIIB converts nonsusceptible H-2<sup>b</sup> mice into susceptible animals for CIA suggests that a similar role may be found in other autoimmune disease models and in human susceptibility to autoimmune disease. Therefore, strategies that result in the upregulation of this receptor and its signaling would represent potential new therapeutic approaches to the treatment of autoimmune diseases.

---

We are grateful to Drs. M. Sasano (Santen Pharmaceuticals Co.) and H. Ohmori (Okayama University) for helpful discussions, and to N. Takagi for secretarial support.

This work is supported by research grants from the Ministry of Education, Science, Sports and Culture of Japan, and Core Research for Evolutional Science and Technology (CREST), Japan Science and Technology Corporation (JST) (to T. Takai), and by grants from the National Institutes of Health and the Juvenile Diabetes Foundation (to J.V. Ravetch).

Address correspondence to Toshiyuki Takai, Department of Experimental Immunology, Institute of Development, Aging and Cancer, Tohoku University, 4-1 Seiryō, Sendai 980-8575, Japan. Phone: 81-22-717-8501; Fax: 81-22-717-8505; E-mail: [tostakai@idac.tohoku.ac.jp](mailto:tostakai@idac.tohoku.ac.jp)

Received for publication 8 October 1998 and in revised form 26 October 1998.

## References

1. Ravetch, J.V., and J.-P. Kinet. 1991. Fc receptors. *Annu. Rev. Immunol.* 9:457-492.
2. Metzger, H. 1992. The receptor with high affinity for IgE. *Immunol. Rev.* 125:37-48.
3. Fridman, W.H., C. Bonnerot, M. Daëron, S. Amigorena, J.L. Teillaud, and C. Sautès. 1992. Structural bases of Fc $\gamma$  receptor functions. *Immunol. Rev.* 125:49-76.
4. van de Winkel, J.G.J., and P.J.A. Capel. 1993. Human IgG

- Fc receptor heterogeneity: molecular aspects and clinical implications. *Immunol. Today*. 14:215–221.
5. Ravetch, J.V. 1994. Fc receptors: rubor redux. *Cell*. 78:553–560.
  6. Takai, T., and J.V. Ravetch. 1999. Fc receptor genetics and the manipulation of genes in the study of FcR biology. In *Immunoglobulin Receptors and Their Physiological and Pathological Roles in Immunity*. J.G.J. van de Winkel and P.M. Hogarth, editors. Kluwer Academic Publishers Group, Netherlands. In press.
  7. Greenberg, S., P. Chang, and S.C. Silverstein. 1993. Tyrosine phosphorylation is required for Fc receptor-mediated phagocytosis in mouse macrophages. *J. Exp. Med.* 177:529–534.
  8. Crowley, M.T., P.S. Costello, C.J. Fitzer-Attas, M. Turner, F. Meng, C. Lowell, V.L.J. Tybulewicz, and A.L. DeFranco. 1997. A critical role for Syk in signal transduction and phagocytosis mediated by Fc $\gamma$  receptors on macrophages. *J. Exp. Med.* 186:1027–1039.
  9. Gavin, A.L., N. Bames, H.M. Dijkstra, and P.M. Hogarth. 1998. Identification of the mouse IgG3 receptor: implications for antibody effector function at the interface between innate and adaptive immunity. *J. Immunol.* 160:20–23.
  10. Fanger, N.A., D. Voigtlaender, C. Liu, S. Swink, K. Wardwell, J. Fisher, R.F. Graziano, L.C. Pfefferkorn, and P.M. Guyre. 1997. Characterization of expression, cytokine regulation, and effector function of the high affinity IgG receptor Fc gamma RI (CD64) expressed on human blood dendritic cells. *J. Immunol.* 158:3090–3098.
  11. Hazenbos, W.L.W., J.E. Gessner, F.M.A. Hofhuis, H. Kuipers, D. Meyer, I.A.F.M. Heijnen, R.E. Schmidt, M. Sandor, P.J.A. Capel, M. Däeron, et al. 1996. Impaired IgG-dependent anaphylaxis and Arthus reaction in Fc $\gamma$ RIII (CD16) deficient mice. *Immunity*. 5:181–188.
  12. Takai, T., M. Li, D. Sylvestre, R. Clynes, and J.V. Ravetch. 1994. FcR  $\gamma$  chain deletion results in pleiotrophic effector cell defects. *Cell*. 76:519–529.
  13. Clynes, R., and J.V. Ravetch. 1995. Cytotoxic antibodies trigger inflammation through Fc receptors. *Immunity*. 3:21–26.
  14. Dombrowicz, D., V. Flamand, K.K. Brigman, B.H. Koller, and J.-P. Kinet. 1993. Abolition of anaphylaxis by targeted disruption of the high affinity immunoglobulin E receptor  $\alpha$  chain gene. *Cell*. 75:969–976.
  15. Miyajima, I., D. Dombrowicz, T.R. Martin, J.V. Ravetch, J.P. Kinet, and S.J. Galli. 1997. Systemic anaphylaxis in the mouse can be mediated largely through IgG1 and Fc $\gamma$ RIII. Assessment of the cardiopulmonary changes, mast cell degranulation, and death associated with active or IgE- or IgG1-dependent passive anaphylaxis. *J. Clin. Invest.* 99:901–914.
  16. Dombrowicz, D., V. Flamand, I. Miyajima, J.V. Ravetch, S.J. Galli, and J.-P. Kinet. 1997. Absence of Fc $\epsilon$ RI  $\alpha$  chain results in upregulation of Fc $\gamma$ RIII-dependent mast cell degranulation and anaphylaxis. Evidence of competition between Fc $\epsilon$ RI and Fc $\gamma$ RIII for limiting amounts of FcR  $\beta$  and  $\gamma$  chain. *J. Clin. Invest.* 99:915–925.
  17. Sylvestre, D.L., and J.V. Ravetch. 1994. Fc receptors initiate the Arthus reaction: redefining the inflammatory cascade. *Science*. 265:1095–1098.
  18. Sylvestre, D.L., and J.V. Ravetch. 1996. A dominant role for mast cell Fc receptors in the Arthus reaction. *Immunity*. 5:387–390.
  19. Sylvestre, D., R. Clynes, M. Ma, H. Warren, M.C. Carroll, and J.V. Ravetch. 1996. Immunoglobulin G-mediated inflammatory responses develop normally in complement-deficient mice. *J. Exp. Med.* 184:2385–2392.
  20. Clynes, R., C. Dumitru, and J.V. Ravetch. 1998. Uncoupling of immune complex formation and kidney damage in autoimmune glomerulonephritis. *Science*. 279:1052–1054.
  21. Clynes, R., Y. Takechi, Y. Moroi, A. Houghton, and J.V. Ravetch. 1998. Fc receptors are required in passive and active immunity to melanoma. *Proc. Natl. Acad. Sci. USA*. 95: 652–656.
  22. Daëron, M., S. Latour, O. Malbec, E. Espinosa, P. Pina, S. Pasmans, and W.H. Fridman. 1995. The same tyrosine-based inhibition motif, in the intracytoplasmic domain of Fc $\gamma$ RIIB, regulates negatively BCR-, TCR-, and FcR-dependent cell activation. *Immunity*. 3:635–646.
  23. Muta, T., T. Kurosaki, Z. Misulovin, M. Sanchez, M.C. Nussenzweig, and J.V. Ravetch. 1994. A 13-amino-acid motif in the cytoplasmic domain of Fc $\gamma$ RIIB modulates B-cell receptor signalling. *Nature*. 368:70–73.
  24. Ono, M., S. Bolland, P. Tempst, and J.V. Ravetch. 1996. Role of the inositol phosphatase SHIP in negative regulation of the immune system by the receptor Fc $\gamma$ RIIB. *Nature*. 383: 263–266.
  25. Clynes, R., J.S. Maizes, R. Guinamard, M. Ono, T. Takai, and J.V. Ravetch. 1999. Modulation of immune complex-induced inflammation in vivo by the coordinate expression of activation and inhibitory Fc receptors. *J. Exp. Med.* 189: 179–185.
  26. Takai, T., M. Ono, M. Hikida, H. Ohmori, and J.V. Ravetch. 1996. Augmented humoral and anaphylactic responses in Fc $\gamma$ RII-deficient mice. *Nature*. 379:346–349.
  27. Courtenay, J.S., M.J. Dallman, A.D. Dayan, A. Marten, and B. Mosedale. 1980. Immunization against heterologous type II collagen induces arthritis in mice. *Nature*. 283:666–668.
  28. Holmdahl, R., L. Jansson, D. Gullberg, K. Rubin, P.O. Forsberg, and L. Klareskog. 1985. Incidence of arthritis and autoreactivity of anti-collagen antibodies after immunization of DBA/1 mice with heterologous and autologous collagen II. *Clin. Exp. Immunol.* 62:639–646.
  29. Trentham, D.E., A.S. Townes, and A.H. Kang. 1977. Autoimmunity to type II collagen: an experimental model of arthritis. *J. Exp. Med.* 146:857–868.
  30. Trentham, D.E., A.S. Townes, A.H. Kang, and J.R. David. 1978. Humoral and cellular sensitivity to collagen in type II collagen-induced arthritis in rats. *J. Clin. Invest.* 61:89–96.
  31. Feldmann, M., F.M. Brennan, and R.N. Maini. 1996. Rheumatoid arthritis. *Cell*. 85:307–310.
  32. Nabozny, G.H., J.M. Baisch, S. Cheng, D. Cosgrove, M.M. Griffiths, H.S. Luthra, and C.S. David. 1996. HLA-DQ8 transgenic mice are highly susceptible to collagen-induced arthritis: a novel model for human polyarthritis. *J. Exp. Med.* 183:27–37.
  33. Wooley, P.H., H.S. Luthra, J.M. Stuart, and S.C. David. 1981. Type II collagen-induced arthritis in mice. I. Major histocompatibility complex (I-region) linkage and antibody correlates. *J. Exp. Med.* 154:688–700.
  34. Wooley, P.H., H.S. Luthra, M.M. Griffiths, J.M. Stuart, A. Huse, and C.S. David. 1985. Type II collagen-induced arthritis in mice. IV. Variations in immunogenetic regulation provide evidence for multiple arthritogenic epitopes on the collagen molecule. *J. Immunol.* 135:2443–2451.
  35. Brunsberg, U., K. Gustafson, L. Jansson, E. Michaëlsson, L.

- Ährlund-Richter, S. Petterson, R. Mattsson, and R. Holmdahl. 1994. Expression of transgenic class II Ab gene confers susceptibility to collagen-induced arthritis. *Eur. J. Immunol.* 24:1698–1702.
36. Ranges, G.E., S. Sriram, and S.M. Cooper. 1985. Prevention of type II collagen-induced arthritis by *in vivo* treatment with anti-L3T4. *J. Exp. Med.* 162:1105–1110.
37. Chiocchia, G., M.C. Boissier, and C. Fournier. 1991. Therapy against murine collagen-induced arthritis with T cell receptor V $\beta$ -specific antibodies. *Eur. J. Immunol.* 21:2899–2905.
38. Mo, J., A. Scheynius, and R. Holmdahl. 1994. Antibody recognition of mouse cartilage *in vivo*; epitope- and idiotype-specific binding and inhibition. *Scand. J. Immunol.* 39:122–130.
39. Stuart, J.M., and F.J. Dixon. 1983. Serum transfers of collagen-induced arthritis in mice. *J. Exp. Med.* 158:378–392.
40. Holmdahl, R., M. Andersson, T.J. Goldshmidt, K. Gustafsson, L. Jansson, and J.A. Mo. 1990. Type II collagen autoimmunity in animals and provocations leading to arthritis. *Immunol. Rev.* 118:193–232.
41. Holmdahl, R., C. Vingsbo, V. Malmström, L. Jansson, and M. Holmdahl. 1994. Chronicity of arthritis induced with homologous type II collagen (CII) in rats is dependent on anti-CII B-cell activation. *J. Autoimmun.* 7:739–752.
42. Seki, N., Y. Sudo, T. Yoshioka, S. Sugihara, T. Fujitsu, S. Sakuma, T. Ogawa, T. Hamaoka, H. Senoh, and H. Fujiwara. 1988. Type II collagen-induced murine arthritis. Induction and perpetuation of arthritis require synergy between humoral and cell-mediated immunity. *J. Immunol.* 140:1477–1484.
43. Svensson, L., J. Jirholt, R. Holmdahl, and L. Jansson. 1998. B cell-deficient mice do not develop type II collagen-induced arthritis (CIA). *Clin. Exp. Immunol.* 111:521–526.
44. Ohmori, H., N. Hase, M. Hikida, T. Takai, and N. Endo. 1992. Enhancement of antigen-induced interleukin 4 and IgE production by specific IgG1 in murine lymphocytes. *Cell. Immunol.* 145:299–310.
45. Brennan, F.M., D. Chantry, A. Jackson, R. Maini, and M. Feldmann. 1989. Inhibitory effect of TNF $\alpha$  antibodies on synovial cell interleukin-1 production in rheumatoid arthritis. *Lancet.* 2:244–247.
46. Thorbecke, G.J., R. Shah, C.H. Leu, A.P. Kuruvilla, A.M. Hardison, and M.A. Palladino. 1992. Involvement of endogenous tumour necrosis factor  $\alpha$  and transforming growth factor  $\beta$  during induction of collagen type arthritis in mice. *Proc. Natl. Acad. Sci. USA.* 89:7375–7379.
47. Williams, R.O., L.J. Mason, M. Feldmann, and R.N. Maini. 1994. Synergy between anti-CD4 and anti-TNF in the amelioration of established collagen-induced arthritis. *Proc. Natl. Acad. Sci. USA.* 91:2762–2766.
48. Mulherin, D., O. Fitzgerald, and B. Bresnihan. 1996. Synovial tissue macrophage populations and articular damage in rheumatoid arthritis. *Arthritis Rheum.* 39:115–124.
49. van Lent, P.L., A.E. Holthuysen, L. van den Bresselaar, N. van Rooijen, L.B. van de Putte, and W.B. van den Berg. 1995. Role of macrophage-like synovial lining cells in localization and expression of experimental arthritis. *Scand. J. Rheumatol.* 24(Suppl. 101):83–89.