

Cell Elongation Induces Laminin $\alpha 2$ Chain Expression in Mouse Embryonic Mesenchymal Cells: Role in Visceral Myogenesis

Nand K. Relan,* Yan Yang,* Safedin Beqaj,* Jeffrey H. Miner,† and Lucia Schuger*

*Department of Pathology, Wayne State University School of Medicine, Detroit, Michigan 48201, and †Department of Medicine, Renal Division, Washington University School of Medicine, St. Louis, Missouri 63110

Abstract. Bronchial smooth muscle (SM) mesenchymal cell precursors change their shape from round to spread/elongated while undergoing differentiation. Here we show that this change in cell shape induces the expression of laminin (LM) $\alpha 2$ chain not present in round mesenchymal cells. LM $\alpha 2$ expression is reversible and switched on and off by altering the cell's shape in culture. In comparison, the expression of LM $\beta 1$ and $\gamma 1$ remains unchanged. Functional studies showed that mesenchymal cell spreading and further differentiation into SM are inhibited by an antibody against LM $\alpha 2$. *Dy/dy* mice express very low levels of LM $\alpha 2$ and exhibit congenital muscular dystrophy. Lung SM cells isolated from adult *dy/dy* mice spread defectively and syn-

thesized less SM α -actin, desmin, and SM-myosin than controls. These deficiencies were completely corrected by exogenous LM-2. On histological examination, *dy/dy* mouse airways and gastrointestinal tract had shorter SM cells, and lungs from *dy/dy* mice contained less SM-specific protein. The intestine, however, showed compensatory hyperplasia, perhaps related to its higher contractile activity. This study therefore demonstrated a novel role for the LM $\alpha 2$ chain in SM myogenesis and showed that its decrease in *dy/dy* mice results in abnormal SM.

Key words: laminin • smooth muscle • myogenesis • *dy/dy* mice • lung

LAMININS (LMs)¹ are heterotrimeric basement membrane glycoproteins composed of α , β and γ chains linked together by disulfide bonds in a cruciform tertiary structure. The first LM identified, referred to as LM-1, is composed of $\alpha 1$, $\beta 1$, and $\gamma 1$ chains (Timpl et al., 1979; Burgeson et al., 1994). LM-2, also known as merosin, was isolated as a protein present in basement membranes of human placenta (Leivo and Engvall, 1988) and is composed of $\alpha 2$, $\beta 1$, and $\gamma 1$ chains (Burgeson et al., 1994). In addition to forming part of LM-2, LM $\alpha 2$ chain binds covalently to LM $\beta 2$ and $\gamma 1$ chains to form LM-4 (Burgeson et al., 1994). LM-2 is the predominant isoform in striated muscle fiber basement membranes and is essential for skeletal muscle development and stability (Vachon et al., 1996).

The human LM $\alpha 2$ chain gene (*Lama2*) was localized to chromosome 6q22-23 (Vuolteenaho et al., 1994). Mutations in the LM $\alpha 2$ chain gene cause autosomal recessive congenital muscular dystrophies in humans and in *dy/dy*

mice (Hillaire et al., 1994; Sunada et al., 1994; Xu et al., 1994a,b). These mutations result in very low levels of normal LM $\alpha 2$ chain (Sunada et al., 1994; Xu et al., 1994b), or in synthesis of truncated chains (Xu et al., 1994a) which in turn lead to severely defective muscle basement membranes (Xu et al., 1994b). Knockout of the LM $\alpha 2$ chain gene in mice by homologous recombination has confirmed its importance in skeletal muscle development and function (Miyagoe et al., 1997).

The laminin $\alpha 2$ chain is expressed in the developing and adult human and mouse lung (Vuolteenaho et al., 1994; Bernier et al., 1995; Virtanen et al., 1996; Miner et al., 1997; Schuger et al., 1997; Flores-Delgado et al., 1998) and it is deposited in the bronchial epithelial basement membrane and adjacent to the peribronchial mesenchymal cells (Virtanen et al., 1996; Wu and Santoro, 1996; N. Relan and L. Schuger, unpublished observations). During lung development, its expression lags that of the LM $\alpha 1$ chain and coincides with the period of active bronchial myogenesis (Virtanen et al., 1996). The functional role of LM $\alpha 2$ chain in the developing lung has not been elucidated, although it has been shown to facilitate attachment of lung myofibroblasts in culture (Flores-Delgado et al., 1998).

During development, embryonic cells undergo significant changes in shape, starting as round pluripotent cells and culminating in the multiple cellular configurations

Address correspondence to Lucia Schuger, Department of Pathology, Wayne State University, 540 E. Canfield, Detroit, MI 48201. Tel.: (313) 577-5651. Fax: (313) 577-0057. E-mail: lschuger@med.wayne.edu

1. *Abbreviations used in this paper:* LM, laminin; RPA, ribonuclease protection assay; SM, smooth muscle.

seen in mature tissues. Our studies (Schuger et al., 1997; Yang et al., 1998, 1999) as well as others (Leptin, 1995; Loty et al., 1995; Anastasi et al., 1997; Fernandez-Valle et al., 1997; Martin-Blanco, 1997, 1998; Bidwell et al., 1998) indicate that these changes in cell shape play an active role in the mechanistic pathways determining cell differentiation. Among the multiple factors potentially controlling cell shape, we identified LM-1 as relevant for bronchial myogenesis (Schuger et al., 1997; Yang et al., 1998). More specifically, we determined that cell spreading/elongation is essential for inducing SM differentiation (Yang et al., 1998, 1999) and that this change in cell shape is stimulated by LM α 1 chain deposition and further polymerization at the airway basement membrane site (Schuger et al., 1997; Yang et al., 1998).

Here we show that cell spreading/elongation, whether in vivo or in vitro, activates expression of the LM α 2 chain, which is absent in round cells. In addition, by blocking LM α 2 with a specific antibody, we demonstrate that, once secreted, LM α 2 promotes mesenchymal cell spreading/elongation and further SM myogenic differentiation. Our findings thus provide a potential explanation for how SM myogenesis could proceed after LM-1 in the epithelial basement membrane stimulates the first layer of mesenchymal cells to elongate and differentiate.

Since *dy/dy* mice express low levels of LM α 2 chain, we used their cells to further study the role of this LM chain in myogenesis. Here we show that lung mesenchymal cells isolated from *dy/dy* mice spread defectively in culture and synthesize less SM α -actin, desmin and SM myosin than controls. These abnormalities were completely overcome by the addition of exogenous LM-2. Furthermore, histological examination of *dy/dy* mouse tissues revealed subtle but diffuse SM cell shortening that, in the absence of compensatory muscle hyperplasia, resulted in lower levels of SM-specific proteins in immunoblots. Our studies therefore demonstrate a novel role for LM α 2 chain in visceral myogenesis. Its regulation by cell shape may contribute to a multilayered bronchial SM, and its absence may cause abnormal visceral muscle.

Materials and Methods

LMs and Antibodies

LM-1 from the mouse EHS tumor, type IV collagen, and fibronectin were purchased from Becton-Dickinson, and LM-2 was obtained from GIBCO BRL. A polyclonal rat antibody to EHS LM which recognizes LM α 1, α 2, and β 1/ γ 1 chains (LM-1/LM-2) (Schuger et al., 1997), was a gift from Dr. Amy Skubitz (University of Minnesota, Minneapolis, MN). A rat monoclonal antibody to the NH₂ terminus of mouse LM α 2 chain (Schuler and Sorokin, 1995) was obtained from Alexis Inc. A mouse monoclonal antibody to SM α -actin was obtained from Boehringer Mannheim, rabbit polyclonal antibodies to SM myosin were purchased from Biomedical Technologies, and a mouse monoclonal antibody to desmin was purchased from Dako (Carpinteria, CA). HRP-labeled secondary antibodies were purchased from Bio-Rad and normal rat IgG was purchased from Cappel.

Cells and Lung Fragments

To obtain embryonic mesenchymal cells, Crl: CD-1[®] (ICR) BR mice (Charles River) were mated and the day of finding a vaginal plug was designated as day zero of embryonic development. Lungs were removed at days 12–15 of gestation, minced, and then trypsinized into a single cell suspension, and the mesenchymal cells were isolated by differential plating as

previously described (Schuger et al., 1993). The cells were directly cultured under conditions that promoted either cell rounding or cell spreading/elongation. The cell's shape was controlled by means of three different cell culture systems: (a) mesenchymal cells were plated on 10- or 20- μ m-diam culture microsurfaces, the first to force cell rounding and the second to allow cell spreading/elongation (Yang et al., 1999). (b) Mesenchymal cells were plated on culture dishes pretreated with 0.05% poly-L-lysine or 0.05% poly-L-lysine was added to the cultures after cell spreading/elongation was completed, the first to force cell rounding and the second to allow cell spreading/elongation (Yang et al., 1998). (c) Mesenchymal cells were plated in untreated culture dishes at high density or at subconfluent densities without further treatment, the first to force cell rounding and the second to allow cell spreading (Yang et al., 1998). In some experiments, after 24 h in culture, the cells were switched from conditions that promoted cell rounding to conditions that promoted cell spreading/elongation and vice versa. In these cases all the cells were trypsinized after an additional 24 h in culture. Surface-anchored epithelial-mesenchymal cocultures (organotypic) were generated by plating at high density ($2-4 \times 10^6$ /ml) a mixture of epithelial and mesenchymal cells isolated from embryonic lungs (Schuger et al., 1995). Lung embryonic epithelial cells and intestine and kidney embryonic mesenchymal cells were used in some studies. These were also isolated by differential plating (Schuger et al., 1993) and cultured under conditions that promote cell rounding or cell elongation. To obtain adult mesenchymal cells, the lungs of adult CD-1 mice, C57BL/6J *dy/dy* mice, or C57BL/6J *+/+* normal mice (both from Jackson ImmunoResearch Laboratories) were minced in 0.1% collagenase and incubated at 37°C for 60 min. Single cell suspensions were obtained and cultures of round or spread/elongated mesenchymal cells were generated as described above. All the cultures were incubated in MEM with nonessential amino acids, 0.29 μ g/ml L-glutamine, 100 U/ml penicillin, 100 μ g/ml streptomycin, 0.25 μ g/ml amphotericin B, and 10% fetal bovine serum.

In some studies, tissues were isolated from the embryo, immediately lysed, and used for immunoblot analysis. Whole lungs were microdissected from day 10–10.5 mouse embryos. Fragments of undifferentiated, round mesenchymal cells were microdissected from the periphery of day 12 mouse embryonic lungs, and fragments of elongated mesenchymal cells were microdissected, together with epithelial cells, from the proximal/central part of day 12 lungs.

Immunoblotting and Immunoprecipitation

Cells and tissues from CD-1, C57BL/6J *dy/dy* mice and C57BL/6J *+/+* normal mice were lysed and resolved under reducing conditions by PAGE. Immunoblotting for LMs and SM proteins was then done as described (Schuger et al., 1997; Yang et al., 1998, 1999). For immunoprecipitation studies the cells were lysed and 50 μ g of sample were cleared with protein A-conjugated sepharose (Sigma) and immunoprecipitated with 1 μ g of monoclonal antibody against LM α 2 chain for 16–24 h at 4°C in a rotary shaker. The immune complex was precipitated with protein A-conjugated Sepharose and resolved by 3.5% PAGE. The samples were transferred to nitrocellulose membranes and blotted with polyclonal antibody to LM-1/LM-2 (1:100 dilution) and bands were detected by chemiluminescence as previously described (Schuger et al., 1997).

RT-PCR and Ribonuclease Protection Assay

Mesenchymal cell cultures were briefly washed with PBS, lysed with Trizol (GIBCO BRL) and total RNA was extracted and used for RT-PCR and ribonuclease protection assay (RPA). RT-PCR was performed with the GeneAmp[®] RNA PCR kit (Perkin Elmer) following the manufacturer's instructions. 25 cycles were run for amplification of β 1 and γ 1 chains and 30 for amplification of α 1, α 2 chains, α 4 and α 5 chains. The following primers were used for PCR: LM α 1 chain 5' forward primer: 5'-tgggtgtgggattcttagc-3' and 3' reverse primer: 5'-cctgacctctaccaggtg-3', LM α 2 chain 5' forward primer: 5'-gcctgccaactctgagaac-3' and 3' reverse primer: 5'-tccaagagaatgatccag-3', LM α 4 chain 5' forward primer: 5'-gccatcgaagaagtactgg-3' and 3' reverse primer: 5'-cccctgaggacactgtgtt-3', LM α 5 chain 5' forward primer: 5'-tgaaggcagaggtagcagt-3' and 3' reverse primer: 5'-gtgtctcctgctcttc-3', LM β 1 chain 5' forward primer: 5'-gttcgaggaactgctctg-3' and 3' reverse primer: 5'-tgccagtagccaggaagact-3'. LM γ 1 chain 5' forward primer: 5'-gagcttgaggacagcttg-3' and 3' reverse primer: 5'-ctgggtgtgtatgctgatg-3'.

For RPA a 356-bp LM α 2 chain fragment which was cloned in the pCR II vector (Miner et al., 1997) was linearized and transcribed in vitro using the MAXIScript kit (Ambion Inc.) and UTP α -[³²P] (400–900 Ci/mmol and 10 mCi/ml; NEN). The hybridization was carried out using an RPA

kit (Ambion Inc.) and following the manufacturer's instructions. A 256-bp GAPDH linearized fragment obtained from Ambion Inc. was used as a control. The protected RNA fragments were resolved on a 5% denaturing polyacrylamide gel and autoradiographed.

Cell Attachment and Spreading Assays

Freshly isolated lung mesenchymal cells were cultured in the presence of anti-LM $\alpha 2$ chain antibody, anti-LM $\alpha 2$ chain antibody preincubated with 10-fold excess of LM-2 (molar:molar) or IgG control. The antibody and IgG were added at concentrations of 1, 2, 5, and 10 $\mu\text{g/ml}$ to the cultures either at the time of cell plating to determine their effect on cell attachment or 40 min after plating, when attachment was completed, to determine their effect on cell spreading. The cultures were maintained for 2 and 4 h for cell attachment studies and for 4 and 24 h for cell spreading studies. At the end of the culture period the cells were either fixed or lysed. Fixed cells were counted and their diameters were determined on images projected on a computer screen with the aid of a digitized pad and the image analysis program Optimas 5.1. (Schuger et al., 1995). Statistical significance was determined by the Student's *t* test. Lysed cells were used for immunoblotting with anti-SM α actin, anti-desmin and anti-SM myosin antibodies as described above. In additional experiments mesenchymal cells were isolated from adult C57BL/6J *dy/dy* and C57BL/6J *+/+* normal mice and plated on culture dishes uncoated or coated with 10 $\mu\text{g/ml}$ of LM-2 as indicated in the manufacturer's instructions for cell attachment assays or with the same concentration of LM-1 or fibronectin. Cell attachment and spreading was then determined as just described.

Histological Studies

Lungs with trachea, stomach, and intestine from adult C57BL/6J *dy/dy*, C57BL/6J *+/+* normal mice and CD-1 mice were formalin-fixed and paraffin-embedded. 5- μm sections were mounted on glass slides and stained with hematoxylin-eosin for light microscopic examination. Since the nuclei of SM cells are proportional to the cell's length and the cell boundaries are indistinct *in vivo*, nuclear length was determined as an indicator of cell elongation. Up to 460 nuclei (lung, 216; stomach, 120; intestine, 124 nuclei) were measured as described above in sections from lung, stomach, and intestine dissected from four *dy/dy*, four C57BL/6J *+/+* and two CD-1 mice.

Immunohistochemistry

Mesenchymal cell cultures and organotypic epithelial-mesenchymal cocultures were immunostained with anti-LM $\alpha 2$ antibodies and frozen sections from *dy/dy* and normal lungs were immunostained with anti-SM α -actin following previous protocols (Schuger et al., 1997; Yang et al., 1998). Both antibodies were used at a concentration of 1 $\mu\text{g/ml}$. The corresponding secondary antibodies were used at a 1:50 dilution and the immunostaining was completed using a commercial peroxidase-anti-peroxidase kit (Dako), following the manufacturer's instructions. Fast red (red color) was used for detecting LM $\alpha 2$ and diaminobenzidine tetrahydrochloride (DAB) (brown color) was used for detecting SM α actin.

Results

LM $\alpha 2$ chain expression is prevented by cell rounding and is induced by cell spreading/elongation. Regardless of the culture system used to facilitate cell rounding or cell spreading, we consistently observed that only spread cells expressed LM $\alpha 2$ chain. Immunoblots of round and elongated lung mesenchymal cells plated on culture microspheres showed LM $\alpha 2$ chain as a protein with a M_r of ~ 350 kD present only in lysates from elongated cells (Fig. 1 A). The band was not detected during the first 4 h in culture, but progressively appeared within the next 20 h. Unlike the LM $\alpha 2$ chain, no modulations were found in expression of the LM $\beta 1$ and $\gamma 1$ chains, which was similar for both round and elongated cells. We used a monospecific antibody to confirm the identity of LM $\alpha 2$ chain. Since this antibody is not suited for immunoblotting, we used it for immunoprecipitation, followed by immunoblotting with

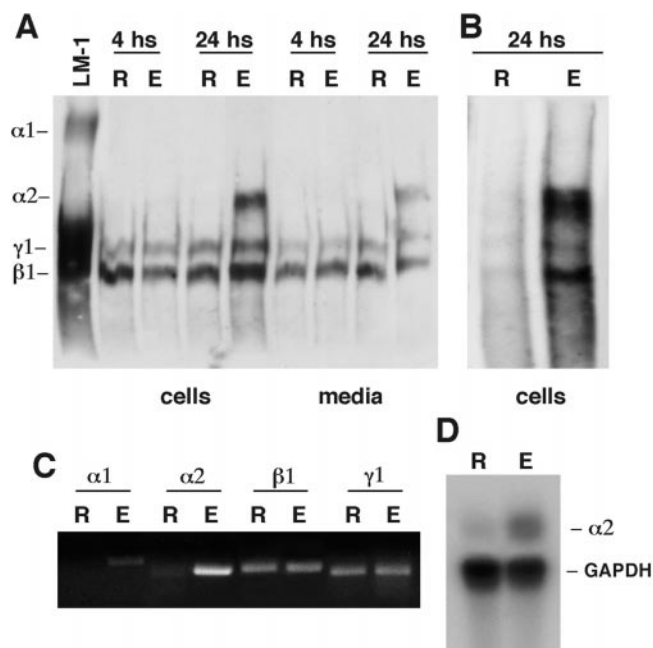


Figure 1. LM $\alpha 2$ chain expression in round versus elongated lung mesenchymal cells. (A) Western blot using a polyclonal antibody to LM-1/LM-2 on cells cultured for 4 and 24 h on 10- (R, round) or 20- μm microspheres (E, elongated). Note the presence of LM $\alpha 2$ band in elongated cells (E) after 24 h of culture. LM $\alpha 2$ also appears in the culture media after 24 h of culture. The first lane is LM-1 from the EHS tumor, used as control. (B) Cell lysates from round (R) and elongated (E) mesenchymal cells were immunoprecipitated with a monoclonal antibody against LM $\alpha 2$ chain and blotted with a polyclonal antibody to LM-1/LM-2. The immunoblot shows that the elongated cells but not the round cells synthesize trimeric LM-2. (C) RT-PCR showing higher levels of LM $\alpha 2$ chain mRNA in elongated (E), compared with round cells (R) (30 PCR cycles for $\alpha 1$ and $\beta 1$ chains, 25 cycles for $\beta 1$ and $\gamma 1$ chains). (D) RPA confirming the higher level of LM $\alpha 2$ chain mRNA in elongated (E) cells.

the anti-LM-1/LM-2 antibody mentioned above. The lack of LM-2 in the round cell immunoprecipitates confirmed that only elongated cells synthesize LM $\alpha 2$ (Fig. 1 B).

RT-PCR and RPAs demonstrated that the increment in LM $\alpha 2$ chain is, at least in part, the result of an increment in its steady-state mRNA levels (Fig. 1 C). RT-PCR demonstrated no changes in mRNA levels for LM $\alpha 1$, $\beta 1$, and $\gamma 1$ chains between round and elongated cells as well as no changes in LM $\alpha 4$ and $\alpha 5$ message levels (not shown). As expected, LM $\alpha 1$ polypeptide chain was not detected under any of these culture conditions. Our previous studies showed that LM $\alpha 1$ chain synthesis requires epithelial-mesenchymal cell-cell contact (Schuger et al., 1997). No differences were seen in cell spreading and LM $\alpha 2$ chain synthesis between cells plated on uncoated dishes or dishes coated with LM-1, LM-2, collagen IV, and fibronectin (not shown).

Immunohistochemical studies confirmed the absence of LM $\alpha 2$ chain in round mesenchymal cells and its presence in elongated cells (Fig. 2, A-C). In organotypic cultures epithelial cells rearrange into spheres and mesenchy-

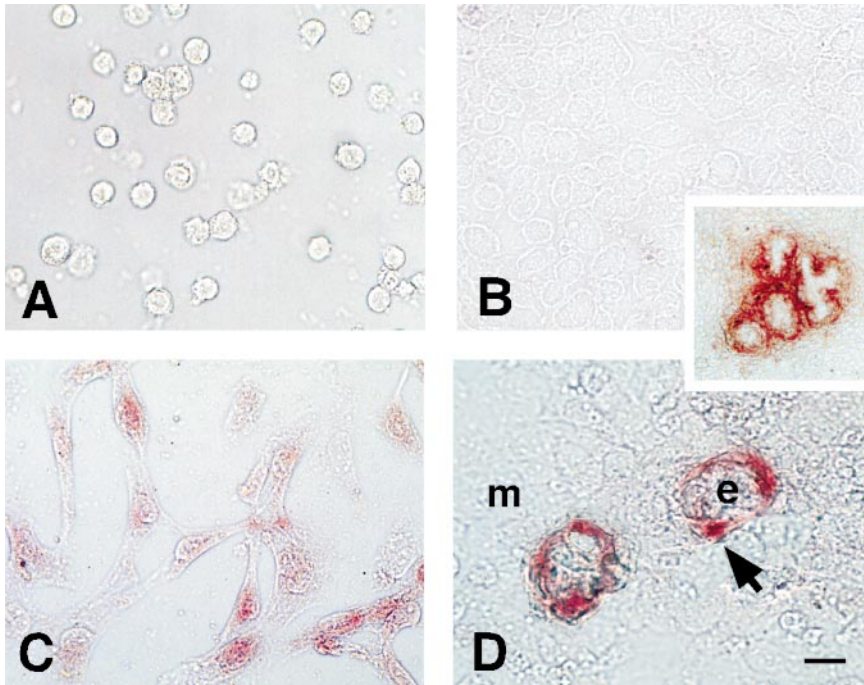


Figure 2. Immunohistochemical detection of LM $\alpha 2$ chain in round and elongated cells in monocultures and in organotypic epithelial-mesenchymal cocultures. (A) mouse mesenchymal cells cultured for 24 h in 0.05% poly-L-lysine coated dishes remain round and negative for LM $\alpha 2$ chain. (B) Mesenchymal cells plated at high cell density remain negative for LM $\alpha 2$ chain after 24 h in culture. (C) Mesenchymal cells allowed to spread for 24 h synthesize LM $\alpha 2$ chain (red). (D) Epithelial-mesenchymal organotypic cocultures. Mesenchymal cells spread around epithelial cell spheres (e) and express LM $\alpha 2$ (arrow). The rest of the mesenchymal cells (m) form a monolayer of round cells and remain negative for LM $\alpha 2$. (Inset) Organotypic cultures after three days have well developed epithelial cysts with central lumens. More mesenchymal cells spread around the cysts and become positive for LM $\alpha 2$ chain. Bars: (A–D) 15 μm ; (inset) 60 μm .

mal cells surround them forming also a surface-anchored monolayer (Schuger et al., 1993). A basement membrane is the novo assembled at the epithelial-mesenchymal interface (Schuger et al., 1998). The mesenchymal cells apposed to this new basement membrane elongate and become SM cells, while the rest remain round and undifferentiated (Yang et al., 1998). The elongated cells synthesized LM $\alpha 2$, whereas the rest remained negative (Fig. 2 D). Over time the mesenchymal cells formed cysts with central lumens and additional mesenchymal cells spread/elongated around them and synthesized LM $\alpha 2$ chain (Fig. 2, inset).

In vivo undifferentiated (round) mesenchymal cells do not express LM $\alpha 2$ chain, but elongated cells do. Here we determined whether the observations made in tissue cultures were relevant to the lung in vivo. At day 10.5 of gestation all the cells in the lung are round in shape. At this

stage, the embryonic lung synthesizes LM $\alpha 1$ but not LM $\alpha 2$ (Fig. 3, first lane). At day 12 of gestation, most of the proximal peribronchial mesenchymal cells become spread/elongated and the distal epithelial cells become spread/flat. The undifferentiated mesenchymal cells, however, are still round. Western blots of microdissected airways and surrounding mesenchyme showed that the elongated cells express both LM $\alpha 1$ and $\alpha 2$ chains (Fig. 3, second lane), whereas Western blots of microdissected undifferentiated mesenchyme showed absence of LM $\alpha 2$ chains in round cells (Fig. 3, third lane).

LM $\alpha 2$ chain expression is turned on and off by changes in cell shape. Switching cells from culture conditions that promote cell rounding to culture conditions that promote cell elongation and vice versa demonstrated that synthesis of LM $\alpha 2$ chain can be switched on and off by changes in cell shape (Fig. 4). Replating efficiency was similar for

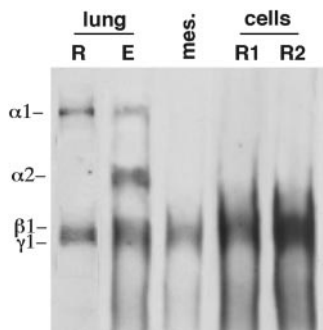


Figure 3. LM $\alpha 2$ chain in round and elongated cells of the embryonic lung. Western blot using a polyclonal antibody to LM-1/LM-2. Lane 1 (lung R), day 10.5 lungs, containing only round cells. Lane 2 (lung E), airways and surrounding mesenchyme microdissected from day 12 lungs, containing mainly elongated cells. mes. (lane 3), peripheral mesenchyme isolated from E12 lungs, containing only round cells (R). Lane 4 (R1), round undifferentiated mesenchymal cells before culture. Lane 5 (R2), round mesenchymal cells plated at high density to prevent cell spreading. LM $\alpha 2$ chain is seen only in elongated cells (lane 2).

stage, the embryonic lung synthesizes LM $\alpha 1$ but not LM $\alpha 2$ (Fig. 3, first lane). At day 12 of gestation, most of the proximal peribronchial mesenchymal cells become spread/elongated and the distal epithelial cells become spread/flat. The undifferentiated mesenchymal cells, however, are still round. Western blots of microdissected airways and surrounding mesenchyme showed that the elongated cells express both LM $\alpha 1$ and $\alpha 2$ chains (Fig. 3, second lane), whereas Western blots of microdissected undifferentiated mesenchyme showed absence of LM $\alpha 2$ chains in round cells (Fig. 3, third lane).

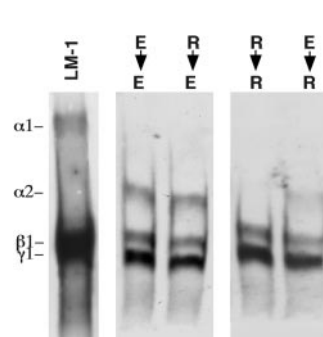


Figure 4. Switching cells from culture conditions promoting rounding or elongation. Mesenchymal cells cultured on poly-L-lysine (R) or with poly-L-lysine added to the culture medium after cell spreading is completed (E). After 24 h the cells were replated and cultured for an additional 24 h under similar or opposite conditions. Then immunoblotting was performed using a polyclonal antibody to LM-1/LM-2. LM $\alpha 2$ band appears in elongated cells (second and third lane) and is absent in the round cells (fourth and fifth lane). The first lane is LM-1 from EHS tumor, used as control.

LM $\alpha 2$ chain expression is turned on and off by changes in cell shape. Switching cells from culture conditions that promote cell rounding to culture conditions that promote cell elongation and vice versa demonstrated that synthesis of LM $\alpha 2$ chain can be switched on and off by changes in cell shape (Fig. 4). Replating efficiency was similar for

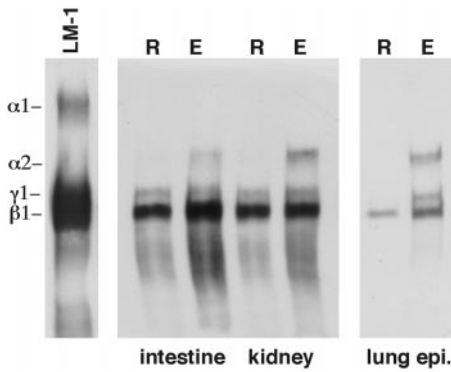


Figure 5. LM $\alpha 2$ chain expression in mesenchymal cells from other organs and in lung epithelial cells. Western blot using a polyclonal antibody to LM-1/LM-2 on mesenchymal cells from day 15 intestine and day 12 kidney, and epithelial cells from day 15 lungs cultured on poly-L-lysine (R) or with poly-L-lysine added to the culture medium after cell spreading is completed (E). Note the presence of LM $\alpha 2$ band in elongated cells (E) from all three sources. The other lanes show $\beta 1$ and $\gamma 1$ bands only. The first lane is LM-1 from the EHS tumor, used as control.

round and elongated cells (48 ± 12 and $50 \pm 10\%$ of replated cells attached, respectively).

The control of LM $\alpha 2$ chain expression by the cell shape is not restricted to lung embryonic mesenchymal cells. During lung development, both epithelial and mesenchymal cells undergo changes in shape. The most dramatic changes take place on distal epithelial cells that become totally flat and spread by day 14–15 of gestation. Here we determined the role of cell shape on lung embryonic epithelial cells as well as on embryonic mesenchymal cells from kidney and intestine. Immunoblots showed that cell shape also regulates LM $\alpha 2$ chain expression in these cells in a similar manner as observed in mesenchymal cells. Like in embryonic mesenchymal cells, rounding prevented and spreading induced LM $\alpha 2$ chain synthesis (Fig. 5).

Cell spreading is blocked by monoclonal antibodies to LM $\alpha 2$ chain. Effect on SM differentiation. In functional studies, 1 and 2 $\mu\text{g/ml}$ of monoclonal antibody against LM

$\alpha 2$ chain were sufficient to block mesenchymal cell spreading in a statistically significant manner (Fig. 6, A–C). Higher concentrations of antibody did not further reduce spreading. Therefore, these studies indicated a reciprocal interaction between cell shape and LM $\alpha 2$ by showing that not only is the LM $\alpha 2$ chain induced by cell spreading, but also that cell spreading is induced by the LM $\alpha 2$ chain. Mesenchymal cells exposed to the anti-LM $\alpha 2$ chain antibodies showed a decrease in synthesis of SM-specific proteins, including SM α -actin, desmin and myosin when compared with cells exposed to control immunoglobulin (Fig. 6 D, and data not shown). Attachment assays in the presence of anti-LM $\alpha 2$ chain antibody or IgG control showed that the antibody also inhibited cell adhesion (64% less cells attached in the presence of 20 $\mu\text{g/ml}$ of anti-LM $\alpha 2$ chain antibodies than in the presence of same concentration of control IgG; not shown).

SM cells from adult *dy/dy* mouse lung spread poorly in culture and contain less SM-specific protein. Over 40% of the attached mesenchymal cells, whether isolated from normal or mutant mice, reacted with anti-desmin antibodies (not shown). All mesenchymal cell cultures isolated from adult *dy/dy* mouse lungs showed poor cell spreading and lower levels of SM-specific protein than controls. The deficiencies in cell spreading and SM protein synthesis disappeared by plating the cells on LM-2 (Fig. 7). LM-1 or fibronectin coating did not improve the abnormalities in cell spreading and SM protein synthesis seen in *dy/dy* mouse cells (Fig. 7 and data not shown).

Dy/dy mice have SM abnormalities in vivo, including shorter cells and deficiencies in SM-specific protein production. Cell morphometry studies showed that bronchial SM cells in *dy/dy* mice were shorter than in control animals in a statistically significant manner (Fig. 8 A). No differences in size were found, however, in lung vascular SM cells or bronchial columnar epithelial cells (not shown). Immunoblots demonstrated that adult *dy/dy* mouse lungs contained less SM-specific proteins, including SM α -actin, desmin, and myosin (Fig. 8 B). On histological examination, the most abnormal SM was that of the trachea and main bronchi. In those sites, the visceral SM cells were shorter and underdeveloped (Fig. 9, B and D). For com-

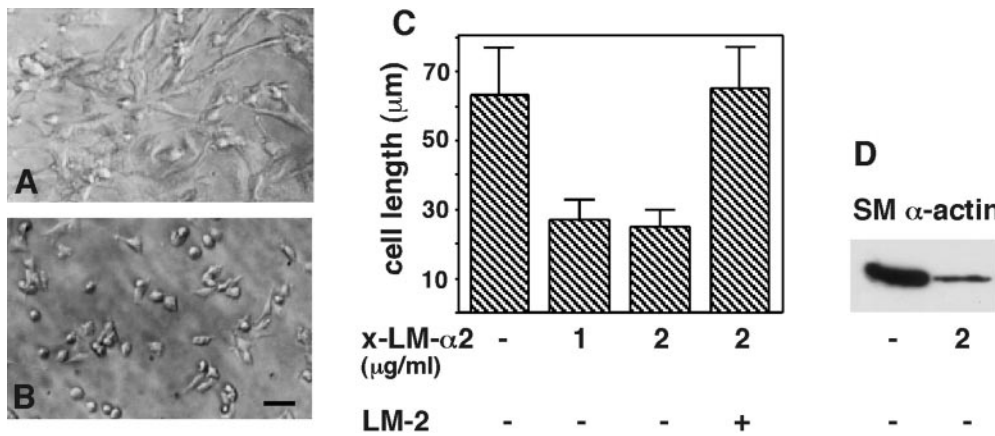


Figure 6. Cell spreading perturbation assays using antibodies to LM $\alpha 2$ chain. Lung mesenchymal cells were cultured in the presence of 1 and 2 $\mu\text{g/ml}$ of LM $\alpha 2$ antibody, IgG control, or 2 $\mu\text{g/ml}$ of LM $\alpha 2$ antibody preincubated with LM-2. Cell spreading was measured after 24 h in culture. (A) Cells in the presence of 2 $\mu\text{g/ml}$ IgG. (B) Cells in the presence of 2 $\mu\text{g/ml}$ LM $\alpha 2$ antibody. (C) Histogram obtained by measuring the maximal cell diameters under the various treatments. (D) Immunoblot showing less SM α actin in cells exposed to the anti-LM $\alpha 2$ chain antibody. Bar, 40 μm .

ments. The inhibition in cell spreading was statistically significant, $P < 0.0001$ for 2 $\mu\text{g/ml}$ LM $\alpha 2$ antibody. Bar, 40 μm .

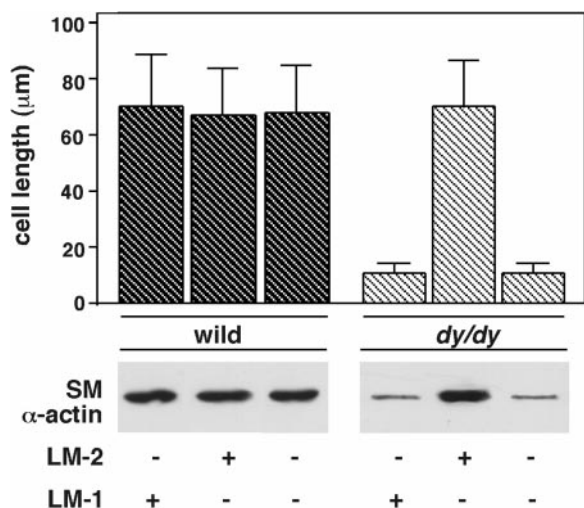


Figure 7. SM α actin production by lung mesenchymal cells isolated from adult *dy/dy* mice and controls. Cell spreading and SM α actin production were determined after 24 h in culture. The histogram shows the maximal cell diameters of wild-type and *dy/dy* mouse cells cultured on LM-1, LM-2, or uncoated dishes. The immunoblot shows SM α actin production by the cells. Notice the short diameter and low level of SM α actin in *dy/dy* mouse cells when cultured on LM-1 or uncoated dishes but not when cultured on LM-2.

parison, A and C show tracheal and bronchial SM in normal animals of the same strain. Unlike the extraparenchymal airway, the changes in the intraparenchymal bronchial SM were subtle and detected mainly by cell morphometry (shorter cells) and immunoblotting as already shown in Fig. 8. On immunohistochemistry using an anti-SM α -actin antibody, the large and medium sized bronchial muscle exhibited slightly, but clear thinning and more discontinuity than the normal counterparts (Fig. 9, E and F).

The SMs of stomach and intestine were also studied. Histological examination and morphometric studies of the stomach revealed no alterations in *dy/dy* mice when compared with controls. The intestine, however, exhibited

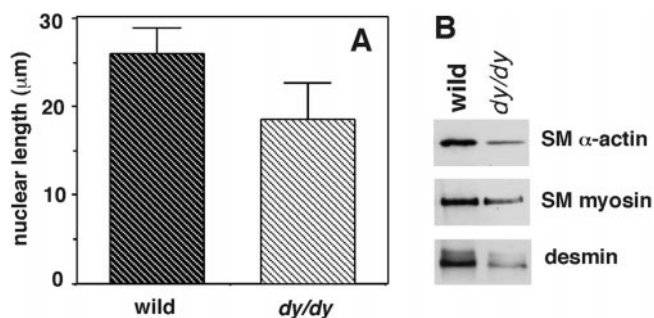


Figure 8. SM cell size in intraparenchymal bronchi of *dy/dy* mice and controls. (A) Histogram showing maximal nuclear diameter as an indicator of cell size in hematoxylin eosin-stained histological sections of lungs (cell boundaries are not seen in organs). *Dy/dy* mice showed shorter nuclei compared with controls ($P < 0.05$). (B) Immunoblots demonstrating lower levels of SM proteins in *dy/dy* lungs compared with controls.

shorter SM cells, similar to what was seen in the lung (Fig. 10 A). Unlike the trachea and bronchi, the SM cells in the intestinal wall were arranged in more layers (hyperplasia) resulting in a thicker muscularis wall. In the thinnest areas, the muscular circular layer was 2 ± 1 -SM cell-thick in *dy/dy* mouse intestine and 1 ± 1 -SM cell-thick in control animals. In the thickest sites, the circular layer was 15 ± 3 -cell-thick in *dy/dy* intestine and 12 ± 2 -cell-thick in controls. Reflecting this hyperplasia, immunoblotting showed a slight increase in SM-specific proteins in the intestine of *dy/dy* mice compared with controls (Fig. 10 B).

Discussion

Reciprocal Interactions between LM $\alpha 2$ Chain and Embryonic Mesenchymal Cell Shape

During development, embryonic cells undergo significant changes in shape. In the early stages of embryogenesis, essentially all cells are round, but along with differentiation part of them become spindly whereas others adopt a columnar, cuboidal, or flat configuration. Our studies (Yang et al., 1998, 1999) and those of others (Leptin, 1995; Loty et al., 1995; Anastasi et al., 1997; Fernandez-Valle et al., 1997; Martin-Blanco, 1997, 1998; Bidwell et al., 1998) indicate that these changes in shape can be part of a mechanistic cascade directing precursor cells to specific differentiation lineages. Among the multiple factors controlling cell shape, we originally identified LM-1 as relevant for bronchial myogenesis (Schuger et al., 1997; Yang et al., 1998). We observed that during lung development, LM $\alpha 1$ chain synthesis is induced by epithelial-mesenchymal contact. LM $\alpha 1$ is deposited at the airway epithelial-mesenchymal interface, where it stimulates peribronchial mesenchymal cells to spread and to synthesize SM-specific proteins (Schuger et al., 1997).

Here we show that this change in cell shape from round to elongated results in the concomitant induction of LM $\alpha 2$ chain expression. In these studies we used different culture approaches to modulate cell shape and to determine its impact on LM $\alpha 1$, $\alpha 2$, $\beta 1$, and $\gamma 1$ chain expression. To confirm our in vitro findings, we analyzed tissue fragments microdissected from developing lungs containing either round cells or mostly elongated cells. Our studies demonstrated that, while LM $\beta 1$ and $\gamma 1$ chains are equally synthesized by round and elongated cells, LM $\alpha 2$ expression is under the control of cell shape in such a manner that round cells do not synthesize LM $\alpha 2$ chain, either in vivo or in vitro, but its expression is turned on by cell spreading/elongation. Furthermore, the induction of LM $\alpha 2$ chain is a reversible process that can be switched on and off in culture by cyclic changes in cell shape.

It has been shown that limiting the degree of cell spreading in culture may decrease protein secretion (Singhvi et al., 1994). In our study, however, LM $\alpha 2$ chain expression was not suppressed due to nonspecific inhibition in protein synthesis, as indicated by the fact that round and elongated cells synthesized the same amounts of LM $\beta 1/\gamma 1$ chains. Furthermore, we recently showed that round and elongated cells cultured on microsurfaces have similar metabolic rates, and round cells even synthesize higher levels of α -fetoprotein than their spread/elongated coun-

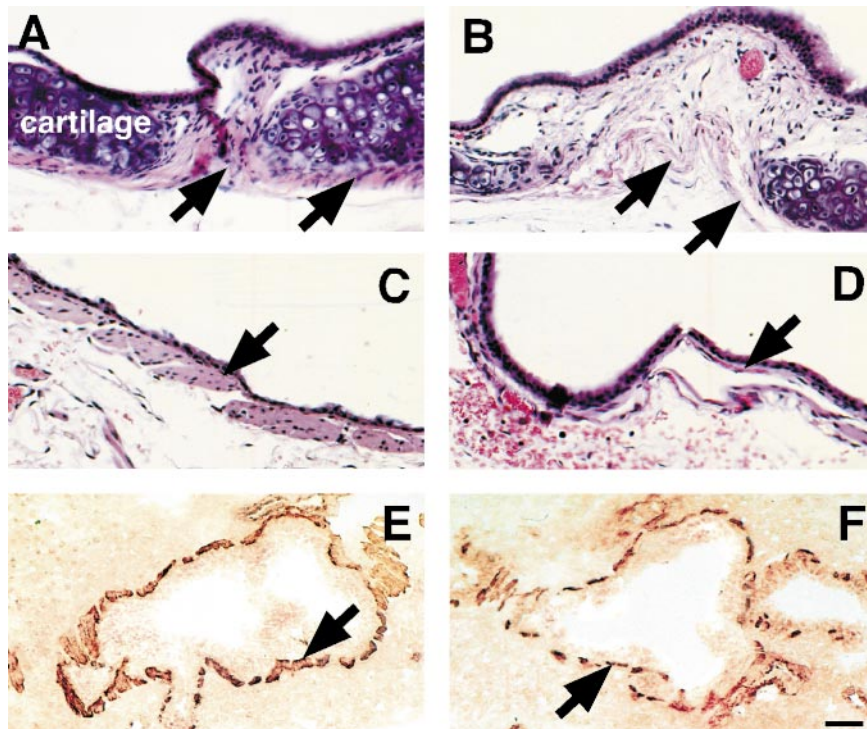


Figure 9. SM in trachea and bronchi of *dy/dy* mice and controls. (A–D) Hematoxylin eosin-stained histological sections of trachea and main bronchi. (A) Normal tracheal SM (arrows) surrounding tracheal cartilage; compare to the severely underdeveloped tracheal SM in *dy/dy* mouse, shown in B (arrows). (C) SM in normal main bronchus (arrow) is significantly thicker than in *dy/dy* mouse (D). (E and F) Intraparenchymal bronchial SM immunostained with antibodies to SM α actin (brown). (E) Normal SM (arrow) surrounding medium sized bronchi; compare to thinner, more discontinuous bronchial muscle in *dy/dy* mice, shown in F (arrow). Bars: (A–D) 20 μ m; (E and F) 60 μ m.

terparts (Yang et al., 1999). Finally, LM α 2 chain was not found in undifferentiated mesenchyme freshly isolated from the lungs, confirming its absence in round cells in vivo.

As previously stressed, among the several LM chains analyzed, the effect of cell shape on message and protein levels was specific to LM α 2. Message RNA for LM α 1, α 4, α 5, β 1, and γ 1 chains was not significantly altered by cyclic changes in cell shape, neither were LM β 1 and γ 1 polypeptide chain levels. In regard to LM α 1 chain, its synthesis requires epithelial-mesenchymal cell contact (Schuger et al.,

1997) and as expected it was not detected in fragments of mesenchyme alone or mesenchymal cell cultures. However, its presence in the early embryonic lung, where essentially all cells are round, and the lack of significant oscillations at the mRNA level (Fig. 1 B), indicated that LM α 1 chain synthesis does not cycle with changes in cell shape.

Functional studies in which embryonic mesenchymal cell spreading/elongation was blocked by a monoclonal antibody against LM α 2 chain demonstrated that, once secreted, LM α 2 chain becomes a powerful stimulus for cell spreading. The antibody used in our functional studies reacts with the NH₂-terminal of LM α 2 chain, a region that has been shown to be involved in heparin binding, LM-2 polymerization (Cheng et al., 1997) and cell binding through integrins α 1 β 1 and α 2 β 1 (Collognato and Yurchenco, 1997). The functional role of the NH₂ terminus is also underscored by an animal model of congenital muscular dystrophy, the *dy^{2J}/dy^{2J}* mouse. This mutant animal has a truncated LM α 2 chain which lacks only 57 amino acids at its NH₂-terminal domain (Xu et al., 1994a; Sunada et al., 1995), and nevertheless this deletion is enough to cause muscular dystrophy. Integrins α 1 β 1 and α 2 β 1 are expressed by developing bronchial SM (Virtanen et al., 1996; Wu and Santoro, 1996) and therefore may participate in LM α 2 chain-mediated mesenchymal cell spreading. Supporting such a possibility, deletion of integrin α 1 by homologous recombination permits normal murine development but gives rise to specific deficit in mesenchymal cell adhesion and spreading (Gardner et al., 1996). In addition, knockout of integrin β 1 chain, which cause early embryonic death (Fassler and Meyer, 1995), results in retardation of myogenic differentiation of embryonic stem cells in culture (Rohwedel et al., 1998).

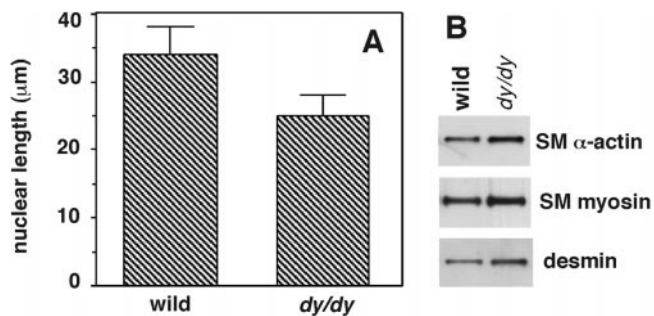


Figure 10. SM cell size in circular layer of intestinal muscularis propria of *dy/dy* mice and controls. (A) Histogram showing maximal nuclear diameter as an indicator of cell size in hematoxylin eosin-stained histological sections (cell boundaries are not seen in organs). *Dy/dy* mice showed shorter nuclei compared with controls ($P < 0.03$). (B) Immunoblots demonstrating slightly higher levels of SM proteins in *dy/dy* intestine compared with controls, consistent with the hyperplasia described in Results.

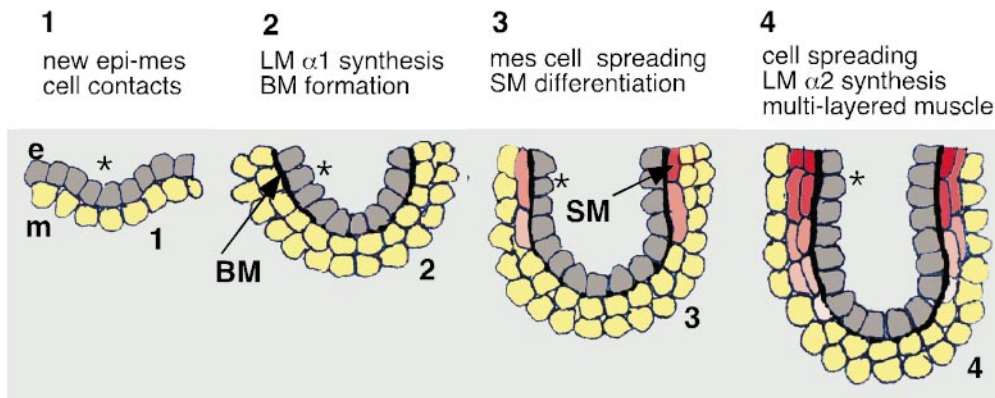


Figure 11. Proposed role of LM-1 and LM-2 in bronchial myogenesis. e, Epithelial cells (gray); m, mesenchymal cells (yellow); SM, smooth muscle cells (from pink to red); BM, basement membrane. The asterisk tags the relative position adopted by an epithelial cell from the moment it is born and establishes a new contact with the mesenchyme.

Role of LM α 2 Chain in Bronchial Myogenesis

We recently observed that most embryonic mesenchymal cells are potential SM precursors and if allowed to spread/elongate, they will differentiate into SM cells (Yang et al., 1998, 1999). Our functional studies demonstrated that LM α 2 chain deposition in the extracellular matrix is per se a stimulus for cell spreading. This led us to determine the effect of inhibiting LM α 2 chain-mediated cell spreading on SM differentiation. Mesenchymal cells exposed to the anti-LM α 2 chain antibodies showed a decrease in synthesis of SM-specific proteins when compared with controls. Therefore, a feedback interaction seems to exist between the cells' shape, the levels of LM α 2 chain and SM myogenesis.

The molecular pathways linking LM α 2 chain, cell shape, and SM myogenesis are currently unknown. One possibility is that by promoting cell spreading/elongation, LM α 2 chain stimulates specific cell receptors known to function as mechanotransducers, such as integrins (Wang et al., 1993). These then could activate gene expression by a signaling mechanism similar to that exerted by the breast extracellular matrix upon the mammary gland epithelium (Lelievre et al., 1996). An important player in cell shape signaling is the Rho family of G proteins (Bussey, 1996). Interestingly, searching a subtracted cDNA library of undifferentiated, round mesenchymal cells, we found RhoA to be highly expressed in round mesenchymal cells with minimal expression in elongated cells (Liu, J., and L. Schuger, unpublished studies). It should be stressed, however, that cell shape controls gene expression through multiple mechanisms including signaling pathways not necessarily involving Rho (Martin-Blanco, 1997, 1998), changing the cytoskeleton and nuclear matrix architecture (Loty et al., 1995; Fernandez-Valle et al., 1997; Shannon et al., 1998; Bidwell et al., 1998), inducing synthesis of auto/paracrine factors (Vijayakumar et al., 1999), etc. Therefore, multiple mechanisms may be involved in the process of LM α 2 chain-induced SM myogenesis.

Visceral SM Abnormalities in *dy/dy* Mice

Dy/dy mice express lower levels of LM α 2 chain, due to a spontaneous genetic mutation (Sunada et al., 1994; Xu et al., 1994a, 1994b). Therefore, we studied SM cells isolated from *dy/dy* lungs to determine how these cells behave in culture. These mutant mice have been used for many years

as a model of skeletal muscular dystrophy, and although there are no previous reports describing SM defects in *dy/dy* mice, we predicted, based on our findings, that these animals should have abnormal SM cells. Indeed, we found that lung SM cells isolated from *dy/dy* mice spread defectively in culture and synthesize less SM proteins than controls. These deficiencies were overcome by the addition of exogenous LM-2 but not LM-1 or fibronectin.

On histological examination of lung sections, bronchial SM cells in *dy/dy* mice were shorter than in control animals and their lungs contained less SM-specific proteins. The morphological abnormalities diminished in severity from trachea, where the muscle was also underdeveloped, to the distal bronchi. Although the SM changes in the intraparenchymal bronchi were subtle, our current studies seem to indicate that these are sufficient to affect the electrical and contractile properties of *dy/dy* SM cells in culture (Yang, Y., and L. Schuger, ongoing studies). The SM cells of stomach and intestine were also examined. While no abnormalities were detected in the former, the intestine exhibited shorter SM cells, as seen in the bronchi. However, unlike the airways, the intestinal wall showed more SM cell layers, indicative of compensatory hyperplasia. The latter resulted in a net increase of SM-specific proteins in immunoblots.

It is unclear why some SMs were hyperplastic and others not. One reason could be related to the mechanical challenge sustained by the muscle. Muscles with peristalsis, such as the intestine, are rhythmically stimulated to contract. Since SM cells are able to proliferate, the *dy/dy* intestinal muscle may overcome the functional deficit caused by low LM α 2 chain with an increment in cell number, thus, becoming hyperplastic. In contrast, muscles with minimal mechanical activity, such as the trachea and main bronchi, experience no mechanical challenge and therefore have no need to compensate. Between these two extremes, SMs with moderate contractile activity, such as the intraparenchymal bronchi, may require only intermediate grades of compensation. The gastric and vascular musculature may also fall under this category.

The Reciprocal Interaction between LM α 2 Chain and Cell Shape May Play a Role in the Differentiation of Other Tissues

The effect of cell shape on LM α 2 chain expression was

not restricted to lung mesenchymal cells, but it was seen in other cells as well. Therefore, our findings suggested that cell shape-controlled LM $\alpha 2$ chain expression may play a broader role in development. In this regard, Virtanen et al. (1996) found that during the preglandular stage of human lung development, LM $\alpha 2$ chain is deposited in the distal airway basement membranes, where epithelial cells are undergoing a change in shape from round/cuboidal to flat/spread (Burry, 1997). Similarly, Lefebvre et al. (1999) showed that during intestinal development, LM $\alpha 2$ chain is synthesized by elongating mesenchymal cells, but not by epithelial cells that are round/cuboidal in shape. Although neither of these papers intended to draw correlations between the cell shape and LM $\alpha 2$ chain expression, both support the possibility that epithelial cell shape and LM $\alpha 2$ chain may be functionally connected in vivo.

Proposed Roles for LM $\alpha 1$ and $\alpha 2$ in Bronchial Myogenesis

Fig. 11 depicts the proposed roles of LM $\alpha 1$ and $\alpha 2$ chains in bronchial myogenesis. Our studies suggest that the development of new epithelial-mesenchymal contacts during lung organogenesis results in the induction of LM $\alpha 1$ chain expression and deposition of LM-1 at the epithelial/mesenchymal interface (Schuger et al., 1997). LM-1 molecules polymerize, contributing to the formation of a basement membrane (Schuger et al., 1995, 1998). The mesenchymal cells apposed to the newly formed basement membrane utilize this meshwork to spread/elongate through binding to LM $\alpha 1$ (Schuger et al., 1997). This change in cell shape induces them to synthesize LM $\alpha 2$ chain and concomitantly to differentiate into SM. Once secreted as part of LM-2, LM $\alpha 2$ chain stimulates spreading and SM differentiation of nearby mesenchymal cells, eventually leading to the establishment of a multilayered visceral muscle. The process of myogenesis could stop when LM $\alpha 2$ chain expression drops dramatically at the end of the pseudo glandular period (Virtanen et al., 1996) whereby preventing excessive SM formation.

This work has been supported by NHLBI grant HL-48730 (L. Schuger) and George M. O'Brien Research Center Grant P50 DK45181 (J.M. Miner).

Submitted: 9 August 1999

Revised: 4 November 1999

Accepted: 8 November 1999

References

Anastasi, S., S. Giordano, O. Sthandier, G. Gambarotta, R. Maione, P. Comoglio, and P. Amati. 1997. A natural hepatocyte growth factor/scatter factor autocrine loop in myoblast cells and the effect of the constitutive Met kinase activation on myogenic differentiation. *J. Cell Biol.* 137:1057–1068.

Bernier, S.M., A. Utani, S. Sugiyama, T. Doi, C. Polistina, and Y. Yamada. 1995. Cloning and expression of laminin $\alpha 2$ chain (m-chain) in the mouse. *Matrix Biol.* 14:447–455.

Bidwell, J.P., M. Alvarex, H. Feister, J. Onyia, and J. Hock. 1998. Nuclear matrix proteins and osteoblast gene expression. *J. Bone Miner. Res.* 2:155–167.

Burgeson, R.E., M. Chiquet, R. Deutzmann, P. Ekblom, J. Engel, H. Kleinman, G.R. Martin, M. Meneguzzi, and J. Sanes. 1994. A new nomenclature for the laminins. *Matrix Biol.* 263:16536–16544.

Burry, P.H. 1997. Structural aspects of prenatal and postnatal development and growth of the lung. *In Lung Growth and Development*. J.A. McDonald, editor. Marcel Dekker, Inc., N.Y. 1–36.

Bussey, H. 1996. Cell shape determination: a pivotal role for Rho. *Science*. 272: 224–225.

Cheng, Y.-S., M.-F. Champlaud, R.E. Burgeson, M.P. Marinkovich, and P.D.

Yurchenco. 1997. Self-assembly of laminin isoforms. *J. Biol. Chem.* 272: 3125–3132.

Colognato, H., and P.D. Yurchenco. 1997. The laminin $\alpha 2$ -chain short arm mediates cell adhesion through both the $\alpha 1\beta 1$ and $\alpha 2\beta 1$ integrins. *J. Biol. Chem.* 272:29330–29336.

Fassler, R., and M. Meyer. 1995. Consequences of lack of $\beta 1$ integrin gene expression in mice. *Genes Dev.* 9:1896–1908.

Fernandez-Valle, C., D. Gorman, A.M. Gomez, and M.B. Bunge. 1997. Actin plays a role in both changes in cell shape and gene-expression associated with Schwann cell myelination. *J. Neurosci.* 17:241–250.

Flores-Delgado, G., P. Bringas, and D. Warburton. 1998. Laminin 2 attachment selects myofibroblasts from fetal mouse lung. *Am. J. Physiol.* 19:L622–L630.

Gardner, H., J. Kreidberg, V. Koteliangsky, and R. Jaenisch. 1996. Deletion of integrin $\alpha 1$ by homologous recombination permits normal murine development but gives rise to a specific deficit in cell adhesion. *Dev. Biol.* 175:301–313.

Hillaire, D., A. Leclerc, S. Faure, H. Topaloglu, N. Chiannikulchai, P. Guicheney, L. Grinas, P. Legos, J. Philpot, T. Evangelista, et al. 1994. Localization of merosin-negative congenital muscular dystrophy to chromosome 6q2 by homozygosity mapping. *Hum. Mol. Genet.* 3:1657–1661.

Lefebvre, O., L. Sorokin, M. Keding, and P. Simon-Assmann. 1999. Developmental expression and cellular origin of the laminin $\alpha 2$, $\alpha 4$, and $\alpha 5$ chains in the intestine. *Dev. Biol.* 210:135–150.

Leivo, I., and E. Engvall. 1988. Merosin, a protein specific for basement membrane of Schwann cells, striated muscle and trophoblast, is expressed late in nerve and muscle development. *Proc. Natl. Acad. Sci. USA.* 85:1544–1548.

Lelievre, S., V.M. Weaver, and M.J. Bissell. 1996. Extracellular matrix signaling from the cellular membrane skeleton to the nuclear skeleton: a model of gene regulation. *Recent Prog. Horm. Res.* 51:417–432.

Leptin, M. 1995. *Drosophila* gastrulation: from pattern formation to morphogenesis. *Annu. Rev. Cell Dev. Biol.* 11:189–212.

Loty, S., N. Forest, H. Boulekbache, and J.M. Sautier. 1995. Cytochalasin D induces changes in cell shape and promotes in vitro chondrogenesis: a morphological study. *Biol. Cell.* 83:149–161.

Martin-Blanco, E. 1997. Regulation of cell differentiation by the *Drosophila* Jun kinase cascade. *Curr. Opin. Genet. Dev.* 5:666–671.

Martin-Blanco, E. 1998. Regulatory control of signal transduction during morphogenesis in *Drosophila*. *Int. J. Dev. Biol.* 42:363–368.

Miner, J.H., B.L. Patton, S.I. Lentz, D.J. Gilbert, W.D. Snider, N.A. Jenkins, N.G. Copland, and J.R. Sanes. 1997. The laminin α chains: expression, developmental transitions, and chromosomal locations of $\alpha 1$ -5, identification of heterotrimeric laminins 8-11, and cloning of a novel $\alpha 3$ isoform. *J. Cell Biol.* 137:685–701.

Miyagoe, Y., K. Hanaoka, I. Nonaka, M. Hayasaka, Y. Nabeshima, K. Arahata, Y. Nabeshima, and S. Takeda. 1997. Laminin $\alpha 2$ chain-null mutant mice by targeted disruption of the Lama2 gene: a new model of merosin (laminin 2)-deficient congenital muscular dystrophy. *FEBS Lett.* 415:33–39.

Patton, B.L., J.H. Miner, A.Y. Chiu, and J.R. Sanes. 1997. Distribution and function of laminins in the neuromuscular system of developing, adult, and mutant mice. *J. Cell Biol.* 139:1507–1521.

Rohwedel, J., K. Guan, W. Zuschratter, S. Jin, G. Ahnert-Hilger, D. Furst, R. Fassler, and A.M. Wobus. 1998. Loss of $\beta 1$ integrin function results in a retardation of embryonic stem cells in vitro. *Dev. Biol.* 201:167–184.

Schuler, F. and Sorokin, L.M. 1995. Expression of laminin isoforms in mouse myogenic cells in vitro and in vivo. *J. Cell Sci.* 108:3795–3805.

Schuger, L., J. Varani, J. Mitra, and K. Gilbride. 1993. Retinoic acid stimulates mouse lung development by a mechanism involving epithelial-mesenchymal interaction and regulation of epidermal growth factor receptors. *Dev. Biol.* 159:462–473.

Schuger, L., A.P.N. Skubitz, A. Morenas, and K. Gilbride. 1995. Different laminin domains facilitate lung development by independent mechanisms of action. *Dev. Biol.* 169:520–532.

Schuger, L., P.D. Yurchenco, N. Relan, and Y. Yang. 1998. Laminin fragment E4 inhibition studies: basement membrane assembly and embryonic lung epithelial cell polarization requires laminin polymerization. *Int. J. Dev. Biol.* 41:217–220.

Schuger, L., A.P.N. Skubitz, J. Zhang, L. Sorokin, and L. He. 1997. Laminin $\alpha 1$ chain synthesis in mouse developing lung: requirement of epithelial mesenchymal contact and possible role in bronchial smooth muscle development. *J. Cell Biol.* 139:553–562.

Shannon, J.M., T. Pan, K.E. Edeen, and L.D. Nielsen. 1998. Influence of the cytoskeleton on surfactant protein gene expression in cultured rat alveolar type II cells. *Am. J. Physiol.* 274:L87–L96.

Singhvi, R., A. Kumar, G.P. Lopez, G.N. Stephanopoulos, D.I. Wang, G.M. Whitesides, and D.E. Ingber. 1994. Engineering cell shape and function. *Science*. 264:696–698.

Sunada, Y., S.M. Bernier, C.A. Kozak, Y. Yamada, and K.P. Campbell. 1994. Deficiency of merosin in dystrophic dy mice and genetic linkage of laminin M chain gene to dy locus. *J. Biol. Chem.* 269:13729–13732.

Sunada, Y., S.M. Bernier, A. Utani, Y. Yamada, and K.P. Campbell. 1995. Identification of a novel mutant transcript of laminin $\alpha 2$ chain gene responsible for muscular dystrophy and dysmyelination in *dy²³* mice. *Human Mol. Gen.* 4:1055–1061.

Timpl, R., M. Rhode, P. Gehron-Robey, S.T. Rennard, J.M. Foidart, and G.R. Martin. 1979. Laminin-A glycoprotein from basement membranes. *J. Biol. Chem.* 254:9933–9937.

- Vachon, P.H., F. Loechel, H. Xu, U.M. Wewer, and E. Engvall. 1996. Merosin and laminin in myogenesis; specific requirement for merosin in myotube stability and survival. *J. Cell Biol.* 134:1483–1497.
- Vijayakumar, S., J. Takito, C. Hikita, and Q. Al-Awqati. 1999. Hensin remodels the apical cytoskeleton and induces columnarization of intercalated epithelial cells: processes that resemble terminal differentiation. *J. Cell Biol.* 144:1057–1067.
- Virtanen, I., A. Laitinen, T. Taneli, P. Paakko, L.A. Laitinen, R.E. Burgeson, and V.P. Letho. 1996. Differential expression of laminins and their integrin receptors in developing and adult human lung. *Am. J. Respir. Cell Mol. Biol.* 15:184–196.
- Vuolteenaho, R., M. Nissinen, K. Sainio, M. Byers, R. Eddy, H. Hirvonen, T.B. Shows, H. Sariola, E. Engvall, and K. Tryggvason. 1994. Human laminin M chain (merosin): complete primary structure, chromosomal assignment, and expression of the M and A chain in human fetal lung. *J. Cell Biol.* 124:381–394.
- Wang, N., J.P. Butler, and D.E. Ingber. 1993. Mechanotransduction across the cell surface and through the cytoskeleton. *Science.* 260:1124–1127.
- Wu, J.E., and S.A. Santoro. 1996. Differential expression of integrin α subunits supports distinct roles during lung branching morphogenesis. *Dev. Dyn.* 206:169–181.
- Xu, H., X.R. Wu, U.M. Wewer, and E. Engvall. 1994a. Murine muscular dystrophy caused by a mutation in the laminin $\alpha 2$ (Lama2) gene. *Nat. Genet.* 8:297–302.
- Xu, H., P. Christmas, X.R. Wu, U.M. Wewer, and E. Engvall. 1994b. Defective muscle basement membrane and lack of M-laminin in the dystrophic *dy/dy* mouse. *Proc. Natl. Acad. Sci. USA.* 91:5572–5576.
- Yang, Y., K.C. Palmer, N.K. Relan, C. Diglio, and L. Schuger. 1998. Role of laminin polymerization at the epithelial mesenchymal interface in bronchial myogenesis. *Development.* 125:2621–2629.
- Yang, Y., N.K. Relan, D. Przywara, and L. Schuger. 1999. Differentiation of smooth muscle cell precursors is determined by the cell's shape. *Development.* 126:3027–3033.