

## **Fc $\gamma$ Receptor Activation Induces the Tyrosine Phosphorylation of Both Phospholipase C (PLC)- $\gamma$ 1 and PLC- $\gamma$ 2 in Natural Killer Cells**

By Adrian T. Ting,\* Larry M. Karnitz,\* Renee A. Schoon,\* Robert T. Abraham,\*<sup>†</sup> and Paul J. Leibson\*

From the Departments of \*Immunology and <sup>†</sup>Pharmacology, Mayo Clinic and Foundation, Rochester, Minnesota 55905

### **Summary**

Crosslinking of the low affinity immunoglobulin G (IgG) Fc receptor (Fc $\gamma$ R type III) on natural killer (NK) cells initiates antibody-dependent cellular cytotoxicity. During this process, Fc $\gamma$ R stimulation results in the rapid activation of phospholipase C (PLC), which hydrolyzes membrane phosphoinositides, generating inositol-1,4,5-trisphosphate and *sn*-1,2-diacylglycerol as second messengers. We have recently reported that PLC activation after Fc $\gamma$ R stimulation can be inhibited by a protein tyrosine kinase (PTK) inhibitor. Based on the paradigm provided by the receptor tyrosine kinases, we investigated whether PLC- $\gamma$ 1 and/or PLC- $\gamma$ 2 are expressed in NK cells, and whether the PLC- $\gamma$  isoforms are tyrosine phosphorylated in response to Fc $\gamma$ R stimulation. Immunoblotting analyses with PLC- $\gamma$ 1- and PLC- $\gamma$ 2-specific antisera demonstrate that both isoforms are expressed in human NK cells. Furthermore, Fc $\gamma$ R crosslinking triggers the tyrosine phosphorylation of both PLC- $\gamma$ 1 and PLC- $\gamma$ 2 in these cells. Phosphorylation of both isoforms is detectable within 1 min, and returns to basal level within 30 min. Pretreatment with herbimycin A, a PTK inhibitor, blocked the Fc $\gamma$ R-induced tyrosine phosphorylation of PLC- $\gamma$ 1 and PLC- $\gamma$ 2, and the subsequent release of inositol phosphates. These results suggest that Fc $\gamma$ R-initiated phosphoinositide turnover in human NK cells is regulated by the tyrosine phosphorylation of PLC- $\gamma$ . More broadly, these observations demonstrate that nonreceptor PTK(s) activated by crosslinkage of a multisubunit receptor can phosphorylate both PLC- $\gamma$  isoforms.

The presence of foreign antigens in an immunocompetent host elicits the generation of antigen-specific antibodies. The binding of these antibodies to antigen-bearing cells marks them for subsequent destruction by various immune effector cells, including NK cells. NK cells represent a distinct subpopulation of lymphocytes that expresses low affinity receptors for IgG (Fc $\gamma$ R type III) on their surfaces (1). The binding of Fc $\gamma$ R type III (hereafter referred to as Fc $\gamma$ R) to its ligand, the Fc portion of IgG antibodies present on the target cell's surface, initiates a cascade of intracellular biochemical signals in the NK cells that ultimately leads to the exocytosis of preformed cytolytic granules (2–4). Our group and others have characterized proximal signal transduction events initiated by Fc $\gamma$ R activation in NK cells (for reviews see references 5, 6) and have shown that Fc $\gamma$ R crosslinking results in the rapid induction of phosphoinositide-specific phospholipase C (PLC) activity (7). The activated PLC hydrolyzes membrane phosphatidylinositol-4,5-bisphosphate into inositol-1,4,5-trisphosphate and *sn*-1,2-diacylglycerol, which, in turn, mediate the mobilization of intracellular calcium and the activation of protein kinase C,

respectively (8). Experiments with calcium ionophores and phorbol esters (1, 5, 6, 9) suggest critical roles for PLC-derived second messengers in the development of antibody-dependent cellular cytotoxicity. However, the mechanism that couples Fc $\gamma$ R stimulation to PLC activation remains unknown.

Transmembrane receptors can be coupled to PLC either via heterotrimeric G proteins or protein tyrosine kinases (PTK) (for reviews see references 10–12). For example, receptors with seven transmembrane regions such as the m1 muscarinic receptor can utilize G<sub>q/11</sub> to activate the PLC- $\beta$  family (13). In contrast, growth factor receptors with intrinsic PTK activity, such as the epidermal growth factor (EGF) and platelet-derived growth factor (PDGF) receptors, can directly tyrosine phosphorylate members of the PLC- $\gamma$  family (14–16). More recently, activation of the TCR, which does not contain an intrinsic PTK domain, has also been shown to induce the tyrosine phosphorylation of PLC- $\gamma$ 1 (17–19).

Using exogenous guanine nucleotides and permeabilized NK cells, we have recently demonstrated that the Fc $\gamma$ R-PLC coupling does not involve a G protein (20). However, the PTK inhibitor, herbimycin A, inhibits the Fc $\gamma$ R-induced PLC

activity, implicating a PTK-dependent event as critical in Fc $\gamma$ R-PLC coupling (20). In this study, we investigated which members of the PLC- $\gamma$  family are expressed in human NK cells, and whether any of these are tyrosine phosphorylated after Fc $\gamma$ R stimulation. Our initial characterization of the PLC- $\gamma$  family in NK cells showed that both isoforms, PLC- $\gamma$ 1 and PLC- $\gamma$ 2, were expressed. Subsequent experiments demonstrated that crosslinking of the Fc $\gamma$ R rapidly induced the tyrosine phosphorylation of both PLC- $\gamma$  isoforms. Finally, pretreatment of NK cells with the PTK inhibitor, herbimycin A, blocked both Fc $\gamma$ R-induced tyrosine phosphorylation of PLC- $\gamma$  and the receptor-mediated increase in inositol phosphate formation. Thus, our results demonstrate that both PLC- $\gamma$ 1 and PLC- $\gamma$ 2 are expressed in human NK cells and strongly suggest that these isoforms participate in Fc $\gamma$ R-induced phosphoinositide hydrolysis.

## Materials and Methods

**Cell Lines.** Human CD16<sup>+</sup> NK cell lines were isolated and passaged as previously described (7). The cell surface phenotype of these NK cell lines was monitored by flow cytometry. All clonal NK cell lines used in these studies were 100% CD16<sup>+</sup>/CD3<sup>-</sup>; polyclonal cell lines were >90% CD16<sup>+</sup>. In addition, all CD16<sup>+</sup> NK cells expressed the following additional phenotypic markers: CD56<sup>+</sup>, CD11b<sup>+</sup>, CD2<sup>+</sup>, and HLA-DR<sup>+</sup>. The human leukemic T cell line, Jurkat, was obtained from the American Type Culture Collection (Rockville, MD), and PjL-EBV is an EBV-transformed human B cell line.

**Chemical Reagents and Antibodies.** The PTK inhibitor, herbimycin A, was generously provided by Dr. Y. Uehara (Department of Antibiotics, National Institute of Health, Tokyo, Japan). All other chemicals and drugs, unless otherwise noted, were obtained from Sigma Chemical Co. (St. Louis, MO). Fluorescein and PE-conjugated mAb were obtained from Becton Dickinson Monoclonal Center (Mountain View, CA). PLC- $\gamma$ 1 antisera was obtained by immunizing New Zealand White rabbits with a PLC- $\gamma$ 1 peptide (bovine PLC- $\gamma$ 1 amino acid 1249–1262) chemically coupled to KLH (Calbiochem Corp., La Jolla, CA) by a *m*-maleimido-benzoyl-*N*-hydroxysuccinimide ester (Pierce Chemical Co., Rockford, IL). Similarly, PLC- $\gamma$ 2 antisera was obtained by immunizing New Zealand White rabbits with a KLH-coupled PLC- $\gamma$ 2 peptide (human PLC- $\gamma$ 2 amino acid 461–481). The anti-PLC- $\gamma$ 1 and anti-PLC- $\gamma$ 2 sera immunoprecipitated the predicted 150- and 140-kD molecular mass isoforms, respectively. Furthermore, anti-PLC- $\gamma$ 1 or anti-PLC- $\gamma$ 2 immunoprecipitated protein was detectable by immunoblotting with the same antiserum, but not by the antiserum to the other isoform.

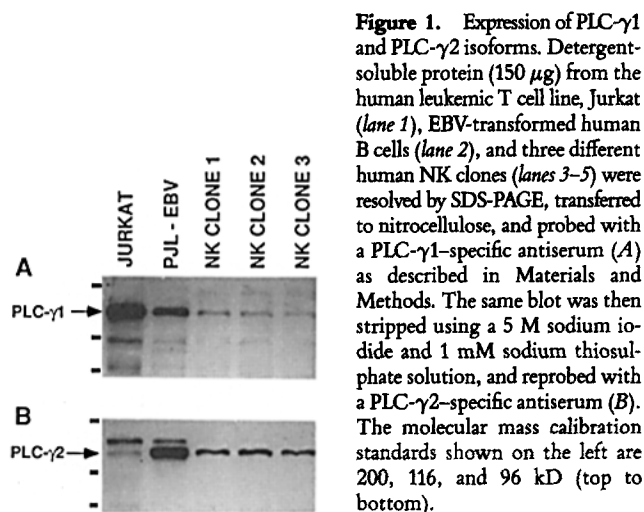
**PLC Immunoblotting.** 5–10  $\times$  10<sup>6</sup> cells were washed, pelleted, and lysed with buffer containing 10 mM Tris-HCl, 50 mM NaCl, 5 mM EDTA, 50 mM NaF, 30 mM Na<sub>4</sub>P<sub>2</sub>O<sub>7</sub>, 1 mM PMSF, 5  $\mu$ g/ml aprotinin, 10  $\mu$ g/ml leupeptin, and 1% Triton X-100, pH 7.4. Insoluble material was removed by centrifugation at 15,000 *g* for 15 min, and the protein content of the detergent-soluble fraction determined by the bicinchoninic acid (BCA) protein assay (Pierce Chemical Co., Rockford, IL) according to the manufacturer's instructions. Protein (150  $\mu$ g) was then resolved by discontinuous SDS-PAGE in 8.5% acrylamide gels and electrophoretically transferred to a nitrocellulose membrane. The membrane was blocked overnight in Tris-buffered saline (TBS) (50 mM Tris-HCl, 150 mM NaCl, pH 7.4) containing 2% milk and 0.2% polyoxyethylene sor-

bitan monolaurate (Tween 20) and incubated for 1 h with PLC- $\gamma$ 1- or PLC- $\gamma$ 2-specific antiserum (1:2000 dilution of anti-PLC- $\gamma$ 1 or 1:400 dilution of anti-PLC- $\gamma$ 2) in TBS containing 2% BSA, 0.2% Tween 20, and 0.05% NaN<sub>3</sub>. After three washes with 0.2% Tween 20 in TBS, immunoreactive proteins were detected with protein A-horseradish peroxidase and the enhanced chemiluminescence (ECL) detection system (Amersham Corp., Arlington Heights, IL).

**PLC- $\gamma$  Immunoprecipitation and Antiphosphotyrosine Immunoblotting.** Aliquots of NK cells (2–4  $\times$  10<sup>7</sup>/sample) were resuspended in 200  $\mu$ l of HBSS containing 10 mM Hepes, pH 7.2, and 1 mg/ml BSA. Cells were stimulated by adding 50  $\mu$ l of anti-Fc $\gamma$ RIII mAb (3G8) (final concentration, 10  $\mu$ g/ml) and goat F(ab')<sub>2</sub> fragment anti-mouse IgG (Organon Teknika Corp., West Chester, PA). After the indicated time, reactions were terminated by the addition of 4 volumes of ice-cold lysis buffer containing 20 mM Tris-HCl, 40 mM NaCl, 5 mM EDTA, 50 mM NaF, 30 mM Na<sub>4</sub>P<sub>2</sub>O<sub>7</sub>, and 500  $\mu$ M Na<sub>3</sub>VO<sub>4</sub>, 1 mM PMSF, 5  $\mu$ g/ml aprotinin, 10  $\mu$ g/ml leupeptin, and 1% Triton X-100, pH 7.4. After 10 min at 4°C, the samples were centrifuged (15,000 *g*, 15 min) to remove nuclear and cellular debris. Postnuclear supernatants were immunoprecipitated for 2 h at 4°C with PLC- $\gamma$ 1- or PLC- $\gamma$ 2-specific antisera bound to protein A-Sepharose beads. The immunoprecipitates were washed three times, bound proteins eluted with 50  $\mu$ l of SDS sample buffer, and resolved by SDS-PAGE as described above. The proteins were electrophoretically transferred to nitrocellulose membranes and antiphosphotyrosine immunoblotting was performed essentially as previously described (20). Briefly, nitrocellulose membranes were blocked overnight in TBS containing 4% BSA, 0.5% Tween 20 and 0.05% NaN<sub>3</sub>, and were then probed for 2 h with antiphosphotyrosine mAb 4G10 (Upstate Biotechnology, Inc., Lake Placid, NY) (1  $\mu$ g/ml in TBS with 0.5% Tween 20). The membranes were washed three times with 0.2% Tween 20 in TBS, and incubated for 45 min with rabbit anti-mouse IgG (H + L) (1  $\mu$ g/ml) (Pierce Chemical Co.) in TBS containing 2% BSA and 0.5% Tween 20. After three washes, immunoreactive proteins were detected with protein A-horseradish peroxidase and the ECL detection system from Amersham Corp.

## Results and Discussion

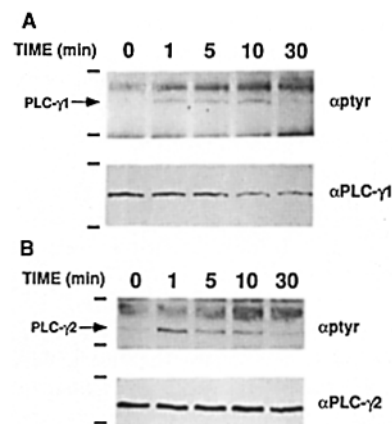
**Expression of PLC- $\gamma$  Isoforms in Human NK Cells.** We first examined whether PLC- $\gamma$ 1 and/or its closely related isoform, PLC- $\gamma$ 2, are expressed in human NK cells. Fig. 1 shows PLC- $\gamma$ 1 and PLC- $\gamma$ 2 immunoblots of equivalent amounts of detergent-soluble proteins from Jurkat cells (a human leukemic T cell line), EBV-transformed human B cells (PjL-EBV), and three different clonal human NK cell lines. Consistent with prior reports (17–19, 21), Jurkat cells expressed relatively high levels of PLC- $\gamma$ 1, migrating at an apparent molecular mass of 150 kD (Fig. 1 A, lane 1). The PLC- $\gamma$ 1 antiserum also detected the presence of PLC- $\gamma$ 1 in the three human NK clones (Fig. 1 A, lanes 3–5), albeit at lower levels than Jurkat. The same blot was stripped and reprobed with the PLC- $\gamma$ 2 antiserum (Fig. 1 B). Consistent with prior reports (22–24), relatively high levels of PLC- $\gamma$ 2 (migrating at 140 kD) were detected in EBV-transformed human B cells (Fig. 1 B, lane 2), whereas little PLC- $\gamma$ 2 was present in Jurkat (Fig. 1 B, lane 1). In each of the NK cell lines, significant amounts of PLC- $\gamma$ 2 were detected (Fig. 1 B, lanes 3–5). Our data suggest that both PLC- $\gamma$ 1 and PLC- $\gamma$ 2 are present in



**Figure 1.** Expression of PLC- $\gamma$ 1 and PLC- $\gamma$ 2 isoforms. Detergent-soluble protein (150  $\mu$ g) from the human leukemic T cell line, Jurkat (lane 1), EBV-transformed human B cells (lane 2), and three different human NK clones (lanes 3–5) were resolved by SDS-PAGE, transferred to nitrocellulose, and probed with a PLC- $\gamma$ 1-specific antiserum (A) as described in Materials and Methods. The same blot was then stripped using a 5 M sodium iodide and 1 mM sodium thiosulphate solution, and reprobed with a PLC- $\gamma$ 2-specific antiserum (B). The molecular mass calibration standards shown on the left are 200, 116, and 96 kD (top to bottom).

human NK cells, with PLC- $\gamma$ 2 being the more prominent immunoreactive isoform.

**Fc $\gamma$ R Crosslinking Induces the Tyrosine Phosphorylation of PLC- $\gamma$ 1 and PLC- $\gamma$ 2.** We next investigated whether PLC- $\gamma$ 1 and PLC- $\gamma$ 2 are direct substrates for Fc $\gamma$ R-induced tyrosine phosphorylation. NK cells were stimulated with crosslinked anti-Fc $\gamma$ R mAb (3G8), and then either PLC- $\gamma$ 1 or PLC- $\gamma$ 2 was immunoprecipitated with their respective antiserum. The immunoprecipitates were separated by SDS-PAGE, transferred to nitrocellulose, and immunoblotted with the antiphosphotyrosine mAb, 4G10. As shown in Fig. 2, Fc $\gamma$ R crosslinkage resulted in a rapid increase in the phosphotyrosine contents of both PLC- $\gamma$ 1 and PLC- $\gamma$ 2. Kinetic analyses indicated that tyrosine phosphorylation of both isoforms followed

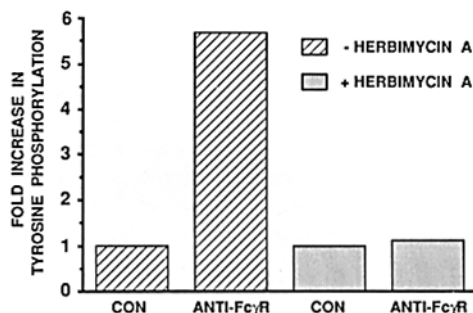


**Figure 2.** Kinetics of Fc $\gamma$ R-induced tyrosine phosphorylation of PLC- $\gamma$ 1 and PLC- $\gamma$ 2 in NK cells. Polyclonal NK cells ( $3.5\text{--}4 \times 10^7$  per sample) were stimulated with crosslinked anti-Fc $\gamma$ R mAb (3G8) for the indicated times. Anti-PLC- $\gamma$ 1 (A) or anti-PLC- $\gamma$ 2 (B) immunoprecipitates were resolved by SDS-PAGE and transferred to nitrocellulose. (A) The nitrocellulose was sequentially probed with antiphosphotyrosine antibody (top), and after stripping, with the PLC- $\gamma$ 1 antiserum (bottom). (B) The membrane was sequentially probed with antiphosphotyrosine antibody (top) and after stripping, with the PLC- $\gamma$ 2 antiserum (bottom). The molecular mass standards are 200 and 116 kD.

a similar time course, being detectable within 1 min after stimulation, remaining elevated for at least 10 min, and returning to basal level by 30 min (Fig. 2). Reanalyses of the nitrocellulose with the antiserum specific for each PLC- $\gamma$  isoform indicated that the kinetic changes were not due to Fc $\gamma$ R-induced alterations in the level of PLC protein expression. Sultzman et al. (25) have reported that in Rat-2 fibroblasts transfected with PLC- $\gamma$ 2, PDGF stimulation resulted in the tyrosine phosphorylation of both PLC- $\gamma$ 1 and PLC- $\gamma$ 2. Our data extend that study by demonstrating that in a cell type that endogenously expresses both PLC- $\gamma$ 1 and PLC- $\gamma$ 2, non-receptor PTK(s) activated by crosslinkage of a multisubunit receptor can phosphorylate both PLC- $\gamma$  isoforms.

**Herbimycin A Inhibits Fc $\gamma$ R-induced Tyrosine Phosphorylation of PLC- $\gamma$ .** To examine further the notion that the PTK-mediated phosphorylation of both PLC- $\gamma$  is a critical event in Fc $\gamma$ R-induced activation of PLC, we tested the effect of herbimycin A, a PTK inhibitor (26), on the Fc $\gamma$ R-induced tyrosine phosphorylation of the PLC- $\gamma$  isoforms. NK cells were treated with herbimycin A under conditions that we have previously shown to inhibit tyrosine phosphorylation and phosphoinositide hydrolysis in NK cells (3  $\mu$ M herbimycin A for 16 h) (20, 27). These same condition leave intact other protein kinase-dependent cellular responses such as the phorbol ester-induced phosphorylation of p56<sup>lck</sup> (20, 27). Pretreatment with herbimycin A effectively blocked the Fc $\gamma$ R-induced tyrosine phosphorylation of both PLC- $\gamma$ 1 (data not shown) and PLC- $\gamma$ 2 (Fig. 3). These results are consistent with a model in which Fc $\gamma$ R stimulation in NK cells rapidly activates an intracellular PTK, which, in turn, induces the tyrosine phosphorylation and activation of PLC- $\gamma$ .

Although none of the identified components of the multimeric Fc $\gamma$ R complex have been shown to possess intrinsic PTK activity, the Fc $\gamma$ R must be associated with an intracel-



**Figure 3.** Herbimycin A inhibits the Fc $\gamma$ R-induced tyrosine phosphorylation of PLC- $\gamma$ 2. NK cells were pretreated for 16 h either with (shaded bars) or without (hatched bars) 3  $\mu$ M herbimycin A, and then stimulated for 1 min with either media (control) or crosslinked anti-Fc $\gamma$ R mAb (3G8). PLC- $\gamma$ 2 immunoprecipitates were immunoblotted with antiphosphotyrosine antibody as described in Fig. 2. After detection of the immunoreactive protein with the ECL reagent, the developed films were subjected to densitometric analysis using the Image version 1.28 software (Wayne Rasband, National Institutes of Health, Research Services Branch, NIMH, Bethesda, MD) on a Macintosh IIfx (Cupertino, CA) and Hewlett-Packard ScanJet Plus (Sunnyvale, CA). The levels of tyrosine phosphorylation shown here are normalized to their respective amount of PLC- $\gamma$ 2 protein.

lular PTK. Candidate tyrosine kinases include members of the *src*-family (NK cells express P56<sup>lck</sup>, p62<sup>yes</sup>, p59<sup>lyn</sup>, and p56<sup>lyn</sup> [28]), and other nonreceptor PTK, such as p72<sup>syk</sup> (29) and PTK72 (30). The information provided in this report provides a foundation for evaluating the potential role of these intracellular PTK in the development of antibody-dependent cellular cytotoxicity. For example, it has become increasingly clear that the amino acid sequences of the SH2 domains of

specific enzymes can directly influence their association with phosphotyrosine-containing transmembrane or intracellular proteins (31). Since PLC- $\gamma$ 1 and PLC- $\gamma$ 2 differ in their SH2 domains, these differences may dictate unique associations with specific PTK, and raise the possibility that PLC- $\gamma$ 1 and PLC- $\gamma$ 2 may be differentially regulated in lymphoid cells through either intermolecular associations or phosphorylation.

---

The authors thank Christopher Dick for his excellent technical assistance; Paul Secrist for his assistance with the immunoprecipitation experiments; Yoshimura Uehara for his generous gift of herbimycin A; Jeffrey Ledbetter for advice on the preparation of the PLC- $\gamma$ 2 antisera; and Theresa Lee for her assistance with the preparation of this manuscript.

This research was supported by the Mayo Foundation and by National Institutes of Health grants CA-47752, CA-52995, and GM-47286.

Address correspondence to Dr. Paul J. Leibson, Department of Immunology, Mayo Clinic and Foundation, Rochester, MN 55905.

Received for publication 18 August 1992.

## References

1. Trinchieri, G. 1989. Biology of natural killer cells. *Adv. Immunol.* 47:187.
2. Young, J.D.-E., and Z.A. Cohn. 1986. Role of granule proteins in lymphocyte-mediated killing. *J. Cell. Biochem.* 32:151.
3. Goldfarb, R.H. 1986. Cell-mediated cytotoxic reactions. *Hum. Pathol.* 17:138.
4. Henkart, P., and C.C. Yue. 1988. The role of cytoplasmic granules in lymphocyte cytotoxicity. *Prog. Allergy.* 40:82.
5. Leibson, P.J. 1992. Signal transduction during NK cell activation. In *NK Cell-Mediated Cytotoxicity: Receptors, Signaling and Mechanisms*. E. Lotzova and R. Herberman, editors. CRC Press, Inc., Boca Raton. 129-146.
6. Brahmi, Z. 1992. Signal transduction mechanisms in NK cell cytotoxicity. In *NK Cell-Mediated Cytotoxicity: Receptors, Signaling and Mechanisms*. E. Lotzova and R. Herberman, editors. CRC Press, Inc., Boca Raton. 117-128.
7. Windebanks, K.P., R.T. Abraham, G. Powis, R.A. Olsen, T.J. Barna, and P.J. Leibson. 1988. Signal transduction during human natural killer cell activation: inositol phosphate generation and regulation by cyclic AMP. *J. Immunol.* 141:3951.
8. Berridge, M.J., and R.F. Irvine. 1989. Inositol phosphates and cell signalling. *Nature (Lond.)* 341:197.
9. Trinchieri, G.T., T. O'Brien, M. Shade, and B. Perussia. 1984. Phorbol esters enhance spontaneous cytotoxicity of human lymphocytes, abrogate Fc receptor expression, and inhibit antibody-dependent lymphocyte-mediated cytotoxicity. *J. Immunol.* 133:1869.
10. Rhee, S.G., and K.D. Choi. 1992. Regulation of inositol phospholipid-specific phospholipase C isozymes. *J. Biol. Chem.* 267:12393.
11. De Vivo, M., and M.C. Gershengorn. 1990. G proteins and phospholipid turnover. In *ADP-Ribosylating Toxins and G Proteins: Insights into Signal Transduction*. J. Moss and M. Vaughan, editors. American Society for Microbiology, Wash. DC. 267-293.
12. Ullrich, A., and J. Schlessinger. 1990. Signal transduction by receptors with tyrosine kinase activity. *Cell.* 61:203.
13. Berstein, G., J.L. Blank, A.V. Smrcka, T. Higashijima, P.C. Sternweis, J.H. Exton, and E.M. Ross. 1992. Reconstitution of agonist-stimulated phosphatidylinositol 4,5-bisphosphate hydrolysis using purified ml muscarinic receptor, G<sub>q/11</sub>, and phospholipase C- $\beta$ 1. *J. Biol. Chem.* 267:8081.
14. Meisenhelder, J., P.-G. Suh, S.G. Rhee, and T. Hunter. 1989. Phospholipase C- $\gamma$  is a substrate for the PDGF and EGF receptor protein-tyrosine kinases in vivo and in vitro. *Cell.* 57:1109.
15. Wahl, M.I., S. Nishibe, P.-G. Suh, S.G. Rhee, and G. Carpenter. 1989. Epidermal growth factor stimulates tyrosine phosphorylation of phospholipase C-II independently of receptor internalization and extracellular calcium. *Proc. Natl. Acad. Sci. USA.* 86:1568.
16. Wahl, M.I., N.E. Olashaw, S. Nishibe, S.G. Rhee, W.J. Pledger, and G. Carpenter. 1989. Platelet-derived growth factor induces rapid and sustained tyrosine phosphorylation of phospholipase C- $\gamma$  in quiescent BALB/c 3T3 cells. *Mol. Cell. Biol.* 9:2934.
17. Secrist, J.P., L. Karnitz, and R.T. Abraham. 1991. T-cell antigen receptor induces tyrosine phosphorylation of phospholipase C- $\gamma$  1. *J. Biol. Chem.* 266:12135.
18. Park, D.J., H.W. Rho, and S.G. Rhee. 1991. CD3 stimulation causes phosphorylation of phospholipase C- $\gamma$ 1 on serine and tyrosine residues in a human T-cell line. *Proc. Natl. Acad. Sci. USA.* 88:5453.
19. Weiss, A., G. Koretzky, R.C. Schatzman, and T. Kadlecik. 1991. Functional activation of the T-cell antigen receptor induces tyrosine phosphorylation of phospholipase C- $\gamma$ 1. *Proc. Natl. Acad. Sci. USA.* 88:5484.

20. Ting, A.T., K.E. Einspahr, R.T. Abraham, and P.J. Leibson. 1991. Fc $\gamma$  receptor signal transduction in natural killer cells. Coupling to phospholipase C via a G protein-independent, but tyrosine kinase-dependent pathway. *J. Immunol.* 147:3122.
21. Goldfien, R.D., W.E. Seaman, W.M. Hempel, and J.B. Imboden. 1991. Divergent regulation of phospholipase C- $\alpha$  and phospholipase C- $\gamma$  transcripts during activation of a human T cell line. *J. Immunol.* 146:3703.
22. Hempel, W.M., and A.L. DeFranco. 1991. Expression of phospholipase C isozymes by murine B lymphocytes. *J. Immunol.* 146:3713.
23. Hempel, W.M., R.C. Schatzman, and A.L. DeFranco. 1992. Tyrosine phosphorylation of phospholipase C- $\gamma$ 2 upon cross-linking of membrane Ig on murine B lymphocytes. *J. Immunol.* 148:3021.
24. Coggeshall, K.M., J.C. McHugh, and A. Altman. 1992. Predominant expression and activation-induced tyrosine phosphorylation of phospholipase C- $\gamma$ 2 in B lymphocytes. *Proc. Natl. Acad. Sci. USA.* 89:5660.
25. Sultzman, L., C. Ellis, L.-L. Lin, T. Pawson, and J. Knopf. 1991. Platelet-derived growth factor increases the in vivo activity of phospholipase C- $\gamma$ 1 and phospholipase C- $\gamma$ 2. *Mol. Cell. Biol.* 11:2018.
26. Uehara, Y., and H. Fukazawa. 1991. Use and selectivity of herbimycin A as inhibitor of protein-tyrosine kinases. *Methods Enzymol.* 201:370.
27. Einspahr, K.J., R.T. Abraham, B.A. Binstadt, Y. Uehara, and P.J. Leibson. 1991. Tyrosine phosphorylation provides an early and requisite signal for the activation of natural killer cell cytotoxic function. *Proc. Natl. Acad. Sci. USA.* 88:6279.
28. Eiseman, E., J.B. Bolen. 1990. *src*-Related tyrosine protein kinases as signaling components in hematopoietic cells. *Cancer Cells (Cold Spring Harbor).* 2:303.
29. Taniguchi, T., T. Kobayashi, J. Kondo, K. Takahashi, H. Nakamura, J. Suzuki, K. Nagai, T. Yamada, S. Nakamura, and H. Yamamura. 1991. Molecular cloning of a porcine gene *syk* that encodes a 72-kDa protein-tyrosine kinase showing high susceptibility to proteolysis. *J. Biol. Chem.* 266:15790.
30. Zioncheck, T.F., M.L. Harrison, C.C. Isaacson, and R.L. Geahlen. 1988. Generation of an active protein-tyrosine kinase from lymphocytes by proteolysis. *J. Biol. Chem.* 263:19195.
31. Fantl, W.J., J.A. Escobedo, G.A. Martin, C.W. Turck, M. del Rosario, F. McCormick, and L.T. Williams. 1992. Distinct phosphotyrosines on a growth factor receptor bind to specific molecules that mediate different signaling pathways. *Cell.* 69:413.