




## REVIEW

### Excitation–Contraction Coupling

# Mutations in proteins involved in E-C coupling and SOCE and congenital myopathies

Daniela Rossi<sup>1,2</sup> , Maria Rosaria Catallo<sup>1</sup> , Enrico Pierantozzi<sup>1</sup>, and Vincenzo Sorrentino<sup>1,2</sup> 

In skeletal muscle,  $\text{Ca}^{2+}$  necessary for muscle contraction is stored and released from the sarcoplasmic reticulum (SR), a specialized form of endoplasmic reticulum through the mechanism known as excitation–contraction (E-C) coupling. Following activation of skeletal muscle contraction by the E-C coupling mechanism, replenishment of intracellular stores requires reuptake of cytosolic  $\text{Ca}^{2+}$  into the SR by the activity of SR  $\text{Ca}^{2+}$ -ATPases, but also  $\text{Ca}^{2+}$  entry from the extracellular space, through a mechanism called store-operated calcium entry (SOCE). The fine orchestration of these processes requires several proteins, including  $\text{Ca}^{2+}$  channels,  $\text{Ca}^{2+}$  sensors, and  $\text{Ca}^{2+}$  buffers, as well as the active involvement of mitochondria. Mutations in genes coding for proteins participating in E-C coupling and SOCE are causative of several myopathies characterized by a wide spectrum of clinical phenotypes, a variety of histological features, and alterations in intracellular  $\text{Ca}^{2+}$  balance. This review summarizes current knowledge on these myopathies and discusses available knowledge on the pathogenic mechanisms of disease.

## Introduction

Calcium ion ( $\text{Ca}^{2+}$ ) represents a central second messenger in eukaryotic cells, where it governs a plethora of cellular processes, including cell proliferation, secretion, and metabolism, among many others (Berridge et al., 2000). In striated and smooth muscle cells, it also plays the fundamental role of regulating muscle contraction by activating the actomyosin complex (Dulhunty, 2006). To perform all these functions, cells must accurately regulate the intracellular  $\text{Ca}^{2+}$  concentration by both controlling  $\text{Ca}^{2+}$  exchange with the extracellular environment and establishing intracellular  $\text{Ca}^{2+}$  stores for prompt utilization (Bootman and Bultynck, 2020). In skeletal muscle, most of the  $\text{Ca}^{2+}$  used during contraction cycles comes from the sarcoplasmic reticulum (SR), a specialized form of endoplasmic reticulum (ER), that forms a complex network of tubules and cisternae wrapping the myofibrils in a sleeve-like structure. The SR is composed of two distinct domains: the longitudinal SR (l-SR) and the junctional SR (j-SR). The l-SR is the main site of  $\text{Ca}^{2+}$  uptake from the sarcoplasm, thanks to the presence of sarco/endoplasmic reticulum  $\text{Ca}^{2+}$  ATPase (SERCA) pumps, while the j-SR associates with sarcolemma transverse tubules (T-tubules) to form the triads, where the ryanodine receptor type 1 (RYR1)  $\text{Ca}^{2+}$  release channels are localized (Franzini-Armstrong, 2018).

Triads represent the membrane structures that support the excitation–contraction (E-C) coupling mechanism in skeletal muscle fibers, providing a site where dihydropyridine receptor (DHPR) and RYR1 can physically interact to activate  $\text{Ca}^{2+}$  release following membrane depolarization (Meissner and Lu, 1995). A third essential component of the E-C coupling machinery is the adaptor protein SH3 and cysteine-rich domain 3 (STAC3). DHPR is a voltage-dependent L-type  $\text{Ca}^{2+}$  channel located on the T-tubules that, following membrane depolarization induced by motor-neuron stimulation, undergoes a conformational change that allows the opening of RYR1. The skeletal muscle DHPR is composed of a heteromultimeric complex that includes the  $\alpha 1s$ ,  $\alpha 2$ ,  $\delta$ ,  $\beta 1\alpha$ , and  $\gamma 1$  subunits (Flucher, 2020). The  $\alpha 1s$  subunit (also referred to as Cav1.1) is an integral membrane protein containing four transmembrane domains, each composed of six  $\alpha$ -helices, acting as the pore-forming and the voltage-sensing unit (Hu et al., 2015). Trafficking of the  $\alpha 1s$  subunit and coupling with RYR1 is regulated by STAC3 (Polster et al., 2016). Opening of RYR1 channels results in massive  $\text{Ca}^{2+}$  release from the SR into the myoplasm, which in turn triggers muscle contraction (Dulhunty, 2006). In addition to RYR1, a second isoform, RYR3, is expressed in skeletal muscle, although only RYR1 is essential for E-C coupling activation. At variance with RYR1,

<sup>1</sup>Department of Molecular and Developmental Medicine, University of Siena, Siena, Italy; <sup>2</sup>Interdepartmental Program of Molecular Diagnosis and Pathogenetic Mechanisms of Rare Genetic Diseases, Azienda Ospedaliero Universitaria Senese, Siena, Italy.

Correspondence to Vincenzo Sorrentino: [vincenzo.sorrentino@unisi.it](mailto:vincenzo.sorrentino@unisi.it)

This work is part of a special issue on excitation–contraction coupling.

© 2022 Rossi et al. This article is available under a Creative Commons License (Attribution 4.0 International, as described at <https://creativecommons.org/licenses/by/4.0/>).

RYR3 channels are mainly expressed in neonatal versus adult muscles and are activated by a  $\text{Ca}^{2+}$ -induced  $\text{Ca}^{2+}$ -release (CICR) mechanism, independently of the interaction with DHPR (Rossi and Sorrentino, 2002).

In addition to DHPR, RYR1, and STAC3, which are essential for E-C coupling, other proteins are localized at triads and regulate this mechanism, including junctophilins (JPHs), triadin, junctin, and calsequestrin (CASQ; Rossi et al., 2022a). JPHs mediate triad assembly and maintenance by both establishing the apposition between j-SR cisternae and T-tubules and acting as a scaffold for the assembly of the  $\text{Ca}^{2+}$  release complex (Phimister et al., 2007; Golini et al., 2011; Nakada et al., 2018; Rossi et al., 2019a). In mammals, JPH1 and JPH2 are expressed in striated muscles (Takeshima et al., 2000). Triadin and junctin are transmembrane proteins composed by a cytoplasmic N-terminal domain (NTD) and a luminal C-terminal segment (Zhang et al., 1997; Dulhunty et al., 2009; Marty, 2015). They act as functional regulator of E-C coupling by interacting with RYRs (Guo and Campbell, 1995; Zhang et al., 1997; Caswell et al., 1999; Li et al., 2015; Rossi et al., 2022b), CASQ (Kobayashi et al., 2000; Shin et al., 2000; Boncompagni et al., 2012; Rossi et al., 2014; Rossi et al., 2021), and the histidine-rich  $\text{Ca}^{2+}$ -binding protein (Lee et al., 2001). Triadin also plays a structural role in supporting triad architecture by interacting with the microtubule-binding protein climp-63, also known as cytoskeleton-associated protein 4 (Osseni et al., 2016). CASQ is an intraluminal SR soluble protein with high capacity and low-affinity  $\text{Ca}^{2+}$ -binding properties. CASQ is the main  $\text{Ca}^{2+}$  buffering protein of the SR, although recent evidence shows that it can display a more complex regulatory role in  $\text{Ca}^{2+}$  homeostasis (see below; Beard et al., 2004; Protasi et al., 2011; Beard and Dulhunty, 2015; Manno et al., 2017; Rossi et al., 2021). Two isoforms of CASQ have been identified: CASQ1 is expressed in fast- and slow-twitch skeletal muscle fibers, whereas CASQ2 is expressed in slow-twitch skeletal muscle fibers and cardiac muscle (Biral et al., 1992).

For many years,  $\text{Ca}^{2+}$  entry from the extracellular environment was believed to play only a marginal role in muscle physiology and contraction. However, new evidence has accumulated indicating that  $\text{Ca}^{2+}$  influx through the store-operated calcium entry (SOCE) mechanism, mediated by stromal interaction molecule 1 (STIM1), a  $\text{Ca}^{2+}$  sensor in the SR, and ORAI1, a selective  $\text{Ca}^{2+}$  channel on the plasma membrane, is also fundamental to refill intracellular  $\text{Ca}^{2+}$  stores and sustain prolonged activity of skeletal muscle fibers (Launikonis and Rios, 2007; Michelucci et al., 2018). In past decades, while gaining an incredible amount of information on structural and functional aspects that support the mechanisms that govern  $\text{Ca}^{2+}$  release through the RYR1 channels, we have also recognized that mutations in genes that code for proteins involved in  $\text{Ca}^{2+}$  handling are causative of inherited myopathies. In this review, we provide an overview of the main aspects of muscle diseases linked to mutations in  $\text{Ca}^{2+}$ -handling proteins in skeletal muscle, focusing on the E-C coupling and SOCE mechanisms.

### E-C coupling and congenital myopathies: RYR1, CACNA1S, and STAC3

In humans, the RYR1 gene codes for a protein of 5,038 amino acids that assembles in tetramers of >2 MD. Structural cryo-EM

studies showed that each monomer has a large N-terminal cytoplasmic region, six transmembrane domains that define the pore region, and a small cytoplasmic C-terminal portion (Efremov et al., 2015; Yan et al., 2015; Zalk et al., 2015; des Georges et al., 2016). As reported in Fig. 1, these studies showed that the cytoplasmic region is composed by an  $\alpha$ -solenoid scaffold and some globular domains. The  $\alpha$ -solenoid scaffold is formed by four segments, and it is capped, at the N-terminus, by two distinct NTDs, NTD-A and NTD-B; these are immediately followed by the first segment, the N-solenoid (N-sol), connected to the SP1/a ryanodine receptor domain (SPRY1) domain. This is followed by a pair of RYR repeats (RY1&2). Two other SPRY domains (SPRY2 and 3) are localized upstream of the second and the third solenoids, the junctional (J-sol) and the bridging (B-sol) solenoids, respectively, that are followed by a second pair of RYR repeats (RY3&4). Finally, the fourth and last solenoid, called the core solenoid (C-sol), precedes an EF-hand domain (Efremov et al., 2015; Yan et al., 2015; Zalk et al., 2015; des Georges et al., 2016). The high flexibility of the  $\alpha$ -solenoid scaffold of RYR1 facilitates the interaction of the channel with regulatory proteins and molecules, such as  $\text{Ca}^{2+}$ ,  $\text{Mg}^{2+}$ , ATP, FK-binding protein 12, or calmodulin, and contains consensus sequences for posttranslational modification by kinases and phosphatases (Lanner et al., 2010; Hernández-Ochoa et al., 2015; Yan et al., 2015; Zalk et al., 2015; des Georges et al., 2016; Woll and Van Petegem, 2022). The transmembrane pore region presents a fold shape with six transmembrane helices (S1-S6): S1-S4 form a pseudo voltage-sensor domain (pVSD), while S5 and S6 helices from the four subunits form the pore of the channel. The S6 helix extends into the cytosol, terminating in the C-terminal domain (CTD), a small  $\alpha$ -helical domain that contains a  $\text{Zn}^{2+}$ -binding domain that contacts the cytosolic region called “thumb-and-forefinger” located within the C-sol (Woll and Van Petegem, 2022).

Mutations in RYR1 represent the most frequent cause of nondystrophic congenital muscle diseases, which are thus referred to as RYR1-related myopathies, and of malignant hyperthermia (MH; Kushnir et al., 2018). According to an historical view, mutations in RYR1 were described to be clustered in three distinct hotspots, located at the NTD, in the central region, and at the CTD (Rossi and Sorrentino, 2002; Lawal et al., 2018). Nevertheless, over the years, >500 variants have been identified also outside these hotspots, although, currently, not all have been verified as causative (Kushnir et al., 2020). In Fig. 1, the distribution of all known variants identified as of today in the RYR1 coding sequence is reported. The position of those mutations validated as causative for MH by the European Malignant Hyperthermia Group (EMHG) is shown in red. Coincidentally, nearly all the mutations validated as causative by the EMHG are within the three hotspot regions. Recent cryo-EM studies revealed that several mutations are positioned near the fourfold symmetry axis, at sites of interaction between the RYR1 subunits or at sites of interaction between domains in the same subunit, resulting in destabilization of the closed state of the channel (Tung et al., 2010; des Georges et al., 2016; Gong et al., 2021; Woll et al., 2021; Woll and Van Petegem, 2022).

From a functional point of view, pathological mechanisms due to RYR1 mutations have been grouped into three main

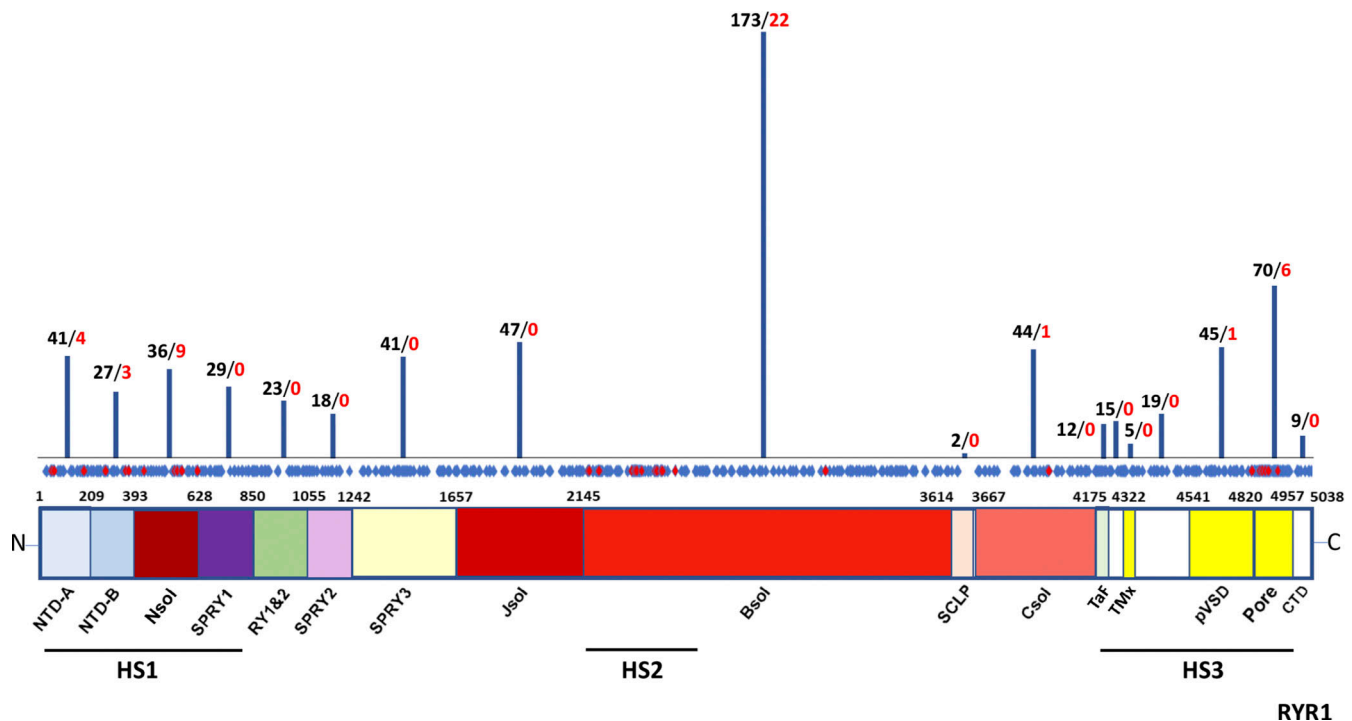


Figure 1. **RYR1 pathological amino acid variants aligned with corresponding RYR1 structural regions.** Black numbers on top of the bars indicate the number of different variants in the corresponding RYR1 protein domains identified in patients to date, according to Kushnir et al., 2020 and Global Variome shared LOVD (<https://databases.lovd.nl/shared/variants/RYR1>). Red numbers indicate diagnostic MH RYR1 mutations in the corresponding RYR1 domain, according to the EMHG. Distribution of the different aa variants ( $n = 656$ , blue boxes), including MH-causative aa variants ( $n = 46$ , red boxes), throughout the RYR1 aa sequence is reported in the horizontal bar. RYR1 was subdivided into domains according to des Georges et al., 2016. The position of the initial aa of each domain is indicated. SCLP, shell-core linker peptide; TaF, thumb and forefingers domain; TMx, auxiliary transmembrane helices; Pore, channel pore domain.

categories: (1) mutations causing a gain of function, (2) mutations causing a loss of function, and (3) mutations causing a reduction in RYR1 protein content (Treves et al., 2008). For convenience, in this review, mutations are listed according to their position in the human *RYR1* gene and protein.

#### Gain-of-function mutations in RYR1: in vitro characterization and related mouse models

*RYR1* gain-of-function mutations can result in either hypersensitivity of the channels to physiological triggers or  $\text{Ca}^{2+}$  leak. Hypersensitivity is typically associated with MH mutations, since exposure to specific triggers, such as halogenated anesthetics, by lowering the threshold for RYR1 activation, induced a massive and uncontrolled  $\text{Ca}^{2+}$  efflux from the SR that leads to sustained muscle contraction and a hypermetabolic state (Tong et al., 1997). Among MH-causative mutations, R614C is one of the best characterized, since it is the first mutation identified in humans and is also naturally present in domestic swine populations affected by porcine stress syndrome, an MH-like crisis induced by stress, heat, or volatile anesthetics (Fujii et al., 1991; Gillard et al., 1991; MacLennan and Phillips, 1992). The R614C mutation typically confers hypersensitivity to caffeine and halothane without significantly altering the cytosolic or the luminal  $\text{Ca}^{2+}$  concentrations (Tong et al., 1997; Tong et al., 1999; Brini et al., 2005). In addition, studies performed in HEK293T cells showed that this mutation sensitizes RYR1 channels to activation

by luminal  $\text{Ca}^{2+}$  by lowering the threshold for so-called store overload-induced calcium release (SOICR; Jiang et al., 2008). This mechanism was first described in cardiac muscle, where expression of some mutations in RYR2 associated with catecholaminergic polymorphic ventricular tachycardia resulted in channel opening induced by elevation of luminal  $\text{Ca}^{2+}$  (Venetucci et al., 2008). This mechanism was later confirmed in skeletal muscle for the R614C mutation, and also for other RYR1 variants (R2163H, G2434R, R2435L, R2435H, R2454H, Y4796C, T4826I, L4838V, A4940T, G4943V, and P4973L; Chen et al., 2017).

Other mutations in *RYR1*, such as R163C or Y522S, resulted in a spontaneous and continuous  $\text{Ca}^{2+}$  leak from the SR that caused chronic elevation in resting cytosolic  $\text{Ca}^{2+}$  and reduction of the SR  $\text{Ca}^{2+}$  content (Tong et al., 1999; Chen et al., 2017). These conditions result in impaired muscle contraction, mitochondrial damage, and appearance of typical cores negative for oxidative enzyme staining, characteristic of central core disease (CCD; Loke and MacLennan, 1998). Over the years, however, the partition between mutations resulting in hypersensitive and leaky channels has become less clear-cut. As an example, low levels of spontaneous  $\text{Ca}^{2+}$  release were also observed in dyspedic myotubes expressing RYR1 channels carrying R614C, R2163C, or T4825I mutations, mainly associated with MH (Dirksen and Avila, 2002; Dirksen and Avila, 2004). Similarly, HEK293T cells expressing RYR1 channels carrying R163C,

I403M, Y522S, R2163H, and R2436H mutations, typically associated with CCD, showed lower thresholds for caffeine- and halothane-induced  $\text{Ca}^{2+}$  release (Tong et al., 1997; Tong et al., 1999); this suggests the existence of a partial overlap in the functional behavior among different RYR1 mutations that, at the clinical level, may explain the existence of mixed MH and CCD phenotypes where a fraction of patients affected by CCD may also show susceptibility to MH.

In the attempt to understand the pathogenic mechanisms leading to either MH or CCD, four knock-in mouse models were generated, with the isogenic mutations corresponding to human RYR1 R163C (Yang et al., 2006), Y522S (Chelu et al., 2006), G2434R (Lopez et al., 2018), and T4825I (Yuen et al., 2012) mutations. All four mouse models exhibit anesthetic-triggered MH episodes and environmental heat stress, and analysis of the functional properties of mutant channels confirmed the results previously obtained using cellular models.

In detail, homozygous and heterozygous mice carrying the MH-associated mutations G2434R and T4825I are viable and display all typical hallmarks of MH, with a severity rate dependent on gene dose (homozygous > heterozygous) and sex (male > female; Yuen et al., 2012; Lopez et al., 2018). In contrast, homozygous mice for the CCD-associated mutations, e.g., R163C and Y522S, show a more severe phenotype: *Ryr1*<sup>R163C/R163C</sup> mice die in utero at approximately embryonic day 17–18 (E17–18; Yang et al., 2006), and *Ryr1*<sup>Y522S/Y522S</sup> mice show respiratory failure, skeletal deformities, dysmorphic muscle, likely arising from severe defects in myogenesis and bone formation, and die between E17.5 and postnatal day 1 (Chelu et al., 2006). Heterozygous mice for both R163C and Y522S show the typical hallmarks of MH upon exposure to volatile anesthetics, but unfortunately, they show a different phenotype as it concerns the formation of cores. Indeed, cores are not observed in *Ryr1*<sup>R163C</sup> mice in either the homozygous or heterozygous state (Chelu et al., 2006). In contrast, *Ryr1*<sup>Y522S/WT</sup> mice show structural alterations similar to those observed in humans (Boncompagni et al., 2009). Characterization of these mice depicted a hypothetical timeline for core formation that (1) starts with mitochondrial damage and formation of early cores at 2–4 mo of age; (2) evolves to formation of contracture cores that completely lack mitochondria and triads and present shortened sarcomeres; and (3) finally results in the development of unstructured cores with larger areas lacking mitochondria and contractile filaments (Boncompagni et al., 2009). The different phenotypes of these two CCD mouse models and the apparent inconsistency in mirroring the typical features of the human disease leave open the question about the nature of causative mechanisms leading to core formation. Differences between species and/or in the genetic background may be considered critical aspects.

The further characterization of these mouse models revealed that, in addition to inducing alterations in muscle contraction and/or structure, these RYR1 mutations can impact on other aspects of muscle biology that were not previously considered. For example, extracellular  $\text{Ca}^{2+}$  entry was shown to be altered in some of these mouse models, and it was proposed that this may contribute, in the short or long term, to exacerbate muscle impairment (Yang et al., 2007; Cherednichenko et al., 2008;

Bannister et al., 2010; Estève et al., 2010; Eltit et al., 2013; Yarotskyy et al., 2013; Lamboley et al., 2021). In *Ryr1*<sup>G2434R/WT</sup> and *Ryr1*<sup>T4826I/WT</sup> mice, the decrease in SR  $\text{Ca}^{2+}$  content due to channel leakage activates SOCE and increases mitochondrial  $\text{Ca}^{2+}$  uptake (Yang et al., 2007; Lamboley et al., 2021). This is, initially, translated into activation of a preserving mechanism that leads to increased ATP production to support the greater demand of ATP exerted by SERCA pumps in their continuous activity to counteract  $\text{Ca}^{2+}$  leak (Lamboley et al., 2021). Nevertheless, in the long term, mitochondria from both *Ryr1*<sup>G2434R/WT</sup> and *Ryr1*<sup>T4826I/WT</sup> mice showed structural and functional alterations, mainly in fatty acid metabolisms, that resulted in lipotoxicity and an increase in oxidative stress, impacting muscle bioenergetics and muscle performance (Yuen et al., 2012; Chang et al., 2020). Similarly, muscles from *Ryr1*<sup>R163C/WT</sup> mice show an increase in excitation contraction calcium entry (ECCE) linked to delayed inactivation of L-type currents through DHPR (Cherednichenko et al., 2008; Bannister et al., 2010; Estève et al., 2010); both *Ryr1*<sup>R163C/WT</sup> and *Ryr1*<sup>Y522S/WT</sup> also display an increase in SOCE that may contribute to  $\text{Ca}^{2+}$  overload, hypercontractures, heat generation, and rhabdomyolysis (Eltit et al., 2013; Yarotskyy et al., 2013). Whether these alterations also occur in muscles from patients carrying the same mutations is still to be defined.

Finally, the persistent  $\text{Ca}^{2+}$  leak observed in *Ryr1*<sup>Y522S/WT</sup> knock-in mice was proposed to lead to increased production of oxidative stress and reactive nitrogen species (RNS) that result in posttranslational modifications of RYR1, which in turn further enhance channel activity. In this way, a destructive feed-forward cycle is activated, leading (in acute conditions) to sudden death or inducing (over time) mitochondrial damage (Durham et al., 2008; Lanner et al., 2012; Manno et al., 2013; Canato et al., 2019). Interestingly, the use of 5-aminoimidazole-4-carboxamide ribonucleoside, a compound that, in this context, can inhibit  $\text{Ca}^{2+}$  leakage through RYR1 channels, prevented heat-induced death in *Ryr1*<sup>Y522S</sup> mice (Lanner et al., 2012); furthermore, treatment with the antioxidant drug N-acetylcysteine significantly reduced mitochondrial damage, contributing to improved muscle function (Michelucci et al., 2017a).

#### Loss-of-function mutations in RYR1: in vitro characterization and related mouse model

RYR1 loss-of-function mutations result in reduction of  $\text{Ca}^{2+}$  release due to either an impairment of RYR1 and DHPR functional coupling, through the so called “uncoupling” mechanism (Avila et al., 2001; Avila et al., 2003), or a reduced channel opening resulting from alterations in sites of interaction with endogenous activators (Yuan et al., 2021). The majority of uncoupling mutations are localized in the C-terminal region of the channel containing the pore domain, within the <sup>4895</sup>GGGIGDE<sup>4901</sup> amino acid sequence in humans (Gillespie et al., 2014). The first described loss-of-function mutation in RYR1 was I4898T, identified in patients affected by CCD (Lynch et al., 1999). Although preliminary experiments performed on heterologous channels expressed in HEK293T cells or lymphocytes from patients carrying the I4898T mutation reported an increase in SR  $\text{Ca}^{2+}$  leak (Lynch et al., 1999; Tilgen et al., 2001), further functional characterization gave



opposite and surprising results. Indeed, when expressed in HEK293T cells or dyspedic myotubes, both caffeine- and voltage-induced  $\text{Ca}^{2+}$  release from homozygous channels were completely abolished, while a significant reduction in caffeine- and voltage-induced  $\text{Ca}^{2+}$  release was observed in cells expressing heterozygous channels (Avila et al., 2001; Avila et al., 2003; Xu et al., 2008). No alterations in cytosolic or SR  $\text{Ca}^{2+}$  levels were observed, suggesting that the pathogenic mechanism associated with this mutation had to be different from that proposed for mutations leading to leaky channels (Avila et al., 2003). To further characterize the RYR1 I4898T mutation, a mouse model was generated by Zvaritch et al. (2007). Homozygous *Ryr1*<sup>I4898T</sup> mice die after birth and are paralyzed due to complete lack of voltage-induced  $\text{Ca}^{2+}$  release. Skeletal muscle development is arrested at early stages of myoblast fusion, with impairment of myofibrillogenesis, resembling that observed in dyspedic mice (Takeshima et al., 1994; Zvaritch et al., 2007). Heterozygous *Ryr1*<sup>I4898T/WT</sup> mice show a slow progressive congenital myopathy with variable expression of minicores, cores, and rods (Zvaritch et al., 2009), mirroring, in some way, the variable penetrance of this mutation observed in humans. It must be stated, however, that minicores or nemaline rods are not usually observed in humans carrying the RYR1 I4898T mutation and that CCD is considered a nonprogressive disease, indicating that this model did not completely fit with the histological and clinical aspects observed in humans carrying the same mutation. A second *Ryr1*<sup>I4898T</sup> mouse model generated on a different genetic background developed a mild myopathy that was much more similar to human CCD, suggesting that the genetic background plays a relevant role in disease onset and development (Boncompagni et al., 2010; Loy et al., 2011). Indeed, these mice show a preferential involvement of type I fibers that present with areas of Z line streaming and lacking mitochondria, comparable to core regions observed in type I fibers of CCD patients (Boncompagni et al., 2010).

Nevertheless, the possible mechanism of core formation in the *Ryr1*<sup>I4898T/WT</sup> mouse models was not completely unraveled. An interesting point concerns the possible involvement of mitochondria in core formation: indeed, unlike *Ryr1*<sup>Y522S/WT</sup>, damaged mitochondria and contraction cores were only rarely observed in muscles from the *Ryr1*<sup>I4898T/WT</sup> mouse model, although they were found to be displaced within a region of structural alteration; the authors could only suggest that the structural alterations observed in type I fibers may be due to long-term mechanical stress mainly affecting postural muscles (Loy et al., 2011). A third mouse model carrying the RYR1 I4898T mutation was generated on yet another genetic background, and these mice also presented with a mild phenotype (Lee et al., 2017). The characterization of this mouse model focused on a novel possible mechanism of disease based on the observation that this mutation correlates, in these mice, with occurrence of a persistent increase in ER stress/unfolded protein response (UPR) that results in a decrease in protein synthesis and an increase in mitochondrial  $\text{Ca}^{2+}$  uptake, reactive oxygen species (ROS) production, and induction of apoptosis. According to the authors, since residue I4898 is localized in proximity of the RYR1 sequence involved in triadin binding, mutation in this residue

causes a reduction in triadin binding and content. Given the interaction between triadin and CASQ, this also leads to mislocalization of CASQ, resulting in induction of ER stress/UPR. In support of this hypothesis, the use of the chemical chaperone 4-phenylbutyric acid resulted in a significant improvement of muscle function, suggesting that the ER stress/UPR pathway contributes significantly to development of CCD caused by the I4898T mutation (Lee et al., 2017).

In addition, RYR1 mutations L4647P, F4857S, G4891R, R4893W, G4899E, G4899R, A4906V, R4914G, and D4918N were found to display a loss of voltage-induced  $\text{Ca}^{2+}$  release, further supporting the idea that the <sup>4895</sup>GGGIGDE<sup>4901</sup> amino acid sequence and sequences in close proximity to this region are required for functional E-C coupling (Monnier et al., 2001; Tilgen et al., 2001; Avila et al., 2003; Kraeva et al., 2013; Parker et al., 2017).

RYR1 mutations that reduce channel opening by endogenous regulators such as ATP and  $\text{Ca}^{2+}$  can also be considered among loss-of-function mutations. Indeed, millimolar ATP concentrations enhance  $\text{Ca}^{2+}$ -dependent activation of RYR1, resulting in increased open probability of the channels (Chan et al., 2000). Micromolar concentrations of cytosolic  $\text{Ca}^{2+}$  activate RYR1 channels, while at millimolar concentrations,  $\text{Ca}^{2+}$  acts as a channel inhibitor (Meissner et al., 1986). Indeed, the RYR1 mutation T4980M, associated with a recessive form of congenital myopathy with cores, is located within the RYR1 ATP-binding site (Klein et al., 2011; Maggi et al., 2013). Functional studies showed that this mutation results in reduced channel activation, which may explain the muscle weakness observed in humans (Yuan et al., 2021). Similarly, the Q3969K mutation, linked to a form of CCD, is located close to the  $\text{Ca}^{2+}$  binding site of RYR1 and results in a reduction in  $\text{Ca}^{2+}$ -dependent channel activation (Yuan et al., 2021).

#### Mutations causing a reduction in RYR1 protein content: related mouse models

A third mechanism of disease for RYR1-related myopathies is associated with a decrease in the overall RYR1 protein levels; this is usually correlated with the presence of compound heterozygous mutations, where the first mutation causes a premature termination codon and the second is a missense mutation (Monnier et al., 2008; Bevilacqua et al., 2011; Cacheux et al., 2015; Brennan et al., 2019). Disease severity is linked to the nature of the mutation present in the expressed second allele as well as on the residual expression of the first hypomorphic allele (Brennan et al., 2019; Elbaz et al., 2019). Reduction in RYR1 protein content, due to compound heterozygous mutations, has been reported in several RYR1-related myopathies including CCD, multimicore disease (MmD), centronuclear myopathy (CNM), congenital fiber type disproportion (CFTD), dusty core disease (DuCD), and core rod myopathy (CRM; Ogasawara and Nishino, 2021).

A mouse model mimicking the expression of compound heterozygous mutations was generated by introducing a point mutation leading to expression of the T4706M mutation in one RYR1 allele and a 16-bp frame-shift deletion resulting in a premature stop codon in the second allele (*Ryr1*<sup>TM/Indel</sup>; Brennan

et al., 2019). These mice show a reduction of ~80% in RYR1 protein levels and present with muscle weakness, hindlimb paralysis, and severe scoliosis but no changes in fiber type and no evidence of cores. Mice have a short lifespan and die probably because of respiratory failure.

A second mouse model carrying a frameshift mutation (Q1970fsX16) together with the missense mutation A4329D (*Ryr*<sup>Q1970fsX16/A4329D</sup>) shows the main features of MmD-affected patients, with a reduction in muscle force and Ca<sup>2+</sup> transients, associated with a decrease in RYR1 protein level of ~65% (Elbaz et al., 2019). Interestingly, homozygous expression of the A4329D mutation (*Ryr*<sup>A4329D</sup>) also shows a reduction in RYR1 protein content and muscle performance, but this was limited to slow-twitch muscle fibers. The reason for the selective effect of the homozygous A4329D mutation in slow-twitch fibers is not known; the authors suggested that a different epigenetic regulation of fast- versus slow-twitch muscle fibers may account, at least in part, for these differences (Elbaz et al., 2020). Indeed, an increase in histone deacetylase (HDAC) was observed in soleus muscle of *Ryr*<sup>A4329D</sup> mice and, interestingly, in muscles from patients carrying recessive RYR1 mutations (Zhou et al., 2006; Rokach et al., 2015; Ruiz et al., 2022). Although the correlation between expression of mutant RYR1 channels and epigenetic changes is not clear, the use of an inhibitor of HDAC and DNA methylase significantly improved muscle strength and RYR1 expression (Ruiz et al., 2022).

Finally, a third mouse model with an inducible muscle-specific deletion of one RYR1 allele, leading to a 50% reduction in protein expression levels, showed typical signs of a myopathy with features of CCD and DuCD, progressive muscle weakness, atrophy, and mitochondrial dysfunction (Pelletier et al., 2020). This model is particularly interesting since, unlike the previously described models, it was obtained by exclusive reduction in the expression of the *Ryr*1 gene, thus excluding the existence of possible side effects due to the residual expression of mutant *Ryr*1 channels. In these mice, the reduction in *Ryr*1 protein content was sufficient to cause muscle weakness and alterations in E-C coupling. A disorganization of muscle structure was observed, with appearance of lesions resembling those observed in patients with recessive mutations, including mitochondria mislocalization and inhibition of autophagy. Interestingly, an increase in *Stim1* and *Orail* was also observed, suggesting a possible role of SOCE in disease onset (Pelletier et al., 2020).

### RYR1-related myopathies

RYR1-related myopathies are classified in different subtypes mostly based on the histopathological features observed in muscle biopsies of patients (Abath Neto et al., 2017; Garibaldi et al., 2019; Knuiman et al., 2019; Lawal et al., 2020; Table 1). Nevertheless, it must be considered that the histological phenotype associated with RYR1 mutations can differ in individuals with the same variant or change with age in the same patient, and thus classification of RYR1-related myopathies merely based on the histopathological pattern is more complicated than expected. In addition, MH, a nonmyopathic condition, is also strictly linked to RYR1 mutations (Galli et al., 2006).

### CCD

Core myopathies represent a heterogeneous group of muscle diseases that can differ clinically, pathologically, and genetically; at histological examination, they share a common pathological feature consisting of areas of muscle fibers, called cores, that do not show oxidative enzyme staining because of a reduced number of mitochondria or decreased oxidative enzyme activity. Accordingly, CCD is characterized, at the histopathological level, by centrally located and well-demarcated cores, presenting with reduced oxidative activity, running almost along the entire axis of the fibers, and mostly present in type 1 fibers (Jungbluth, 2007; Jungbluth et al., 2018; Lawal et al., 2020). Cores can be classified as structured or unstructured based on ATPase activity levels and myofibrillar disruption. Additional histopathological features of CCD include increased central nuclei, endomysial fibrosis, and proliferation of sarcotubular membranes (Garibaldi et al., 2019; Lawal et al., 2020). These cores may also contain structural proteins such as desmin,  $\alpha\beta$ -crystallin, or SR proteins such as RYR1, triadin, and DHPR (Ogasawara et al., 2020). CCD is the most frequent core myopathy, and RYR1 mutations are found in >90% of patients (Wu et al., 2006; Jungbluth et al., 2018; Lawal et al., 2020).

Although in RYR1-related myopathies little or no correlation can be found between the clinical phenotype and localization of mutations in the RYR1 channel, mutations in patients with CCD are more frequently localized in the C-terminal region, containing the pore-forming domain of the channel (Wu et al., 2006). CCD can be inherited with a dominant or recessive transmission. CCD due to dominant RYR1 mutations is the most frequent and is usually associated with a mild condition compared with the more severe cases due to recessive inheritance. Clinically, CCD has a typical onset in infancy or early childhood; patients show nonprogressive hypotonia and motor development delay, congenital dislocation of the hips, scoliosis, myalgia, and muscle stiffness; respiratory, bulbar, and cardiac involvement are less common (Bönneman et al., 2014; Lawal et al., 2018; Jungbluth et al., 2018). Serum creatine kinase levels may be moderately elevated or normal (Klein et al., 2011). CCD due to recessively inherited RYR1 mutations presents more severe features such as marked hypotonia, multiple arthrogryposis, and respiratory failure (Bharucha-Goebel et al., 2013). Some, but not all, CCD patients carrying dominant RYR1 mutations may have an increased risk for MH (Rosenberg et al., 2015). On the other hand, RYR1 mutations found in patients with CCD may be present in individuals with MH susceptibility but no sign of myopathy.

As previously discussed, CCD is associated with both gain of function and loss of function. To unravel the pathogenic mechanisms of core formation due to such functionally different RYR1 mutations, three mouse models of CCD have been generated in the last 15 yr, *Ryr*<sup>R163C</sup>, *Ryr*<sup>Y522S</sup>, and *Ryr*<sup>I4898T</sup> mouse models (Chelu et al., 2006; Yang et al., 2006; Zvaritch et al., 2007; Loy et al., 2011; Lee et al., 2017). A model for core formation in CCD murine models proposes that persistent Ca<sup>2+</sup> leak from *Ryr*1 mutant channels induces a chronic condition of ROS/RNS stress, leading to mitochondrial damage, disruption of the sarcotubular system, and thus core formation. These pathogenic mechanisms

Table 1. Diagnostic cues, histological traits, and genes associated with main subtypes of E-C coupling and SOCE-related myopathies

E-C coupling-related myopathies	Main clinical features	Fiber phenotype	Causative genes	Inheritance	Mechanism (RyR1 channel)
CCD	<ul style="list-style-type: none"> <li>✓ Infantile nonprogressive hypotonia and motor development delay</li> <li>✓ Mild proximal muscle weakness</li> <li>✓ Respiratory distress</li> <li>✓ High arched palate</li> <li>✓ Craniofacial dysmorphism</li> </ul>	<ul style="list-style-type: none"> <li>✓ Centrally located, well-demarcated cores, spanning the whole fiber axis</li> <li>✓ Predominance in type 1 fibers</li> <li>✓ Increased central nuclei</li> </ul>	<i>RYR1</i> >90%	AD or AR	GoF, LoF
			<i>MYH7</i>	AD	Altered assembly and function of myosin dimers
MmD	<ul style="list-style-type: none"> <li>✓ Axial muscle weakness, scoliosis, respiratory insufficiency, and limb joint hyperlaxity</li> <li>✓ Ophthalmoplegia</li> <li>✓ Arthrogryposis</li> <li>✓ Hand amyotrophy</li> </ul>	<ul style="list-style-type: none"> <li>✓ Numerous cores in a limited area on longitudinal section</li> <li>✓ Multiple internally located nuclei</li> <li>✓ Predominance in type 1 fibers</li> </ul>	<i>RYR1</i> ~20% (homozygosity or compound heterozygosity)	AR	GoF, LoF, lower protein levels
			<i>SEPN1</i> ~50%	AR	Altered redox activity
			<i>TTN</i> (homozygosity or compound heterozygosity)	AR	M-line alteration
			<i>MYH7</i>	AD	Not defined
			<i>ACTA1</i>	AR	Not defined
			<i>MEGF10</i>	AD or AR	Not defined
			<i>CACNA1S</i>	AD	Lower protein levels
CNM	<ul style="list-style-type: none"> <li>✓ Not progressive proximal muscle weakness</li> <li>✓ Not progressive hypotonia</li> </ul>	<ul style="list-style-type: none"> <li>✓ Centralized and internalized nuclei</li> <li>✓ Peripheral halos depleted of oxidative activity</li> <li>✓ Cores</li> </ul>	<i>RYR1</i> ~15% (compound heterozygosity)	AR	Lower protein levels
			<i>MTM1</i>	XLR	Altered vesicle trafficking
			<i>DNM2</i>	AD	Altered membrane fission
			<i>BIN1</i>	AD	Altered membrane tubulation
			<i>TTN</i>	AR	M-line alterations
			<i>SPEG</i>	AR	Altered interaction with MTM1 and desmin
CFTD	<ul style="list-style-type: none"> <li>✓ Static or slowly progressive muscle weakness</li> <li>✓ Respiratory and proximal axial weakness</li> <li>✓ Ophthalmoplegia</li> <li>✓ Dysphagia</li> <li>✓ Facial muscle weakness</li> </ul>	<ul style="list-style-type: none"> <li>✓ Fiber size disproportion (35–40% of type 1 fibers are smaller in size than type 2 fibers)</li> <li>✓ Age-related development of rods, cores, and central nuclei</li> </ul>	<i>RYR1</i> ~20%	AR	Lower protein levels
			<i>ACTA1</i>	AD	Altered interaction with TPM
			<i>TPM2</i>	AD or AR	Altered interaction with actin
			<i>TPM3</i>	AD or AR	Altered interaction with actin
			<i>SEPN1</i>	AR	Altered redox activity
			<i>MYH7</i>	AD	LoF, altered interaction with myosin binding protein
			<i>LMNA</i>	AD	Not defined
			<i>ZAK</i>	AR	LoF
			<i>SPEG</i>	AR	LoF
DuCD	<ul style="list-style-type: none"> <li>✓ Ocular involvement (eyelid ptosis, ophthalmoplegia)</li> </ul>	<ul style="list-style-type: none"> <li>✓ Irregularly sized/shaped “dusty” cores (reddish-purple granular material deposition) spanning 10–50 sarcomeres</li> <li>✓ Myofibrillar disorganization</li> </ul>	<i>RYR1</i>	AR	Lower protein levels

Table 1. Diagnostic cues, histological traits, and genes associated with main subtypes of E-C coupling and SOCE-related myopathies (Continued)

E-C coupling-related myopathies	Main clinical features	Fiber phenotype	Causative genes	Inheritance	Mechanism (RyR1 channel)
CRM	✓ Nonspecific clinical features, including hypotonia, muscle weakness, scoliosis, and respiratory insufficiency	✓ Nemaline bodies (rods), clustered or widely distributed along the fibers ✓ Central cores	<i>RYR1</i>	AD or AR	GoF, LoF
			<i>CFL2</i>	AR	Protein misfolding and degradation
			<i>ACTA1</i>	AD	Altered stability or function
			<i>TPM3</i>	AD or AR	Not defined
			<i>NEB</i>	AR	Not defined
MH	✓ Muscle rigidity and cardiac arrhythmia, occurring only following exposure to succinylcholine and volatile anesthetics ✓ Sustained contractures, ✓ Hyperthermia ✓ Hyperkalemia ✓ Hypermetabolism	✓ No histological features can be found in muscle fibers from MH patients	<i>RYR1</i>	AD	GoF
			<i>CACNA1S</i>	AD	GoF
SOCE-related myopathies					
TAM/Stormorken syndrome	✓ Muscle weakness ✓ Myalgia ✓ Cramps ✓ Increased creatine kinase levels ✓ Exercise intolerance	✓ Single- or double-walled SR tubules arranged as honeycomb-like structures in type 2 fibers ✓ Prevalence of type 1 fibers	<i>STIM1</i>	AD	GoF
			<i>ORAI</i>	AD	GoF
			<i>CASQ1</i>	AD	Altered polymerization
			<i>RYR1</i>	AD	GoF

Proteins encoded by the indicated genes and relative references are reported in the text. AD, autosomal dominant; AR, autosomal recessive; GoF, gain-of-function; LoF, loss-of-function; XLR, X-linked recessive.

are further exacerbated by the activation of futile cycles powered by ROS/RNS-dependent RyR1 hyperactivation and increased SOCE to compensate for  $Ca^{2+}$  leak. As concerns core formation in *RyR1*<sup>L4898T</sup> mice carrying a *RYR1* uncoupling mutation, it is clear that core formation is unlikely to be due to increased intracellular  $Ca^{2+}$ . Studies by Lee et al. (2017) proposed that this *RYR1* mutation induces a chronic condition of ER stress/UPR that results in a decrease in protein synthesis and an increase in mitochondrial  $Ca^{2+}$  uptake, ROS production, and induction of apoptosis. According to these models, it can therefore be hypothesized that, although the primary trigger is different, core formation in CCD, due to gain-of-function or loss-of-function mutations in *RYR1*, can represent the final outcome of the stressful conditions that converge into alterations in activity and/or structure of mitochondria and disruption of SR and myofibrils.

Dominant mutations in the *MYH7* gene, which encodes the slow/ $\beta$ -cardiac myosin heavy chain (MyHC1) expressed in type 1 muscle fibers and in the heart, are causative of ~10% of CCD cases (Fanapazir et al., 1993; Romero et al., 2014), as well as of several other myopathies including MmD and CFTD (Tajsharghi et al., 2003; Cullup et al., 2012; Clarke et al., 2013). *MYH7* mutations in skeletal myopathies are usually located in the rod domain of the protein (Tajsharghi and Oldfors, 2013; Fiorillo et al., 2016). Although the pathogenic mechanisms associated with mutation in *MYH7* are still unclear, mutations in the rod region can affect assembly of functional myosin dimers or their incorporation into thick filaments, causing aberrant

accumulation of myosin as in myosin storage myopathy (Tajsharghi and Oldfors, 2013).

### MmD

Recessive mutations in *RYR1* represent the second genetic cause of MmD, a myopathy presenting numerous cores, visible as pale spots in oxidative stained muscle sections, sometimes with a moth-eaten appearance and gathered in a limited area on longitudinal section. Multiple internally located nuclei, minimal myofibril disruption, and type 1 fiber predominance are noted in affected muscles, although the histological traits can be extremely variable (Lawal et al., 2018; Ogasawara and Nishino, 2021). Clinical features of MmD are variable and can be classified in four groups: (1) the classic form, with axial muscle weakness, scoliosis, respiratory insufficiency, and limb joint hyperlaxity; (2) the ophthalmoplegia form; (3) the early-onset form with arthrogryposis, and (4) a slowly progressive form with hand amyotrophy (Jungbluth et al., 2005; Jungbluth, 2007; Monnier et al., 2008; Treves et al., 2008; Klein et al., 2012; Romero and Clarke, 2013). MmD patients carrying mutations in *RYR1* typically present with extraocular muscle involvement and ophthalmoplegia, symptoms not observed in patients with mutations in *SEPNI*, which are present in the majority of MmD cases (Villar-Quiles et al., 2020). *SEPNI* codes for selenoprotein N, an SR protein with  $Ca^{2+}$ -dependent redox activity (Ferreiro et al., 2002; Petit et al., 2003; Chernorudskiy et al., 2020; Villar-Quiles et al., 2020). The pathogenic mechanisms of *RYR1*-related



MmD are variable, including both loss-of-function and gain-of-function mutations, as well as reduction in RYR1 protein content (Jungbluth, 2007).

More rarely, patients with MmD may carry mutations in *TTN*, *MYH7*, *ACTA1*, *MEGF10*, and *CACNA1S*. Homozygous and compound heterozygous mutations in the *TTN* gene, which codes for titin, a giant sarcomeric protein, are found in patients with MmD (Chauveau et al., 2014). These mutations are preferentially found in the region of *TTN* coding for the M-line segment of this protein (Chauveau et al., 2014; Ávila-Polo et al., 2018). Mutations in *ACTA1*, which codes for skeletal muscle  $\alpha$ -actin, the principal isoform found in the adult sarcomeres, are rarely found in patients with MmD as well as several other myopathies (Sparrow et al., 2003). The pathogenic mechanisms of disease remain to be identified. The *MEGF10* gene encodes the multiple EGF-like domain 10 protein, a transmembrane receptor belonging to the multiple epidermal growth factor-like domains family, that is upregulated in activated satellite cells and regulates the progression of the myogenic program (Holterman et al., 2007). Mutations in *MEGF10* have been detected in a few cases of MmD (Boyden et al., 2012; Liewluck et al., 2016; Takayama et al., 2016; AlMuhaizea et al., 2021). The *CACNA1S* gene encodes Cav1.1, the pore-forming subunit of the skeletal muscle voltage-gated  $\text{Ca}^{2+}$  channel (DHPR). Recessive and dominant mutations in *CACNA1S* were identified in patients showing MmD/CNM with structural alterations in T-tubules and SR. Although the pathogenetic mechanism has not been clearly defined, both recessive and dominant mutations correlate with a strong decrease in protein levels, suggesting instability or degradation of DHPR complexes. RYR1-mediated  $\text{Ca}^{2+}$  release was also impaired, although no change in cytosolic or SR  $\text{Ca}^{2+}$  levels was observed (Schartner et al., 2017).

### CNM

Recessive mutations in *RYR1* are the most common cause of autosomal recessive CNM, accounting for ~15% of patients. At clinical presentation, autosomal CNM most frequently shows delayed motor milestones, nonprogressive muscle weakness and hypotonia, ptosis, ophthalmoplegia, and mild to severe respiratory impairment (Jungbluth et al., 2008; Wilmschurst et al., 2010; Bevilacqua et al., 2011; Romero and Bitoun, 2011; Gómez-Oca et al., 2021). From a histological point of view, CNM shows centralized and internalized nuclei, peripheral halos depleted of oxidative activity, and cores, although based on which gene is mutated, the histological patterns may vary (Nicot et al., 2007; Bevilacqua et al., 2011; Gomez-Oca et al., 2021). *RYR1*-related CNM often presents as a mixed phenotype between CNM and core myopathies, with the presence of multiple central nuclei and core-like structures with no limited boundaries (Abath Neto et al., 2017). These forms are normally caused by compound heterozygous mutations in *RYR1*, where one of the two mutations usually cause premature termination of the transcript, resulting in a decrease in *RYR1* protein expression levels (Gómez-Oca et al., 2021). Mutations in *MTM1* account for >50% of CNM cases. This gene encodes the 3'-phosphoinositide phosphatase myotubularin (Hnia et al., 2012; Vandersmissen et al., 2018). Mutations in the gene encoding Dynamin 2 (*DNM2*)

are the most common cause of dominant CNM. *DNM2* is a GTPase protein that can bind and organize the microtubular and actin cytoskeleton and associates with nascent vesicles to induce their release (Ferguson and De Camilli, 2012). More rare cases of CNM are due to mutations in *BIN1*, which encodes amphiphysin 2, a protein implicated in membrane curvature, tubulation, and vesicle trafficking (Peter et al., 2004). *MTM1*, *BIN1*, and *DNM2* encoded proteins are functionally interconnected, since they are involved in vesicle trafficking, membrane fission, or autophagy (Durieux et al., 2012). *MTM1* recruits *BIN1* and *DNM2* to muscle membranes and enhances *BIN1* tubulation. Mutations in *MTM1* affect triad structure (Royer et al., 2013; Cowling et al., 2017). Given the functional interplay between *BIN1*, *DNM2*, and *MTM1*, a correct balance in their reciprocal expression levels has been shown to be important for muscle physiology. Indeed, overexpression of *BIN1* in *Dnm2*<sup>R465W/WT</sup> and *Dnm2*<sup>R465W/R465W</sup> mice improved muscle atrophy and rescued the perinatal lethality and survival of *Dnm2*<sup>R465W/R465W</sup> mice (Lionello et al., 2022). Moreover, the use of antisense oligonucleotides against *Dnm2* in *Bin1* knockout mice improved muscle force and intracellular architecture (Silva-Rojas et al., 2022). Recently, the role of a microRNA identified within the genomic sequence of *DNM2*, namely miR-199a-1, was also investigated as a player in the development of CNM (Chen et al., 2020). Recessive *TTN* mutations result in a variable histological pattern, from cores to typical minicores with a marked type 1 fiber predominance. Multiple centrally located nuclei are also present in a significant proportion, thus accounting for the diagnosis of CNM (Ceyhan-Birsoy et al., 2013). Recessive mutations in the *SPEG* gene, which encodes the striated muscle enriched protein kinase, a serine/threonine kinase member of the myosin light chain kinases involved in muscle development (Luo et al., 2021), were identified in patients with severe pediatric forms of CNM with cardiac involvement (Agrawal et al., 2014; Wang et al., 2017; Tang et al., 2020).

### CFTD

CFTD diagnosis is based on the observation that 35–40% of type 1 fibers show a smaller size than type 2 fibers, without other structural defects (Clarke, 2011). However, many patients with age may develop rods, cores, and central nuclei (Garibaldi et al., 2019; Lawal et al., 2020). Recessive mutations in *RYR1* are found in ~20% of CFTD patients, while another 40% of cases are associated with mutations in different genes including *ACTA1*, *TPM3*, *TPM2*, *SEPNI*, *MYH7*, *LMNA*, and *ZAK*; the remaining 40% of CFTD cases have not yet been associated with a genetic cause (Laing et al., 2004; Laing et al., 2009; Lawlor et al., 2010; Ortolano et al., 2011; Kajino et al., 2014; Vasli et al., 2017; Moreno et al., 2020). Clinically, the disease shows static or slowly progressive generalized muscle weakness from infancy as well as respiratory and proximal axial muscle weakness, multiple joint contractures, scoliosis, long thin face, and high arched palate. About 30% of patients also show respiratory involvement. Other common features are ophthalmoplegia, dysphagia, and facial muscle weakness (Clarke, 2011; Lawal et al., 2020). Mutations in *ACTA1* account for ~10% of CFTD cases, are often localized on the

surface of ACTA1, and correspond to amino acids that are exposed on the F-actin filament facing the sites of interaction with tropomyosin, suggesting that the mechanism of disease may correlate with disruption or alteration of the actin-tropomyosin interaction (Laing et al., 2004; Laing et al., 2009; Matsumoto et al., 2022). Cardiomyopathy is a rare finding accompanying CFTD with ACTA1 mutation (Laing et al., 2009; Matsumoto et al., 2022). *Tropomyosin 2* (TPM2) and TPM3 encode two isoforms of tropomyosin expressed in skeletal muscles. TPM2 codes for  $\beta$ -tropomyosin expressed in type 1 muscle fibers and to a lesser extent in fast-twitch fibers, while TPM3 codes for slow  $\alpha$ -tropomyosin expressed exclusively in slow-twitch fiber types (Marttila et al., 2014). Dominant mutations in TPM2 and TPM3 are more frequently associated with CFTD, while recessive mutations are rare (Lawlor et al., 2010; Clarke, 2011; Moreno et al., 2020). Most TPM2 mutations are localized in the coiled-coil domain of the protein; the R133W mutation in TPM2 alters tropomyosin flexibility and disrupts the actin-tropomyosin and actin-myosin interactions (Borovikov et al., 2020). In contrast, mutations in TPM3 are mainly localized in the actin-binding domain of the protein, resulting in either hyper- or hypocontractility (Yuen et al., 2015).

The LMNA gene codes for lamin A and C proteins, structural components of the nuclear lamina, a network underlying the inner nuclear membrane (Fisher et al., 1986). A dominant mutation in LMNA was identified in patients with CFTD who show muscle weakness, hypotonia, and cardiac involvement (Kajino et al., 2014). Mutations in MYH7 were rarely identified in CFTD. A frameshift mutation was proposed to disrupt the stability of the myosin rod domain and introduce a proline residue that may alter chain flexibility and dimerization. Other distal mutations in MYH7 were also identified in a myopathy with predominance of small type I fibers (Muelas et al., 2010; Ortolano et al., 2011; Clarke et al., 2013; Pajusalo et al., 2016). Patients with recessive mutations in the ZAK gene, encoding the mitogen-activated protein kinase ZAK, were identified in three unrelated families diagnosed with CFTD who presented with slowly progressive muscle weakness, developmental delay, and scoliosis (Vasli et al., 2017). All mutations resulted in loss of protein expression due to the presence of premature stop codons in the mRNA. ZAK is a serine-threonine kinase activating the ERK, JNK, and p38 pathways, that, among other functions, regulates myogenesis (Gotoh et al., 2001). Recently, a homozygous mutation in the C-terminal region of SPEG has been described in patients with a mild form of CFTD with severe cardiac involvement, but in whom hypotrophic type I fibers were not observed. The mutation results in the appearance of a premature stop codon in the C-terminal region of SPEG. This mutation does not affect the domain of interaction with MTM1, however, and this may partially explain the mild phenotype of patients (Gurgel-Giannetti et al., 2021).

### DuCD

DuCD is defined by irregular areas of myofibrillar disorganization with reddish-purple granular material depositions, devoid of ATPase activity (Bevilacqua et al., 2011). Dusty cores are irregular in size and shape, with no demarked borders, sometime

with a star-like appearance (Garibaldi et al., 2019). Unlike CCD, dusty cores are mostly 10–50 sarcomeres in length, with strands of osmophilic material accumulated in specific regions and containing SR or cytoplasmic structures. Patients with DuCD show early disease onset and severe clinical phenotype, with ocular involvement in most of the cases. DuCD is caused by recessive, biallelic RYR1 mutations, resulting in low levels of RYR1 expression. It has been speculated that severe RYR1 haploinsufficiency may impair integrity of triads, which are often duplicated in patients' biopsies (Garibaldi et al., 2019).

### CRM

As its name suggests, muscles from patients affected by CRM show both central cores and nemaline bodies (rods) that are typical of nemaline myopathy. Rods are mainly composed of actin and  $\alpha$ -actinin, probably deriving from Z disks; they can be assembled in clusters or widely distributed along the fibers (Scacheri et al., 2000). Longitudinal sections may also show cores devoid of mitochondria covering a large part of the fiber axis. From a clinical point of view, nonspecific clinical features such as hypotonia, muscle weakness, scoliosis, and respiratory insufficiency are observed. Dominant mutations in RYR1 are the main genetic cause of CRM (Monnier et al., 2000; von der Hagen et al., 2008; Hernandez-Lain et al., 2011). Compound heterozygous mutations in RYR1 were identified in a patient with fetal akinesia, hypotonia, ophthalmoplegia, and respiratory insufficiency (Kondo et al., 2012).

Other causative genes in CRM have been reported (CFL2, ACTA1, and TPM3), although some of them are typically associated with nemaline myopathy, where cores are not present (Agrawal et al., 2007; Lawal et al., 2018; Pinto et al., 2019). Mutations in cofilin 2 (CFL2), coding for the actin-binding protein cofilin-2, were identified in patients with nemaline myopathy with minicores and concentric laminated bodies (Agrawal et al., 2007). Dominant mutations in ACTA1 and TPM3 are most frequently associated with nemaline myopathy characterized by early onset and respiratory insufficiency, while recessive forms of nemaline myopathy are most frequently associated with mutations in the nebulin gene (NEB). Mutations in ACTA1 are distributed along the entire gene, affecting stability, function, and conformation of the protein, so a clear correlation with genetic defect and disease onset and development is difficult to discern (Sparrow et al., 2003). Finally, a compound heterozygous mutation in RYR3 coding for the second isoform of RYR expressed in skeletal muscle was identified in a family with nemaline myopathy. Unfortunately, RYR3 mutant channels were not characterized from a functional point of view, and thus no pathogenetic mechanism can be hypothesized (Nilipour et al., 2018).

### MH

MH is a pharmacogenetic disorder that results in a hypermetabolic state following exposure to succinylcholine and volatile anesthetics such as halothane, sevoflurane, desflurane, and isoflurane. These may cause a massive  $\text{Ca}^{2+}$  release in skeletal muscles, resulting in variable clinical manifestations that can be graded based on symptoms (Larach et al., 1994; Larach et al., 2010). This condition is potentially lethal if not rapidly treated

with the muscle relaxant dantrolene (Hopkins, 2011; Ellinas and Albrecht, 2020). The incidence of MH is estimated at ~1:100,000 individuals, although the number of people carrying mutations in *RYR1* may be estimated at ~1:2,000–3,000 (Monnier et al., 2001; Riaz et al., 2018).

MH appears to have a higher prevalence in males than females, likely because of smaller muscle mass and a protective effect of estrogens in the latter (Michelucci et al., 2017b). Although ~10% of patients present with no alteration at histological analysis, the remaining 90% show a variable range of alterations, including an increase in fiber size variability, internal nuclei, type 1 fiber predominance, and loss of oxidative stain that is rarely associated with the presence of cores and rods (Knuiman et al., 2019). These histological alterations, although variable, may represent mild features that, in *RYR1*-related myopathies, evolve to more severe histological and structural alterations. The diagnostic test for MH susceptibility is an in vitro contracture test, which determines the contracture threshold for skeletal muscle bundles treated with caffeine and halothane (Allen et al., 1998; Hopkins, 2011; Hopkins et al., 2015). *RYR1* variants account for ~76% of MH events, while only 1% are linked to *CACNA1S* mutations and <1% are linked to mutations in *STAC3* (Johnston et al., 2021). As of today, 48 mutations in *RYR1* and 2 mutations in *CACNA1S* are considered causative for MH according to the EMHG, since they have been characterized at the genetic and functional level (Hopkins et al., 2015). Each of these mutations has been fully characterized at the genetic level, including aspects concerning evolutionary conservation and change in charge, polarity, or structure introduced by the amino acid replacement, cosegregation of the variant with the disease in the families affected, and assessment of the prevalence of the variant in the population. In addition, each mutation has been functionally characterized using one or a combination of test systems including expression of recombinant proteins in muscle or nonmuscle cells or patient-derived myotubes and lymphoblasts (Hopkins et al., 2015). However, hundreds of additional variants in *RYR1* have been identified in genetic studies of MH-susceptible individuals, although functional characterization is not yet available for all (Kushnir et al., 2020). Recently, to help in classifying genetic variants in *RYR1*, a score matrix has been defined based on the identification of pathogenic or benign criteria of the American College of Medical Genetics and Genomics (Johnston et al., 2021).

A small percentage of individuals carrying *RYR1* mutations can experience MH-like episodes independently of anesthesia, a condition also referred to as awake MH, which is characterized by skeletal muscle cramping and rigidity, rhabdomyolysis associated with exertional heat illness (the inability to thermoregulate during physical activity), exertional rhabdomyolysis, emotional stress, fatigue, and viral infection (Tobin et al., 2001; Wappler et al., 2001; Capacchione and Muldoon, 2009; Sambuughin et al., 2009; Groom et al., 2011; Dlamini et al., 2013; Molenaar et al., 2014; Timmins et al., 2015; Sambuughin et al., 2018; Zvaritch et al., 2019; Gardner et al., 2020; Laitano et al., 2020; Kruijt et al., 2022). Although the mechanisms that trigger awake MH have not yet been defined, the correlation with anesthetic-induced MH is supported by studies in animal

models that include pigs carrying the R615C mutation corresponding to the human R614C mutation (Fujii et al., 1991) and mice carrying *RYR1* mutations equivalent to human Y522S or G2434R mutations, which show susceptibility to undergo MH crisis when exposed to environmental stress (Michelucci et al., 2017b; Michelucci et al., 2017c; Lopez et al., 2018). Interestingly, treatment with dantrolene improves muscle symptoms such as cramps, myalgia, and muscle weakness in humans or prevents or reduces awake MH crisis in animal models, further supporting the idea of a correlation between anesthesia-induced MH and awake MH (Timmins et al., 2015; Michelucci et al., 2017c). More recently, a correlation between MH and increased levels of blood glucose was observed in humans and in the R163C mouse model for MH (Altamirano et al., 2019; Tammineni et al., 2020).

Skeletal muscle represents a primary site for insulin-dependent and -independent glucose uptake (DeFronzo 1988; Jessen and Goodyear, 2005). In myofibers, glucose can be used for energy production, if muscle contraction is activated, or stored as glycogen. The mechanism that integrates muscle activity and glucose processing is regulated by changes in intracellular  $Ca^{2+}$ . Along these lines, a chronic elevation of intracellular  $Ca^{2+}$  concentration was reported to correlate with lower expression of the glucose transporter GLUT4 and increased expression of phosphorylated glycogen phosphorylase and glycogen synthase (Park et al., 2009; Tammineni et al., 2020; Uryash et al., 2022). These changes boost glycogen breakdown and reduce glucose uptake, thus promoting insulin resistance and hyperglycemia. Interestingly, treatment with dantrolene improved glucose uptake and tolerance, suggesting that alteration in intracellular  $Ca^{2+}$  plays a central role in MH-associated hyperglycemia (Altamirano et al., 2019; Uryash et al., 2022).

### Other *RYR1*-related myopathies

King-Denborough syndrome (KDS) is characterized by susceptibility to MH, delayed motor development, short stature, cryptorchidism, skeletal abnormalities, and variable dysmorphic features. Resting creatine kinase levels are elevated in some patients, and muscle biopsies show fiber size variation with atrophic type I muscle fibers and absence of cores. KDS can present with either a dominant or a recessive inheritance of mutations in *RYR1* and presents with a high variable penetrance (Isaacs and Badenhorst, 1992; Dowling et al., 2011).

Mutations in *RYR1* have been rarely identified in some other myopathies. For example, three different *RYR1* mutations were identified in calf-predominant distal myopathy, a mild dominant distal myopathy characterized by fatty degeneration of medial gastrocnemius, elevated creatine kinase levels, and the presence of cores in muscle biopsies (Savarese et al., 2020). In contrast to early-onset *RYR1*-related myopathies that affect the medial and anterior thigh compartment, few cases of late-onset axial myopathy have been associated with *RYR1* mutations. These are characterized by paravertebral and posterior thigh involvement (Jungbluth et al., 2009; Løseth et al., 2013). The real incidence of these myopathies is probably largely underestimated, since clinical manifestation typically occurs in old age and can be confused with normal aging dysfunction.



### CACNA1S- and STAC3-related congenital myopathies

CACNA1S mutations are associated with MH and some forms of congenital myopathies (Monnier et al., 1997; Schartner et al., 2017; Mauri et al., 2021). CACNA1S mutations identified in MH affect residues located in the S4 voltage-sensing domain, while those identified in congenital myopathies are associated with a decrease in CACNA1S protein expression and impairment of E-C coupling (Maggi et al., 2021; Brugnoli et al., 2022). More severe cases were reported with fetal akinesia or cognitive delay (Yis et al., 2019; Ravenscroft et al., 2021). Recently, homozygous and compound heterozygous mutations in STAC3 were identified in a rare autosomal recessive congenital myopathy called Native American myopathy, also known as Bailey-Bloch congenital myopathy, a severe myopathy characterized by facial involvement, bone and joint deformities, MH susceptibility, and delayed motor milestones (Horstick et al., 2013; Telegrafi et al., 2017; Grzybowski et al., 2017; Zaharieva et al., 2018). STAC3 encodes a protein that binds Cav1.1 at triads and is essential for E-C coupling (Horstick et al., 2013; Polster et al., 2016; Perni et al., 2017; Rufenach and Van Petegem, 2021).

### SOCE

SOCE is a ubiquitous  $\text{Ca}^{2+}$  signaling pathway that, in all cell types, allows regulated entry of  $\text{Ca}^{2+}$  from the extracellular environment in response to a decrease in ER  $\text{Ca}^{2+}$  content (Putney, 1986). The existence of this mechanism was initially based on the identification of a  $\text{Ca}^{2+}$  current activated by depletion of intracellular  $\text{Ca}^{2+}$  stores called the  $\text{Ca}^{2+}$  release-activated  $\text{Ca}^{2+}$  current ( $I_{\text{CRAC}}$ ; Hoth and Penner, 1992). 10 yr of intense work led to the discovery of the two main proteins capable of sustaining SOCE: STIM1 (Liou et al., 2005; Roos et al., 2005) and ORAI1 (Feske et al., 2006; Vig et al., 2006; Zhang et al., 2006). Current evidence supports a model in which STIM1 and ORAI1, given their ubiquitous pattern of expression, represent the main contributors to SOCE in eukaryotic cells (Lewis, 2020).

STIM1 is a single-pass transmembrane protein on the ER/SR membrane that functions as a sensor of intraluminal  $\text{Ca}^{2+}$  levels. This function is mediated by two noncanonical  $\text{Ca}^{2+}$ -binding EF-hand motifs in the N-terminal intraluminal region of STIM1 that, at resting conditions when intracellular  $\text{Ca}^{2+}$  stores are full, maintain STIM1 in a  $\text{Ca}^{2+}$ -bound dimeric conformation in the ER/SR. ORAI1 is a plasma membrane protein containing four transmembrane helices with both N- and C-terminal regions facing the cytosol (Feske et al., 2006; Vig et al., 2006; Zhang et al., 2006). Six ORAI1 proteins assemble into functional hexameric complexes that form fully functional CRAC channels, allowing  $\text{Ca}^{2+}$  influx from the extracellular environment to refill intracellular stores (Lewis, 2020). The  $I_{\text{CRAC}}$  current undergoes fast and slow  $\text{Ca}^{2+}$ -dependent inactivation (CDI) that, by terminating  $\text{Ca}^{2+}$  entry, prevents the potentially harmful consequences of  $\text{Ca}^{2+}$  overload for cells (Zweifach and Lewis, 1995a; Zweifach and Lewis, 1995b; Lewis, 2020).

After depletion of intracellular  $\text{Ca}^{2+}$  stores, the dissociation of  $\text{Ca}^{2+}$  from STIM1 induces conformational changes resulting in STIM1 adopting a more extended structure and relocating to dedicated ER-plasma membrane junctional sites, where it forms large aggregates. Here, STIM1 binds to phosphoinositide on the

plasma membrane and, through a domain in the cytosolic region termed CRAC-activating domain (CAD) or STIM-ORAI-activating region (SOAR), interacts with ORAI1. The site in ORAI1 that mediates the interaction with STIM may require multiple separate domains, one of which has been recently proposed to correspond to a peptide in the cytoplasmic C-terminal extension that follows the fourth transmembrane helix in each of the six ORAI1 monomers (Baraniak et al., 2021).

After the initial identification of STIM1 and ORAI1, additional studies identified a second member of the STIM family (STIM2) and two additional ORAI1 genes, ORAI2 and ORAI3 (Feske et al., 2006). STIM2 shares significant structural homology with STIM1, and the two proteins can form heterodimers (Berna-Erro et al., 2017). Studies on the  $\text{Ca}^{2+}$  affinities of STIM1 and STIM2 have shown that the latter has a lower affinity for  $\text{Ca}^{2+}$  than STIM1, supporting a model in which STIM2 is more sensitive to changes in the ER luminal  $\text{Ca}^{2+}$  and thus may contribute to activate SOCE at front of minimal decreases in  $\text{Ca}^{2+}$  concentration in the intracellular stores (Brandman et al., 2007; Berna-Erro et al., 2009).

Several isoforms generated by differential splicing of *STIM1* and *STIM2* are expressed in different cells. Three spliced isoforms of *STIM1* have been described that show tissue-specific patterns of expression and different regulatory properties: STIM1L, expressed in skeletal and cardiac muscle and in the brain (Darbellay et al., 2011); STIMB, a neuron-specific isoform (Ramesh et al., 2021); and STIMA, which appears to negatively modulate SOCE (Knapp et al., 2022). Two splice variants of *STIM2* have been identified: STIM 2.1, also called STIM2 $\beta$ , and STIM2.3; the original STIM2 protein is also called STIM2.2 or STIM2 $\alpha$ . STIM 2.1 is strong dominant-negative regulator of SOCE, likely because of a short insert of eight amino acids in the CAD/SOAR region that impairs the association of STIM2.1 with ORAI and the transient receptor potential (TRP) channels. Not much is yet known about the STIM2.3 splice variant, which differs from both STIM2.1 and STIM2.2 in the C-terminal region (Miederer et al., 2015; Rana et al., 2015).

The use of alternative translation initiation sites results in expression of two ORAI1 isoforms, ORAI1 $\alpha$  and ORAI1 $\beta$ . ORAI1 $\alpha$  contains 63 additional amino acids in the N-terminal region, not present in ORAI1 $\beta$  (Desai et al., 2015). As concerns the ORAI channels, while the function of ORAI1 has been intensively studied, much less is known about ORAI2 and ORAI3. ORAI2 and ORAI3 share a significant homology to ORAI1 and, when transfected in cells, form CRAC channels that can be activated by STIM proteins, even if they show some regulatory properties distinct from ORAI1 channels (Emrich et al., 2022). Interestingly, knockout of *Orai2* and *Orai3* in mice and cells has provided evidence that the assembly of heteromeric channels containing ORAI1 with either ORAI2 or ORAI3 results in the negative regulation of ORAI1 (Yoast et al., 2020).

Additional studies have also shown that SOCE, in addition to ORAI1 channels, may occur through the recruitment of additional channels such as the nonselective cation channels of the TRP canonical (TRPC) family (Lee et al., 2010). The contribution of TRPC will result in the activation of a store-operated current



(I<sub>SO</sub>) of divalent and monovalent cations (Lewis, 2020; Emrich et al., 2022).

The existence of two *STIM* and three *Orai* genes and alternative spliced isoforms, some of which have dominant-negative effects on the I<sub>CRAC</sub> current, is strongly suggestive of the importance of fine-tuning SOCE-mediated Ca<sup>2+</sup> signaling to regulate the variety of different functions that operate simultaneously in eukaryotic cells. That SOCE plays signaling functions in addition to refilling the empty Ca<sup>2+</sup> stores is now supported by several studies that link modification of SOCE function with activation of specific transcription factors and signaling pathways, resulting in the regulation several specific cell functions, including regulation of metabolism. Indeed, SOCE has been shown to contribute to activation of T cell proliferation by triggering calcineurin-mediated activation of the NFAT transcription factor and of stimulation of the PI3K-AKT-mTOR pathways, resulting in upregulation of glucose transporters and glycolytic and mitochondrial enzymes that provide the metabolic support necessary for T cell expansion and activation of adaptive immune functions (Vaeth et al., 2017). Studies with *Orai1*- or *Stim1*/*Stim2*-deficient mice revealed a role of SOCE in regulating fatty acid metabolism in liver, skeletal, and cardiac muscle (Maus et al., 2017). A role of SOCE in regulating mitochondria and glycolysis has also been observed in studies using inducible smooth muscle-specific *STIM1* knockout mice (Johnson et al., 2022).

### SOCE regulation, mitochondria, and metabolism

While the mechanisms responsible for SOCE activation are quite well defined, less is known about the mechanisms that terminate CRAC channel activity. Two mechanisms responsible for CDI of CRAC channel activity have been described (Zweifach and Lewis, 1995a; Zweifach and Lewis, 1995b). Fast CDI occurs within tens of milliseconds, and it has been proposed that direct Ca<sup>2+</sup> binding to *Orai* inactivates the channel (Zweifach and Lewis, 1995a); Ca<sup>2+</sup> and Ca<sup>2+</sup>-calmodulin (CaM) binding to *STIM1* (Litjens et al., 2004; Mullins et al., 2009) and *Orai1* have been described to also have a role in fast CDI (Litjens et al., 2004; Srikanth et al., 2010). Interestingly, *Orai1*β has a lower fast inactivation rate than *Orai1*α, suggesting also that the 63-aa insert present in *Orai1*α might be involved in fast inactivation (Parekh, 2017). On the other hand, it has been suggested that a slow, Ca<sup>2+</sup>-dependent conformational change in the *STIM1*/*Orai1* complex due to store refilling or reversible biochemical changes may be responsible for slow CDI (Parekh, 2017).

Mitochondria, although not directly involved in SOCE activation, can attenuate the slow phase of CDI by lowering cytosolic Ca<sup>2+</sup> levels in proximity to activated *Orai* channels by transporting Ca<sup>2+</sup> to the mitochondrial matrix through the mitochondrial calcium uniporter (MCU; Parekh 2008; Mammucari et al., 2018). Indeed, if mitochondria are depolarized, Ca<sup>2+</sup> entry into the mitochondrial matrix is reduced and cytosolic Ca<sup>2+</sup> remains high, resulting in CRAC channel inactivation. Because fast CDI is not affected by mitochondria depolarization, it has been suggested that mitochondria are involved in regulation of slow CDI (Glitsch et al., 2002). Increases in mitochondrial Ca<sup>2+</sup> concentration regulate ATP production by enhancing the synthesis

of NADH and FADH<sub>2</sub> (Rossi et al., 2019b), thus linking ATP production to muscle demand. Moreover, the dynamics of Ca<sup>2+</sup> transport in and out of mitochondria and the effects of Ca<sup>2+</sup> on the enzymes that govern ATP synthesis activate additional mechanisms by which mitochondria can modulate SOCE (Muallem, 2007; Ben-Kasus Nissim et al., 2017; Walters and Usachev, 2022).

More recently, however, the role of mitochondria in regulating SOCE by preventing CDI has been challenged by studies based on knockout and knockdown of the MCU. These studies revealed that, against expectations, deletion of the MCU stimulated an increase in SOCE-mediated Ca<sup>2+</sup> entry, even if CDI of these channels was promoted by MCU deletion (Yoast et al., 2021). Using mathematical simulations, those authors showed that mitochondrial Ca<sup>2+</sup> transport can act on different pathways to finely regulate Ca<sup>2+</sup> homeostasis. Altogether, it appears that the role of mitochondria in regulating SOCE must occur through additional mechanisms other than simply removing Ca<sup>2+</sup> from the cytosol and prolonging SOCE current by delaying inactivation (Yoast et al., 2021).

An additional regulator of SOCE is SARAF, an ER-resident protein that can exert activating and inactivating effects on CRAC channels by interacting with the SOAR domain or the inhibitory domain in *STIM1* (Palty et al., 2012; Dagan and Paltry, 2021; Zomot et al., 2021). Several other proteins interact and regulate SOCE, including *STIMATE* (STIM-activating enhancer; Lopez et al., 2016) and *CASQ1*, the main Ca<sup>2+</sup> buffer of the SR (Shin et al., 2003; Zhang et al., 2016).

### SOCE in skeletal muscle

In recent years, it has become evident that also skeletal muscle fibers depend on SOCE mechanism to replenish SR Ca<sup>2+</sup> reserves (Kurebayashi and Ogawa, 2001; Launikonis and Rios, 2007). In mammalian skeletal muscle, *STIM1* and *STIM2* are expressed together with some of their alternative spliced isoforms. *STIM1L* is a longer splice variant of *STIM1* that, in the C-terminal region, contains an additional 106 amino acids encoding an actin-binding domain that allows *STIM1* to interact with the subcortical actin filaments (Darbellay et al., 2011; Lilliu et al., 2021). This interaction supports the permanent assembly of *STIM1L* clusters in proximity to *Orai1* channels on the plasma membrane. Based on this stable position, *STIM1L* was proposed to be mainly responsible for the faster activation kinetics of SOCE observed in skeletal muscle (Darbellay et al., 2011). Nevertheless, it is not clear if this occurs through *Orai1* activation, since *STIM1L* appears to be less efficient than *STIM1* at activating *Orai1*, while it shows better interaction and functional activation of *TRPC1* and *TRPC4* (Dyrda et al., 2020). Indeed, the expression of *STIM1L* together with *TRPC1* and *TRPC4* has been reported to be required for fusion and differentiation of myoblasts, and biophysical studies demonstrated that all three proteins are required for optimal SOCE kinetics in myotubes (Antigny et al., 2017; Dyrda et al., 2020). *STIM2.1*, an alternatively spliced isoform of *STIM2*, is also expressed in skeletal muscle. The *STIM2.1* isoform can assemble with other *STIM* isoforms, resulting in heterodimers that negatively regulate SOCE. The resulting modulation of Ca<sup>2+</sup> homeostasis appears to

stimulate myogenic differentiation by increasing the  $\text{Ca}^{2+}$ -regulated expression of NFAT4 and MEF2C transcription factors (Kim et al., 2019). Accordingly, muscle-specific *Stim1* knockout mice show a reduction in  $\text{Ca}^{2+}$ -dependent signal transduction pathways involved in muscle growth, thus resulting in growth delay and postnatal lethality (Li et al., 2012).

In adult skeletal muscle, SOCE was found to be activated at triads by single action potentials immediately after  $\text{Ca}^{2+}$  was released by RYR1 following activation by DHPs. Detailed studies demonstrated that, despite global SR  $\text{Ca}^{2+}$  content remaining constant during E-C coupling,  $\text{Ca}^{2+}$  concentrations at the j-SR drop significantly; it has been proposed that local, but consistent, reduction in SR  $\text{Ca}^{2+}$  content rapidly activates SOCE well before global SR  $\text{Ca}^{2+}$  depletion (Launikonis et al., 2009; Koenig et al., 2018; Pearce et al., 2022). Studies on SOCE in skeletal muscle have been also extended to its role in maintaining the SR  $\text{Ca}^{2+}$  stores following repetitive stimulation of muscle contraction, and especially after intense prolonged activity (Boncompagni et al., 2017; Michelucci et al., 2018; Michelucci et al., 2019; Michelucci et al., 2020; Lilliu et al., 2020). Interestingly, intense exercise was shown to induce the assembly of new intracellular junctions between T tubules and l-SR, where STIM1 and ORAI1 are colocalized. These newly identified structures, named  $\text{Ca}^{2+}$  entry units (CEUs), are formed by elongations of T tubules that run parallel to the l-SR. CEUs support increased  $\text{Ca}^{2+}$  entry via ORAI1 and contribute to improve fatigue resistance under continued muscle activity (Michelucci et al., 2019; Michelucci et al., 2020). In contrast to studies in which activation of SOCE was observed only at triads (Cully et al., 2017), CEUs appear to connect ORAI1 on the T tubules with STIM1 on the l-SR (Boncompagni et al., 2017; Michelucci et al., 2020), suggesting that  $\text{Ca}^{2+}$  entry may occur at different sites in skeletal muscle fibers. To avoid cytosolic  $\text{Ca}^{2+}$  overload and help preserving energy for muscle contraction and reducing fatigue, STIM1 can be phosphorylated by the 5'AMP-activated kinase (AMPK) during exercise, resulting in a decrease in SOCE, which may avoid cytosolic  $\text{Ca}^{2+}$  overload, help preserve energy for muscle contraction, and reduce fatigue (Nelson et al., 2019).

Evidence of an additional role of STIM1, but not of ORAI1, in skeletal muscle has recently been observed in response to the high energy demand that occurs during exercise. Experiments with inducible knockout of STIM1 showed that the reduction in muscle mass and exercise capacity following STIM1 ablation was due not only to a direct impact on  $\text{Ca}^{2+}$  availability for muscle contraction, but also to alterations in muscle metabolism and increase in ER stress/UPR (Wilson et al., 2022). Because these effects were not observed in *Orail*-deficient mice, they may result from a direct interplay between STIM1 and mitochondria, independent of SOCE. Indeed, STIM1 ablation resulted in an increase in lactate production, mainly due to an increase in glucose use associated with a reduction in the functional activity of  $\text{Ca}^{2+}$ -regulated mitochondrial enzymes such as pyruvate dehydrogenase. In addition, biochemical analysis showed that deletion of STIM1 resulted in the selective dampening of pathways linked to growth, while presumably protein synthesis showed an increase. These apparent opposite findings can be

explained by a model in which skeletal muscle of *Stim1*-knockout mice adapts to moderate ER stress levels by slowing growth and augmenting protein quality control mechanisms, resulting in more protein synthesis and turnover with a lower muscle mass (Wilson et al., 2022).

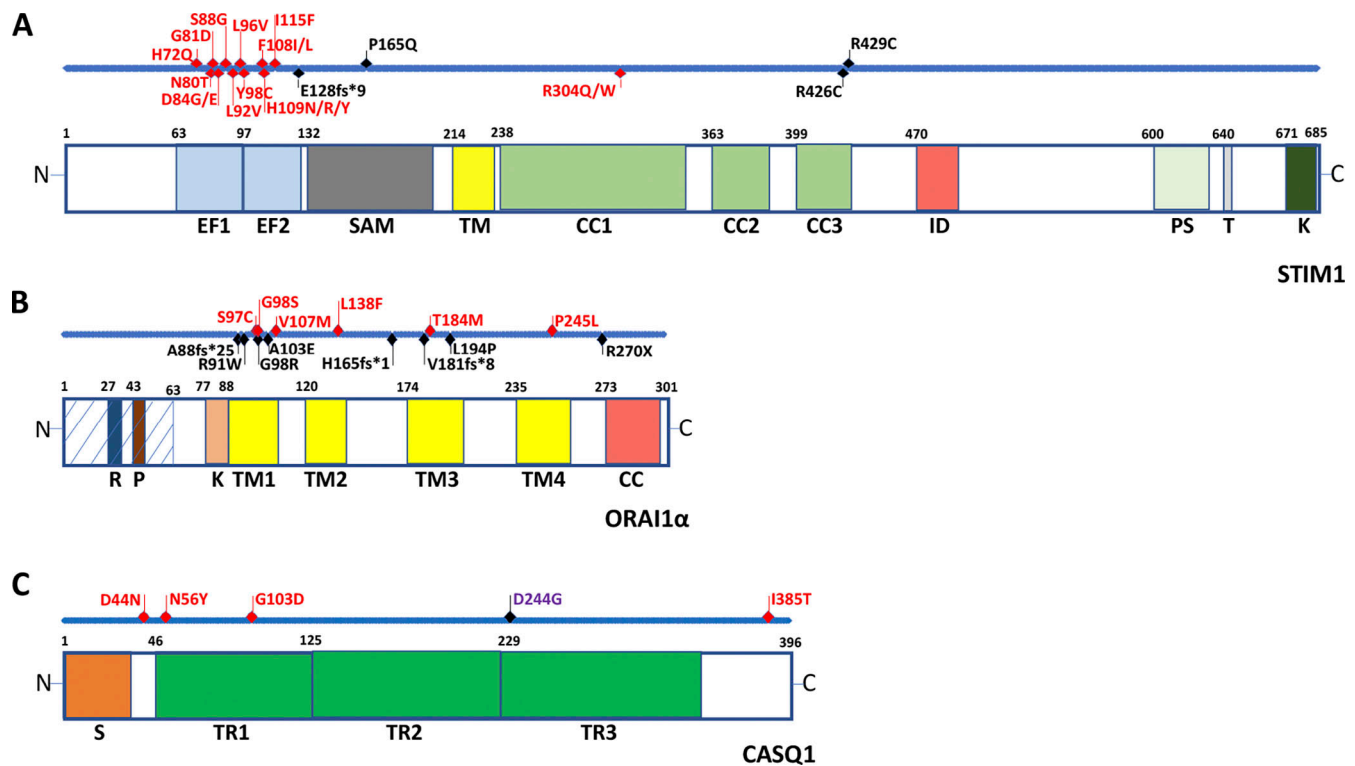
### Altered SOCE mechanism in skeletal muscle fibers and congenital myopathies

Mutations in *ORAI1* and *STIM1* genes can severely affect the SOCE mechanism in different cell types and, consequently, cause a range of human genetic diseases. Patients carrying recessive loss-of function mutations in *STIM1* or *ORAI1* develop a life-threatening immune deficiency, leading to recurrent severe infections accompanied by nonprogressive muscular hypotonia, anhidrotic ectodermal dysplasia, defective dental enamel formation, and mydriasis (McCarl et al., 2009; Fuchs et al., 2012; Wang et al., 2014; Lacruz and Feske, 2015; Silva-Rojas et al., 2020; Conte et al., 2021a).

Recessive loss-of-function mutations in *STIM1* and *ORAI1* genes can result from either frameshift mutations or single missense point mutations that lead to either loss of STIM1 and ORAI1 protein or poorly functional proteins (Fig. 2). As a result, at the functional level, loss-of-function mutations induce a strong reduction or completely abrogate CRAC channel activity, hence the name CRAC channelopathy. Although skeletal muscle is also affected by CRAC channelopathies, the clinically most relevant affected cells are cells of the immune system and especially T lymphocytes (Hoth et al., 2000; Weidinger et al., 2013; Lacruz and Feske, 2015; Silva-Rojas et al., 2020).

Mice knocked out for *Stim1* and *Orail* die around birth (Gwack et al., 2008; Oh-Hora et al., 2008); in contrast, mice with selective skeletal muscle-specific knockout of *Stim1* and *Orail* are viable and fertile. Skeletal muscle-specific *Stim1* and *Orail* knockout mice, however, show reduced muscle mass, reduced muscle contractility and force production, and increased susceptibility to fatigue, which can be explained by alterations in both cytosolic and SR  $\text{Ca}^{2+}$  levels. At the histological and ultrastructural level, muscles revealed a significant reduction in fiber size with appearance of swollen mitochondria (Stiber et al., 2008; Li et al., 2012; Carrell et al., 2016). Muscle-specific conditional *Orail* knockout mice show a more significant reduction in type I fibers in soleus muscles that may be explained by alterations in transition from fast to slow myosin expression during perinatal muscle remodeling (Carrell et al., 2016).

Similar alterations in terms of muscle mass, SR  $\text{Ca}^{2+}$  levels, and resistance to fatigue were also observed in mice carrying the dominant-negative mutation E108Q in ORAI1 (E108Q dn*Orail* mice; Wei-Lapierre et al., 2013). Nevertheless, these mice, unlike *Stim1* and *Orail* knockout mice, are viable and have a normal lifespan; despite a reduction in muscle mass and complete loss of SOCE, they do not show significant myopathic alterations at the histological level. According to those authors, the differences between STIM1 knockout mice and E108Q dn*Orail* mice may be explained by the fact that STIM1 also regulates other intracellular targets such as TRPC, adaptor proteins, ER chaperones, and second messenger enzymes (Wei-Lapierre et al., 2013).



**Figure 2. Schematic representation of STIM1, ORAI1α, and CASQ1 with position of TAM/Stormorken and CRAC channelopathy mutations.** (A–C) Schematic representation of STIM1 (A), ORAI1α (B), and CASQ1 (C) with position of TAM/Stormorken and CRAC channelopathy mutations (depicted in red and in black, respectively) aligned with corresponding protein structural regions. D244G CASQ1 mutation (violet) causes vacuolar aggregate myopathy. The position of the initial aa of each protein domain is indicated. Light blue striped box in the N-terminal portion of ORAI1α indicates the region that is not present in the ORAI1β isoform. For STIM1: CC1/2/3, coiled-coil regions 1/2/3; EF1/2, EF-hand motif 1/2; ID, inhibitory domain; K, lysine-rich region; PS, proline/serine-rich region; S, signal peptide; SAM, sterile α-motif; T, TRIP domain; TM, transmembrane domain; for ORAI1α: CC, coiled-coil domain; P, proline-rich region; R, arginine-rich region; RK, arginine/lysine-rich region; TM 1/2/3/4, transmembrane domain 1/2/3/4; and for CASQ1: S, signal peptide; TR1/2/3, thioredoxin domain 1/2/3.

### Gain-of-function mutations in STIM1 and ORAI1: tubular aggregate myopathy (TAM)/Stormorken syndrome

Gain-of-function mutations that result in constitutive and/or overactivation of SOCE are mainly associated with TAM and Stormorken syndrome (Chevessier et al., 2004; Chevessier et al., 2005; Morin et al., 2020). TAM is a rare genetic disease that selectively affects skeletal muscle. At the clinical level, TAM patients present a range of symptoms that may include muscle weakness, myalgia, cramps, and increased creatine kinase levels and exercise intolerance and can start in infancy and worsen over time, although diagnosis at adult age is also reported. Proximal muscles of lower limbs are predominantly affected, but other skeletal muscles can also be affected (Böhm et al., 2013, 2017; Nesin et al., 2014; Endo et al., 2015; Böhm and Laporte, 2018; Silva-Rojas et al., 2020). Patients with gain-of-function mutations in *STIM1* and *ORAI1* may also present with a rare, severe multisystem disorder, Stormorken syndrome, that shares with TAM the skeletal muscle involvement but, in line with the wide cell and tissue expression patterns of *ORAI1* and *STIM1*, is characterized by a variety of additional symptoms that affect other tissues. As a whole, TAM and Stormorken syndrome are actually considered a clinical continuum of manifestations characterized by muscle weakness, myalgia, and cramps, mostly at the level of the lower limbs, that in some patients may be

accompanied by a variable range of additional symptoms such as miosis, ichthyosis, thrombocytopenia, short stature, and dyslexia (Stormorken et al., 1985; Misceo et al., 2014; Böhm and Laporte, 2018; Silva-Rojas et al., 2020).

At the histological level, muscle biopsies from TAM/Stormorken patients present a prevalence of type I fibers and a characteristic pattern, predominantly found in type 2 fibers, consisting of an accumulation of highly ordered and packed membrane tubules that appear bright red with the modified Gomori trichrome technique and stain positive with periodic acid-Schiff (PAS) and NADH-tetrazolium reductase, but are negative for succinate dehydrogenase or cytochrome c oxidase staining (Chevessier et al., 2005). When visualized by EM, they appear as single- or double-walled tubules arranged as honeycomb-like structures (Salviati et al., 1985; Schiaffino, 2012; Böhm et al., 2013; Chevessier et al., 2005). These tubular aggregates are positive in immunofluorescence for several SR proteins such as CASQ1, SERCA, triadin, RYR1, and STIM1 (Chevessier et al., 2005; Morin et al., 2020; Silva-Rojas et al., 2020). What leads to the development of tubular aggregates is not clear, although they are likely to represent the final stage of a protective mechanism aimed to prevent muscle hypercontraction and damage caused by altered  $\text{Ca}^{2+}$  homeostasis that, by inducing protein misfolding and aggregation, causes



morphological changes in the SR that ends in formation of tubular aggregates (Chevessier et al., 2004; Schiaffino, 2012; Chevessier et al., 2005; Morin et al., 2020).

Several gain-of-function mutations in *STIM1* have been identified, the majority of which affect different amino acids in the canonical and noncanonical EF-hand motifs (Böhm et al., 2013; Böhm and Laporte, 2018; Fahrner et al., 2018; Morin et al., 2020; Silva-Rojas et al., 2020) or the R304 residue in the coiled-coil domain 1 (CC1) of the protein (Misceo et al., 2014; Nesin et al., 2014; Harris et al., 2017; Peche et al., 2020). In the  $\text{Ca}^{2+}$ -bound state of *STIM1*, the canonical and noncanonical EF-hand motifs and the sterile  $\alpha$ -motif domain are tightly packed together (Enomoto et al., 2020). Mutations in the EF-end motifs essentially alter or disrupt  $\text{Ca}^{2+}$  binding, resulting in constitutive active SOCE due to domain unfolding (Böhm et al., 2013; Böhm et al., 2017; Sallinger et al., 2020). As observed in muscle cells from mouse models or in myoblasts from patients carrying these mutations, the mutations induce constitutive *STIM1* clustering, independently of SR  $\text{Ca}^{2+}$  depletion, that results in constitutive activation of SOCE, leading to increased  $\text{Ca}^{2+}$  levels in both the cytosol and the SR (Cordero-Sanchez et al., 2019; Silva-Rojas et al., 2019; Conte et al., 2021b). Studies performed on channels carrying mutations in the noncanonical EF hand motif revealed that constitutive SOCE was also associated with induction of autophagic processes (Sallinger et al., 2020) and mitochondria degeneration (Cordero-Sanchez et al., 2019). Studies on in vitro differentiation of myoblasts from patients carrying the *STIM1* L96V mutation showed that these cells displayed reduced multinucleation and alteration in the mitochondrial network, confirming that SOCE also plays a relevant role during development and differentiation (Conte et al., 2021b).

The R304W mutation in *STIM1* has been extensively studied (Nesin et al., 2014; Fahrner et al., 2018; Rathner et al., 2021; Silva-Rojas et al., 2021). This mutation affects one conserved residue in CC1, unlocking the inhibitory state of *STIM1* and constitutive SOCE activation (Morin et al., 2020). In addition, the R304W mutation suppresses fast CDI of *ORAI*, further enhancing chronic  $\text{Ca}^{2+}$  influx from the extracellular space (Nesin et al., 2014).

Gain-of-function mutations in *ORAI1* were identified in the transmembrane domains. Mutations in M1, M2, and M3 transmembrane domains appear to induce constitutive channel activity, independently of *STIM1* activation (Nesin et al., 2014; Endo et al., 2015; Böhm et al., 2017; Garibaldi et al., 2017; Bulla et al., 2019; Peche et al., 2020), while the *ORAI1* P245L mutation in TM4, identified in a patient with a Stormorken-like syndrome, appears to lengthen the duration of the  $\text{Ca}^{2+}$  entry current, following activation by store depletion, by removing the slow CDI mechanism, while the fast CDI is preserved (Nesin et al., 2014).

Mouse models for gain-of-function mutations in *Stim1* have been generated and found to present with a variable combination of the clinical signs of TAM/Stormorken syndrome in humans. *Stim1*<sup>D84G</sup> mice mainly present with alteration in platelet activation and bleeding (Grosse et al., 2007). *Stim1*<sup>I115F</sup> mice have histological and functional alterations in skeletal muscle tissue and display an increased susceptibility to fatigue. They also

present with hematological defects with thrombocytopenia and altered differentiation in the myeloid lineage and natural killer cells (Cordero-Sanchez et al., 2019). *Stim1*<sup>R304W</sup> mice showed defective skeletal muscle function, thrombocytopenia, spleen alteration, anomalies of the eye and skin, altered bone structure, and dysregulation of immune system (Silva-Rojas et al., 2019). Characterization of skeletal muscle of *Stim1*<sup>R304W</sup> mice revealed evidence of apoptosis, muscle degeneration, and overexpression of ER stress/UPR accompanied by downregulation of RYR1, DHPR, and SERCA1, which could represent a protective mechanism to limit SR  $\text{Ca}^{2+}$  overload (Silva-Rojas et al., 2021). However, none of these mouse models develops defined tubular aggregates, suggesting that additional factors might be required in mice for development of these structures (Gamage et al., 2018; Silva-Rojas et al., 2019).

### Mutations in CASQ1 and RYR1 in patients with mild forms of TAM

Mutations in *STIM1* and *ORAI* are detected in only a fraction of patients diagnosed TAM/Stormorken syndrome (Morin et al., 2020; Silva-Rojas et al., 2020; Conte et al., 2021a). Studies aimed at identifying additional genes causative of TAM/Stormorken syndrome resulted in the identification of three different causative mutations in the *CASQ1* gene in 11 patients with a TAM diagnosis from 6 unrelated families (Barone et al., 2017; Böhm et al., 2018). *CASQ1* is the major  $\text{Ca}^{2+}$ -buffering protein in the SR that, thanks to its ability to bind  $\text{Ca}^{2+}$  with low affinity and high capacity, plays a key role in providing the high  $\text{Ca}^{2+}$  storage capacity of the SR necessary for activation of muscle contraction (Rossi et al., 2021). The ability of *CASQ1* to bind  $\text{Ca}^{2+}$  is closely linked to its ability to polymerize and form long ribbonlike structures that allow  $\text{Ca}^{2+}$  storage within the SR (Park et al., 2003; Sanchez et al., 2012). *CASQ1*, alone or in combination with junctin and triadin, can regulate RYR1 opening and thus contribute to regulation of  $\text{Ca}^{2+}$  release (Beard et al., 2002; Gaburjakova et al., 2013; Manno et al., 2017; Rossi et al., 2021). Accordingly, altered polymerization due to mutations in *CASQ1* may affect channel gating, resulting in leaky RYR1 channels. Initial evidence of a possible regulatory role of *CASQ1* on the SOCE mechanism was provided by experiments based on knockdown of *CASQ1* in muscle fibers that resulted in increased  $\text{Ca}^{2+}$  entry across the sarcolemma (Zhao et al., 2010) and by experiments indicating that *CASQ1* can bind both *STIM1* and *STIM2* and inhibit SOCE (Shin et al., 2003; Wang et al., 2015; Zhang et al., 2016; Jeong et al., 2021). More recently, *Casq1* knockout mice were shown to have an increased expression of *Stim1* and *Orail* associated with enhanced SOCE and preformed CEUs, possibly reflecting a compensatory mechanism to maintain the SR  $\text{Ca}^{2+}$  at levels sufficient to ensure muscle contraction in the absence of *CASQ1* (Michelucci et al., 2020).

At the clinical level, *CASQ1* mutations were detected in patients that reported progressive muscle weakness and exercise-induced myalgia with fatigability predominantly involving the proximal limb muscles. Only one patient reported muscle stiffness. Serum creatine kinase levels were normal in most patients. As expected, given its selective skeletal muscle expression, TAM patients with *CASQ1* mutations presented signs of only a mild



myopathy and, except for one patient who reported ichthyosis, no other symptoms of Stormorken syndrome (Barone et al., 2017; Böhm et al., 2018). All three CASQ1 mutations identified in these TAM patients altered Ca<sup>2+</sup>-dependent polymerization and reduced Ca<sup>2+</sup> storage content when transfected in cells. Two of the mutants were shown to have lost the ability to inhibit SOCE, although one mutant was still able to inhibit Ca<sup>2+</sup> influx (Barone et al., 2017).

A recent study reported the identification of two different missense RYR1 mutations in two unrelated patients with a mild form of myopathy, where the presence of tubular aggregates in muscle fibers was the only alteration observed on histological examination, thus identifying RYR1 as the fourth causative gene in TAM (Vattemi et al., 2022). The two patients came to medical examination reporting symptoms since childhood and early adulthood, respectively. Only one patient reported significant muscle weakness and presented with myopathic changes in four limbs by needle electromyography. Both patients had a history of persistent increase of serum creatine kinase levels (two- to fourfold the normal values). Interestingly, the two patients complained of suffering muscle stiffness after repetitive movements, a symptom not previously associated with TAM, but they did not report symptoms related to Stormorken syndrome. Therefore, considering the quite mild phenotype reported, patients with TAM associated with RYR1 mutations may represent the less severe side of the TAM/Stormorken syndrome. At the functional level, both RYR1 mutations detected in these patients were shown to alter the properties of the RYR1 channels and have been reported as pathogenic and causative for MH susceptibility based on EMHG guidelines (<https://www.emhg.org>). One of the two mutations has been also found in patients with CCD. The identification of mutations in the RYR1 gene in TAM patients is of interest, since RYR1 mutations may represent the genetic cause of myopathy in at least a fraction of the patients affected by TAM that do not carry mutations in STIM1, ORAI1, or CASQ1 and therefore represent a new diagnostic target for these patients. Moreover, since the phenotype of both patients is rather mild, it is possible that RYR1-related TAM may be currently underdiagnosed in the population.

### Concluding remarks

The development of fast and cost-effective DNA sequencing technologies has tremendously increased our knowledge of the genetic basis of skeletal muscle pathologies. This has provided further evidence that mutations in one gene, as in RYR1-related disorders, result in several different myopathies characterized by a spectrum of clinical and histopathological phenotypes. At the same time, as in a mirror image, we have seen an increase in the number of genes that can be associated with the same disease (Jungbluth et al., 2018; Lawal et al., 2018; Garibaldi et al., 2019; Lawal et al., 2020). The recent identification of tubular aggregates, a hallmark of TAM/Stormorken syndrome, in patients carrying RYR1 mutations represents only the latest evidence of how complex it is to associate genetic data and histopathological patterns (Vattemi et al., 2022).

Although it is easy to understand that mutations in RYR1 or CACNAIS can be found in patients with MH or CCD and that

mutations in STIM1 or ORAI1 are associated with TAM/Stormorken syndrome, less obvious are the cases where mutations in genes not involved in Ca<sup>2+</sup>-handling pathways, such as MYH7, TTN, or MEGF10, are detected in patients presenting with clinical symptoms and histopathological alterations like those present in RYR1-related myopathies. This apparent incongruency can be rationalized by evidence that, at least in some cases, mutations in genes apparently not directly connected with Ca<sup>2+</sup> signaling may indirectly affect regulation of Ca<sup>2+</sup> homeostasis, as proposed for SEPNI (Chernorudskiy et al., 2020) or BIN1, MTM1, or DNM2 (Gómez-Oca et al., 2021). However, more work is needed in this direction to explain how genes not known to affect Ca<sup>2+</sup> signaling may induce a myopathy. Future advancements in studying functions, regulatory properties, and even more the network of interactions participated by proteins encoded by causative genes of interest will certainly help answer these questions. In this perspective, a significant contribution can be also provided by the identification of genetic or drug modifiers (Bazrafshan et al., 2021; Volpatti et al., 2020). It can be expected that future investigation will address the identification of the pathogenic pathways activated by different genes, and how these may translate in the development of the different histological findings that characterize these myopathies. A better understanding of these pathogenic mechanisms will improve our knowledge, contribute to the classification of these myopathies, and likely identify novel targets for pharmacological and/or genetic intervention to cure these diseases.

### Acknowledgments

Eduardo Ríos served as editor.

This study was supported by a grant from Fondazione Telethon (grant number GGP19291) to V. Sorrentino.

The authors declare no competing financial interests.

Author's contribution: D. Rossi and V. Sorrentino designed the organization of the manuscript; D. Rossi, M.R. Catallo, E. Pierantozzi, and V. Sorrentino wrote the text; E. Pierantozzi prepared the figures and table; D. Rossi and V. Sorrentino revised the manuscript.

Submitted: 31 January 2022

Revised: 15 July 2022

Accepted: 21 July 2022

### References

- Abath Neto, O., C.A.M. Moreno, E. Malfatti, S. Donkervoort, J. Böhm, J.B. Guimarães, A.R. Foley, P. Mohassel, J. Dastgir, D.X. Bharucha-Goebl, et al. 2017. Common and variable clinical, histological, and imaging findings of recessive RYR1-related centronuclear myopathy patients. *Neuromuscul. Disord.* 27:975–985. <https://doi.org/10.1016/j.nmd.2017.05.016>
- Agrawal, P.B., R.S. Greenleaf, K.K. Tomczak, V.-L. Lehtokari, C. Wallgren-Pettersson, W. Wallefeld, N.G. Laing, B.T. Darras, S.K. Maciver, P.R. Dormitzer, and A.H. Beggs. 2007. Nemaline myopathy with minicores caused by mutation of the CFL2 gene encoding the skeletal muscle actin-binding protein, cofilin-2. *Am. J. Hum. Genet.* 80:162–167. <https://doi.org/10.1086/510402>
- Agrawal, P.B., C.R. Pierson, M. Joshi, X. Liu, G. Ravenscroft, B. Moghadaszadeh, T. Talabere, M. Viola, L.C. Swanson, G. Haliloglu, et al. 2014.

- SPEG interacts with myotubularin, and its deficiency causes centronuclear myopathy with dilated cardiomyopathy. *Am. J. Hum. Genet.* 95:218–226. <https://doi.org/10.1016/j.ajhg.2014.07.004>
- Allen, G.C., M.G. Larach, and A.R. Kunselman. 1998. The sensitivity and specificity of the caffeine-halothane contracture test: A report from the north American malignant hyperthermia registry the north American malignant hyperthermia registry of MHAUS. *Anesthesiology*. 88: 579–588. <https://doi.org/10.1097/0000542-199803000-00006>
- AlMuhaizea, M., O. Dabbagh, H. AlQudairy, A. AlHargan, W. Alotaibi, R. Sami, R. AlOtaibi, M.M. Ali, H. AlHindi, D. Colak, and N. Kaya. 2021. Phenotypic variability of MEGF10 variants causing congenital myopathy: Report of two unrelated patients from a highly consanguineous population. *Genes*. 12:1783. <https://doi.org/10.3390/genes12111783>
- Altamirano, F., S. Riazi, C.A. Ibarra Moreno, N. Kraeva, A. Uryash, P.D. Allen, J.A. Adams, and J.R. Lopez. 2019. Is malignant hyperthermia associated with hyperglycaemia? *Br. J. Anaesth.* 122:e3–e5. <https://doi.org/10.1016/j.bja.2018.09.014>
- Antigny, F., J. Sabourin, S. Saüc, L. Bernheim, S. Koenig, and M. Frieden. 2017. TRPC1 and TRPC4 channels functionally interact with STIM1L to promote myogenesis and maintain fast repetitive  $\text{Ca}^{2+}$  release in human myotubes. *Biochim. Biophys. Acta Mol. Cell Res.* 1864:806–813. <https://doi.org/10.1016/j.bbamer.2017.02.003>
- Avila, G., J.J. O'Brien, and R.T. Dirksen. 2001. Excitation-contraction uncoupling by a human central core disease mutation in the ryanodine receptor. *Proc. Natl. Acad. Sci. USA*. 98:4215–4220. <https://doi.org/10.1073/pnas.071048198>
- Avila, G., K.M.S. O'Connell, and R.T. Dirksen. 2003. The pore region of the skeletal muscle ryanodine receptor is a primary locus for excitation-contraction uncoupling in central core disease. *J. Gen. Physiol.* 121: 277–286. <https://doi.org/10.1085/jgp.200308791>
- Ávila-Polo, R., E. Malfatti, X. Lornage, C. Cheraud, I. Nelson, J. Nectoux, J. Böhm, R. Schneider, C. Hedberg-Oldfors, B. Eymard, et al. 2018. Loss of sarcomeric scaffolding as a common baseline histopathologic lesion in titin-related myopathies. *J. Neuropathol. Exp. Neurol.* 77:1101–1114. <https://doi.org/10.1093/jnen/nly095>
- Bannister, R.A., E. Estève, J.M. Eltit, I.N. Pessah, P.D. Allen, J.R. López, and K.G. Beam. 2010. A malignant hyperthermia-inducing mutation in RYR1 (R163C): Consequent alterations in the functional properties of DHPR channels. *J. Gen. Physiol.* 135:629–640. <https://doi.org/10.1085/jgp.200910329>
- Baraniak, J.H., Y. Zhou, R.M. Nwokonko, M.R. Jennette, S.A. Kazzaz, J.M. Stenson, A.L. Whitsell, Y. Wang, M. Trebak, and D.L. Gill. 2021. Orai channel C-terminal peptides are key modulators of STIM-Orai coupling and calcium signal generation. *Cell Rep.* 35:109322. <https://doi.org/10.1016/j.celrep.2021.109322>
- Barone, V., V. Del Re, A. Gamberucci, V. Polverino, L. Galli, D. Rossi, E. Costanzi, L. Toniolo, G. Berti, A. Malandrini, et al. 2017. Identification and characterization of three novel mutations in the CASQ1 gene in four patients with tubular aggregate myopathy. *Hum. Mutat.* 38:1761–1773. <https://doi.org/10.1002/humu.23338>
- Bazrafshan, S., H. Kushlaf, M. Kakroo, J. Quinlan, R.C. Becker, and S. Sadaayappan. 2021. Genetic modifiers of hereditary neuromuscular disorders and cardiomyopathy. *Cells*. 10:349. <https://doi.org/10.3390/cells10020349>
- Beard, N.A., M.M. Sakowska, A.F. Dulhunty, and D.R. Laver. 2002. Calsequestrin is an inhibitor of skeletal muscle ryanodine receptor calcium release channels. *Biophys. J.* 82:310–320. [https://doi.org/10.1016/S0006-3495\(02\)75396-4](https://doi.org/10.1016/S0006-3495(02)75396-4)
- Beard, N.A., D.R. Laver, and A.F. Dulhunty. 2004. Calsequestrin and the calcium release channel of skeletal and cardiac muscle. *Prog. Biophys. Mol. Biol.* 85:33–69. <https://doi.org/10.1016/j.pbiomolbio.2003.07.001>
- Beard, N.A., and A.F. Dulhunty. 2015. C-terminal residues of skeletal muscle calsequestrin are essential for calcium binding and for skeletal ryanodine receptor inhibition. *Skelet. Muscle*. 5:6. <https://doi.org/10.1186/s13395-015-0029-7>
- Ben-Kasus Nissim, T., X. Zhang, A. Elazar, S. Roy, J.A. Stolwijk, Y. Zhou, R.K. Motiani, M. Gueguinou, N. Hempel, M. Hershinkel, et al. 2017. Mitochondria control store-operated  $\text{Ca}^{2+}$  entry through  $\text{Na}^{+}$  and redox signals. *EMBO J.* 36:797–815. <https://doi.org/10.1525/embj.201592481>
- Berna-Erro, A., A. Braun, R. Kraft, C. Kleinschnitz, M.K. Schuhmann, D. Stegner, T. Wulstsch, J. Eilers, S.G. Meuth, G. Stoll, and B. Nieswandt. 2009. STIM2 regulates capacitive  $\text{Ca}^{2+}$  entry in neurons and plays a key role in hypoxic neuronal cell death. *Sci. Signal.* 2:ra67. <https://doi.org/10.1126/scisignal.2000522>
- Berna-Erro, A., I. Jardin, G.M. Salido, and J.A. Rosado. 2017. Role of STIM2 in cell function and physiopathology. *J. Physiol.* 595:3111–3128. <https://doi.org/10.1113/JP273889>
- Berridge, M.J., P. Lipp, and M.D. Bootman. 2000. The versatility and universality of calcium signalling. *Nat. Rev. Mol. Cell Biol.* 1:11–21. <https://doi.org/10.1038/35036035>
- Bevilacqua, J.A., N. Monnier, M. Bitoun, B. Eymard, A. Ferreiro, S. Monges, F. Lubieniecki, A.L. Taratuto, A. Laquerrière, K.G. Claeys, et al. 2011. Recessive RYR1 mutations cause unusual congenital myopathy with prominent nuclear internalization and large areas of myofibrillar disorganization. *Neuropathol. Appl. Neurobiol.* 37:271–284. <https://doi.org/10.1111/j.1365-2990.2010.01149.x>
- Bharucha-Goebel, D.X., M. Santi, L. Medne, K. Zukosky, K. Zukosky, J. Dastgir, P.B. Shieh, T. Winder, G. Tennekoon, R.S. Finkel, et al. 2013. Severe congenital RYR1-associated myopathy: The expanding clinicopathologic and genetic spectrum. *Neurology*. 80:1584–1589. <https://doi.org/10.1212/WNL.0b013e3182900380>
- Biral, D., P. Volpe, E. Damiani, and A. Margreth. 1992. Coexistence of two calsequestrin isoforms in rabbit slow-twitch skeletal muscle fibers. *FEBS Lett.* 299:175–178. [https://doi.org/10.1016/0014-5793\(92\)80241-8](https://doi.org/10.1016/0014-5793(92)80241-8)
- Böhm, J., F. Chevessier, A. Maues De Paula, C. Koch, S. Attarian, C. Feger, D. Hantäi, P. Laforêt, K. Ghorab, J.-M. Vallat, et al. 2013. Constitutive activation of the calcium sensor STIM1 causes tubular-aggregate myopathy. *Am. J. Hum. Genet.* 92:271–278. <https://doi.org/10.1016/j.ajhg.2012.12.007>
- Böhm, J., M. Bulla, J.E. Urquhart, E. Malfatti, S.G. Williams, J. O'Sullivan, A. Szalauer, C. Koch, G. Baranello, M. Mora, et al. 2017. ORAI1 mutations with distinct channel gating defects in tubular aggregate myopathy. *Hum. Mutat.* 38:426–438. <https://doi.org/10.1002/humu.23172>
- Böhm, J., and J. Laporte. 2018. Gain-of-function mutations in STIM1 and ORAI1 causing tubular aggregate myopathy and Stormorken syndrome. *Cell Calcium*. 76:1–9. <https://doi.org/10.1016/j.ceca.2018.07.008>
- Böhm, J., X. Lornage, F. Chevessier, C. Birck, S. Zanotti, P. Cudia, M. Bulla, F. Granger, M.T. Bui, M. Sartori, et al. 2018. CASQ1 mutations impair calsequestrin polymerization and cause tubular aggregate myopathy. *Acta Neuropathol.* 135:149–151. <https://doi.org/10.1007/s00401-017-1775-x>
- Boncompagni, S., A.E. Rossi, M. Micaroni, S.L. Hamilton, R.T. Dirksen, C. Franzini-Armstrong, and F. Protasi. 2009. Characterization and temporal development of cores in a mouse model of malignant hyperthermia. *Proc. Natl. Acad. Sci. USA*. 106:21996–22001. <https://doi.org/10.1073/pnas.0911496106>
- Boncompagni, S., R.E. Loy, R.T. Dirksen, and C. Franzini-Armstrong. 2010. The I4895T mutation in the type 1 ryanodine receptor induces fiber-type specific alterations in skeletal muscle that mimic premature aging. *Aging Cell*. 9:958–970. <https://doi.org/10.1111/j.1474-9726.2010.00623.x>
- Boncompagni, S., M. Thomas, J.R. Lopez, P.D. Allen, Q. Yuan, E.G. Kranias, C. Franzini-Armstrong, and C.F. Perez. 2012. Triadin/junctin double null mouse reveals a differential role for triadin and junctin in anchoring CASQ to the jSR and regulating  $\text{Ca}^{2+}$  homeostasis. *PLoS One*. 7:e39962. <https://doi.org/10.1371/journal.pone.0039962>
- Boncompagni, S., A. Michelucci, L. Pietrangelo, R.T. Dirksen, and F. Protasi. 2017. Exercise-dependent formation of new junctions that promote STIM1-Orai1 assembly in skeletal muscle. *Sci. Rep.* 7:14286. <https://doi.org/10.1038/s41598-017-14134-0>
- Bönnemann, C.G., C.H. Wang, S. Quijano-Roy, N. Deconinck, E. Bertini, A. Ferreiro, F. Muntoni, C. Sewry, K. Bérout, K.D. Mathews, et al. 2014. Diagnostic approach to the congenital muscular dystrophies. *Neuromuscul. Disord.* 24:289–311. <https://doi.org/10.1016/j.nmd.2013.12.011>
- Bootman, M.D., and G. Bultynck. 2020. Fundamentals of cellular calcium signaling: A primer. *Cold Spring Harbor Perspect. Biol.* 12:a038802. <https://doi.org/10.1101/cshperspect.a038802>
- Borovikov, Y.S., O.E. Karpicheva, S.V. Avrova, A.O. Simonyan, V.V. Sirenko, and C.S. Redwood. 2020. The molecular mechanism of muscle dysfunction associated with the R133W mutation in Tpm2.2. *Biochem. Biophys. Res. Commun.* 523:258–262. <https://doi.org/10.1016/j.bbrc.2019.12.061>
- Boyden, S.E., L.J. Mahoney, G. Kawahara, J.A. Myers, S. Mitsuhashi, E.A. Estrella, A.R. Duncan, F. Dey, E.T. DeChene, J.M. Blasko-Goehring, et al. 2012. Mutations in the satellite cell gene MEGF10 cause a recessive congenital myopathy with minicores. *Neurogenetics*. 13:115–124. <https://doi.org/10.1007/s10048-012-0315-z>
- Brandman, O., J. Liou, W.S. Park, and T. Meyer. 2007. STIM2 is a feedback regulator that stabilizes basal cytosolic and endoplasmic reticulum  $\text{Ca}^{2+}$  levels. *Cell*. 131:1327–1339. <https://doi.org/10.1016/j.cell.2007.11.039>
- Brennan, S., M. Garcia-Castañeda, A. Michelucci, N. Sabha, S. Malik, L. Groom, L. Wei LaPierre, J.J. Dowling, and R.T. Dirksen. 2019. Mouse model of severe recessive RYR1-related myopathy. *Hum. Mol. Genet.* 28: 3024–3036. <https://doi.org/10.1093/hmg/ddz105>
- Brini, M., S. Manni, N. Pierobon, G.G. Du, P. Sharma, D.H. MacLennan, and E. Carafoli. 2005.  $\text{Ca}^{2+}$  signaling in HEK-293 and skeletal muscle cells

- expressing recombinant ryanodine receptors harboring malignant hyperthermia and central core disease mutations. *J. Biol. Chem.* 280: 15380–15389. <https://doi.org/10.1074/jbc.M410421200>
- Brugnoni, R., E. Canioni, M. Filosto, A. Pini, P. Tonin, T. Rossi, C. Canavese, M. Eoli, G. Siciliano, G. Lauria, et al. 2022. Mutations associated with hypokalemic periodic paralysis: From hotspot regions to complete analysis of CACNA1S and SCN4A genes. *Neurogenetics*. 23:19–25. <https://doi.org/10.1007/s10048-021-00673-2>
- Bulla, M., G. Gyimesi, J.H. Kim, R. Bhardwaj, M.A. Hediger, M. Frieden, and N. Demareux. 2019. ORAI1 channel gating and selectivity is differentially altered by natural mutations in the first or third transmembrane domain. *J. Physiol.* 597:561–582. <https://doi.org/10.1113/JP277079>
- Cacheux, M., A. Blum, M. Sébastien, A.S. Wozny, J. Brocard, K. Mamchaoui, V. Mouly, N. Roux-Buisson, J. Rendu, N. Monnier, et al. 2015. Functional characterization of a central core disease RyR1 mutation (p.Y4864H) associated with quantitative defect in RyR1 protein. *J. Neuromuscul. Dis.* 2:421–432. <https://doi.org/10.3233/JND-150073>
- Canato, M., P. Capitanio, L. Cancellara, L. Leanza, A. Raffaello, D.V. Reane, L. Marcucci, A. Michelucci, F. Protas, and C. Reggiani. 2019. Excessive accumulation of Ca<sup>2+</sup> in mitochondria of Y522S-RYR1 knock-in mice: A link between leak from the sarcoplasmic reticulum and altered redox state. *Front. Physiol.* 10:1142. <https://doi.org/10.3389/fphys.2019.01142>
- Capacchione, J.F., and S.M. Muldoon. 2009. The relationship between exertional heat illness, exertional rhabdomyolysis, and malignant hyperthermia. *Anesth. Analg.* 109:1065–1069. <https://doi.org/10.1213/ane.0b013e3181a9d8d9>
- Carrell, E.M., A.R. Coppola, H.J. McBride, and R.T. Dirksen. 2016. Orail enhances muscle endurance by promoting fatigue-resistant type I fiber content but not through acute store-operated Ca<sup>2+</sup> entry. *FASEB J.* 30: 4109–4119. <https://doi.org/10.1096/fj.2016060621R>
- Caswell, A.H., H.K. Motoike, H. Fan, and N.R. Brandt. 1999. Location of ryanodine receptor binding site on skeletal muscle triadin. *Biochemistry*. 38:90–97. <https://doi.org/10.1021/bi981306>
- Ceyhan-Birsoy, O., P.B. Agrawal, C. Hidalgo, K. Schmitz-Abe, E.T. DeChene, L.C. Swanson, R. Soemedi, N. Vasli, S.T. Iannaccone, P.B. Shieh, et al. 2013. Recessive truncating titin gene, TTN, mutations presenting as centronuclear myopathy. *Neurology*. 81:1205–1214. <https://doi.org/10.1212/WNL.0b013e3182a6ca62>
- Chan, W.M., W. Welch, and R. Sitsapasan. 2000. Structural factors that determine the ability of adenosine and related compounds to activate the cardiac ryanodine receptor. *Br. J. Pharmacol.* 130:1618–1626. <https://doi.org/10.1038/sj.bjp.0703459>
- Chang, L., X. Liu, C.P. Diggle, J.P. Boyle, P.M. Hopkins, M.-A. Shaw, and P.D. Allen. 2020. Bioenergetic defects in muscle fibers of RYR1 mutant knock-in mice associated with malignant hyperthermia. *J. Biol. Chem.* 295:15226–15235. <https://doi.org/10.1074/jbc.RA120.013537>
- Chauveau, C., C.G. Bonnemant, C. Julien, A.L. Kho, H. Marks, B. Talim, P. Maury, M.C. Arne-Bes, E. Uro-Coste, A. Alexandrovich, et al. 2014. Recessive TTN truncating mutations define novel forms of core myopathy with heart disease. *Hum. Mol. Genet.* 23:980–991. <https://doi.org/10.1093/hmg/ddt494>
- Chelu, M.G., S.A. Goonasekera, W.J. Durham, W. Tang, J.D. Lueck, J. Riehl, I.N. Pessah, P. Zhang, M.B. Bhattacharjee, R.T. Dirksen, and S.L. Hamilton. 2006. Heat- and anesthesia-induced malignant hyperthermia in an RyR1 knock-in mouse. *FASEB J.* 20:329–330. <https://doi.org/10.1096/fj.05-4497fje>
- Chen, W., A. Koop, Y. Liu, W. Guo, J. Wei, R. Wang, D.H. MacLennan, R.T. Dirksen, and S.R.W. Chen. 2017. Reduced threshold for store overload-induced Ca<sup>2+</sup> release is a common defect of RyR1 mutations associated with malignant hyperthermia and central core disease. *Biochem. J.* 474: 2749–2761. <https://doi.org/10.1042/BCJ20170282>
- Chen, X., Y.-Q. Gao, Y.-Y. Zheng, W. Wang, P. Wang, J. Liang, W. Zhao, T. Tao, J. Sun, L. Wei, et al. 2020. The intragenic microRNA miR199A1 in the dynamin 2 gene contributes to the pathology of X-linked centronuclear myopathy. *J. Biol. Chem.* 295:8656–8667. <https://doi.org/10.1074/jbc.RA119.010839>
- Cherednichenko, G., C.W. Ward, W. Feng, E. Cabrales, L. Michaelson, M. Samsó, J.R. López, P.D. Allen, and I.N. Pessah. 2008. Enhanced excitation-coupled calcium entry in myotubes expressing malignant hyperthermia mutation R163C is attenuated by dantrolene. *Mol. Pharmacol.* 73:1203–1212. <https://doi.org/10.1124/mol.107.043299>
- Chernorudskiy, A., E. Varone, S.F. Colombo, S. Fumagalli, A. Cagnotto, A. Cattaneo, M. Briens, M. Baltzinger, L. Kuhn, A. Bachi, et al. 2020. Selenoprotein N is an endoplasmic reticulum calcium sensor that links luminal calcium levels to a redox activity. *Proc. Natl. Acad. Sci. USA.* 117: 21288–21298. <https://doi.org/10.1073/pnas.2003847117>
- Chevessier, F., I. Marty, M. Paturneau-Jouas, D. Hantai, and M. Verdière-Sahuqué. 2004. Tubular aggregates are from whole sarcoplasmic reticulum origin: Alterations in calcium binding protein expression in mouse skeletal muscle during aging. *Neuromuscul. Disord.* 14:208–216. <https://doi.org/10.1016/j.nmd.2003.11.007>
- Chevessier, F., S. Bauché-Godard, J.-P. Leroy, J. Koenig, M. Paturneau-Jouas, B. Eymard, D. Hantai, and M. Verdière-Sahuqué. 2005. The origin of tubular aggregates in human myopathies. *J. Pathol.* 207:313–323. <https://doi.org/10.1002/path.1832>
- Clarke, N.F. 2011. Congenital fiber-type disproportion. *Semin. Pediatr. Neurol.* 18:264–271. <https://doi.org/10.1016/j.spen.2011.10.008>
- Clarke, N.F., K. Amburgey, J. Teener, S. Camelo-Piragua, A. Kesari, J. Punetha, L.B. Waddell, M. Davis, N.G. Laing, N. Monnier, et al. 2013. A novel mutation expands the genetic and clinical spectrum of MYH7-related myopathies. *Neuromuscul. Disord.* 23:432–436. <https://doi.org/10.1016/j.nmd.2013.02.009>
- Conte, E., P. Imbrici, P. Mantuano, M.A. Coppola, G.M. Camerino, A. De Luca, and A. Liantonio. 2021a. Alteration of STIM1/Orail-mediated SOCE in skeletal muscle: Impact in genetic muscle diseases and beyond. *Cells*. 10: 2722. <https://doi.org/10.3390/cells10102722>
- Conte, E., A. Pannunzio, P. Imbrici, G.M. Camerino, L. Maggi, M. Mora, S. Gibertini, O. Cappellari, A. De Luca, M. Coluccia, and A. Liantonio. 2021b. Gain-of-Function STIM1 L96V mutation causes myogenesis alteration in muscle cells from a patient affected by tubular aggregate myopathy. *Front. Cell Dev. Biol.* 9:635063. <https://doi.org/10.3389/fcell.2021.635063>
- Cordero-Sanchez, C., B. Riva, S. Reano, N. Clemente, I. Zaggia, F.A. Ruffinatti, A. Potenzi, T. Pirali, S. Raffa, S. Sangaletti, et al. 2019. A luminal EF-hand mutation in STIM1 in mice causes the clinical hallmarks of tubular aggregate myopathy. *Dis. Model Mech.* 13:dmm041111. <https://doi.org/10.1242/dmm.041111>
- Cowling, B.S., I. Prokic, H. Tasfaout, A. Rabai, F. Humbert, B. Rinaldi, A.-S. Nicot, C. Kretz, S. Friant, A. Roux, and J. Laporte. 2017. Amphiphysin (BIN1) negatively regulates dynamin 2 for normal muscle maturation. *J. Clin. Invest.* 127:4477–4487. <https://doi.org/10.1172/JCI90542>
- Cullup, T., P.J. Lamont, S. Cirak, M.S. Damian, W. Wallefeld, R. Gooding, S.V. Tan, J. Sheehan, F. Muntoni, S. Abbs, et al. 2012. Mutations in MYH7 cause Multi-minicore Disease (MmD) with variable cardiac involvement. *Neuromuscul. Disord.* 22:1096–1104. <https://doi.org/10.1016/j.nmd.2012.06.007>
- Cully, T.R., R.M. Murphy, L. Roberts, T. Raastad, R.G. Fasset, J.S. Coombes, I.D. Jayasinghe, and B.S. Launikonis. 2017. Human skeletal muscle plasmalemma alters its structure to change its Ca<sup>2+</sup>-handling following heavy-load resistance exercise. *Nat. Commun.* 8:14266. <https://doi.org/10.1038/ncomms14266>
- Dagan, I., and R. Palty. 2021. Regulation of store-operated Ca<sup>2+</sup> entry by SARAF. *Cells*. 10:1887. <https://doi.org/10.3390/cells10081887>
- Darbellay, B., S. Arnaudeau, C.R. Bader, S. König, and L. Bernheim. 2011. STIM1 is a new actin-binding splice variant involved in fast repetitive Ca<sup>2+</sup> release. *J. Cell Biol.* 194:335–346. <https://doi.org/10.1083/jcb.201012157>
- DeFronzo, R.A. 1988. Lilly lecture 1987. The triumvirate: Beta-cell, muscle, liver. A collusion responsible for NIDDM. *Diabetes*. 37:667–687. <https://doi.org/10.2337/diab.37.6.667>
- des Georges, A., O.B. Clarke, R. Zalk, Q. Yuan, K.J. Condon, R.A. Grassucci, W.A. Hendrickson, A.R. Marks, and J. Frank. 2016. Structural basis for gating and activation of RyR1. *Cell*. 167:145–157.e17. <https://doi.org/10.1016/j.cell.2016.08.075>
- Desai, P.N., X. Zhang, S. Wu, A. Janoshazi, S. Bolimunta, J.W. Putney, and M. Trebak. 2015. Multiple types of calcium channels arising from alternative translation initiation of the Orail message. *Sci. Signal.* 8:ra74. <https://doi.org/10.1126/scisignal.aaa8323>
- Dirksen, R.T., and G. Avila. 2002. Altered ryanodine receptor function in central core disease: Leaky or uncoupled Ca(2+) release channels?. *Trends Cardiovasc. Med.* 12:189–197. [https://doi.org/10.1016/s1050-1738\(02\)00163-9](https://doi.org/10.1016/s1050-1738(02)00163-9)
- Dirksen, R.T., and G. Avila. 2004. Distinct effects on Ca<sup>2+</sup> handling caused by malignant hyperthermia and central core disease mutations in RyR1. *Biophys. J.* 87:3193–3204. <https://doi.org/10.1529/biophysj.104.048447>
- Dlamini, N., N.C. Voermans, S. Lillis, K. Stewart, E.-J. Kamsteeg, G. Drost, R. Quinlivan, M. Snoeck, F. Norwood, A. Radunovic, et al. 2013. Mutations in RYR1 are a common cause of exertional myalgia and rhabdomyolysis. *Neuromuscul. Disord.* 23:540–548. <https://doi.org/10.1016/j.nmd.2013.03.008>



- Dowling, J.J., S. Lillis, K. Amburgey, H. Zhou, S. Al-Sarraj, S.J.A. Buk, E. Wraige, G. Chow, S. Abbs, S. Leber, et al. 2011. King-Denborough syndrome with and without mutations in the skeletal muscle ryanodine receptor (RYR1) gene. *Neuromuscul. Disord.* 21:420–427. <https://doi.org/10.1016/j.nmd.2011.03.006>
- Dulhunty, A.F. 2006. Excitation-contraction coupling from the 1950s into the new millennium. *Clin. Exp. Pharmacol. Physiol.* 33:763–772. <https://doi.org/10.1111/j.1440-1681.2006.04441.x>
- Dulhunty, A., L. Wei, and N. Beard. 2009. Juncin—the quiet achiever. *J. Physiol.* 587:3135–3137. <https://doi.org/10.1113/jphysiol.2009.171959>
- Durham, W.J., P. Aracena-Parks, C. Long, A.E. Rossi, S.A. Goonasekera, S. Boncompagni, D.L. Galvan, C.P. Gilman, M.R. Baker, N. Shirokova, et al. 2008. RyR1 S-nitrosylation underlies environmental heat stroke and sudden death in Y522S RyR1 knockin mice. *Cell.* 133:53–65. <https://doi.org/10.1016/j.cell.2008.02.042>
- Durieux, A.C., S. Vassilopoulos, J. Lainé, B. Frayssé, L. Briñas, B. Prudhon, J. Castells, D. Freyssen, G. Bonne, P. Guicheney, and M. Bitoun. 2012. A centronuclear myopathy—dynamin 2 mutation impairs autophagy in mice. *Traffic.* 13:869–879. <https://doi.org/10.1111/j.1600-0854.2012.01348.x>
- Dyrda, A., S. Koenig, and M. Frieden. 2020. STIM1 long and STIM1 gate differently TRPC1 during store-operated calcium entry. *Cell Calcium.* 86: 102134. <https://doi.org/10.1016/j.ceca.2019.102134>
- Eftremov, R.G., A. Leitner, R. Aebersold, and S. Raunser. 2015. Architecture and conformational switch mechanism of the ryanodine receptor. *Nature.* 517:39–43. <https://doi.org/10.1038/nature13916>
- Elbaz, M., A. Ruiz, C. Bachmann, J. Eckhardt, P. Pelczar, E. Venturi, C. Lindsay, A.D. Wilson, A. Alhussni, T. Humberstone, et al. 2019. Quantitative RyR1 reduction and loss of calcium sensitivity of RyR1Q197Ofs-X16+A4329D cause cores and loss of muscle strength. *Hum. Mol. Genet.* 28:2987–2999. <https://doi.org/10.1093/hmg/ddz092>
- Elbaz, M., A. Ruiz, S. Nicolay, C. Tupini, C. Bachmann, J. Eckhardt, S. Benucci, P. Pelczar, S. Treves, and F. Zorzato. 2020. Bi-allelic expression of the RyR1 p.A4329D mutation decreases muscle strength in slow-twitch muscles in mice. *J. Biol. Chem.* 295:10331–10339. <https://doi.org/10.1074/jbc.RA120.013846>
- Ellinas, H., and M.A. Albrecht. 2020. Malignant hyperthermia update. *Anesthesiol. Clin.* 38:165–181. <https://doi.org/10.1016/j.anclin.2019.10.010>
- Eltit, J.M., X. Ding, I.N. Pessah, P.D. Allen, and J.R. Lopez. 2013. Nonspecific sarcolemmal cation channels are critical for the pathogenesis of malignant hyperthermia. *FASEB J.* 27:991–1000. <https://doi.org/10.1096/fj.12-218354>
- Emrich, S.M., R.E. Yoast, and M. Trebak. 2022. Physiological functions of CRAC channels. *Annu. Rev. Physiol.* 84:355–379. <https://doi.org/10.1146/annurev-physiol-052521-013426>
- Endo, Y., S. Noguchi, Y. Hara, Y.K. Hayashi, K. Motomura, S. Miyatake, N. Murakami, S. Tanaka, S. Yamashita, R. Kizu, et al. 2015. Dominant mutations in ORAI1 cause tubular aggregate myopathy with hypocalcemia via constitutive activation of store-operated Ca<sup>2+</sup> channels. *Hum. Mol. Genet.* 24:637–648. <https://doi.org/10.1093/hmg/ddu477>
- Enomoto, M., T. Nishikawa, S.-I. Back, N. Ishiyama, L. Zheng, P.B. Stathopoulos, and M. Ikura. 2020. Coordination of a single calcium ion in the EF-hand maintains the off state of the stromal interaction molecule luminal domain. *J. Mol. Biol.* 432:367–383. <https://doi.org/10.1016/j.jmb.2019.10.003>
- Estève, E., J.M. Eltit, R.A. Bannister, K. Liu, I.N. Pessah, K.G. Beam, P.D. Allen, and J.R. López. 2010. A malignant hyperthermia-inducing mutation in RYR1 (R163C): Alterations in Ca<sup>2+</sup> entry, release, and retrograde signaling to the DHPR. *J. Gen. Physiol.* 135:619–628. <https://doi.org/10.1085/jgp.200910328>
- Fahrner, M., M. Stadlbauer, M. Muik, P. Rathner, P. Stathopoulos, M. Ikura, N. Müller, and C. Romanin. 2018. A dual mechanism promotes switching of the stormorken STIM1 R304W mutant into the activated state. *Nat. Commun.* 9:825. <https://doi.org/10.1038/s41467-018-03062-w>
- Fananapazir, L., M.C. Dalakas, F. Cyran, G. Cohn, and N.D. Epstein. 1993. Missense mutations in the beta-myosin heavy-chain gene cause central core disease in hypertrophic cardiomyopathy. *Proc. Natl. Acad. Sci. USA.* 90:3993–3997. <https://doi.org/10.1073/pnas.90.9.3993>
- Ferguson, S.M., and P. De Camilli. 2012. Dynamin, a membrane-remodelling GTPase. *Nat. Rev. Mol. Cell Biol.* 13:75–88. <https://doi.org/10.1038/nrm3266>
- Ferreiro, A., S. Quijano-Roy, C. Pichereau, B. Moghadaszadeh, N. Goemans, C. Bönnemann, H. Jungbluth, V. Straub, M. Villanova, J.-P. Leroy, et al. 2002. Mutations of the selenoprotein N gene, which is implicated in rigid spine muscular dystrophy, cause the classical phenotype of multiminicore disease: Reassessing the nosology of early-onset myopathies. *Am. J. Hum. Genet.* 71:739–749. <https://doi.org/10.1086/342719>
- Feske, S., Y. Gwack, M. Prakriya, S. Srikanth, S.-H. Puppel, B. Tanasa, P.G. Hogan, R.S. Lewis, M. Daly, and A. Rao. 2006. A mutation in Orail causes immune deficiency by abrogating CRAC channel function. *Nature.* 441:179–185. <https://doi.org/10.1038/nature04702>
- Fiorillo, C., G. Astrea, M. Savarese, D. Cassandrini, G. Brisca, F. Trucco, M. Pedemonte, R. Trovato, L. Ruggiero, L. Vercelli, et al. 2016. MYH7-related myopathies: Clinical, histopathological and imaging findings in a cohort of Italian patients. *Orphanet J. Rare Dis.* 11:91. <https://doi.org/10.1186/s13023-016-0476-1>
- Fisher, D.Z., N. Chaudhary, and G. Blobel. 1986. cDNA sequencing of nuclear lamins A and C reveals primary and secondary structural homology to intermediate filament proteins. *Proc. Natl. Acad. Sci. USA.* 83:6450–6454. <https://doi.org/10.1073/pnas.83.17.6450>
- Flucher, B.E. 2020. Skeletal muscle CaV1.1 channelopathies. *Pflügers Arch.* 472: 739–754. <https://doi.org/10.1007/s00424-020-02368-3>
- Franzini-Armstrong, C. 2018. The relationship between form and function throughout the history of excitation-contraction coupling. *J. Gen. Physiol.* 150:189–210. <https://doi.org/10.1085/jgp.201711889>
- Fuchs, S., A. Rensing-Ehl, C. Speckmann, B. Bengsch, A. Schmitt-Graeff, I. Bondzio, A. Maul-Pavicic, T. Bass, T. Vraetz, B. Strahm, et al. 2012. Antiviral and regulatory T cell immunity in a patient with stromal interaction molecule 1 deficiency. *J. Immunol.* 188:1523–1533. <https://doi.org/10.4049/jimmunol.1102507>
- Fujii, J., K. Otsu, F. Zorzato, S. de Leon, V.K. Khanna, J.E. Weiler, P.J. O'Brien, and D.H. MacLennan. 1991. Identification of a mutation in porcine ryanodine receptor associated with malignant hyperthermia. *Science.* 253: 448–451. <https://doi.org/10.1126/science.1862346>
- Gaburjakova, M., N.C. Bal, J. Gaburjakova, and M. Periasamy. 2013. Functional interaction between calsequestrin and ryanodine receptor in the heart. *Cell. Mol. Life Sci.* 70:2935–2945. <https://doi.org/10.1007/s00018-012-1199-7>
- Galli, L., A. Orrico, S. Lorenzini, S. Censini, M. Falciani, A. Covacci, V. Tegazzini, V. Sorrentino, and V. Sorrentino. 2006. Frequency and localization of mutations in the 106 exons of the RYR1 gene in 50 individuals with malignant hyperthermia. *Hum. Mutat.* 27:830. <https://doi.org/10.1002/humu.9442>
- Gamage, T.H., G. Gunnes, R.H. Lee, W.E. Louch, A. Holmgren, J.D. Bruton, E. Lengle, T.R.S. Kolstad, T. Revold, S.S. Amundsen, et al. 2018. STIM1 R304W causes muscle degeneration and impaired platelet activation in mice. *Cell Calcium.* 76:87–100. <https://doi.org/10.1016/j.ceca.2018.10.001>
- Gardner, L., D.M. Miller, C. Daly, P.K. Gupta, C. House, D. Roiz de Sa, M.-A. Shaw, and P.M. Hopkins. 2020. Investigating the genetic susceptibility to exertional heat illness. *J. Med. Genet.* 57:531–541. <https://doi.org/10.1136/jmedgenet-2019-106461>
- Garibaldi, M., F. Fattori, B. Riva, C. Labasse, G. Brochier, P. Ottaviani, S. Sacconi, E. Vizzaccaro, F. Laschena, N.B. Romero, et al. 2017. A novel gain-of-function mutation in ORAI1 causes late-onset tubular aggregate myopathy and congenital myositis. *Clin. Genet.* 91:780–786. <https://doi.org/10.1111/cge.12888>
- Garibaldi, M., J. Rendu, J. Brocard, E. Lacene, J. Fauré, G. Brochier, M. Beuvin, C. Labasse, A. Madeline, E. Malfatti, et al. 2019. “Dusty core disease” (DuCD): Expanding morphological spectrum of RYR1 recessive myopathies. *Acta Neuropathol. Commun.* 7:3. <https://doi.org/10.1186/s40478-018-0655-5>
- Gillard, E.F., K. Otsu, J. Fujii, V.K. Khanna, S. de Leon, J. Derdemezi, B.A. Britt, C.L. Duff, R.G. Worton, and D.H. MacLennan. 1991. A substitution of cysteine for arginine 614 in the ryanodine receptor is potentially causative of human malignant hyperthermia. *Genomics.* 11:751–755. [https://doi.org/10.1016/0888-7543\(91\)90084-r](https://doi.org/10.1016/0888-7543(91)90084-r)
- Gillespie, D., L. Xu, and G. Meissner. 2014. Selecting ions by size in a calcium channel: The ryanodine receptor case study. *Biophys. J.* 107:2263–2273. <https://doi.org/10.1016/j.bpj.2014.09.031>
- Glitsch, M.D., D. Bakowski, and A.B. Parekh. 2002. Store-operated Ca<sup>2+</sup> entry depends on mitochondrial Ca<sup>2+</sup> uptake. *EMBO J.* 21:6744–6754. <https://doi.org/10.1093/emboj/cdf675>
- Golini, L., C. Chouabe, C. Berthier, V. Cusimano, M. Fornaro, R. Bonvallet, L. Formoso, E. Giacomello, V. Jacquemond, V. Sorrentino, and V. Sorrentino. 2011. Juncophilin 1 and 2 proteins interact with the L-type Ca<sup>2+</sup> channel dihydropyridine receptors (DHPRs) in skeletal muscle. *J. Biol. Chem.* 286:43717–43725. <https://doi.org/10.1074/jbc.M111.292755>
- Gómez-Oca, R., B.S. Cowling, and J. Laporte. 2021. Common pathogenic mechanisms in centronuclear and myotubular myopathies and latest treatment advances. *Int. J. Mol. Sci.* 22:11377. <https://doi.org/10.3390/ijms22111377>
- Gong, D., N. Yan, and H.A. Ledford. 2021. Structural basis for the modulation of ryanodine receptors. *Trends Biochem. Sci.* 46:489–501. <https://doi.org/10.1016/j.tibs.2020.11.009>



- Gotoh, I., M. Adachi, and E. Nishida. 2001. Identification and characterization of a novel MAP kinase kinase kinase, MLTK. *J. Biol. Chem.* 276: 4276–4286. <https://doi.org/10.1074/jbc.M008595200>
- Groom, L., S.M. Muldoon, Z.Z. Tang, B.W. Brandom, M. Bayarsaikhan, S. Bina, H.-S. Lee, X. Qiu, N. Sambuughin, and R.T. Dirksen. 2011. Identical de novo mutation in the type 1 ryanodine receptor gene associated with fatal, stress-induced malignant hyperthermia in two unrelated families. *Anesthesiology*. 115:938–945. <https://doi.org/10.1097/ALN.0b013e3182320068>
- Grosse, J., A. Braun, D. Varga-Szabo, N. Beyersdorf, B. Schneider, L. Zeitlmann, P. Hanke, P. Schropp, S. Mühlstedt, C. Zorn, et al. 2007. An EF hand mutation in Stim1 causes premature platelet activation and bleeding in mice. *J. Clin. Invest.* 117:3540–3550. <https://doi.org/10.1172/JCI32312>
- Grzybowski, M., A. Schänzer, A. Pepler, C. Heller, B.A. Neubauer, and A. Hahn. 2017. Novel STAC3 mutations in the first non-amerindian patient with native American myopathy. *Neuropediatrics*. 48:451–455. <https://doi.org/10.1055/s-0037-1601868>
- Guo, W., and K.P. Campbell. 1995. Association of triadin with the ryanodine receptor and calsequestrin in the lumen of the sarcoplasmic reticulum. *J. Biol. Chem.* 270:9027–9030. <https://doi.org/10.1074/jbc.270.16.9027>
- Gurgel-Giannetti, J., L.S. Souza, G.F. Messina de Pádua Andrade, M.F. Derlene, Z.M.A. Meira, B.V.M. Azevedo, W.C. Jr, S.S.L. Diniz, M.B. Carvalhais, J.R.S. Oliveira, et al. 2021. A Novel SPEG mutation causing congenital myopathy with fiber size disproportion and dilated cardiomyopathy with heart transplantation. *Neuromuscul. Disord.* 31: 1199–1206. <https://doi.org/10.1016/j.nmd.2021.09.005>
- Gwack, Y., S. Srikanth, M. Oh-Hora, P.G. Hogan, E.D. Lamperti, M. Yamashita, C. Gelinas, D.S. Neems, Y. Sasaki, S. Feske, et al. 2008. Hair loss and defective T- and B-cell function in mice lacking ORAI1. *Mol. Cell. Biol.* 28:5209–5222. <https://doi.org/10.1128/MCB.00360-08>
- Harris, E., U. Burki, C. Marini-Bettolo, M. Neri, C. Scotton, J. Hudson, M. Bertoli, T. Evangelista, B. Vroiling, T. Polvikoski, et al. 2017. Complex phenotypes associated with STIM1 mutations in both coiled coil and EF-hand domains. *Neuromuscul. Disord.* 27:861–872. <https://doi.org/10.1016/j.nmd.2017.05.002>
- Hernández-Lain, A., I. Husson, N. Monnier, C. Farnoux, G. Brochier, E. Lachène, M. Beuvin, M. Viou, L. Manéré, K.G. Claeys, et al. 2011. De novo RYR1 heterozygous mutation (I4898T) causing lethal core-rod myopathy in twins. *Eur. J. Med. Genet.* 54:29–33. <https://doi.org/10.1016/j.ejmg.2010.09.009>
- Hernández-Ochoa, E.O., S.J.P. Pratt, R.M. Lovering, and M.F. Schneider. 2015. Critical role of intracellular RyR1 calcium release channels in skeletal muscle function and disease. *Front. Physiol.* 6:420. <https://doi.org/10.3389/fphys.2015.00420>
- Hnia, K., I. Vaccari, A. Bolino, and J. Laporte. 2012. Myotubularin phosphoinositide phosphatases: Cellular functions and disease pathophysiology. *Trends Mol. Med.* 18:317–327. <https://doi.org/10.1016/j.molmed.2012.04.004>
- Holterman, C.E., F. Le Grand, S. Kuang, P. Seale, and M.A. Rudnicki. 2007. Megf10 regulates the progression of the satellite cell myogenic program. *J. Cell Biol.* 179:911–922. <https://doi.org/10.1083/jcb.200709083>
- Hopkins, P.M. 2011. Malignant hyperthermia: Pharmacology of triggering. *Br. J. Anaesth.* 107:48–56. <https://doi.org/10.1093/bja/aer132>
- Hopkins, P.M., H. Rüffert, M.M. Snoeck, T. Girard, K.P.E. Glahn, F.R. Ellis, C.R. Müller, A. Urwyler, and European Malignant Hyperthermia Group. 2015. European Malignant Hyperthermia Group guidelines for investigation of malignant hyperthermia susceptibility. *Br. J. Anaesth.* 115: 531–539. <https://doi.org/10.1093/bja/aev225>
- Horstick, E.J., J.W. Linsley, J.J. Dowling, M.A. Hauser, K.K. McDonald, A. Ashley-Koch, L. Saint-Amant, A. Satish, W.W. Cui, W. Zhou, et al. 2013. Stac3 is a component of the excitation-contraction coupling machinery and mutated in Native American myopathy. *Nat. Commun.* 4:1952. <https://doi.org/10.1038/ncomms2952>
- Hoth, M., and R. Penner. 1992. Depletion of intracellular calcium stores activates a calcium current in mast cells. *Nature*. 355:353–356. <https://doi.org/10.1038/355353a0>
- Hoth, M., D.C. Button, and R.S. Lewis. 2000. Mitochondrial control of calcium-channel gating: A mechanism for sustained signaling and transcriptional activation in T lymphocytes. *Proc. Natl. Acad. Sci. USA*. 97:10607–10612. <https://doi.org/10.1073/pnas.180143997>
- Hu, H., Z. Wang, R. Wei, G. Fan, Q. Wang, K. Zhang, and C.C. Yin. 2015. The molecular architecture of dihydropyridine recep-tor/L-type Ca<sup>2+</sup> channel complex. *Sci. Rep.* 5:8370. <https://doi.org/10.1038/srep08370>
- Isaacs, H., and M.E. Badenhorst. 1992. Dominantly inherited malignant hyperthermia (MH) in the King-Denborough syndrome. *Muscle Nerve*. 15: 740–742. <https://doi.org/10.1002/mus.880150619>
- Jeong, S.Y., M.R. Oh, J.H. Choi, J.S. Woo, and E.H. Lee. 2021. Calsequestrin 1 is an active partner of stromal interaction molecule 2 in skeletal muscle. *Cells*. 10:2821. <https://doi.org/10.3390/cells10112821>
- Jessen, N., and L.J. Goodyear. 2005. Contraction signaling to glucose transport in skeletal muscle. *J. Appl. Physiol.* 99:330–337. <https://doi.org/10.1152/japplphysiol.00175.2005>
- Jiang, D., W. Chen, J. Xiao, R. Wang, H. Kong, P.P. Jones, L. Zhang, B. Fruen, and S.R.W. Chen. 2008. Reduced threshold for luminal Ca<sup>2+</sup> activation of RyR1 underlies a causal mechanism of porcine malignant hyperthermia. *J. Biol. Chem.* 283:20813–20820. <https://doi.org/10.1074/jbc.M801944200>
- Johnson, M.T., P. Xin, J.C. Benson, T. Pathak, V. Walter, S.M. Emrich, R.E. Yoast, X. Zhang, G. Cao, R.A. Panettieri Jr, and M. Trebak. 2022. STIM1 is a core trigger of airway smooth muscle remodeling and hyper-responsiveness in asthma. *Proc. Natl. Acad. Sci. USA*. 119:e2114557118. <https://doi.org/10.1073/pnas.2114557118>
- Johnston, J.J., R.T. Dirksen, T. Girard, S.G. Gonsalves, P.M. Hopkins, S. Riazi, L.A. Saddic, N. Sambuughin, R. Saxena, K. Stowell, et al. 2021. Variant curation expert panel recommendations for RYR1 pathogenicity classifications in malignant hyperthermia susceptibility. *Genet. Med.* 23: 1288–1295. <https://doi.org/10.1038/s41436-021-01125-w>
- Jungbluth, H., H. Zhou, L. Hartley, B. Halliger-Keller, S. Messina, C. Longman, M. Brockington, S.A. Robb, V. Straub, T. Voit, et al. 2005. Minicore myopathy with ophthalmoplegia caused by mutations in the ryanodine receptor type 1 gene. *Neurology*. 65:1930–1935. <https://doi.org/10.1212/01.wnl.0000188870.37076.f2>
- Jungbluth, H. 2007. Central core disease. *Orphanet J. Rare Dis.* 2:25. <https://doi.org/10.1186/1750-1172-2-25>
- Jungbluth, H., C. Wallgren-Pettersson, and J. Laporte. 2008. Centronuclear (myotubular) myopathy. *Orphanet J. Rare Dis.* 3:26. <https://doi.org/10.1186/1750-1172-3-26>
- Jungbluth, H., S. Lillis, H. Zhou, S. Abbs, C. Sewry, M. Swash, and F. Muntoni. 2009. Late-onset axial myopathy with cores due to a novel heterozygous dominant mutation in the skeletal muscle ryanodine receptor (RYR1) gene. *Neuromuscul. Disord.* 19:344–347. <https://doi.org/10.1016/j.nmd.2009.02.005>
- Jungbluth, H., S. Treves, F. Zorzato, A. Sarkozy, J. Ochala, C. Sewry, R. Phadke, M. Gautel, and F. Muntoni. 2018. Congenital myopathies: Disorders of excitation-contraction coupling and muscle contraction. *Nat. Rev. Neurol.* 14:151–167. <https://doi.org/10.1038/nrneurol.2017.191>
- Kajino, S., K. Ishihara, K. Goto, K. Ishigaki, S. Noguchi, I. Nonaka, M. Osawa, I. Nishino, and Y.K. Hayashi. 2014. Congenital fiber type disproportion myopathy caused by LMNA mutations. *J. Neurol. Sci.* 340:94–98. <https://doi.org/10.1016/j.jns.2014.02.036>
- Kim, K.M., A. Rana, and C.Y. Park. 2019. Orail inhibitor STIM2 $\beta$  regulates myogenesis by controlling SOCE dependent transcriptional factors. *Sci. Rep.* 9:10794. <https://doi.org/10.1038/s41598-019-47259-5>
- Klein, A., H. Jungbluth, E. Clement, S. Lillis, S. Abbs, P. Munot, M. Pane, E. Wraige, U. Schara, V. Straub, et al. 2011. Muscle magnetic resonance imaging in congenital myopathies due to ryanodine receptor type 1 gene mutations. *Arch. Neurol.* 68:1171–1179. <https://doi.org/10.1001/archneurol.2011.188>
- Klein, A., S. Lillis, I. Munteanu, M. Scoto, H. Zhou, R. Quinlivan, V. Straub, A.Y. Manzur, H. Roper, P.-Y. Jeannet, et al. 2012. Clinical and genetic findings in a large cohort of patients with ryanodine receptor 1 gene-associated myopathies. *Hum. Mutat.* 33:981–988. <https://doi.org/10.1002/humu.22056>
- Knapp, M.L., D. Alansary, V. Poth, K. Förderer, F. Sommer, D. Zimmer, Y. Schwarz, N. Künzel, A. Kless, K. Machaca, et al. 2022. A longer isoform of Stim1 is a negative SOCE regulator but increases cAMP-modulated NFAT signaling. *EMBO Rep.* 23:e53135. <https://doi.org/10.15252/embr.202153135>
- Knuiman, G.J., B. Küsters, L. Eshuis, M. Snoeck, M. Lammens, L. Heytens, W. De Ridder, J. Baets, R.S. Scalco, R. Quinlivan, et al. 2019. The histopathological spectrum of malignant hyperthermia and rhabdomyolysis due to RYR1 mutations. *J. Neurol.* 266:876–887. <https://doi.org/10.1007/s00415-019-09209-z>
- Kobayashi, Y.M., B.A. Alseikhan, and L.R. Jones. 2000. Localization and characterization of the calsequestrin-binding domain of triadin 1. Evidence for a charged beta-strand in mediating the protein-protein interaction. *J. Biol. Chem.* 275:17639–17646. <https://doi.org/10.1074/jbc.M002091200>
- Koenig, X., R.H. Choi, and B.S. Launikonis. 2018. Store-operated Ca<sup>2+</sup> entry is activated by every action potential in skeletal muscle. *Commun. Biol.* 1: 31. <https://doi.org/10.1038/s42003-018-0033-7>

- Kondo, E., T. Nishimura, T. Kosho, Y. Inaba, S. Mitsuhashi, T. Ishida, A. Baba, K. Koike, I. Nishino, I. Nonaka, et al. 2012. Recessive RYR1 mutations in a patient with severe congenital nemaline myopathy with ophthalmoplegia identified through massively parallel sequencing. *Am. J. Med. Genet. A*. 158A:772–778. <https://doi.org/10.1002/ajmg.a.35243>
- Kraeva, N., E. Zvaritch, A.E. Rossi, S.A. Goonasekera, H. Zaid, W. Frodis, A. Kraev, R.T. Dirksen, D.H. MacLennan, and S. Riaz. 2013. Novel excitation-contraction uncoupled RYR1 mutations in patients with central core disease. *Neuromuscul. Disord.* 23:120–132. <https://doi.org/10.1016/j.nmd.2012.08.007>
- Kruijt, N., L.V. den Bersselaar, M. Snoeck, K. Kramers, S. Riaz, C. Bongers, S. Treves, H. Jungbluth, and N. Voermans. 2022. RYR1-Related rhabdomyolysis: A spectrum of hypermetabolic states due to ryanodine receptor dysfunction. *Curr. Pharmaceut. Des.* 28:2–14. <https://doi.org/10.2174/1381612827666210804095300>
- Kurebayashi, N., and Y. Ogawa. 2001. Depletion of Ca<sup>2+</sup> in the sarcoplasmic reticulum stimulates Ca<sup>2+</sup> entry into mouse skeletal muscle fibres. *J. Physiol.* 533:185–199. <https://doi.org/10.1111/j.1469-7793.2001.0185b.x>
- Kushnir, A., B. Wajsborg, and A.R. Marks. 2018. Ryanodine receptor dysfunction in human disorders. *Biochim. Biophys. Acta Mol. Cell Res.* 1865: 1687–1697. <https://doi.org/10.1016/j.bbamcr.2018.07.011>
- Kushnir, A., J.J. Todd, J.W. Witherspoon, Q. Yuan, S. Reiken, H. Lin, R.H. Munce, B. Wajsborg, Z. Melville, O.B. Clarke, et al. 2020. Intracellular calcium leak as a therapeutic target for RYR1-related myopathies. *Acta Neuropathol.* 139:1089–1104. <https://doi.org/10.1007/s00401-020-02150-w>
- Lacruz, R.S., and S. Peske. 2015. Diseases caused by mutations in ORAI1 and STIM1. *Ann. New York Acad. Sci.* 1356:45–79. <https://doi.org/10.1111/nyas.12938>
- Laing, N.G., N.F. Clarke, D.E. Dye, K. Liyanage, K.R. Walker, Y. Kobayashi, S. Shimakawa, T. Hagiwara, R. Ouvrier, J.C. Sparrow, et al. 2004. Actin mutations are one cause of congenital fibre type disproportion. *Ann. Neurol.* 56:689–694. <https://doi.org/10.1002/ana.20260>
- Laing, N.G., D.E. Dye, C. Wallgren-Pettersson, G. Richard, N. Monnier, S. Lillis, T.L. Winder, H. Lochmüller, C. Graziano, S. Mitrani-Rosenbaum, et al. 2009. Mutations and polymorphisms of the skeletal muscle alpha-actin gene (ACTA1). *Hum. Mutat.* 30:1267–1277. <https://doi.org/10.1002/humu.21059>
- Laitano, O., K.O. Murray, and L.R. Leon. 2020. Overlapping mechanisms of exertional heat stroke and malignant hyperthermia: Evidence vs. Conjecture. *Sports Med.* 50:1581–1592. <https://doi.org/10.1007/s40279-020-01318-4>
- Lambley, C.R., L. Pearce, C. Seng, A. Meizoso-Huesca, D.P. Singh, B.P. Frankish, V. Kaura, H.P. Lo, C. Ferguson, P.D. Allen, et al. 2021. Ryanodine receptor leak triggers fiber Ca<sup>2+</sup> redistribution to preserve force and elevate basal metabolism in skeletal muscle. *Sci. Adv.* 7:eabi7166. <https://doi.org/10.1126/sciadv.abi7166>
- Lanner, J.T., D.K. Georgiou, A.D. Joshi, and S.L. Hamilton. 2010. Ryanodine receptors: Structure, expression, molecular details, and function in calcium release. *Cold Spring Harbor Perspect. Biol.* 2:a003996. <https://doi.org/10.1101/cshperspect.a003996>
- Lanner, J.T., D.K. Georgiou, A. Dagnino-Acosta, A. Ainbinder, Q. Cheng, A.D. Joshi, Z. Chen, V. Yarotsky, J.M. Oakes, C.S. Lee, et al. 2012. AICAR prevents heat-induced sudden death in RyR1 mutant mice independent of AMPK activation. *Nat. Med.* 18:244–251. <https://doi.org/10.1038/nm.2598>
- Larach, M.G., A.R. Localio, G.C. Allen, M.A. Denborough, F.R. Ellis, G.A. Gronert, R.F. Kaplan, S.M. Muldoon, T.E. Nelson, and H. Ordning. 1994. A clinical grading scale to predict malignant hyperthermia susceptibility. *Anesthesiology*. 80:771–779. <https://doi.org/10.1097/0000542-199404000-00008>
- Larach, M.G., G.A. Gronert, G.C. Allen, B.W. Brandom, and E.B. Lehman. 2010. Clinical presentation, treatment, and complications of malignant hyperthermia in North America from 1987 to 2006. *Anesth. Analg.* 110: 498–507. <https://doi.org/10.1213/ANE.0b013e3181c6b9b2>
- Launikonis, B.S., and E. Ríos. 2007. Store-operated Ca<sup>2+</sup> entry during intracellular Ca<sup>2+</sup> release in mammalian skeletal muscle. *J. Physiol.* 583:81–97. <https://doi.org/10.1113/jphysiol.2007.135046>
- Launikonis, B.S., D.G. Stephenson, and O. Friedrich. 2009. Rapid Ca<sup>2+</sup> flux through the transverse tubular membrane, activated by individual action potentials in mammalian skeletal muscle. *J. Physiol.* 587:2299–2312. <https://doi.org/10.1113/jphysiol.2009.168682>
- Lawal, T.A., J.J. Todd, and K.G. Meilleur. 2018. Ryanodine receptor 1-related myopathies: Diagnostic and therapeutic approaches. *Neurotherapeutics*. 15:885–899. <https://doi.org/10.1007/s13311-018-00677-1>
- Lawal, T.A., J.J. Todd, J.W. Witherspoon, C.G. Bönnemann, J.J. Dowling, S.L. Hamilton, K.G. Meilleur, and R.T. Dirksen. 2020. Ryanodine receptor 1-related disorders: An historical perspective and proposal for a unified nomenclature. *Skelet. Muscle*. 10:32. <https://doi.org/10.1186/s13395-020-00243-4>
- Lawlor, M.W., E.T. Dechene, E. Roumm, A.S. Geggel, B. Moghadaszadeh, and A.H. Beggs. 2010. Mutations of tropomyosin 3 (TPM3) are common and associated with type 1 myofiber hypotrophy in congenital fiber type disproportion. *Hum. Mutat.* 31:176–183. <https://doi.org/10.1002/humu.21157>
- Lee, H.G., H. Kang, D.H. Kim, and W.J. Park. 2001. Interaction of HRC (histidine-rich Ca[2+]-binding protein) and triadin in the lumen of sarcoplasmic reticulum. *J. Biol. Chem.* 276:39533–39538. <https://doi.org/10.1074/jbc.M010664200>
- Lee, K.P., J.P. Yuan, I. So, P.F. Worley, and S. Muallem. 2010. STIM1-dependent and STIM1-independent function of transient receptor potential canonical (TRPC) channels tunes their store-operated mode. *J. Biol. Chem.* 285:38666–38673. <https://doi.org/10.1074/jbc.M110.155036>
- Lee, C.S., A.D. Hanna, H. Wang, A. Dagnino-Acosta, A.D. Joshi, M. Knoblauch, Y. Xia, D.K. Georgiou, J. Xu, C. Long, et al. 2017. A chemical chaperone improves muscle function in mice with a RyR1 mutation. *Nat. Commun.* 8:14659. <https://doi.org/10.1038/ncomms14659>
- Lewis, R.S. 2020. Store-operated calcium channels: From function to structure and back again. *Cold Spring Harbor Perspect. Biol.* 12:a035055. <https://doi.org/10.1101/cshperspect.a035055>
- Li, T., E.A. Finch, V. Graham, Z.-S. Zhang, J.-D. Ding, J. Burch, M. Oh-hora, and P. Rosenberg. 2012. STIM1-Ca(2+) signaling is required for the hypertrophic growth of skeletal muscle in mice. *Mol. Cell. Biol.* 32: 3009–3017. <https://doi.org/10.1128/MCB.06599-11>
- Li, L., S. Mirza, S.J. Richardson, E.M. Gallant, C. Thekkedam, S.M. Pace, F. Zorzo, D. Liu, N.A. Beard, and A.F. Dulhunty. 2015. A new cytoplasmic interaction between junctin and ryanodine receptor Ca<sup>2+</sup> release channels. *J. Cell Sci.* 128:951–963. <https://doi.org/10.1242/jcs.160689>
- Liewluck, T., M. Milone, X. Tian, A.G. Engel, N.P. Staff, and L.-J. Wong. 2016. Adult-onset respiratory insufficiency, scoliosis, and distal joint hyperlaxity in patients with multiminicore disease due to novel Megf10 mutations. *Muscle Nerve*. 53:984–988. <https://doi.org/10.1002/mus.25054>
- Lilliu, E., K. Hilber, B.S. Launikonis, and X. Koenig. 2020. Phasic store-operated Ca<sup>2+</sup> entry during excitation-contraction coupling in skeletal muscle fibers from exercised mice. *Front. Physiol.* 11:597647. <https://doi.org/10.3389/fphys.2020.597647>
- Lilliu, E., S. Koenig, X. Koenig, and M. Frieden. 2021. Store-operated calcium entry in skeletal muscle: What makes it different?. *Cells*. 10:2356. <https://doi.org/10.3390/cells10092356>
- Lionello, V.M., C. Kretz, E. Edelweiss, C. Crucifix, R. Gómez-Oca, N. Mes-saddeq, S. Buono, P. Koebel, X. Massana Muñoz, N. Diedhiou, et al. 2022. BIN1 modulation in vivo rescues dynamin-related myopathy. *Proc. Natl. Acad. Sci. USA*. 119:e2109576119. <https://doi.org/10.1073/pnas.2109576119>
- Liou, J., M.L. Kim, W.D. Heo, J.T. Jones, J.W. Myers, J.E. Ferrell, and T. Meyer. 2005. STIM is a Ca<sup>2+</sup> sensor essential for Ca<sup>2+</sup>-store-depletion-triggered Ca<sup>2+</sup> influx. *Curr. Biol.* 15:1235–1241. <https://doi.org/10.1016/j.cub.2005.05.055>
- Litjens, T., M.L. Harland, M.L. Roberts, G.J. Barritt, and G.Y. Rychkov. 2004. Fast Ca(2+)-dependent inactivation of the store-operated Ca<sup>2+</sup> current (ISOC) in liver cells: A role for calmodulin. *J. Physiol.* 558:85–97. <https://doi.org/10.1113/jphysiol.2004.065870>
- Loke, J., and D.H. MacLennan. 1998. Malignant hyperthermia and central core disease: Disorders of Ca<sup>2+</sup> release channels. *Am. J. Med.* 104:470–486. [https://doi.org/10.1016/s0002-9343\(98\)00108-9](https://doi.org/10.1016/s0002-9343(98)00108-9)
- Lopez, J.J., L. Albarran, L.J. Gómez, T. Smani, G.M. Salido, and J.A. Rosado. 2016. Molecular modulators of store-operated calcium entry. *Biochim. Biophys. Acta*. 1863:2037–2043. <https://doi.org/10.1016/j.bbamcr.2016.04.024>
- Lopez, J.R., V. Kaura, C.P. Diggle, P.M. Hopkins, and P.D. Allen. 2018. Malignant hyperthermia, environmental heat stress, and intracellular calcium dysregulation in a mouse model expressing the p.G2435R variant of RYR1. *Br. J. Anaesth.* 121:953–961. <https://doi.org/10.1016/j.bja.2018.07.008>
- Løseth, S., N.C. Voermans, T. Torbergesen, S. Lillis, C. Jonsrud, S. Lindal, E.-J. Kamsteeg, M. Lammens, M. Broman, G. Dekomien, et al. 2013. A novel late-onset axial myopathy associated with mutations in the skeletal muscle ryanodine receptor (RYR1) gene. *J. Neurol.* 260:1504–1510. <https://doi.org/10.1007/s00415-012-6817-7>

- Loy, R.E., M. Orynbayev, L. Xu, Z. Andronache, S. Apostol, E. Zvaritch, D.H. MacLennan, G. Meissner, W. Melzer, and R.T. Dirksen. 2011. Muscle weakness in Ryr1I4895T/WT knock-in mice as a result of reduced ryanodine receptor  $\text{Ca}^{2+}$  ion permeation and release from the sarcoplasmic reticulum. *J. Gen. Physiol.* 137:43–57. <https://doi.org/10.1085/jgp.201010523>
- Luo, S., Q. Li, J. Lin, Q. Murphy, I. Marty, Y. Zhang, S. Kazerounian, and P.B. Agrawal. 2021. SPEG binds with desmin and its deficiency causes defects in triad and focal adhesion proteins. *Hum. Mol. Genet.* 29: 3882–3891. <https://doi.org/10.1093/hmg/ddaa276>
- Lynch, P.J., J. Tong, M. Lehan, A. Mallet, L. Giblin, J.J. Heffron, P. Vaughan, G. Zafra, D.H. MacLennan, and T.V. McCarthy. 1999. A mutation in the transmembrane/luminal domain of the ryanodine receptor is associated with abnormal  $\text{Ca}^{2+}$  release channel function and severe central core disease. *Proc. Natl. Acad. Sci. USA.* 96:4164–4169. <https://doi.org/10.1073/pnas.96.7.4164>
- MacLennan, D.H., and M.S. Phillips. 1992. Malignant hyperthermia. *Science.* 256:789–794. <https://doi.org/10.1126/science.1589759>
- Maggi, L., M. Scoto, S. Cirak, S.A. Robb, A. Klein, S. Lillis, T. Cullup, L. Feng, A.Y. Manzur, C.A. Sewry, et al. 2013. Congenital myopathies—clinical features and frequency of individual subtypes diagnosed over a 5-year period in the United Kingdom. *Neuromuscul. Disord.* 23:195–205. <https://doi.org/10.1016/j.nmd.2013.01.004>
- Maggi, L., S. Bonanno, C. Altamura, and J.F. Desaphy. 2021. Ion Channel gene mutations causing skeletal muscle disorders: Pathomechanisms and opportunities for therapy. *Cells.* 10:1521. <https://doi.org/10.3390/cells10061521>
- Mammucari, C., A. Raffaello, D. Vecellio Reane, G. Gherardi, A. De Mario, and R. Rizzuto. 2018. Mitochondrial calcium uptake in organ physiology: From molecular mechanism to animal models. *Pflugers Arch.* 470: 1165–1179. <https://doi.org/10.1007/s00424-018-2123-2>
- Manno, C., L. Figueroa, L. Royer, S. Pouvreau, C.S. Lee, P. Volpe, A. Nori, J. Zhou, G. Meissner, S.L. Hamilton, and E. Ríos. 2013. Altered  $\text{Ca}^{2+}$  concentration, permeability and buffering in the myofibre  $\text{Ca}^{2+}$  store of a mouse model of malignant hyperthermia. *J. Physiol.* 591:4439–4457. <https://doi.org/10.1113/jphysiol.2013.259572>
- Manno, C., L.C. Figueroa, D. Gillespie, R. Fitts, C. Kang, C. Franzini-Armstrong, and E. Ríos. 2017. Calsequestrin depolymerizes when calcium is depleted in the sarcoplasmic reticulum of working muscle. *Proc. Natl. Acad. Sci. USA.* 114:E638–E647. <https://doi.org/10.1073/pnas.1620265114>
- Marttila, M., V.-L. Lehtokari, S. Marston, T.A. Nyman, C. Barnerias, A.H. Beggs, E. Bertini, O. Ceyhan-Birsoy, P. Cintas, M. Gerard, et al. 2014. Mutation update and genotype-phenotype correlations of novel and previously described mutations in TPM2 and TPM3 causing congenital myopathies. *Hum. Mutat.* 35:779–790. <https://doi.org/10.1002/humu.22554>
- Marty, I. 2015. Triadin regulation of the ryanodine receptor complex. *J. Physiol.* 593:3261–3266. <https://doi.org/10.1113/jphysiol.2014.281147>
- Matsumoto, A., H. Tsuda, S. Furui, M. Kawada-Nagashima, T. Anzai, M. Seki, K. Watanabe, K. Muramatsu, H. Osaka, S. Iwamoto, et al. 2022. A case of congenital fiber-type disproportion syndrome presenting dilated cardiomyopathy with ACTA1 mutation. *Mol. Genet. Genomic Med.* 27:e2008. <https://doi.org/10.1002/mgg3.2008>
- Mauri, E., D. Piga, S. Pagliarini, F. Magri, A. Manini, M. Sciacco, M. Ripolone, L. Napoli, L. Borellini, C. Cinnante, et al. 2021. CACNA1S mutation associated with a case of juvenile-onset congenital myopathy. *J. Neurol. Sci.* 431:120047. <https://doi.org/10.1016/j.jns.2021.120047>
- Maus, M., M. Cuk, B. Patel, J. Lian, M. Ouimet, U. Kaufmann, J. Yang, R. Horvath, H.T. Hornig-Do, Z.M. Chrzanoska-Lightowlers, et al. 2017. Store-operated  $\text{Ca}^{2+}$  entry controls induction of lipolysis and the transcriptional reprogramming to lipid metabolism. *Cell Metab.* 25:698–712. <https://doi.org/10.1016/j.cmet.2016.12.021>
- McCarl, C.-A., C. Picard, S. Khalil, T. Kawasaki, J. Röther, A. Papolos, J. Kutok, C. Hivroz, F. Ledeist, K. Plogmann, et al. 2009. ORAI1 deficiency and lack of store-operated  $\text{Ca}^{2+}$  entry cause immunodeficiency, myopathy, and ectodermal dysplasia. *J. Allergy Clin. Immunol.* 124:1311–1318.e7. <https://doi.org/10.1016/j.jaci.2009.10.007>
- Meissner, G., E. Darling, and J. Eveleth. 1986. Kinetics of rapid  $\text{Ca}^{2+}$  release by sarcoplasmic reticulum. Effects of  $\text{Ca}^{2+}$ ,  $\text{Mg}^{2+}$ , and adenine nucleotides. *Biochemistry.* 25:236–244. <https://doi.org/10.1021/bi00349a033>
- Meissner, G., and X. Lu. 1995. Dihydropyridine receptor-ryanodine receptor interactions in skeletal muscle excitation-contraction coupling. *Biosci. Rep.* 15:399–408. <https://doi.org/10.1007/BF01788371>
- Michelucci, A., S. Boncompagni, M. Canato, C. Reggiani, and F. Protasi. 2017a. Estrogens protect calsequestrin-1 knockout mice from lethal hyperthermic episodes by reducing oxidative stress in muscle. *Oxid. Med. Cell. Longev.* 2017:6936897. <https://doi.org/10.1155/2017/6936897>
- Michelucci, A., A. De Marco, F.A. Guarnier, F. Protasi, and S. Boncompagni. 2017b. Antioxidant treatment reduces formation of structural cores and improves muscle function in RYR1Y522S/WT mice. *Oxid. Med. Cell. Longev.* 2017:6792694. <https://doi.org/10.1155/2017/6792694>
- Michelucci, A., C. Paolini, S. Boncompagni, M. Canato, C. Reggiani, and F. Protasi. 2017c. Strenuous exercise triggers a life-threatening response in mice susceptible to malignant hyperthermia. *FASEB J.* 31:3649–3662. <https://doi.org/10.1096/fj.201601292R>
- Michelucci, A., M. García-Castañeda, S. Boncompagni, and R.T. Dirksen. 2018. Role of STIM1/ORAI1-mediated store-operated  $\text{Ca}^{2+}$  entry in skeletal muscle physiology and disease. *Cell Calcium.* 76:101–115. <https://doi.org/10.1016/j.ceca.2018.10.004>
- Michelucci, A., S. Boncompagni, L. Pietrangeli, M. García-Castañeda, T. Takano, S. Malik, R.T. Dirksen, and F. Protasi. 2019. Transverse tubule remodeling enhances Orail-dependent  $\text{Ca}^{2+}$  entry in skeletal muscle. *Elife.* 8:e47576. <https://doi.org/10.7554/eLife.47576>
- Michelucci, A., S. Boncompagni, L. Pietrangeli, T. Takano, F. Protasi, and R.T. Dirksen. 2020. Pre-assembled  $\text{Ca}^{2+}$  entry units and constitutively active  $\text{Ca}^{2+}$  entry in skeletal muscle of calsequestrin-1 knockout mice. *J. Gen. Physiol.* 152:e202012617. <https://doi.org/10.1085/jgp.202012617>
- Miederer, A.-M., D. Alansary, G. Schwär, P.-H. Lee, M. Jung, V. Helms, and B.A. Niemeyer. 2015. A STIM2 splice variant negatively regulates store-operated calcium entry. *Nat. Commun.* 6:6899. <https://doi.org/10.1038/ncomms7899>
- Misceo, D., A. Holmgren, W.E. Louch, P.A. Holme, M. Mizobuchi, R.J. Morales, A.M. De Paula, A. Stray-Pedersen, L. Lyle, B. Dalhus, et al. 2014. A dominant STIM1 mutation causes stormorken syndrome. *Hum. Mutat.* 35:556–564. <https://doi.org/10.1002/humu.22544>
- Molenaar, J.P., N.C. Voermans, B.J. van Hoeve, E.J. Kamsteeg, L.A. Kluijtmans, B. Kusters, H.J. Jungbluth, and B.G. van Engelen. 2014. Fever-induced recurrent rhabdomyolysis due to a novel mutation in the ryanodine receptor type 1 gene. *Intern. Med. J.* 44:819–820. <https://doi.org/10.1111/imj.12498>
- Monnier, N., V. Procaccio, P. Stieglitz, and J. Lunardi. 1997. Malignant hyperthermia susceptibility is associated with a mutation of the alpha 1-subunit of the human dihydropyridine-sensitive L-type voltage-dependent calcium-channel receptor in skeletal muscle. *Am. J. Hum. Genet.* 60:1316–1325. <https://doi.org/10.1086/515454>
- Monnier, N., N.B. Romero, J. Lerala, Y. Nivoche, D. Qi, D.H. MacLennan, M. Fardeau, and J. Lunardi. 2000. An autosomal dominant congenital myopathy with cores and rods is associated with a neomutation in the RYR1 gene encoding the skeletal muscle ryanodine receptor. *Hum. Mol. Genet.* 9:2599–2608. <https://doi.org/10.1093/hmg/9.18.2599>
- Monnier, N., N.B. Romero, J. Lerala, P. Landrieu, Y. Nivoche, M. Fardeau, and J. Lunardi. 2001. Familial and sporadic forms of central core disease are associated with mutations in the C-terminal domain of the skeletal muscle ryanodine receptor. *Hum. Mol. Genet.* 10:2581–2592. <https://doi.org/10.1093/hmg/10.22.2581>
- Monnier, N., I. Marty, J. Faure, C. Castiglioni, C. Desnuelle, S. Sacconi, B. Estournet, A. Ferreira, N. Romero, A. Laquerriere, et al. 2008. Null mutations causing depletion of the type 1 ryanodine receptor (RYR1) are commonly associated with recessive structural congenital myopathies with cores. *Hum. Mutat.* 29:670–678. <https://doi.org/10.1002/humu.20696>
- Moreno, C.A.M., E.P. Estephan, A. Fappi, S. Monges, F. Lubieniecki, O. Lopes Abath Neto, U.C. Reed, S. Donkervoort, M.B. Harms, C. Bonnemant, and E. Zanoteli. 2020. Congenital fiber type disproportion caused by TPM3 mutation: A report of two atypical cases. *Neuromuscul. Disord.* 30: 54–58. <https://doi.org/10.1016/j.nmd.2019.11.001>
- Morin, G., V. Biancalana, A. Echaniz-Laguna, J.-B. Noury, X. Lornage, M. Moggio, M. Ripolone, R. Violano, P. Marcorelles, D. Maréchal, et al. 2020. Tubular aggregate myopathy and stormorken syndrome: Mutation spectrum and genotype/phenotype correlation. *Hum. Mutat.* 41: 17–37. <https://doi.org/10.1002/humu.23899>
- Muallem, S. 2007. Calcium signaling: Pyruvate and CRAC meet at the crossroads. *Curr. Biol.* 17:R549–R551. <https://doi.org/10.1016/j.cub.2007.05.037>
- Muelas, N., P. Hackman, H. Luque, M. Garcés-Sánchez, I. Azorín, T. Suominen, T. Sevilla, F. Mayordomo, L. Gómez, P. Martí, et al. 2010. MYH7 gene tail mutation causing myopathic profiles beyond laing distal myopathy. *Neurology.* 75:732–741. <https://doi.org/10.1212/WNL.0b013e31818ee4d5>
- Mullins, F.M., C.Y. Park, R.E. Dolmetsch, and R.S. Lewis. 2009. STIM1 and calmodulin interact with Orail to induce  $\text{Ca}^{2+}$ -dependent inactivation of



- CRAC channels. *Proc. Natl. Acad. Sci. USA*. 106:15495–15500. <https://doi.org/10.1073/pnas.0906781106>
- Nakada, T., T. Kashiwara, M. Komatsu, K. Kojima, T. Takeshita, and M. Yamada. 2018. Physical interaction of junctophilin and the CaV1.1 C terminus is crucial for skeletal muscle contraction. *Proc. Natl. Acad. Sci. USA*. 115:4507–4512. <https://doi.org/10.1073/pnas.1716649115>
- Nelson, M.E., B.L. Parker, J.G. Burchfield, N.J. Hoffman, E.J. Needham, K.C. Cooke, T. Naim, L. Sylow, N.X. Ling, D. Francis, et al. 2019. Phosphoproteomics reveals conserved exercise-stimulated signaling and AMPK regulation of store-operated calcium entry. *EMBO J.* 39:e104246. <https://doi.org/10.15252/embj.2019104246>
- Nesin, V., G. Wiley, M. Kousi, E.-C. Ong, T. Lehmann, D.J. Nicholl, M. Suri, N. Shahrizaila, N. Katsanis, P.M. Gaffney, et al. 2014. Activating mutations in STIM1 and ORAI1 cause overlapping syndromes of tubular myopathy and congenital myositis. *Proc. Natl. Acad. Sci. USA*. 111:4197–4202. <https://doi.org/10.1073/pnas.1312520111>
- Nicot, A.-S., A. Toussaint, V. Tosch, C. Kretz, C. Wallgren-Pettersson, E. Iwarsson, H. Kingston, J.-M. Garnier, V. Biancalana, A. Oldfors, et al. 2007. Mutations in amphiphysin 2 (BIN1) disrupt interaction with dynamin 2 and cause autosomal recessive centronuclear myopathy. *Nat. Genet.* 39:1134–1139. <https://doi.org/10.1038/ng2086>
- Nilipour, Y., S. Nafissi, A.E. Tjust, G. Ravenscroft, H. Hossein Nejad Nedai, R.L. Taylor, V. Varasteh, F. Pedrosa Domellöf, M. Zangi, S.H. Tonekaboni, et al. 2018. Ryanodine receptor type 3 (RYR3) as a novel gene associated with a myopathy with nemaline bodies. *Eur. J. Neurol.* 25: 841–847. <https://doi.org/10.1111/ene.13607>
- Ogasawara, M., and I. Nishino. 2021. A review of core myopathy: Central core disease, multiminicore disease, dusty core disease, and core-rod myopathy. *Neuromuscul. Disord.* 31:968–977. <https://doi.org/10.1016/j.nmd.2021.08.015>
- Ogasawara, M., M. Ogawa, I. Nonaka, S. Hayashi, S. Noguchi, and I. Nishino. 2020. Evaluation of the Core Formation process in congenital neuromuscular disease with uniform type 1 fiber and central core disease. *J. Neuropathol. Exp. Neurol.* 79:1370–1375. <https://doi.org/10.1093/jnen/lnaa104>
- Oh-Hora, M., M. Yamashita, P.G. Hogan, S. Sharma, E. Lamperti, W. Chung, M. Prakriya, S. Feske, and A. Rao. 2008. Dual functions for the endoplasmic reticulum calcium sensors STIM1 and STIM2 in T cell activation and tolerance. *Nat. Immunol.* 9:432–443. <https://doi.org/10.1038/nri574>
- Ortolano, S., R. Tarrío, P. Blanco-Arias, S. Teixeira, F. Rodríguez-Trelles, M. García-Murias, V. Delague, N. Lévy, J.M. Fernández, B. Quintáns, et al. 2011. A novel MYH7 mutation links congenital fiber type disproportion and myosin storage myopathy. *Neuromuscul. Disord.* 21:254–262. <https://doi.org/10.1016/j.nmd.2010.12.011>
- Osseni, A., M. Sébastien, O. Sarraut, M. Baudet, Y. Couté, J. Fauré, A. Fourest-Lieuvin, and I. Marty. 2016. Triadin and CLIMP-63 form a link between triads and microtubules in muscle cells. *J. Cell Sci.* 129:3744–3755. <https://doi.org/10.1016/j.jcs.188862>
- Pajusalu, S., I. Talvik, k. Noormets, T. Talvik, H. Pöder, K. Joost, S. Puusepp, A. Piirsoo, W. Stenzel, H.H. Goebel, et al. 2016. De novo exonic mutation in MYH7 gene leading to exon skipping in a patient with early onset muscular weakness and fiber-type disproportion. *Neuromuscul. Disord.* 26:236–239. <https://doi.org/10.1016/j.nmd.2015.11.011>
- Palty, R., A. Raveh, I. Kaminsky, R. Meller, and E. Reuveny. 2012. SARAF inactivates the store operated calcium entry machinery to prevent excess calcium refilling. *Cell.* 149:425–438. <https://doi.org/10.1016/j.cell.2012.01.055>
- Parekh, A.B. 2008. Mitochondrial regulation of store-operated CRAC channels. *Cell Calcium.* 44:6–13. <https://doi.org/10.1016/j.ceca.2007.12.006>
- Parekh, A.B. 2017. Regulation of CRAC channels by Ca<sup>2+</sup>-dependent inactivation. *Cell Calcium.* 63:20–23. <https://doi.org/10.1016/j.ceca.2016.12.003>
- Park, H., S. Wu, A.K. Dunker, and C. Kang. 2003. Polymerization of calsequestrin. Implications for Ca<sup>2+</sup> regulation. *J. Biol. Chem.* 278:16176–16182. <https://doi.org/10.1074/jbc.M300120200>
- Park, S., T.L. Scheffler, A.M. Gunawan, H. Shi, C. Zeng, K.M. Hannon, A.L. Grant, and D.E. Gerrard. 2009. Chronic elevated calcium blocks AMPK-induced GLUT-4 expression in skeletal muscle. *Am. J. Physiol. Cell Physiol.* 296:C106–C115. <https://doi.org/10.1152/ajpcell.00114.2008>
- Parker, R., A.H. Schiemann, E. Langton, T. Bulger, N. Pollock, A. Bjorksten, R. Gillies, D. Hutchinson, R. Roxburgh, and K.M. Stowell. 2017. Functional characterization of C-terminal ryanodine receptor 1 variants associated with central core disease or malignant hyperthermia. *J. Neuromuscul. Dis.* 4:147–158. <https://doi.org/10.3233/JND-170210>
- Pearce, L., A. Meizoso-Huesca, C. Seng, C.R. Lamboley, D.P. Singh, and B.S. Launikonis. 2022. Ryanodine receptor activity and store-operated Ca<sup>2+</sup> entry: Critical regulators of Ca<sup>2+</sup> content and function in skeletal muscle. *J. Physiol.* <https://doi.org/10.1113/jp279512>
- Pecche, G.A., C. Spiegelhalter, R. Silva-Rojas, J. Laporte, and J. Böhm. 2020. Functional analyses of STIM1 mutations reveal a common pathomechanism for tubular aggregate myopathy and Stormorken syndrome. *Neuropathol.* 40:559–569. <https://doi.org/10.1111/neup.12692>
- Pelletier, L., A. Petiot, J. Brocard, B. Giannellini, D. Giovannini, C. Sanchez, L. Travard, M. Chivet, M. Beaufils, C. Kutchukian, et al. 2020. In vivo RyR1 reduction in muscle triggers a core-like myopathy. *Acta Neuropathol. Commun.* 8:192. <https://doi.org/10.1186/s40478-020-01068-4>
- Perni, S., M. Lavorato, and K.G. Beam. 2017. De novo reconstitution reveals the proteins required for skeletal muscle voltage-induced Ca<sup>2+</sup> release. *Proc. Natl. Acad. Sci. USA*. 114:13822–13827. <https://doi.org/10.1073/pnas.1716461115>
- Peter, B.J., H.M. Kent, I.G. Mills, Y. Vallis, P.J.G. Butler, P.R. Evans, and H.T. McMahon. 2004. BAR domains as sensors of membrane curvature: The amphiphysin BAR structure. *Science*. 303:495–499. <https://doi.org/10.1126/science.1092586>
- Petit, N., A. Lescure, M. Rederstorff, A. Krol, B. Moghadaszadeh, U.M. Wewer, and P. Guicheney. 2003. Selenoprotein N: An endoplasmic reticulum glycoprotein with an early developmental expression pattern. *Hum. Mol. Genet.* 12:1045–1053. <https://doi.org/10.1093/hmg/ddg115>
- Phimister, A.J., J. Lango, E.H. Lee, M.A. Ernst-Russell, H. Takeshima, J. Ma, P.D. Allen, and I.N. Pessah. 2007. Conformation-dependent stability of junctophilin 1 (JP1) and ryanodine receptor type 1 (RyR1) channel complex is mediated by their hyper-reactive thiols. *J. Biol. Chem.* 282: 8667–8677. <https://doi.org/10.1074/jbc.M609936200>
- Pinto, M.M., S. Monges, E. Malfatti, F. Lubieniecki, X. Lornage, L. Alias, C. Labasse, A. Madelaine, M. Fardeau, J. Laporte, et al. 2019. Sarcomeric disorganization and nemaline bodies in muscle biopsies of patients with EXOSC3-related type 1 pontocerebellar hypoplasia. *Muscle Nerve*. 59: 137–141. <https://doi.org/10.1002/mus.26305>
- Polster, A., B.R. Nelson, E.N. Olson, and K.G. Beam. 2016. Stac3 has a direct role in skeletal muscle-type excitation-contraction coupling that is disrupted by a myopathy-causing mutation. *Proc. Natl. Acad. Sci. USA*. 113:10986–10991. <https://doi.org/10.1073/pnas.1612441113>
- Protasi, F., C. Paolini, M. Canato, C. Reggiani, and M. Quarta. 2011. Lessons from calsequestrin-1 ablation in vivo: Much more than a Ca(2+) buffer after all. *J. Muscle Res. Cell Motil.* 32:257–270. <https://doi.org/10.1007/s10974-011-9277-2>
- Putney, J.W. 1986. A model for receptor-regulated calcium entry. *Cell Calcium.* 7:1–12. [https://doi.org/10.1016/0143-4160\(86\)90026-6](https://doi.org/10.1016/0143-4160(86)90026-6)
- Ramesh, G., L. Jarzembowski, Y. Schwarz, V. Poth, M. Konrad, M.L. Knapp, G. Schwär, A.A. Lauer, M.O.W. Grimm, D. Alansary, et al. 2021. A short isoform of STIM1 confers frequency-dependent synaptic enhancement. *Cell Rep.* 34:108844. <https://doi.org/10.1016/j.celrep.2021.108844>
- Rana, A., M. Yen, A.M. Sadaghiani, S. Malmersjö, C.Y. Park, R.E. Dolmetsch, and R.S. Lewis. 2015. Alternative splicing converts STIM2 from an activator to an inhibitor of store-operated calcium channels. *J. Cell Biol.* 209:653–669. <https://doi.org/10.1083/jcb.201412060>
- Rathner, P., M. Fahrner, L. Cerofolini, H. Grabmayr, F. Horvath, H. Kroboth, A. Gupta, E. Ravera, M. Fragai, M. Bechmann, et al. 2021. Interhelical interactions within the STIM1 CC1 domain modulate CRAC channel activation. *Nat. Chem. Biol.* 17:196–204. <https://doi.org/10.1038/s41589-020-00672-8>
- Ravenscroft, G., J.S. Clayton, F. Faiz, P. Sivadurai, D. Milnes, R. Cincotta, P. Moon, B. Kamien, M. Edwards, M. Delatycki, et al. 2021. Neurogenetic fetal akinesia and arthrogryposis: Genetics, expanding genotype-phenotypes and functional genomics. *J. Med. Genet.* 58:609–618. <https://doi.org/10.1136/jmedgenet-2020-106901>
- Riaz, S., N. Kraeva, and P.M. Hopkins. 2018. Malignant hyperthermia in the post-genomics era: New perspectives on an old concept. *Anesthesiology*. 128:168–180. <https://doi.org/10.1097/ALN.0000000000001878>
- Rokach, O., M. Sekulic-Jablanovic, N. Voermans, J. Wilmshurst, K. Pillay, L. Heytens, H. Zhou, F. Muntoni, M. Gautel, Y. Nevo, et al. 2015. Epigenetic changes as a common trigger of muscle weakness in congenital myopathies. *Hum. Mol. Genet.* 24:4636–4647. <https://doi.org/10.1093/hmg/ddv195>
- Romero, N.B., and M. Bitoun. 2011. Centronuclear myopathies. *Semin. Pediatr. Neurol.* 18:250–256. <https://doi.org/10.1016/j.spen.2011.10.006>
- Romero, N.B., and N.F. Clarke. 2013. Congenital myopathies. *Handb. Clin. Neurol.* 113:1321–1336. <https://doi.org/10.1016/B978-0-444-59565-2.00004-6>
- Romero, N.B., T. Xie, E. Malfatti, U. Schaeffer, J. Böhm, B. Wu, F. Xu, S. Boucebc, S. Mathis, J.-P. Neau, et al. 2014. Autosomal dominant



- eccentric core disease caused by a heterozygous mutation in the MYH7 gene. *J. Neurol. Neurosurg. Psychiatr.* 85:1149–1152. <https://doi.org/10.1136/jnnp-2013-306754>
- Roos, J., P.J. DiGregorio, A.V. Yeromin, K. Ohlsen, M. Lioudyno, S. Zhang, O. Saffrina, J.A. Kozak, S.L. Wagner, M.D. Cahalan, et al. 2005. STIM1, an essential and conserved component of store-operated  $\text{Ca}^{2+}$  channel function. *J. Cell Biol.* 169:435–445. <https://doi.org/10.1083/jcb.200502019>
- Rosenberg, H., N. Pollock, A. Schiemann, T. Bulger, and K. Stowell. 2015. Malignant hyperthermia: A review. *Orphanet J. Rare Dis.* 10:93. <https://doi.org/10.1186/s13023-015-0310-1>
- Rossi, D., and V. Sorrentino. 2002. Molecular genetics of ryanodine receptors  $\text{Ca}^{2+}$ -release channels. *Cell Calcium.* 32:307–319. <https://doi.org/10.1016/S0143416002001987>
- Rossi, D., C. Bencini, M. Maritati, F. Benini, S. Lorenzini, E. Pierantozzi, A.M. Scarcella, C. Paolini, F. Protasi, and V. Sorrentino. 2014. Distinct regions of triadin are required for targeting and retention at the junctional domain of the sarcoplasmic reticulum. *Biochem. J.* 458:407–417. <https://doi.org/10.1042/BJ20130719>
- Rossi, D., A.M. Scarcella, E. Liguori, S. Lorenzini, E. Pierantozzi, C. Kutchukian, V. Jacquemond, M. Messa, P. De Camilli, and V. Sorrentino. 2019a. Molecular determinants of homo- and heteromeric interactions of Junctophilin-1 at triads in adult skeletal muscle fibers. *Proc. Natl. Acad. Sci. USA.* 116:15716–15724. <https://doi.org/10.1073/pnas.1820980116>
- Rossi, A., P. Pizzo, and R. Filadi. 2019b. Calcium, mitochondria and cell metabolism: A functional triangle in bioenergetics. *Biochim. Biophys. Acta Mol. Cell Res.* 1866:1068–1078. <https://doi.org/10.1016/j.bbmr.2018.10.016>
- Rossi, D., A. Gamberucci, E. Pierantozzi, C. Amato, L. Migliore, and V. Sorrentino. 2021. Calsequestrin, a key protein in striated muscle health and disease. *J. Muscle Res. Cell Motil.* 42:267–279. <https://doi.org/10.1007/s10974-020-09583-6>
- Rossi, D., E. Pierantozzi, D.O. Amadun, S. Buonocore, E.M. Rubino, and V. Sorrentino. 2022a. The sarcoplasmic reticulum of skeletal muscle cells: A labyrinth of membrane contact sites. *Biomolecules.* 2312:488. <https://doi.org/10.3390/biom12040488>
- Rossi, D., S. Lorenzini, E. Pierantozzi, F. Van Petegem, D. Osamwonyi Amadun, and V. Sorrentino. 2022b. Multiple regions within junctin drive its interaction with calsequestrin-1 and its localization to triads in skeletal muscle. *J. Cell Sci.* 135:jcs259185. <https://doi.org/10.1242/jcs.259185>
- Royer, B., K. Hnia, C. Gavrilidis, H. Tronchère, V. Tosch, and J. Laporte. 2013. The myotubularin-amphiphysin 2 complex in membrane tubulation and centronuclear myopathies. *EMBO Rep.* 14:907–915. <https://doi.org/10.1038/embor.2013.119>
- Rufenach, B., and F. Van Petegem. 2021. Structure and function of STAC proteins: Calcium channel modulators and critical components of muscle excitation-contraction coupling. *J. Biol. Chem.* 297:100874. <https://doi.org/10.1016/j.jbc.2021.100874>
- Ruiz, A., S. Benucci, U. Duthaler, C. Bachmann, M. Franchini, F. Noreen, L. Pietrangeli, F. Protasi, S. Treves, and F. Zorzato. 2022. Improvement of muscle strength in a mouse model for congenital myopathy treated with HDAC and DNA methyltransferase inhibitors. *Elife.* 11:e73718. <https://doi.org/10.7554/eLife.73718>
- Sallinger, M., A. Tiffner, T. Schmidt, D. Bonhenry, L. Waldherr, I. Frischauf, V. Lunz, I. Derler, R. Schober, and R. Schindl. 2020. Luminal STIM1 mutants that cause tubular aggregate myopathy promote autophagic processes. *Int. J. Mol. Sci.* 21:4410. <https://doi.org/10.3390/ijms21124410>
- Salviati, G., S. Pierobon-Bormioli, R. Betto, E. Damiani, C. Angelini, S.P. Ringel, S. Salvatori, and A. Margreth. 1985. Tubular aggregates: Sarcoplasmic reticulum origin, calcium storage ability, and functional implications. *Muscle Nerve.* 8:299–306. <https://doi.org/10.1002/mus.880080406>
- Sambuughin, N., J. Capacchione, A. Blokhin, M. Bayarsaikhan, S. Bina, and S. Muldoon. 2009. The ryanodine receptor type 1 gene variants in African American men with exertional rhabdomyolysis and malignant hyperthermia susceptibility. *Clin. Genet.* 76:564–568. <https://doi.org/10.1111/j.1399-0004.2009.01251.x>
- Sambuughin, N., O. Mungunsukh, M. Ren, J.F. Capacchione, I. Horkayne-Szakaly, K. Chuang, S.M. Muldoon, J.K. Smith, F.G. O'Connor, and P.A. Deuster. 2018. Pathogenic and rare deleterious variants in multiple genes suggest oligogenic inheritance in recurrent exertional rhabdomyolysis. *Mol. Genet. Metab. Rep.* 16:76–81. <https://doi.org/10.1016/j.ymgmr.2018.07.007>
- Sanchez, E.J., K.M. Lewis, B.R. Danna, and C. Kang. 2012. High-capacity  $\text{Ca}^{2+}$  binding of human skeletal calsequestrin. *J. Biol. Chem.* 287:11592–11601. <https://doi.org/10.1074/jbc.M111.335075>
- Savarese, M., J. Sarparanta, A. Vihola, P.H. Jonson, M. Johari, S. Rusanen, P. Hackman, and B. Udd. 2020. Panorama of the distal myopathies. *Acta Myol.* 39:245–265. <https://doi.org/10.36185/2532-1900-028>
- Scacheri, P.C., E.P. Hoffman, J.D. Fratkin, C. Semino-Mora, A. Senchak, M.R. Davis, N.G. Laing, V. Vedanarayanan, and S.H. Subramony. 2000. A novel ryanodine receptor gene mutation causing both cores and rods in congenital myopathy. *Neurology.* 55:1689–1696. <https://doi.org/10.1212/wnl.55.11.1689>
- Schartner, V., N.B. Romero, S. Donkervoort, S. Treves, P. Munot, T.M. Pierson, I. Dabaj, E. Malfatti, I.T. Zaharieva, F. Zorzato, et al. 2017. Dihydropyridine receptor (DHPR, CACNA1S) congenital myopathy. *Acta Neuropathol.* 133:517–533. <https://doi.org/10.1007/s00401-016-1656-8>
- Schiaffino, S. 2012. Tubular aggregates in skeletal muscle: Just a special type of protein aggregates? *Neuromuscul. Disord.* 22:199–207. <https://doi.org/10.1016/j.nmd.2011.10.005>
- Shin, D.W., J. Ma, and D.H. Kim. 2000. The asp-rich region at the carboxyl-terminus of calsequestrin binds to  $\text{Ca}^{2+}$  and interacts with triadin. *FEBS Lett.* 486:178–182. [https://doi.org/10.1016/S0014-5793\(00\)02246-8](https://doi.org/10.1016/S0014-5793(00)02246-8)
- Shin, D.W., Z. Pan, E.K. Kim, J.M. Lee, M.B. Bhat, J. Parness, D.H. Kim, and J. Ma. 2003. A retrograde signal from calsequestrin for the regulation of store-operated  $\text{Ca}^{2+}$  entry in skeletal muscle. *J. Biol. Chem.* 278:3286–3292. <https://doi.org/10.1074/jbc.M209045200>
- Silva-Rojas, R., S. Treves, H. Jacobs, P. Kessler, N. Messaddeq, J. Laporte, and J. Böhm. 2019. STIM1 over-activation generates a multi-systemic phenotype affecting the skeletal muscle, spleen, eye, skin, bones and immune system in mice. *Hum. Mol. Genet.* 28:1579–1593. <https://doi.org/10.1093/hmg/ddy446>
- Silva-Rojas, R., J. Laporte, and J. Böhm. 2020. STIM1/ORAI1 loss-of-function and gain-of-function mutations inversely impact on SOCE and calcium homeostasis and cause multi-systemic mirror diseases. *Front. Physiol.* 11:604941. <https://doi.org/10.3389/fphys.2020.604941>
- Silva-Rojas, R., A.-L. Charles, S. Djeddi, B. Geny, J. Laporte, and J. Böhm. 2021. Pathophysiological effects of overactive STIM1 on murine muscle function and structure. *Cells.* 10:1730. <https://doi.org/10.3390/cells10071730>
- Silva-Rojas, R., V. Nattarayan, F. Jaque-Fernandez, R. Gomez-Oca, A. Menuet, D. Reiss, M. Goret, N. Messaddeq, V.M. Lionello, C. Kretz, et al. 2022. Mice with muscle-specific deletion of Bini recapitulate centronuclear myopathy and acute downregulation of dynamin 2 improves their phenotypes. *Mol. Ther.* 30:868–880. <https://doi.org/10.1016/j.ymthe.2021.08.006>
- Sparrow, J.C., K.J. Nowak, H.J. Durling, A.H. Beggs, C. Wallgren-Pettersson, N. Romero, I. Nonaka, and N.G. Laing. 2003. Muscle disease caused by mutations in the skeletal muscle alpha-actin gene (ACTA1). *Neuromuscul. Disord.* 13:519–531. [https://doi.org/10.1016/S0960-8966\(03\)00101-9](https://doi.org/10.1016/S0960-8966(03)00101-9)
- Srikanth, S., H.-J. Jung, B. Ribalet, and Y. Gwack. 2010. The intracellular loop of Orai1 plays a central role in fast inactivation of  $\text{Ca}^{2+}$  release-activated  $\text{Ca}^{2+}$  channels. *J. Biol. Chem.* 285:5066–5075. <https://doi.org/10.1074/jbc.M109.072736>
- Stiber, J., A. Hawkins, Z.-S. Zhang, S. Wang, J. Burch, V. Graham, C.C. Ward, M. Seth, E. Finch, N. Malouf, et al. 2008. STIM1 signalling controls store-operated calcium entry required for development and contractile function in skeletal muscle. *Nat. Cell Biol.* 10:688–697. <https://doi.org/10.1038/ncb1731>
- Stormorken, H., O. Sjaastad, A. Langset, I. Sulg, K. Egge, and J. Diderichsen. 1985. A new syndrome: Thrombocytopathia, muscle fatigue, asplenia, miosis, migraine, dyslexia and ichthyosis. *Clin. Genet.* 28:367–374. <https://doi.org/10.1111/j.1399-0004.1985.tb02209.x>
- Tajsharghi, H., L.-E. Thornell, C. Lindberg, B. Lindvall, K.-G. Henriksson, and A. Oldfors. 2003. Myosin storage myopathy associated with a heterozygous missense mutation in MYH7. *Ann. Neurol.* 54:494–500. <https://doi.org/10.1002/ana.10693>
- Tajsharghi, H., and A. Oldfors. 2013. Myosinopathies: Pathology and mechanisms. *Acta Neuropathol.* 125:3–18. <https://doi.org/10.1007/s00401-012-1024-2>
- Takayama, K., S. Mitsuhashi, J.-Y. Shin, R. Tanaka, T. Fujii, R. Tsuburaya, S. Mukaida, S. Noguchi, I. Nonaka, and I. Nishino. 2016. Japanese multiple epidermal growth factor 10 (MEGF10) myopathy with novel mutations: A phenotype-genotype correlation. *Neuromuscul. Disord.* 26:604–609. <https://doi.org/10.1016/j.nmd.2016.06.005>
- Takeshima, H., M. Iino, H. Takekura, M. Nishi, J. Kuno, O. Minowa, H. Takano, and T. Noda. 1994. Excitation-contraction uncoupling and muscular degeneration in mice lacking functional skeletal muscle ryanodine-receptor gene. *Nature.* 369:556–559. <https://doi.org/10.1038/369556a0>

- Takeshima, H., S. Komazaki, M. Nishi, M. Iino, and K. Kangawa. 2000. Juncophilins: A novel family of junctional membrane complex proteins. *Mol. Cell.* 6:11–22. [https://doi.org/10.1016/s1097-2765\(00\)00003-4](https://doi.org/10.1016/s1097-2765(00)00003-4)
- Tamminen, E.R., N. Kraeva, L. Figueroa, C. Manno, C.A. Ibarra, A. Klip, S. Riaz, and E. Rios. 2020. Intracellular calcium leak lowers glucose storage in human muscle, promoting hyperglycemia and diabetes. *Elife*. 9:e53999. <https://doi.org/10.7554/eLife.53999>
- Tang, J., W. Ma, Y. Chen, R. Jiang, Q. Zeng, J. Tan, H. Jiang, Q. Li, V.W. Zhang, J. Wang, et al. 2020. Novel SPEG variant cause centronuclear myopathy in China. *J. Clin. Lab. Anal.* 34:e23054. <https://doi.org/10.1002/jcla.23054>
- Telegrafi, A., B.D. Webb, S.M. Robbins, C.E. Speck-Martins, D. FitzPatrick, L. Fleming, R. Redett, A. Dufke, G. Houge, J.J.T. van Harsseel, et al. 2017. Identification of STAC3 variants in non-Native American families with overlapping features of Carey-Fineman-Ziter syndrome and Moebius syndrome. *Am. J. Med. Genet. A.* 173:2763–2771. <https://doi.org/10.1002/ajmg.a.38375>
- Tilgen, N., F. Zorzato, B. Halliger-Keller, F. Muntoni, C. Sewry, L.M. Palmucci, C. Schneider, E. Hauser, F. Lehmann-Horn, C.R. Müller, and S. Treves. 2001. Identification of four novel mutations in the C-terminal membrane spanning domain of the ryanodine receptor 1: Association with central core disease and alteration of calcium homeostasis. *Hum. Mol. Genet.* 10:2879–2887. <https://doi.org/10.1093/hmg/10.25.2879>
- Timmins, M.A., H. Rosenberg, M.G. Larach, C. Sterling, N. Kraeva, and S. Riaz. 2015. Malignant hyperthermia testing in probands without adverse anesthetic reaction. *Anesthesiology*. 123:548–556. <https://doi.org/10.1097/ALN.0000000000000732>
- Tobin, J.R., D.R. Jason, V.R. Challa, T.E. Nelson, and N. Sambuughin. 2001. Malignant hyperthermia and apparent heat stroke. *JAMA*. 286:168–169. <https://doi.org/10.1001/jama.286.2.168>
- Tong, J., H. Oyama, N. Demareux, S. Grinstein, T.V. McCarthy, and D.H. MacLennan. 1997. Caffeine and halothane sensitivity of intracellular  $Ca^{2+}$  release is altered by 15 calcium release channel (ryanodine receptor) mutations associated with malignant hyperthermia and/or central core disease. *J. Biol. Chem.* 272:26332–26339. <https://doi.org/10.1074/jbc.272.42.26332>
- Tong, J., T.V. McCarthy, and D.H. MacLennan. 1999. Measurement of resting cytosolic  $Ca^{2+}$  concentrations and  $Ca^{2+}$  store size in HEK-293 cells transfected with malignant hyperthermia or central core disease mutant  $Ca^{2+}$  release channels. *J. Biol. Chem.* 274:693–702. <https://doi.org/10.1074/jbc.274.2.693>
- Treves, S., H. Jungbluth, F. Muntoni, and F. Zorzato. 2008. Congenital muscle disorders with cores: The ryanodine receptor calcium channel paradigm. *Curr. Opin. Pharmacol.* 8:319–326. <https://doi.org/10.1016/j.coph.2008.01.005>
- Tung, C.-C., P.A. Lobo, L. Kimlicka, and F. Van Petegem. 2010. The amino-terminal disease hotspot of ryanodine receptors forms a cytoplasmic vestibule. *Nature*. 468:585–588. <https://doi.org/10.1038/nature09471>
- Uryash, A., A. Mijares, C.E. Lopez, J.A. Adams, and J.R. Lopez. 2022. Chronic elevation of skeletal muscle ( $Ca^{2+}$ ) impairs glucose uptake. An in vivo and in vitro study. *Front. Physiol.* 13:872624. <https://doi.org/10.3389/fphys.2022.872624>
- Vaeth, M., M. Maus, S. Klein-Hessling, E. Freinkman, J. Yang, M. Eckstein, S. Cameron, S.E. Turvey, E. Serfling, F. Berberich-Siebel, et al. 2017. Store-operated  $Ca^{2+}$  entry controls clonal expansion of T cells through metabolic reprogramming. *Immunity*. 47:664–679.e6. <https://doi.org/10.1016/j.immuni.2017.09.003>
- Vandersmissen, I., V. Biancalana, L. Servais, J.J. Dowling, G. Vander Stichele, S. Van Rooijen, and L. Thielemans. 2018. An integrated modelling methodology for estimating the prevalence of centronuclear myopathy. *Neuromuscul. Disord.* 28:766–777. <https://doi.org/10.1016/j.nmd.2018.06.012>
- Vasli, N., E. Harris, J. Karamchandani, E. Bareke, J. Majewski, N.B. Romero, T. Stojkovic, R. Barresi, H. Tasfaout, R. Charlton, et al. 2017. Recessive mutations in the kinase ZAK cause a congenital myopathy with fibre type disproportion. *Brain*. 140:37–48. <https://doi.org/10.1093/brain/aww257>
- Vattemi, G.N.A., D. Rossi, L. Galli, M.R. Catallo, E. Pantheri, G. Marchetto, B. Cisterna, M. Malatesta, E. Pierantozzi, P. Tonin, and V. Sorrentino. 2022. Ryanodine receptor 1 (RYR1) mutations in two patients with tubular aggregate myopathy. *Eur. J. Neurosci.* 56:4214–4223. <https://doi.org/10.1111/ejn.15728>
- Venetucci, L.A., A.W. Trafford, S.C. O'Neill, and D.A. Eisner. 2008. The sarcoplasmic reticulum and arrhythmogenic calcium release. *Cardiovasc. Res.* 77:285–292. <https://doi.org/10.1093/cvr/cvm009>
- Vig, M., C. Peinelt, A. Beck, D.L. Koomoa, D. Rabah, M. Koblan-Huberson, S. Kraft, H. Turner, A. Fleig, R. Penner, and J.-P. Kinet. 2006. CRACM1 is a plasma membrane protein essential for store-operated  $Ca^{2+}$  entry. *Science*. 312:1220–1223. <https://doi.org/10.1126/science.1127883>
- Villar-Quiles, R.N., M. von der Hagen, C. Métay, V. Gonzalez, S. Donkervoort, E. Bertini, C. Castiglioni, D. Chaigne, J. Colomer, M.L. Cuadrado, et al. 2020. The clinical, histologic, and genotypic spectrum of SEPN1-related myopathy: A case series. *Neurology*. 95:e1512–e1527. <https://doi.org/10.1212/WNL.00000000000010327>
- Volpatti, J.R., Y. Endo, J. Knox, L. Groom, S. Brennan, R. Noche, W.J. Zuercher, P. Roy, R.T. Dirksen, and J.J. Dowling. 2020. Identification of drug modifiers for RYR1-related myopathy using a multi-species discovery pipeline. *Elife*. 9:e52946. <https://doi.org/10.7554/eLife.52946>
- von der Hagen, M., W. Kress, G. Hahn, K.S. Brocke, P. Mitzscherling, A. Huebner, C. Müller-Reible, G. Stoltenburg-Didinger, and A.M. Kaindl. 2008. Novel RYR1 missense mutation causes core rod myopathy. *Eur. J. Neurol.* 15:e31–e32. <https://doi.org/10.1111/j.1468-1331.2008.02094.x>
- Walters, G.C., and Y.M. Usachev. 2022. MCU (mitochondrial  $Ca^{2+}$  uniporter) makes the calcium go round. *J. Biol. Chem.* 298:101604. <https://doi.org/10.1016/j.jbc.2022.101604>
- Wang, S., M. Choi, A.S. Richardson, B.M. Reid, F. Seymen, M. Yildirim, E. Tuna, K. Gençay, J.P. Simmer, and J.C. Hu. 2014. STIM1 and SLC24A4 are critical for enamel maturation. *J. Dent. Res.* 93:94S–100S. <https://doi.org/10.1177/0022034514527971>
- Wang, L., L. Zhang, S. Li, Y. Zheng, X. Yan, M. Chen, H. Wang, J.W. Putney, and D. Luo. 2015. Retrograde regulation of STIM1-Orai1 interaction and store-operated  $Ca^{2+}$  entry by calsequestrin. *Sci. Rep.* 5:11349. <https://doi.org/10.1038/srep11349>
- Wang, H., C. Castiglioni, A. Kaçar Bayram, F. Fattori, S. Pekuz, D. Araneda, H. Per, R. Erazo, H. Gümüş, S. Zorludemir, et al. 2017. Insights from genotype-phenotype correlations by novel SPEG mutations causing centronuclear myopathy. *Neuromuscul. Disord.* 27:836–842. <https://doi.org/10.1016/j.nmd.2017.05.014>
- Wappler, F., M. Fiege, M. Steinfath, K. Agarwal, J. Scholz, S. Singh, J. Matschke, and J. Schulte Am Esch. 2001. Evidence for susceptibility to malignant hyperthermia in patients with exercise-induced rhabdomyolysis. *Anesthesiology*. 94:95–100. <https://doi.org/10.1097/0000542-200101000-00019>
- Weidinger, C., P.J. Shaw, and S. Feske. 2013. STIM1 and STIM2-mediated  $Ca^{2+}$  influx regulates antitumor immunity by CD8(+) T cells. *EMBO Mol. Med.* 5:1311–1321. <https://doi.org/10.1002/emmm.201302989>
- Wei-Lapierre, L., E.M. Carrell, S. Boncompagni, F. Protasi, and R.T. Dirksen. 2013. Orai1-dependent calcium entry promotes skeletal muscle growth and limits fatigue. *Nat. Commun.* 4:2805. <https://doi.org/10.1038/ncomms3805>
- Wilmshurst, J.M., S. Lillis, H. Zhou, K. Pillay, H. Henderson, W. Kress, C.R. Müller, A. Ndong, V. Cloke, T. Cullup, et al. 2010. RYR1 mutations are a common cause of congenital myopathies with central nuclei. *Ann. Neurol.* 68:717–726. <https://doi.org/10.1002/ana.22119>
- Wilson, R.J., S.P. Lyons, T.R. Koves, V.G. Bryson, H. Zhang, T. Li, S.B. Crown, J.-D. Ding, P.A. Grimsrud, P.B. Rosenberg, and D.M. Muoio. 2022. Disruption of STIM1-mediated  $Ca^{2+}$  sensing and energy metabolism in adult skeletal muscle compromises exercise tolerance, proteostasis, and lean mass. *Mol. Metab.* 57:101429. <https://doi.org/10.1016/j.molmet.2021.101429>
- Woll, K.A., O. Haji-Ghassemi, and F. Van Petegem. 2021. Pathological conformations of disease mutant Ryanodine Receptors revealed by cryo-EM. *Nat. Commun.* 12:807. <https://doi.org/10.1038/s41467-021-21141-3>
- Woll, K.A., and F. Van Petegem. 2022. Calcium-release channels: Structure and function of IP3 receptors and ryanodine receptors. *Physiol. Rev.* 102:209–268. <https://doi.org/10.1152/physrev.00033.2020>
- Wu, S., M.C.A. Ibarra, M.C.V. Malicdan, K. Murayama, Y. Ichihara, H. Kikuchi, I. Nonaka, S. Noguchi, Y.K. Hayashi, and I. Nishino. 2006. Central core disease is due to RYR1 mutations in more than 90% of patients. *Brain*. 129:1470–1480. <https://doi.org/10.1093/brain/awl077>
- Xu, L., Y. Wang, N. Yamaguchi, D.A. Pasek, and G. Meissner. 2008. Single channel properties of heterotetrameric mutant RyR1 ion channels linked to core myopathies. *J. Biol. Chem.* 283:6321–6329. <https://doi.org/10.1074/jbc.M707353200>
- Yan, Z., X. Bai, C. Yan, J. Wu, Z. Li, T. Xie, W. Peng, C. Yin, X. Li, S.H.W. Scheres, et al. 2015. Structure of the rabbit ryanodine receptor RyR1 at near-atomic resolution. *Nature*. 517:50–55. <https://doi.org/10.1038/nature14063>
- Yang, T., J. Riehl, E. Esteve, K.I. Mattheaei, S. Goth, P.D. Allen, I.N. Pessah, and J.R. Lopez. 2006. Pharmacologic and functional characterization of

- malignant hyperthermia in the R163C RyR1 knock-in mouse. *Anesthesiology*. 105:1164–1175. <https://doi.org/10.1097/00000542-200612000-00016>
- Yang, T., P.D. Allen, I.N. Pessah, and J.R. Lopez. 2007. Enhanced excitation-coupled calcium entry in myotubes is associated with expression of RyR1 malignant hyperthermia mutations. *J. Biol. Chem.* 282:7471–7478. <https://doi.org/10.1074/jbc.M701379200>
- Yarotsky, V., F. Protasi, and R.T. Dirksen. 2013. Accelerated activation of SOCE current in myotubes from two mouse models of anesthetic- and heat-induced sudden death. *PLoS One*. 8:e77633. <https://doi.org/10.1371/journal.pone.0077633>
- Yiş, U., S. Hiz, S. Güneş, G. Diniz, F. Baydan, A. Töpf, E. Sonmezler, H. Lochmüller, R. Horvath, and Y. Oktay. 2019. Dihydropyridine receptor congenital myopathy in A consanguineous Turkish family. *J. Neuromuscul. Dis.* 6:377–384. <https://doi.org/10.3233/JND-190383>
- Yoast, R.E., S.M. Emrich, X. Zhang, P. Xin, M.T. Johnson, A.J. Fike, V. Walter, N. Hempel, D.I. Yule, J. Sneyd, et al. 2020. The native ORAI channel trio underlies the diversity of  $\text{Ca}^{2+}$  signaling events. *Nat. Commun.* 11:2444. <https://doi.org/10.1038/s41467-020-16232-6>
- Yoast, R.E., S.M. Emrich, X. Zhang, P. Xin, V. Arige, T. Pathak, J.C. Benson, M.T. Johnson, A.E. Abdelnaby, N. Lakowski, et al. 2021. The Mitochondrial  $\text{Ca}^{2+}$  uniporter is a central regulator of interorganellar  $\text{Ca}^{2+}$  transfer and NFAT activation. *J. Biol. Chem.* 297:101174. <https://doi.org/10.1016/j.jbc.2021.101174>
- Yuan, Q., H. Dridi, O.B. Clarke, S. Reiken, Z. Melville, A. Wronska, A. Kushnir, R. Zalk, L. Sittenfeld, and A.R. Marks. 2021. RyR1-related myopathy mutations in ATP and calcium binding sites impair channel regulation. *Acta Neuropathol. Commun.* 9:186. <https://doi.org/10.1186/s40478-021-01287-3>
- Yuen, B., S. Boncompagni, W. Feng, T. Yang, J.R. Lopez, K.I. Mattheaei, S.R. Goth, F. Protasi, C. Franzini-Armstrong, P.D. Allen, and I.N. Pessah. 2012. Mice expressing T4826I-RYR1 are viable but exhibit sex- and genotype-dependent susceptibility to malignant hyperthermia and muscle damage. *FASEB J.* 26:1311–1322. <https://doi.org/10.1096/fj.11-197582>
- Yuen, M., S.T. Cooper, S.B. Marston, K.J. Nowak, E. McNamara, N. Mokbel, B. Ilkovski, G. Ravenscroft, J. Rendu, J.M. de Winter, et al. 2015. Muscle weakness in TPM3-myopathy is due to reduced  $\text{Ca}^{2+}$ -sensitivity and impaired acto-myosin cross-bridge cycling in slow fibres. *Hum. Mol. Genet.* 24:6278–6292. <https://doi.org/10.1093/hmg/ddv334>
- Zaharieva, I.T., A. Sarkozy, P. Munot, A. Manzur, G. O'Grady, J. Rendu, E. Malfatti, H. Amthor, L. Servais, J.A. Urtizberea, et al. 2018. STAC3 variants cause a congenital myopathy with distinctive dysmorphic features and malignant hyperthermia susceptibility. *Hum. Mutat.* 39:1980–1994. <https://doi.org/10.1002/humu.23635>
- Zalk, R., O.B. Clarke, A. des Georges, R.A. Grassucci, S. Reiken, F. Mancina, W.A. Hendrickson, J. Frank, and A.R. Marks. 2015. Structure of a mammalian ryanodine receptor. *Nature*. 517:44–49. <https://doi.org/10.1038/nature13950>
- Zhang, L., J. Kelley, G. Schmeisser, Y.M. Kobayashi, and L.R. Jones. 1997. Complex formation between junctin, triadin, calsequestrin, and the ryanodine receptor. Proteins of the cardiac junctional sarcoplasmic reticulum membrane. *J. Biol. Chem.* 272:23389–23397. <https://doi.org/10.1074/jbc.272.37.23389>
- Zhang, S.L., A.V. Yeromin, X.H.-F. Zhang, Y. Yu, O. Safrina, A. Penna, J. Roos, K.A. Stauderman, and M.D. Cahalan. 2006. Genome-wide RNAi screen of  $\text{Ca}^{2+}$  influx identifies genes that regulate  $\text{Ca}^{2+}$  release-activated  $\text{Ca}^{2+}$  channel activity. *Proc. Natl. Acad. Sci. USA*. 103:9357–9362. <https://doi.org/10.1073/pnas.0603161103>
- Zhang, L., L. Wang, S. Li, J. Xue, and D. Luo. 2016. Calsequestrin-1 regulates store-operated  $\text{Ca}^{2+}$  entry by inhibiting STIM1 aggregation. *Cell Physiol. Biochem.* 38:2183–2193. <https://doi.org/10.1159/000445574>
- Zhao, X., C.K. Min, J.-K. Ko, J. Parness, D.H. Kim, N. Weisleder, and J. Ma. 2010. Increased store-operated  $\text{Ca}^{2+}$  entry in skeletal muscle with reduced calsequestrin-1 expression. *Biophys. J.* 99:1556–1564. <https://doi.org/10.1016/j.bpj.2010.06.050>
- Zhou, H., M. Brockington, H. Jungbluth, D. Monk, P. Stanier, C.A. Sewry, G.E. Moore, and F. Muntoni. 2006. Epigenetic allele silencing unveils recessive RYR1 mutations in core myopathies. *Am. J. Hum. Genet.* 79:859–868. <https://doi.org/10.1086/508500>
- Zomot, E., H. Achildiev Cohen, I. Dagan, R. Militin, and R. Palty. 2021. Bidirectional regulation of calcium release-activated calcium (CRAC) channel by SARAF. *J. Cell Biol.* 220:e202104007. <https://doi.org/10.1083/jcb.202104007>
- Zvaritch, E., F. Depreux, N. Kraeva, R.E. Loy, S.A. Goonasekera, S. Boncompagni, S. Boncompagni, A. Kraev, A.O. Gramolini, R.T. Dirksen, et al. 2007. An RYR14895T mutation abolishes  $\text{Ca}^{2+}$  release channel function and delays development in homozygous offspring of a mutant mouse line. *Proc. Natl. Acad. Sci. USA*. 104:18537–18542. <https://doi.org/10.1073/pnas.0709312104>
- Zvaritch, E., N. Kraeva, E. Bombardier, R.A. McCloy, F. Depreux, D. Holmyard, A. Kraev, C.E. Seidman, J.G. Seidman, A.R. Tupling, and D.H. MacLennan. 2009.  $\text{Ca}^{2+}$  dysregulation in Ryr1(f4895T/wt) mice causes congenital myopathy with progressive formation of minicores, cores, and nemaline rods. *Proc. Natl. Acad. Sci. USA*. 106:21813–21818. <https://doi.org/10.1073/pnas.0912126106>
- Zvaritch, E., R. Gillies, N. Kraeva, M. Richer, H. Jungbluth, and S. Razi. 2019. Fatal awake malignant hyperthermia episodes in a family with malignant hyperthermia susceptibility: A case series. *Can. J. Anaesth.* 66:540–545. <https://doi.org/10.1007/s12630-019-01320-z>
- Zweifach, A., and R.S. Lewis. 1995a. Rapid inactivation of depletion-activated calcium current (ICRAC) due to local calcium feedback. *J. Gen. Physiol.* 105:209–226. <https://doi.org/10.1085/jgp.105.2.209>
- Zweifach, A., and R.S. Lewis. 1995b. Slow calcium-dependent inactivation of depletion-activated calcium current. Store-dependent and -independent mechanisms. *J. Biol. Chem.* 270:14445–14451. <https://doi.org/10.1074/jbc.270.24.14445>