

## ARTICLE

# B cell-intrinsic requirement for WNK1 kinase in antibody responses in mice

Darryl A. Hayward<sup>1</sup>, Lesley Vanes<sup>1</sup>, Stefanie Wissmann<sup>2</sup>, Sujana Sivapatham<sup>2</sup>, Harald Hartweger<sup>1</sup>, Joshua Biggs O'May<sup>1</sup>, Leonard L. de Boer<sup>1</sup>, Richard Mitter<sup>1</sup>, Robert Köchl<sup>1</sup>, Jens V. Stein<sup>2</sup>, and Victor L.J. Tybulewicz<sup>1</sup>

**Migration and adhesion play critical roles in B cells, regulating recirculation between lymphoid organs, migration within lymphoid tissue, and interaction with CD4<sup>+</sup> T cells. However, there is limited knowledge of how B cells integrate chemokine receptor and integrin signaling with B cell activation to generate efficient humoral responses. Here, we show that the WNK1 kinase, a regulator of migration and adhesion, is essential in B cells for T-dependent and -independent antibody responses. We demonstrate that WNK1 transduces signals from the BCR, CXCR5, and CD40, and using intravital imaging, we show that WNK1 regulates migration of naive and activated B cells, and their interactions with T cells. Unexpectedly, we show that WNK1 is required for BCR- and CD40-induced proliferation, acting through the OXSR1 and STK39 kinases, and for efficient B cell-T cell collaboration in vivo. Thus, WNK1 is critical for humoral immune responses, by regulating B cell migration, adhesion, and T cell-dependent activation.**

## Introduction

Migration and adhesion play critical roles in B cell physiology. Naive B cells migrate between lymphoid organs via the bloodstream, entering LNs by extravasating across the endothelium of high endothelial venules (HEV) using LFA-1 integrin-mediated adhesion triggered by chemokine signals (Girard et al., 2012). Once inside lymphoid tissue, B cells migrate into and within follicular areas under the influence of chemokines such as CXCL13 (Schulz et al., 2016). This continuous movement of B cells allows the cells to locate their cognate antigen and is thus essential for recruitment of B cells into the adaptive immune response.

Migration and cell-cell interactions are also vital during T-dependent B cell activation and subsequent generation of high affinity antibodies after microbial challenge or vaccination (Cyster and Allen, 2019). B cells encounter antigen presented on the surface of antigen-presenting cells such as macrophages, follicular dendritic cells, and dendritic cells. Binding of cognate antigen to the B cell antigen receptor (BCR) results in LFA-1-mediated adhesion of the B cell to the antigen-presenting cell, internalization of the antigen-BCR complex, degradation of the antigen and, for protein-based antigens, presentation of resulting peptides on MHC class II molecules (Akkaya et al., 2020; Yuseff et al., 2013). Furthermore, binding of antigen to the BCR

induces signals that cause movement of B cells from the follicles toward the border of the T cell zone where they interact with CD4<sup>+</sup> T cells bearing TCR specific for the peptide-MHC complex on B cells (Garside et al., 1998; MacLennan et al., 1997; Okada et al., 2005; Qi et al., 2008; Qi et al., 2014; Reif et al., 2002; Schwickert et al., 2011; Tangye et al., 2013). Binding of the peptide-MHC complex on B cells to the TCR on T cells triggers activation of the LFA-1 integrin on the T cells and binding to its ligands ICAM-1 and ICAM-2 on B cells, resulting in firm adhesion between the cognate B and T cells (Zaretsky et al., 2017). These B-T conjugates are further stabilized through interactions between SLAM family molecules on the surface of both B and T cells (Cannons et al., 2010; Qi et al., 2008; Wu and Veillette, 2016). Subsequent two-way signaling between the B and T cells causes both cell types to become activated and to divide (Crotty, 2015; Petersone et al., 2018). B cell-T cell couples migrate back into the follicle and differentiate into germinal center B (GCB) cells and T follicular helper cells, thereby establishing germinal centers (Mesin et al., 2016; Victora and Nussenzweig, 2012). Here, using LFA-1 and VLA-4 integrin-mediated adhesion, B cells acquire further cognate antigen presented on follicular dendritic cells (Tew et al., 1997; Wang et al., 2014). Within germinal centers, somatic hypermutation

<sup>1</sup>The Francis Crick Institute, London, UK; <sup>2</sup>Department of Oncology, Microbiology and Immunology, University of Fribourg, Fribourg, Switzerland.

Correspondence to Victor L.J. Tybulewicz: [victor.t@crick.ac.uk](mailto:victor.t@crick.ac.uk)

D.A. Hayward's current affiliation is GSK, Stevenage, UK. H. Hartweger's current affiliation is Laboratory of Molecular Immunology, The Rockefeller University, New York, NY, USA. R. Köchl's current affiliation is King's College London, London, UK.

© 2023 Hayward et al. This article is available under a Creative Commons License (Attribution 4.0 International, as described at <https://creativecommons.org/licenses/by/4.0/>).

of immunoglobulin genes drives affinity maturation, and GCB cells differentiate into antibody-secreting plasma cells and memory B cells. Thus, migration and adhesion play essential roles in B cells during T-dependent activation and need to be closely integrated with activation signals that jointly result in high affinity antibody responses.

WNK1, a member of the WNK family of protein kinases, is best characterized in kidney epithelial cells where it regulates salt uptake from the urine (McCormick and Ellison, 2011; Shekarabi et al., 2017; Wilson et al., 2001). WNK1 phosphorylates and activates the related OXSR1 and STK39 kinases, which in turn phosphorylate members of the SLC12A family of ion co-transporters causing net influx of Na<sup>+</sup>, K<sup>+</sup>, and Cl<sup>-</sup> (Alessi et al., 2014; Thastrup et al., 2012; Vitari et al., 2005; Vitari et al., 2006). Surprisingly, we discovered that in CD4<sup>+</sup> T cells, WNK1 is activated by signaling from the TCR and CCR7 and that it is a positive regulator of CCR7-induced migration, via OXSR1, STK39, and SLC12A2, and a negative regulator of LFA-1-mediated adhesion (Köchl et al., 2016).

We hypothesized that WNK1 may regulate migration and adhesion of B cells, and thus play an important role in humoral immune responses. We show that WNK1 is activated by signals from the BCR and CXCR5 and is a positive regulator of chemokine-induced migration and a negative regulator of integrin-mediated adhesion. Unexpectedly, we also show that WNK1 is activated by CD40 signaling and that it transduces BCR and CD40 signals via OXSR1 and STK39 that lead to B cell division. Using intravital imaging, we found that WNK1 is required for the migration of naive and activated B cells and their interactions with T cells, and show that B cell-intrinsic loss of WNK1 impairs B cell-T cell collaboration, differentiation into GCB cells, and severely reduces T-dependent antibody responses. Thus, WNK1 is critical for humoral immunity because it regulates B cell migration, adhesion, activation, and division.

## Results

### B lineage cells express members of the WNK pathway

To evaluate whether WNK1 may regulate B cell migration and adhesion, we first assessed whether members of the WNK1 pathway were expressed in B lineage cells. Using our previously generated RNA sequencing (RNAseq) data from eight different B cell subsets (Brazão et al., 2016), we found that *Wnk1* is the only WNK family member expressed in any B cell subset (Fig. S1, A–D). Furthermore, we found that *Oxsr1* and *Stk39*, encoding the related WNK1-activated OXSR1 and STK39 kinases, are expressed in all B cell subsets, albeit expression of *Oxsr1* is higher than *Stk39* (Fig. S1, E and F). Of the seven genes encoding the SLC12A family of co-transporters, expression of *Slc12a2*, *Slc12a3*, *Slc12a4*, *Slc12a6*, and *Slc12a7* was also detected (Fig. S1, G–M). Thus, B cells express multiple members of the WNK1 pathway.

### Signaling from BCR and CXCR5 activates WNK1

To study the role of WNK1 in B cells, we used three different strategies. Firstly, since constitutive inactivation of *Wnk1* results in embryonic lethality (Zambrowicz et al., 2003), we bred mice with a loxP-flanked (floxed) allele of *Wnk1* (*Wnk1<sup>fl</sup>*), a tamoxifen-

inducible Cre recombinase expressed from the ROSA26 locus (*ROSA26<sup>CreERT2</sup>*, RCE) and either a WT or constitutively deleted allele of *Wnk1* (*Wnk1<sup>+</sup>* or *Wnk1<sup>-</sup>*) and used bone marrow from the resulting *Wnk1<sup>fl/+</sup>*RCE or *Wnk1<sup>fl/-</sup>*RCE mice to reconstitute irradiated RAG1-deficient mice (Fig. S2 A). Treatment of these animals with tamoxifen led to efficient deletion of the floxed *Wnk1* allele in B cells 7 d later, hence generating mice with WNK1-deficient B cells and control WNK1-expressing B cells (Fig. S2 B).

Secondly, to extend the analysis to the function of WNK1 kinase activity, we used a *Wnk1* allele expressing a kinase-inactive WNK1-D368A (*Wnk1<sup>D368A</sup>*; Köchl et al., 2016), reconstituting RAG1-deficient mice with bone marrow from either *Wnk1<sup>fl/+</sup>*RCE or *Wnk1<sup>fl/D368A</sup>*RCE mice (Fig. S2 A). Treatment of these chimeras with tamoxifen resulted in the generation of B cells expressing only WNK1-D368A or control B cells expressing WT WNK1. In both cases, loss of WNK1 or its kinase activity caused a drop in the number of mature B cells in the spleen and LNs (Fig. S2, C and D), suggesting that WNK1 activity may be important for B cell survival. Nonetheless, sufficient numbers of WNK1-deficient or WNK1-D368A expressing B cells remained for functional analysis.

Thirdly, it is possible that loss of WNK1 or its kinase activity may cause changes in B cells during the 7 d following the start of tamoxifen treatment, resulting in phenotypes that are not due to an acute requirement for WNK1. To overcome this limitation, we used WNK463, a highly selective WNK kinase inhibitor (Yamada et al., 2016), which allowed investigation of the effect of acute inhibition of WNK1 kinase activity.

WNK1 transduces signals from both the TCR and CCR7 (Köchl et al., 2016); thus, we investigated whether, by analogy, WNK1 is activated downstream of the BCR and CXCR5 in B cells. We used phosphorylation of Ser325 on OXSR1 as a readout, as this residue is a direct WNK1 target (Vitari et al., 2005). We found that the stimulation of B cells with anti-IgM resulted in a small but significant rise in phosphorylated OXSR1 (p-OXSR1) peaking at 10 min (Fig. 1 A), whereas CXCL13, the ligand for CXCR5, caused a larger and more rapid increase in p-OXSR1 reaching a maximum at 2 min (Fig. 1 E). In both cases, this increase in p-OXSR1 was eliminated by the loss of WNK1 or its kinase activity, or by treatment of WT B cells with WNK463, demonstrating that both BCR and CXCR5 signaling activates WNK1 (Fig. 1, B–D and F–H). Notably, the loss of WNK1 or its kinase activity reduced the levels of p-OXSR1 to below those detected in unstimulated control B cells. Thus, WNK1 kinase has basal activity in resting B cells which is rapidly increased to a lesser or greater extent in response to stimulation through the BCR or CXCR5, respectively.

We speculated that this basal WNK1 activity could be due to signaling from the BCR, which is required for B cell survival (Lam et al., 1997; Schweighoffer and Tybulewicz, 2018). This signal could emanate from intrinsic low-level BCR signaling or the receptor may be relaying signals from BAFF-R, the receptor for the survival cytokine BAFF (Schweighoffer et al., 2013). In either case, the BCR transduces survival signals through the SYK tyrosine kinase (Schweighoffer et al., 2013). To evaluate whether this basal BCR signal is responsible for the basal WNK1 activity, we measured the levels of p-OXSR1 in control and SYK-deficient B cells. We found no decrease in p-OXSR1 in the

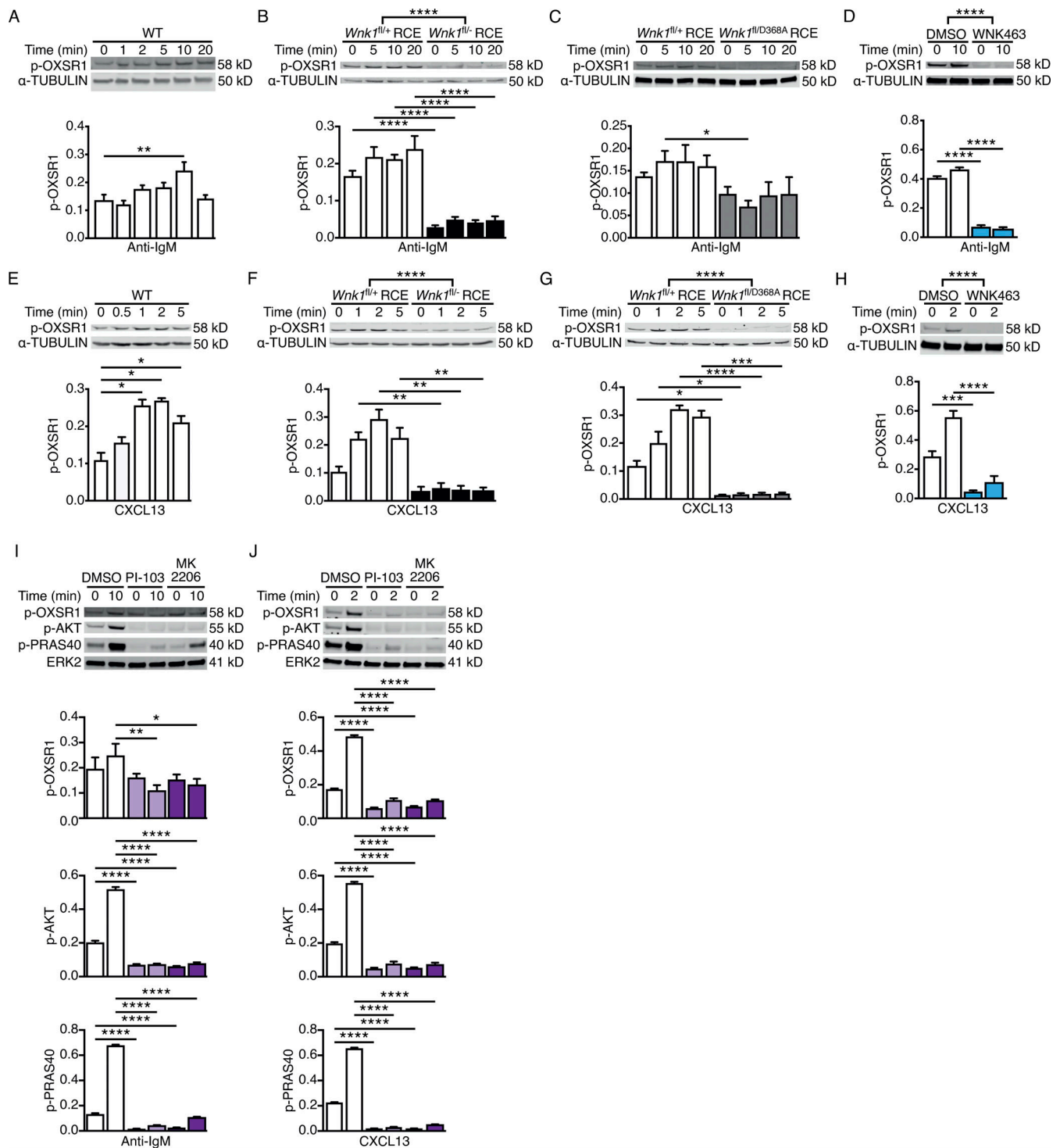


Figure 1. **Signaling from the BCR and CXCR5 activates WNK1 via PI3K and AKT. (A–J)** Top: Immunoblots of cell lysates from mouse B cells stimulated for the indicated times with anti-IgM (A–D and I) or CXCL13 (E–H and J) using WT (A and E), WNK1-deficient or control B cells (B and F), B cells expressing kinase-inactive WNK1-D368A or control B cells (C and G), or WT B cells treated with vehicle (DMSO), an inhibitor of WNK family kinases (WNK463; D and H), a PI3K inhibitor (PI-103) or an AKT inhibitor (MK2206; I and J), probed with antibodies to phosphorylated OXSRI (p-OXSRI),  $\alpha$ -TUBULIN, phosphorylated AKT (p-AKT), phosphorylated PRAS40 (p-PRAS40) or ERK2. Bottom: Mean  $\pm$  SEM abundance of p-OXSRI, p-AKT, and p-PRAS40 in the lanes above, normalized to  $\alpha$ -TUBULIN or ERK2. Mann–Whitney test (A and E), two-way ANOVA (B–D, F–H, I, and J); \*, 0.01 < P < 0.05; \*\*, 0.001 < P < 0.01; \*\*\*, 0.0001 < P < 0.001; \*\*\*\*, P < 0.0001. Sample sizes: four (B, E, and J); five (C, F, G, and I); seven (D and H); and eight (A). Data are pooled from two (B, C, E, F, G, I, and J) or three (A, D, and H) independent experiments. Source data are available for this figure: SourceData F1.

absence of SYK, indeed the level was consistently elevated (Fig. S2 E). Thus, basal WNK1 activity in B cells is not dependent on basal BCR signaling.

### BCR and CXCR5 signaling activate WNK1 via phosphoinositide 3-kinase (PI3K) and AKT

TCR and CCR7 signaling activates WNK1 via PI3K and AKT (Köchl et al., 2016), thus we investigated whether this is also true for BCR and CXCR5 signaling in B cells. Stimulation of B cells with anti-IgM or CXCL13 in the presence of PI-103 and MK2206, inhibitors of PI3K and AKT, respectively, resulted in decreased levels of phosphorylated AKT and PRAS40, confirming that the inhibitors were functional (Fig. 1, I and J). Both inhibitors also reduced the BCR- and CXCR5-induced increase in p-OXSRI. Thus, both BCR and CXCR5 transduce signals via PI3K and AKT that lead to WNK1 activation.

### WNK1 is a negative regulator of B cell adhesion to ICAM-1

Since WNK1 is a negative regulator of LFA-1-mediated adhesion in CD4<sup>+</sup> T cells (Köchl et al., 2016), we investigated whether WNK1 plays a similar role in B cells stimulated via the BCR or CXCR5. We found that in response to stimulation by anti-IgM or CXCL13, B cells deficient in WNK1 or its kinase activity showed substantially higher binding to ICAM-1 and VCAM-1, ligands for the LFA-1 and VLA-4 integrins, respectively (Fig. 2, A and B; and Fig. S2 F). Thus, WNK1 is a negative regulator of LFA-1- and VLA-4-mediated adhesion in B cells. Furthermore, loss of WNK1 also induced higher binding to ICAM-1 following treatment of B cells with MnCl<sub>2</sub> which induces a conformational change in LFA-1 resulting in a high affinity for ICAM-1, demonstrating that WNK1 regulates the avidity of LFA-1 adhesion. This could be through the effects on integrin clustering or tethering to the cytoskeleton. Analysis of surface proteins showed that WNK1-deficient B cells had normal levels of IgM, slightly increased levels of CD11a, a subunit of LFA-1, and slightly decreased levels of CXCR5 (Fig. S2 G). The increase in CD11a is much smaller than the increase in adhesion, so it is unlikely to account for the majority of the increased adhesion.

To investigate whether OXSRI or STK39, two well-characterized substrates of WNK1 (Vitari et al., 2005), transduce WNK1 signals that regulate LFA-1-mediated adhesion, we used mice containing floxed alleles of *Oxsr1* (*Oxsr1<sup>fl</sup>*), reconstituting irradiated RAG1-deficient mice with bone marrow from *Oxsr1<sup>+/+</sup>*RCE and *Oxsr1<sup>fl/fl</sup>*RCE mice (Fig. S2 H). Treatment of these chimeras with tamoxifen resulted in efficient loss of OXSRI, but no change in numbers of mature B cells (Fig. S2, I and J). Analysis of OXSRI-deficient B cells showed that they also had increased ICAM-1 binding in response to treatment with anti-IgM, CXCL13, or MnCl<sub>2</sub> (Fig. 2 C). However, the increase was not as large as that seen in the absence of WNK1, suggesting that other WNK1 substrates may be involved, such as STK39. To investigate this potential redundancy between OXSRI and STK39, we combined the floxed *Oxsr1* allele with an allele of *Stk39* expressing a mutant STK39-T243A protein that cannot be phosphorylated and activated by WNK1 (*Stk39<sup>T243A</sup>*). Reconstitution of irradiated RAG1-deficient mice with bone marrow from *Oxsr1<sup>+/+</sup>Stk39<sup>+/+</sup>*RCE and *Oxsr1<sup>fl/fl</sup>Stk39<sup>T243A/T243A</sup>*RCE mice (Fig.

S2 H) and subsequent tamoxifen treatment resulted in efficient loss of OXSRI in the double mutant mice, and again no change in B cell numbers (Fig. S2, K and L). Analysis of B cells deficient in OXSRI and expressing STK39-T243A showed that they also had increased binding to ICAM-1 in response to stimulation with anti-IgM, CXCL13, or MnCl<sub>2</sub>, and that the increase was larger than that seen following loss of OXSRI alone (Fig. 2 D).

Finally, we investigated whether SLC12A2, one of the ion co-transporters activated by the WNK1-OXSRI-STK39 pathway, also regulates integrin-mediated adhesion. We reconstituted irradiated RAG1-deficient mice with fetal liver from *Slc12a2<sup>+/+</sup>* and *Slc12a2<sup>-/-</sup>* mice (Fig. S2 M). The loss of SLC12A2 did not affect B cell numbers (Fig. S2 N), and SLC12A2-deficient B cells showed no change in binding to ICAM-1 in response to anti-IgM, CXCL13, or MnCl<sub>2</sub> (Fig. 2 E), demonstrating that SLC12A2 is not required for integrin regulation. However, since B cells express four other SLC12A family members (Fig. S1, G–M), there could be redundancy of function between these ion co-transporters, a possibility that would need further investigation. Taken together, these results are consistent with the hypothesis that WNK1 transduces signals from the BCR and CXCR5 through OXSRI and STK39, leading to negative regulation of LFA-1-mediated adhesion.

### WNK1 is a positive regulator of CXCL13-induced B cell migration in vitro

WNK1 regulates migration in different cell types (Köchl et al., 2016; Sun et al., 2006; Zhu et al., 2014). Thus, we hypothesized that WNK1 may also regulate CXCR5-induced migration in B cells. Using a Transwell assay, we found that WNK1-deficient B cells migrated through the Transwell filter much less efficiently in response to CXCL13 (Fig. 2 F). Furthermore, the imaging of CXCL13-induced migration showed that the loss of WNK1 resulted in reduced B cell speed and displacement (Fig. 2, F and G). Similarly, the inhibition of WNK1 also resulted in reduced CXCL13-induced migration across a Transwell filter (Fig. 2 I). Interestingly, loss of WNK1 reduced the migration of unstimulated B cells, suggesting that basal WNK1 activity also contributes to B cell migration. Thus, WNK1 kinase activity is a positive regulator of CXCL13-induced chemotaxis and chemokinesis. In contrast, the inhibition of SLC12A2 with either bumetanide or azosemide had no effect on CXCL13-induced Transwell migration (Fig. 2 J), potentially again due to redundancy between SLC12A family members.

### WNK1 is required for efficient homing of B cells to lymphoid organs and migration within them

In view of the altered adhesion and migration of WNK1-deficient B cells in vitro, and the importance of these processes in B cell trafficking in vivo, we examined the ability of the mutant B cells to home efficiently to lymphoid organs. We injected a mixture of control and WNK1-deficient B cells intravenously into mice and 1 h later analyzed their distribution by flow cytometry (Fig. 3 A). The results showed that fewer WNK1-deficient B cells entered LNs and spleen compared to control B cells, whereas more mutant cells remained in the blood, indicating that WNK1 is



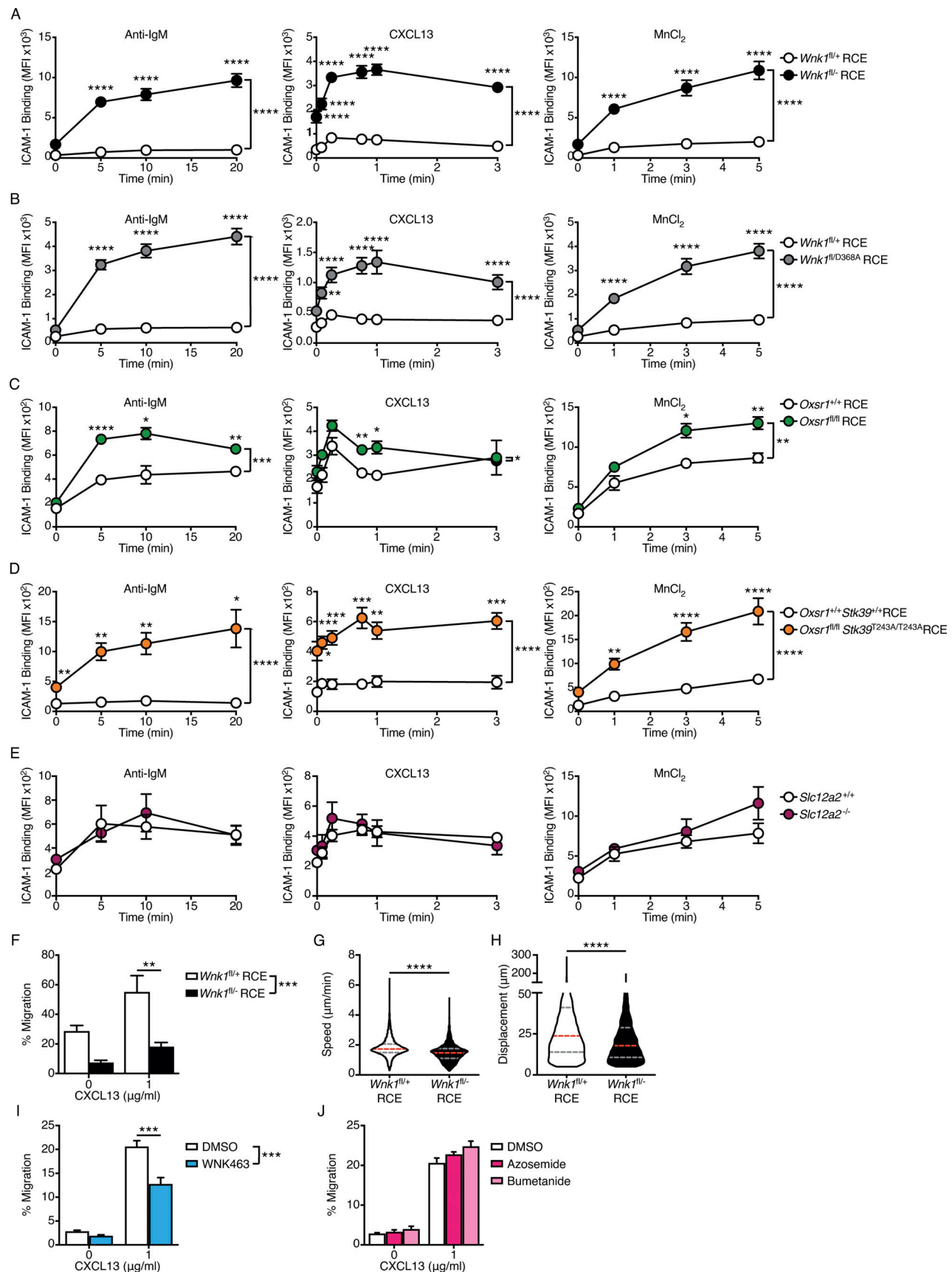


Figure 2. **WNK1 regulates B cell adhesion and migration in vitro.** (A–E) Mean  $\pm$  SEM binding of soluble ICAM-1 complexes to mouse B cells from control B cells and either WNK1-deficient B cells (A), B cells expressing kinase-inactive WNK1-D368A (B), OXSR1-deficient B cells (C), OXSR1-deficient B cells

expressing a non-phosphorylatable mutant of STK39-T243A (D), or SLC12A2-deficient B cells (E), stimulated with anti-IgM or CXCL13 or treated with  $MnCl_2$  for the indicated times. (F) Mean  $\pm$  SEM migration of control or WNK1-deficient mouse B cells from the top to the bottom chamber of a Transwell plate in response to CXCL13. (G and H) Violin plots showing mean speed (G) and displacement (H) of control and WNK1-deficient mouse B cells migrating in response to CXCL13. Dashed lines indicate median (red) and 25th and 75th percentiles (gray). (I and J) Mean  $\pm$  SEM migration of mouse B cells treated with either vehicle (DMSO), an inhibitor of WNK family kinases (WNK463; I), or inhibitors of SLC12A2 (bumetanide and azosemide; J) from the top to the bottom chamber of a Transwell plate in response to CXCL13. Two-way ANOVA (A–F, I, and J), Mann–Whitney test (G and H); \*,  $0.01 < P < 0.05$ ; \*\*,  $0.001 < P < 0.01$ ; \*\*\*,  $0.0001 < P < 0.001$ ; \*\*\*\*,  $P < 0.0001$ . Sample sizes: 11 (A); 6 (B); 5 (C); 9 (D); 4 mutant and 6 control (E); 4 mutant and 5 control (F); 5,245 mutant cells and 7,289 control cells (G and H); and 4 (I and J). Data are pooled from two independent experiments.

required for efficient homing of B cells to lymphoid organs (Fig. 3 B). Imaging of unsectioned LNs confirmed that the fewer mutant B cells had entered the tissue and, in comparison with control B cells, WNK1-deficient B cells were more likely to be located in the lumen of blood vessels or in perivascular areas, and less likely to have entered the parenchyma (Fig. 3, C and D; and Video 1). B cells that traffic to the spleen first enter the red pulp and then migrate into the lymphocyte-containing white pulp in response to CXCL13 (Bronte and Pittet, 2013). Histological analysis of the spleen showed that 1 h after transfer, fewer WNK1-deficient B cells were found in both the red and white pulp compared to control B cells, with a relatively larger reduction in the white pulp (Fig. 3, E and F). Taken together, these results show that WNK1 is required for B cells to home efficiently to lymphoid organs and to enter the regions of these tissues harboring lymphocytes.

Once inside the follicles of lymphoid tissue, B cells continue to migrate in response to CXCL13, a process that allows them to scan cells for presentation of cognate antigen (Akkaya et al., 2020; Cyster and Allen, 2019). To evaluate whether WNK1 also regulates this mode of migration, we transferred control or WNK1-deficient B cells into WT mice, waited 24 h, and used multi-photon intravital microscopy (MP-IVM) to measure their migration within follicles (Fig. 3 G). We found that in the absence of WNK1, B cells migrated more slowly, exhibited larger turning angles with reduced track straightness (lower motility coefficient and meandering index) and stopped moving more frequently (increased arrest coefficient; Fig. 3, H–M; and Video 2). Thus, WNK1 regulates B cell migration within lymphoid tissue.

### WNK1 is required for activation of B cells in vitro

Since WNK1 is activated by BCR signaling, it may also contribute to BCR-induced activation, beyond its role in migration and adhesion. To test this possibility, we stimulated control and WNK1-deficient B cells for 3 d with anti-IgM and measured changes in levels of cell surface proteins (activation markers), cytokine secretion, cell division, and cell survival. We extended this analysis to include stimulation of the cells through CD40 and TLR4, by treating cells with CD40L and LPS, respectively.

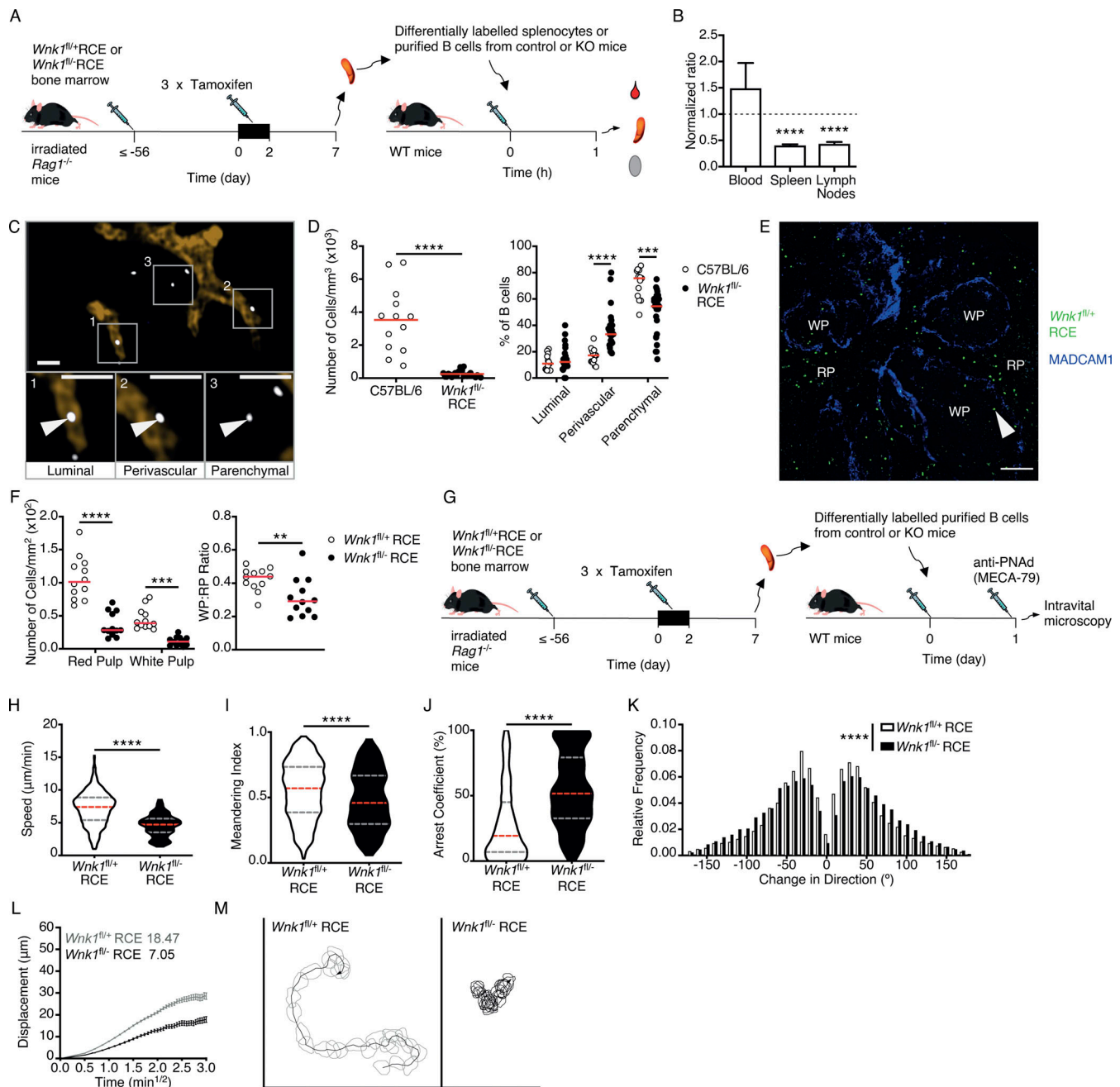
In response to BCR stimulation, both control and WNK1-deficient cells upregulated CD69, CD71, CD80, CD86, CD95, and MHC class II (Fig. S3 A). However, mutant B cells had increased levels of CD80 and decreased levels of MHC class II. In response to CD40L stimulation, both control and WNK1-deficient B cells upregulated CD69, CD80, CD86, CD95, ICOSL, and MHC class II, but the mutant cells had higher levels of CD69, CD80, CD86, and CD95, and reduced levels of ICOSL and MHC class II (Fig. S3 B).

Analysis of cytokine secretion showed that in response to anti-IgM WNK1-deficient B cells secreted normal levels of VEGF-A and IL-10, but higher levels of IL-6 and TNF $\alpha$ , whereas in response to CD40L stimulation, secretion of all four cytokines was unaffected (Fig. S3 C). Thus, in the absence of WNK1, B cells can still be activated by signaling through both the BCR and CD40 but show altered levels of activation markers and cytokines.

In contrast, analysis of cell proliferation showed that WNK1-deficient B cells have greatly reduced cell division in response to either anti-IgM or CD40L stimulation, but normal division in response to LPS (Fig. 4, A and B). WNK1-deficient B cells express unaltered levels of IgM and CD40, so this cannot account for the defects (Fig. S2 G). We observed reduced recovery of live WNK1-deficient B cells after 3 d of stimulation with anti-IgM, CD40L, or LPS compared to control B cells (Fig. 4 C). To distinguish whether this decrease in cell numbers was due to reduced cell division or poorer survival, we calculated numbers of remaining B cells after taking out the effect of cell division. This showed that fewer WNK1-deficient B cells survived in cultures with all three agonists (Fig. 4 D). Taken together, these results show that WNK1 is required for normal cell division in response to BCR and CD40 but not TLR4 stimulation and is required for cell survival during B cell activation.

We extended this analysis to the expression of Ki-67, which is induced when B cells move from the G0 to G1 phase of the cell cycle. Both anti-IgM and CD40L induce Ki-67 expression in B cells with >80% cells becoming Ki-67<sup>+</sup> after 3 d of culture (Fig. 4 E). WNK1-deficient B cells also induce Ki-67 expression, albeit with slower kinetics, and by day 3 of anti-IgM and CD40L stimulation around 50 and 75% of B cells are Ki-67<sup>+</sup>, respectively (Fig. 4 E). Thus, in the absence of WNK1, B cells are delayed in their entry into G1. In a recent study, we showed that WNK1-deficient thymocytes fail to proliferate in response to pre-TCR signals due to defective upregulation of MYC, a transcription factor that induces expression of many proteins required for cell division (Köchl et al., 2020). To investigate if WNK1 plays a similar role in B cells, we measured MYC levels in control and WNK1-deficient B cells in response to anti-IgM and CD40L stimulation. We found that in both cases WNK1-deficient B cells upregulate MYC at least as much as control B cells, suggesting that in B cells WNK1 does not regulate cell division by controlling levels of MYC (Fig. S4, A and B).

To further investigate the mechanism by which WNK1 regulates cell division, we analyzed whether WNK1 kinase activity was required for this process. We found that B cells expressing kinase-inactive WNK1-D368A again had greatly reduced cell division in response to anti-IgM and CD40L stimulation (Fig. 4, F and G). Thus, WNK1 kinase activity is required for



**Figure 3. WNK1 is required for efficient homing of B cells to lymphoid tissues, and migration within them.** (A) Irradiated RAG1-deficient mice were reconstituted with *Wnk1*<sup>fl/+</sup>RCE or *Wnk1*<sup>fl/-</sup>RCE bone marrow. At least 56 d later, the mice were treated with tamoxifen on 3 consecutive days, splenocytes or splenic B cells were harvested 7 d after start of tamoxifen treatment, control and mutant cells were labeled with two different dyes, mixed at a 1:1 ratio, and transferred into WT mice, and 1 h after transfer, blood, spleen, and LNs were analyzed. (B) Mean  $\pm$  SEM ratio of WNK1-deficient mouse B cells to control B cells in blood, spleen, and LNs of mice treated as described in A. (C) Example image from analysis of three-dimensional histology of LNs 40 min after transfer of either WT or WNK1-deficient dye-labeled B cells into C57BL/6 mice, showing how the localization of transferred B cells was categorized as luminal, perivascular, or parenchymal. White boxes 1–3 indicate areas that are enlarged below, and white arrowheads indicate cells that fall into the indicated category. Scale bar, 30  $\mu$ m. (D) Analysis of three-dimensional histology of LNs showing number of cells per mm<sup>3</sup> (left), and relative frequency of B cells in the luminal, perivascular, and parenchymal regions (right), 40 min after transfer of either WT or WNK1-deficient B cells into WT mice. Each dot is data from one mouse; red line indicates mean. (E) Example image from analysis of histology of spleen 1 h after transfer of either control or WNK1-deficient B cells into C57BL/6 mice, showing transferred cells (green, indicated with white arrowhead) and MADCAM1 staining (blue). Cells in the white pulp (WP) were defined as cells within MADCAM1 staining, and cells in red pulp (RP) were defined as outside the MADCAM1 staining. Scale bar, 100  $\mu$ m. (F) Number of B cells/mm<sup>2</sup> in the red and white pulp of the spleen (left), and ratio of cells in the white pulp vs. red pulp (right), of mice treated as described in A and analyzed as in E. (G) Irradiated RAG1-deficient mice were reconstituted with *Wnk1*<sup>fl/+</sup>RCE or *Wnk1*<sup>fl/-</sup>RCE bone marrow. At least 56 d later, the mice were treated with tamoxifen on 3 consecutive days, and splenic B cells were harvested 7 d after the start of tamoxifen treatment and labeled with two different dyes. (H–M) Control and WNK1-deficient B cells were transferred into WT mice, and 24 h later, anti-PNAd (MECA-79) was injected and B cell migration in LN follicles was analyzed by intravital microscopy, with results shown in H–M. (H–J) Violin plots of migration speed (H), meandering index (I), and arrest coefficient (J); dashed lines indicate median.



(red) and 25th and 75th percentiles (gray). **(K)** Relative frequency of change of angle in migration path. **(L)** Mean  $\pm$  SEM displacement of B cells as a function of the square root of time ( $\text{time}^{1/2}$ ); motility coefficients calculated from the slope of the graph are indicated. **(M)** Typical tracks of a control B cell and a WNK1-deficient B cell, showing cell shapes over 15 min. One-sample *t* test (B), Mann–Whitney test (D [left], F [right], H–K), two-way ANOVA (D [right], F [left]); \*\*,  $0.001 < P < 0.01$ , \*\*\*,  $0.0001 < P < 0.001$ , \*\*\*\*,  $P < 0.0001$ . Sample sizes: 8 (B); 13 WT, 26 mutant (D); 12 sections from three mice per genotype (F); and 5,441 WNK1-deficient tracks, 16,196 control tracks (H–L). Data are pooled from two independent experiments.

this activation response. Next, we investigated whether the WNK1 substrates, OXSRI and STK39 are also involved. Analysis of OXSRI-deficient B cells showed that they divided normally in response to anti-IgM and CD40L (Fig. 4, H and I). In contrast, B cells lacking OXSRI that also had the STK39-T243A mutation had a reduction in anti-IgM and CD40L-induced cell division, although the defect was not as large as in WNK1-deficient B cells (Fig. 4, J and K). Thus, STK39 is required for normal anti-IgM- or CD40L-induced proliferation, acting either alone, or redundantly with OXSRI. Finally, we investigated whether SLC12A2 was required for this proliferative response. Inhibition of SLC12A2 with bumetanide had no effect on anti-IgM or CD40L-induced cell division, again potentially because of redundancy between multiple SLC12A family members (Fig. 4, L and M). Taken together these results suggest that BCR and CD40 transduce signals through WNK1 to OXSRI and STK39, which are required for B cells to divide.

#### CD40 signaling activates WNK1

Since WNK1 is required for CD40-induced cell division, we investigated whether signaling from this receptor activates WNK1. Stimulation of B cells through CD40 resulted in a rapid induction of p-OXSRI, peaking around 10 min, which was eliminated by the loss of WNK1 or its kinase activity and was also inhibited by WNK463 (Fig. 4, N–Q). In contrast, the treatment of B cells with LPS did not cause any change in p-OXSRI (Fig. S4 C). Thus, signals from CD40, but not TLR4, induce WNK1 activation. Since both BCR- and CXCR5-induced activation of WNK1 requires PI3K and AKT, we analyzed whether the same was true for CD40. The inhibition of PI3K caused no change in CD40-induced p-OXSRI, whereas inhibition of AKT resulted in a partial reduction of p-OXSRI (Fig. S4 D). We extended this to analysis of IKK2, MEK1, and MEK2, three other kinases known to be activated by CD40 signaling (Gantke et al., 2012). As expected, inhibition of IKK2 resulted in loss of CD40L-induced phosphorylation of p105 (NF- $\kappa$ B1) which is a direct target of IKK2 and a loss of phosphorylation of ERK2, which is activated by an IKK2-p105-TPL2-MEK pathway (Gantke et al., 2012; Fig. S4 E). Furthermore, the inhibition of MEK1 and MEK2 resulted in loss of CD40L-induced p-ERK2. However, the inhibition of neither IKK2 nor MEK1 and MEK2 affected CD40L-induced p-OXSRI (Fig. S4 E). We conclude that, unlike BCR and CXCR5, CD40 does not activate WNK1 via PI3K, IKK2, MEK1, or MEK2, and is only partially dependent on AKT.

#### WNK1-deficient B cells activate T cells less efficiently in vitro

In view of the defective BCR- and CD40-induced cell division and altered levels of cell surface proteins that are involved in B cell–T cell communication (CD80, CD86, ICOSL, and MHC class II), we investigated whether WNK1 was required for cognate B cell–T cell interaction and activation. We treated control or

WNK1-deficient B cells with beads coated with anti-IgM antibodies and ovalbumin (OVA), washed out unbound beads and cultured the B cells with OVA-specific OT-II CD4<sup>+</sup> T cells for 1–3 d. In this assay, crosslinking of the BCR results in the internalization of anti-IgM and OVA-coated beads and the B cells present the OVA 323–339 peptide (OVA<sub>323–339</sub>) on surface MHC class II molecules. These peptide–MHC complexes bind to the TCR on OT-II T cells, triggering the formation of B–T conjugates, and activation and division of the T cells (Fig. 5 A). In control cultures where the B cells were given no beads (Fig. 5 B), or beads coated in just anti-IgM or just OVA, or no B cells were present (data not shown), the OT-II T cells did not respond, as measured by upregulation of activation markers (CD25, CD44, CD69) and division. In contrast, in cultures containing WNK1-expressing B cells given beads coated with anti-IgM and OVA, T cells upregulated activation markers and started to divide, demonstrating that T cell activation in this assay requires cognate antigen-driven B cell–T cell interaction (Fig. 5 B). Notably, in cultures containing WNK1-deficient B cells, the T cells showed lower induction of activation markers, and fewer started to divide. Thus, in the absence of WNK1 in B cells, B–T collaboration is severely impaired.

A key event in B–T collaboration is the formation of conjugates in response to presentation of cognate antigen by the B cells to the T cells, a process which is dependent on integrin-mediated adhesion. Peptide–MHC complexes on B cells bind to the TCR on cognate T cells causing the activation of the LFA-1 integrin on T cells which binds to ICAM-1 and ICAM-2 on B cells, resulting in adhesion and hence the formation of B–T conjugates (Zaretsky et al., 2017). Since loss of WNK1 results in increased LFA-1 activation on B cells, and T cells express the ICAM-1 and ICAM-2 ligands, we hypothesized that WNK1-deficient B cells may adhere more tightly to T cells using LFA-1 on B cells interacting with ICAM on T cells, the inverse of the normal direction of this integrin-mediated adhesion (LFA-1 on T cells, ICAM on B cells), and that this might result in more efficient formation of B–T conjugates. However, we found no difference in the efficiency of conjugate formation between control and WNK1-deficient B cells (Fig. 5 C). Once antigen is bound by the BCR, it is internalized by the B cell, degraded, and presented on MHC class II molecules. The analysis of these steps showed that loss of WNK1 did not adversely affect antigen internalization or degradation but caused a partial decrease in the amount of antigen presented on class II molecules (Fig. 5, D–F). Thus, the defective collaboration of WNK1-deficient B cells with T cells may be due in part to reduced antigen presentation.

#### WNK1-deficient B cells fail to mount T-dependent and -independent antibody responses

To evaluate the effect of loss of WNK1 on T-dependent antibody responses, we reconstituted irradiated RAG1-deficient mice with



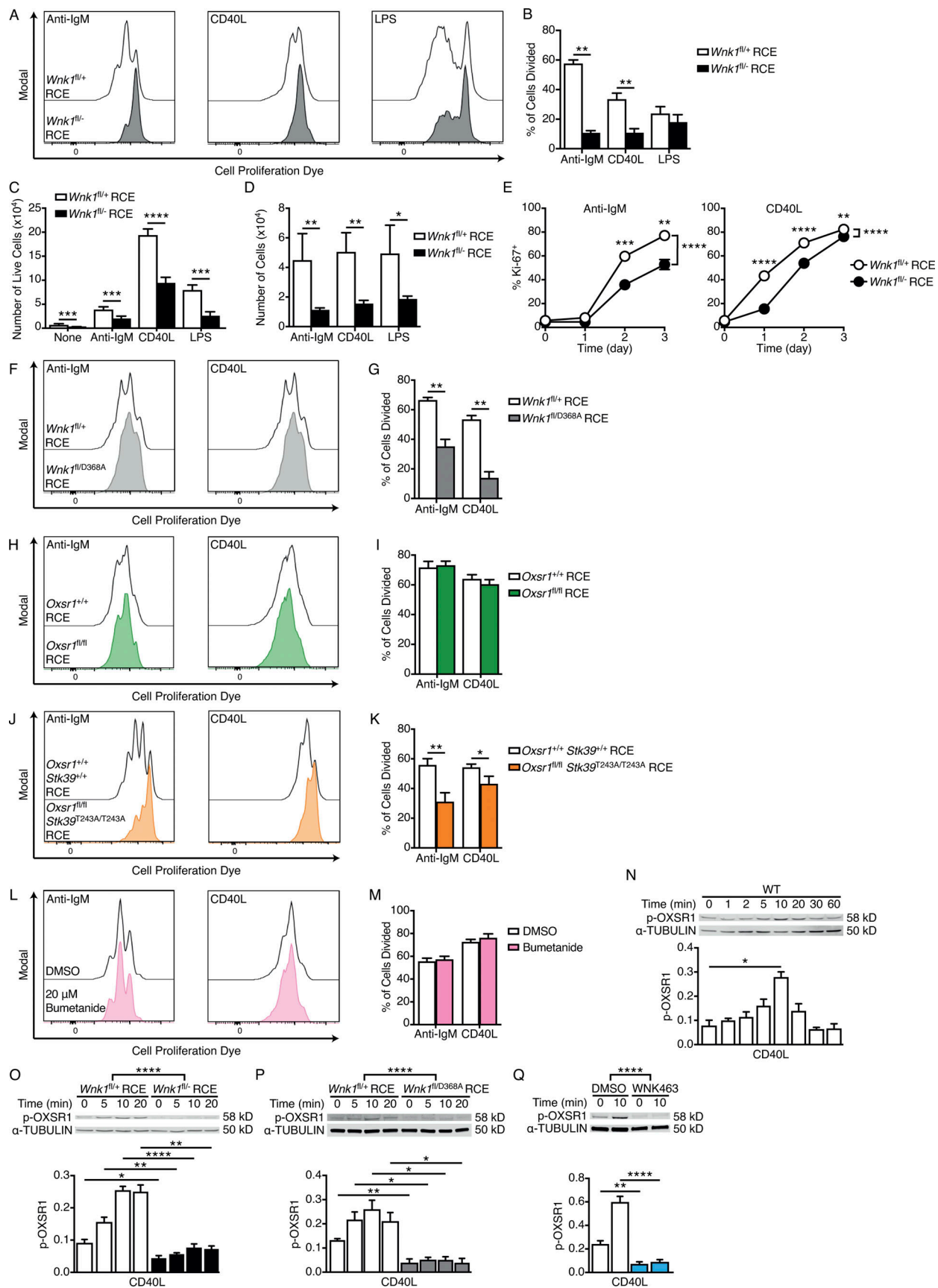


Figure 4. **WNK1 is required for BCR- and CD40-induced B cell proliferation in vitro.** (A and B) B cells of the indicated genotypes labeled with CPD were cultured for 72 h in the presence of anti-IgM, CD40L, or LPS. (A) Representative histograms of CPD fluorescence measured by flow cytometry; cell division

results in dye dilution. **(B)** Mean  $\pm$  SEM percentage of B cells that have divided at least once after 72 h stimulation with either anti-IgM, CD40L, or LPS. **(C)** Mean  $\pm$  SEM number of live control or WNK1-deficient B cells after 72 h culture with the indicated stimuli. **(D)** Mean  $\pm$  SEM number of cells after 72 h culture if there had been no division. **(E)** Mean  $\pm$  SEM percentage of Ki-67<sup>+</sup> B cells after stimulation with anti-IgM or CD40L for the indicated times. **(F–M)** CPD-labeled B cells of the indicated genotypes (F–K), or WT B cells treated with bumetanide or vehicle control (L and M), were labeled with CPD and cultured for 72 h in the presence of anti-IgM or CD40L. **(F, H, J, and L)** Histograms of CPD fluorescence. **(G, I, K, and M)** Mean  $\pm$  SEM percentage of B cells that have divided at least once after 72 h in response to the indicated stimuli. **(N–Q)** Top: Immunoblots of total cell lysates from mouse B cells stimulated for the indicated times with CD40L using WT B cells (N), WNK1-deficient or control B cells (O), B cells expressing kinase-inactive WNK1-D368A or control B cells (P), or WT B cells treated with vehicle (DMSO), or an inhibitor of WNK family kinases (WNK463; Q), probed with antibodies to p-OXSRI or  $\alpha$ -TUBULIN. Bottom: Graphs of mean  $\pm$  SEM abundance of p-OXSRI in the lanes above, normalized to  $\alpha$ -TUBULIN. Mann–Whitney test (B–D, G, I, K, and N), two-way ANOVA (E and O–Q); \*, 0.01 < P < 0.05; \*\*, 0.001 < P < 0.01; \*\*\*, 0.0001 < P < 0.001; \*\*\*\*, P < 0.0001. Sample sizes: 5 WNK1-deficient, 6 control (B and D); 9 WNK1-deficient, 15 control (C); 7 WNK1-deficient, 6 control (E); 4 WNK1-D368A, 6 control (G); 6 (I and M); 7 (K); 4 (N); and 5 (O–Q). Data are pooled from two (B, D, E, G, I, and K–Q) or three (C) independent experiments. Source data are available for this figure: SourceData F4.

a mixture of  $\mu$ MT bone marrow (80%) which is unable to generate B cells (Kitamura et al., 1991) and either *Wnk1*<sup>fl/+</sup>RCE or *Wnk1*<sup>fl/-</sup>RCE bone marrow (20%; Fig. 6 A). Treatment of the resulting mixed radiation chimeras with tamoxifen results in mice with either WNK1-expressing or WNK1-deficient B cells, whereas most other cells express WNK1. 7 d after the start of tamoxifen treatment, the mice were immunized with 4-hydroxy-3-nitrophenylacetyl (NP)-conjugated chicken gamma globulin (NP-CGG) in alum, a T-dependent antigen, and blood and splenocytes were analyzed over the following 28 d (Fig. 6 A). WNK1-deficient B cells were severely impaired in their ability to form NP-specific GCB cells and plasma cells and generated greatly reduced levels of NP-specific IgM and IgG1 in the serum (Fig. 6, B and C; and Fig. S5 A). Thus, WNK1 is required in B cells for T-dependent antibody responses.

Since the loss of WNK1 results in lower numbers of B cells (Fig. S2 C), this could contribute to the reduced antibody response. To evaluate the role of WNK1 without this reduced number of B cells, we used the *Aicda*-Cre transgene to delete *Wnk1*, since this is only induced in B cells once they are activated. We immunized *Wnk1*<sup>fl/+</sup>*Aicda*-Cre or *Wnk1*<sup>fl/-</sup>*Aicda*-Cre mice with CGG or NP-CGG in alum and analyzed the resulting immune response (Fig. 6 D). We found that loss of WNK1 in activated B cells resulted in a large reduction of NP-specific GCB cells and plasma cells (Fig. 6 E and Fig. S5 B). Notably, around 70% of the few remaining GCB cells did not express human CD2, a marker of expression of the *Aicda*-Cre transgene, implying that these were cells that had most likely not deleted the *Wnk1* gene, further emphasizing the critical role of WNK1 in the differentiation of naive mature B cells into GCB cells (Fig. 6 F and Fig. S5 B). Moreover, in the absence of WNK1 in activated B cells, the levels of NP-specific IgG1 were reduced (Fig. 6 G), although there was no effect on the levels of NP-specific IgM, most likely because this is generated early in the immune response before the B cells lost WNK1. These results show a cell-intrinsic requirement for WNK1 in B cells for differentiation into GCB cells and plasma cells during a T-dependent immune response.

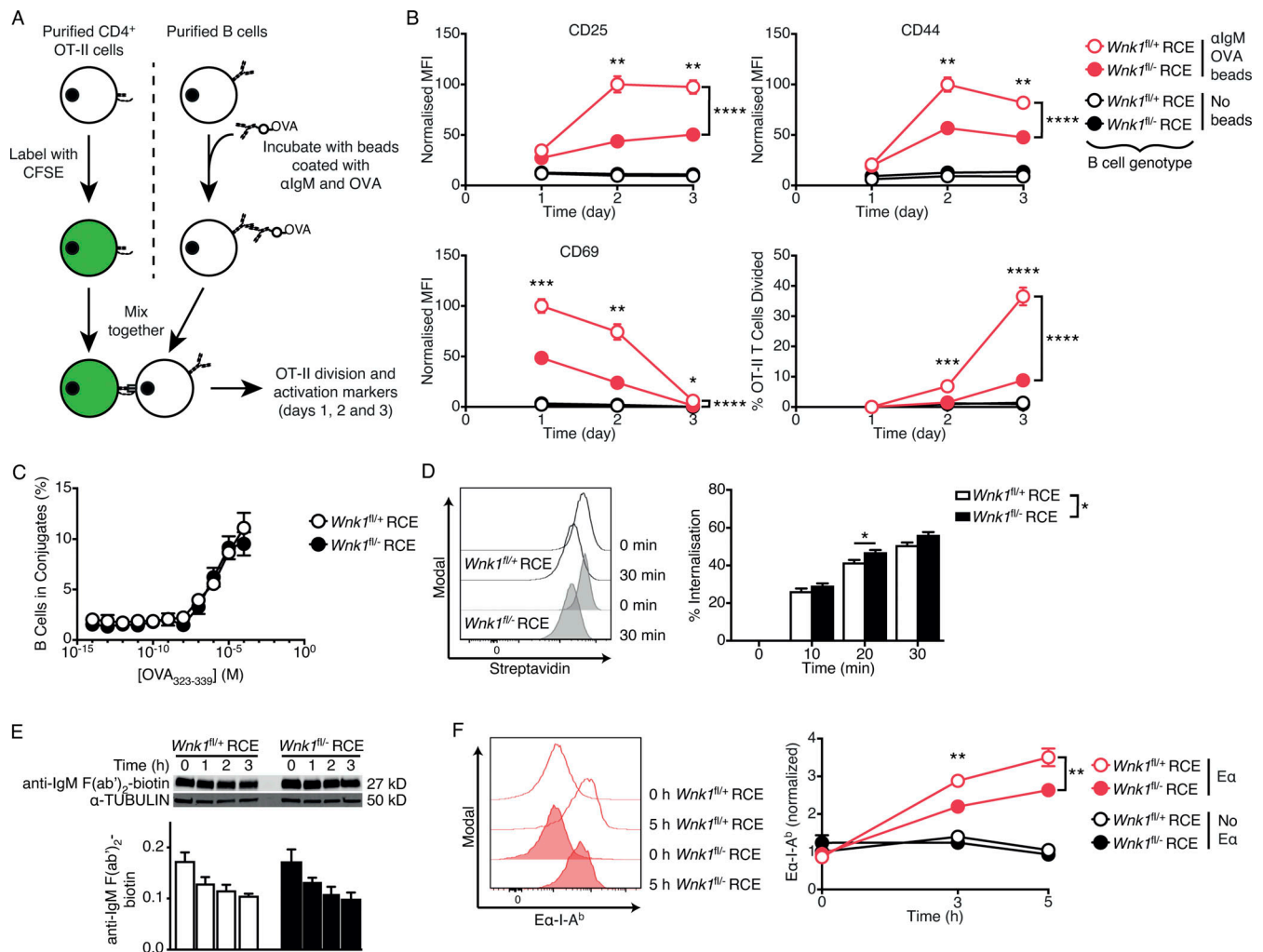
To evaluate whether the requirement for WNK1 in B cells was selective for T-dependent B cell responses or was also a feature of T-independent responses, we transferred control and WNK1-deficient B cells into  $\mu$ MT mice and then immunized the animals with TNP-Ficoll, a T-independent antigen (Fig. 6 H). The analysis of TNP-specific IgM and IgG3 in these animals over the

subsequent 28 d showed a substantial response in response in mice that had received control B cells and no detectable anti-TNP antibodies in mice with WNK1-deficient B cells (Fig. 6 I). Thus, WNK1 is also required in B cells for T-independent antibody responses.

### B cells require WNK1 to collaborate efficiently with T cells in vivo

To understand the role of WNK1 in the early phases of the antibody response, we treated control or WNK1-deficient B cells with beads coated with anti-IgM antibodies, OVA or both and transferred them into mice that had been immunized 3 d earlier with OVA in alum to provide activated cognate T cells (Fig. 7 A). Analysis 3 d later showed that B cells treated with beads containing both anti-IgM and OVA responded by upregulating CD69, CD80, CD86, CCR7, ICOSL, and MHC class II, as well as inducing expression of Ki-67 and dividing (Fig. 7, B and C; and Fig. S5 C). Little or no response was seen when B cells were given beads coated with just anti-IgM or just OVA, confirming that these responses depend on cognate-antigen driven B cell–T cell interactions. By contrast WNK1-deficient B cells given beads coated with anti-IgM and OVA showed reduced levels of CD69, CD86, CCR7, ICOSL, MHC class II, and Ki-67, and fewer of them had divided. Thus, B cells require WNK1 to upregulate cell surface markers and to divide during B cell activation in response to cognate T cell help in vivo.

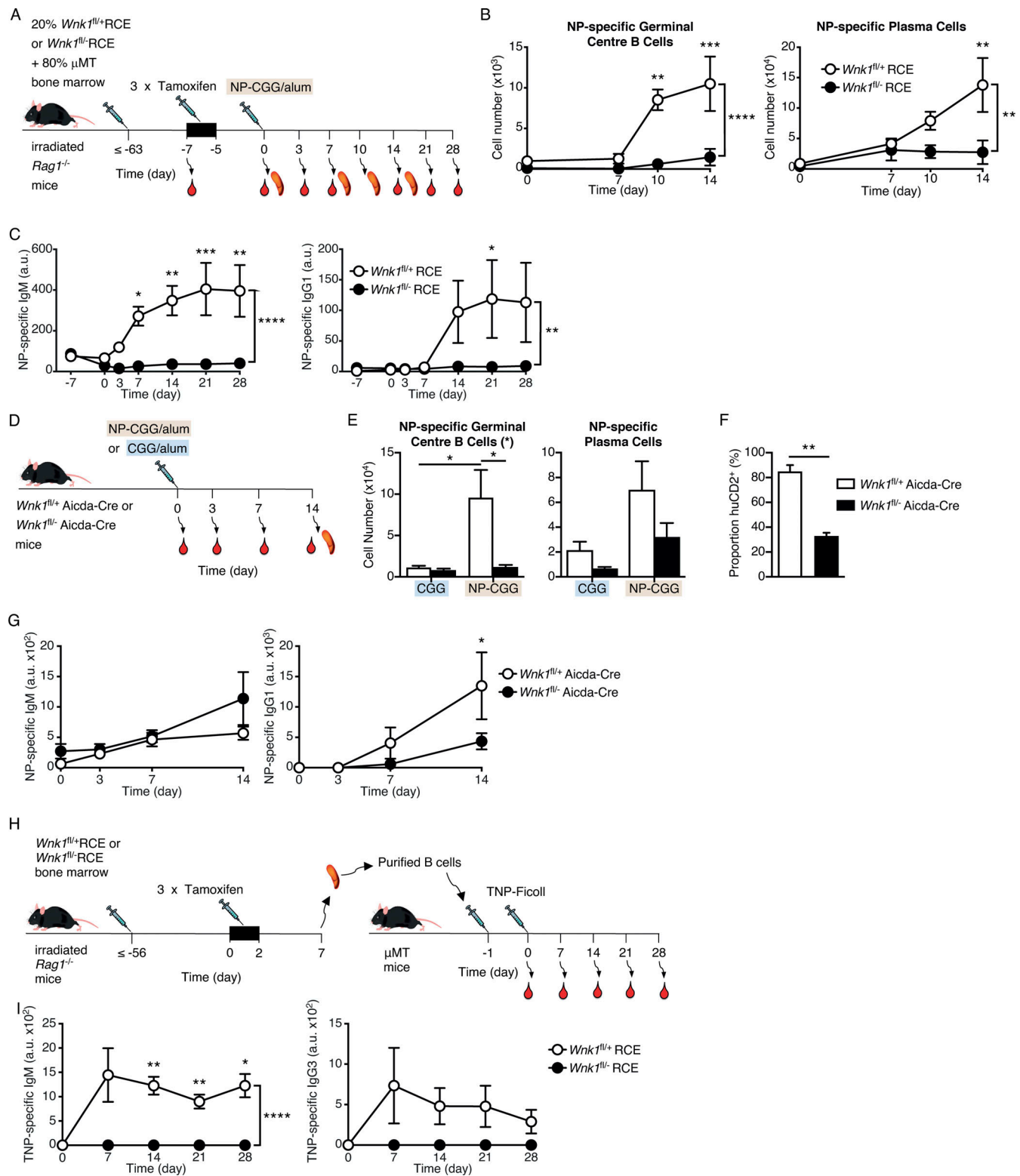
These defects in B cell activation could stem from a failure of the B cells to move to the border of the follicle where they can encounter cognate T cells. Alternatively, they may result from impaired interactions with T cells, or defective responses to T cell help. To distinguish these possibilities, we examined the behavior of WNK1-deficient B cells in vivo during this early activation phase using MP-IVM. Using B cells expressing the MD4 hen egg lysozyme (HEL)-specific BCR, we transferred dye-labeled WNK1-expressing and WNK1-deficient B cells along with GFP<sup>+</sup> OVA-specific OT-II CD4<sup>+</sup> T cells and polyclonal CD4<sup>+</sup> T cells into mice that had been immunized a day earlier with HEL-OVA in alum in the hock (Fig. 7 D). 1 d later, we used four-color MP-IVM to image the transferred lymphocytes at the B cell follicle–T cell zone border in the draining popliteal LN. The results showed reduced numbers of WNK1-deficient B cells at the B–T border (Fig. 7 E), and those that were there migrated more slowly (Video 3 and Fig. 7, F and G). These results suggest that activated WNK1-deficient B cells migrate less efficiently to the



**Figure 5. B cells require WNK1 to collaborate efficiently with T cells in vitro.** (A) Purified CD4<sup>+</sup> from OT-II mice were labeled with CFSE and cultured with control or WNK1-deficient B cells that have or have not been incubated with beads coated in anti-IgM and OVA for 24, 48, and 72 h, and activation marker upregulation and cell division was measured using flow cytometry. (B) Mean ± SEM normalized median fluorescence intensity (MFI) of CD25, CD44, and CD69, and percentage of cells that have divided at least once (bottom right), of OT-II CD4<sup>+</sup> T cells cultured for the indicated times with control (open circles) or WNK1-deficient (filled circles) B cells that have been previously incubated with beads coated in anti-IgM and OVA (red) or not incubated with beads (black). MFI was normalized to the maximal response of each individual activation marker (set to 100). (C) Mean ± SEM percentage of control or WNK1-deficient B cells that formed conjugates with OT-II T cells as a function of concentration of OVA<sub>323-339</sub> peptide. (D) B cells of the indicated genotypes were incubated with biotinylated anti-kappa F(ab')<sub>2</sub> for the indicated times and residual biotin on the surface revealed with streptavidin as a measure of internalization. Histograms (left) show streptavidin binding; graph (right) shows mean ± SEM percentage internalization of the antibody. (E) Immunoblot analysis (top) of total cell lysates from control or WNK1-deficient mouse B cells incubated with biotinylated anti-IgM F(ab')<sub>2</sub> for the indicated times, probed with streptavidin to detect biotin, or with an antibody to α-TUBULIN. Graph (bottom) shows mean ± SEM abundance of biotinylated anti-IgM F(ab')<sub>2</sub> in the lanes above, normalized to α-TUBULIN; no significant difference was seen between genotypes (two-way ANOVA). (F) Histograms (left) of levels of Eα peptide on I-A<sup>b</sup> MHC class II on surface of control or WNK1-deficient B cells incubated with Eα peptide-anti-IgM conjugates for the indicated times. Graph (right) shows mean ± SEM normalized MFI of Eα-I-A<sup>b</sup> complex normalized to levels of I-A<sup>b</sup> MHC class II and to control Eα sample at 0 h (set to 1) as a measure of antigen presentation of control (open circles) or WNK1-deficient (filled circles) B cells incubated with beads coated with anti-IgM and Eα (Eα, red) or just anti-IgM (no Eα, black). Two-way ANOVA (C-E), three-way ANOVA (B and F); \*, 0.01 < P < 0.05; \*\*, 0.001 < P < 0.01; \*\*\*, 0.0001 < P < 0.001; \*\*\*\*, P < 0.0001. Sample sizes: 7 WNK1-deficient, 10 control (B); 6 (C and E), 8 (D); and 7 (F). Data are pooled from two independent experiments. Source data are available for this figure: SourceData F5.

B-T border. The analysis of B cell-T cell interactions showed that WNK1-expressing MD4 B cells made short duration contacts with OT-II T cells (Video 4 and Fig. 7, H and I), typical of cognate B-T interactions (Okada et al., 2005; Qi et al., 2008), but not with polyclonal CD4 T cells (not shown). In contrast, the few WNK1-deficient B cells at the B-T border demonstrated altered dynamics, making significantly longer contacts with OT-II T cells, potentially because of their increased integrin-mediated

adhesion. Thus, during antigen-driven activation, WNK1-deficient B cells are defective in homing to the B-T border, move more slowly at the border, and make longer interactions with cognate T cells. These changes in the behavior of WNK1-deficient B cells, together with defective CD40-induced responses and reduced antigen presentation are likely to jointly contribute to their profoundly impaired activation, proliferation, and subsequent differentiation into GCB cells and plasma



**Figure 6. WNK1-deficient B cells fail to mount T-dependent and independent antibody responses.** (A) Irradiated RAG1-deficient mice were reconstituted with a mixture of *Wnk1<sup>fl/+</sup>*RCE or *Wnk1<sup>fl/-</sup>*RCE bone marrow (20%) and  $\mu$ MT marrow (80%). At least 56 d later, blood was taken from the mice and they were treated with tamoxifen on 3 consecutive days, immunized with NP-CGG in alum 7 d after start of tamoxifen treatment, and blood and/or spleen were analyzed 0, 3, 7, 10, 14, 21 and 28 d later. (B and C) Graphs of mean  $\pm$  SEM numbers of splenic NP-specific GCB cells and plasma cells (B) and mean  $\pm$  SEM serum levels of NP-specific IgM and IgG1 (C) in mice treated as described in A. (D) *Wnk1<sup>fl/+</sup>*Aicda-Cre or *Wnk1<sup>fl/-</sup>*Aicda-Cre mice were immunized with NP-CGG or CGG in alum and analyzed 0, 3, 7, and 14 d later. (E–G) Mean  $\pm$  SEM numbers of splenic NP-specific GCB cells and plasma cells (E), mean  $\pm$  SEM proportion of GCB cells that were *hCD2<sup>+</sup>*, a marker of Cre expression (F), and mean  $\pm$  SEM serum levels of NP-specific IgM and IgG1 (G) in mice treated as in D. (H) Irradiated RAG1-deficient mice were reconstituted with *Wnk1<sup>fl/+</sup>*RCE or *Wnk1<sup>fl/-</sup>*RCE bone marrow. At least 56 d later, the mice were treated with tamoxifen on 3 consecutive days, and



splenic B cells were harvested 7 d after start of tamoxifen treatment and transferred into  $\mu$ MT mice. 1 d later, the mice were immunized with TNP-Ficoll, and blood was analyzed 0–28 d later. (I) Mean  $\pm$  SEM serum levels of TNP-specific IgM and IgG3 in mice treated as in H. Two-way ANOVA (B, C, E, G, and I), Mann–Whitney test (F); \*,  $0.01 < P < 0.05$ ; \*\*,  $0.001 < P < 0.01$ ; \*\*\*,  $0.0001 < P < 0.001$ ; \*\*\*\*,  $P < 0.0001$ . Sample sizes: three to four (B); four to six (C); four to five (E and F); five (G); and seven control and six mutant (I). Data are from two (B, C, and E–G) or three (I) independent experiments.

cells, and hence their inability to support T-dependent antibody responses.

## Discussion

We have discovered a previously unknown signaling pathway in B cells involving the kinase WNK1. Using a wide variety of in vitro and in vivo techniques, we found that WNK1 is a critical regulator of multiple aspects of B cell physiology. WNK1 is rapidly activated by signaling from the BCR, CXCR5, and CD40, regulates B cell migration, adhesion, antigen presentation, proliferation, and survival, and in its absence from B cells, T-dependent and T-independent antibody responses are strongly inhibited.

Signaling from the BCR and CXCR5 activates WNK1 via PI3K and AKT, and CD40-induced WNK1 activation is partially AKT dependent. AKT may directly regulate WNK1, and indeed AKT phosphorylates WNK1 on Thr60 (Jiang et al., 2005; Vitari et al., 2004). However, this phosphorylation does not affect WNK1 in vitro kinase activity, or its cellular localization. Thus, it remains unclear how signaling from AKT regulates WNK1 activity, and the identity of other regulators of WNK1 remain unknown.

We found that WNK1 is a positive regulator of CXCR5-induced migration of naive B cells and that the WNK1-OXSRI-STK39 pathway negatively regulates BCR- and CXCR5-induced activation of adhesion through LFA-1 and VLA-4 integrins. WNK1-deficient T cells have higher levels of active RAP1, a GTPase which is involved in inside-out integrin activation (Alon and Feigelson, 2012). WNK1 may also regulate RAP1 in B cells. It is unknown how the WNK1-OXSRI-STK39 pathway regulates RAP1 activity, but it may act directly or indirectly on RAP1 guanine nucleotide exchange factors or RAP1 GTPase-activating proteins.

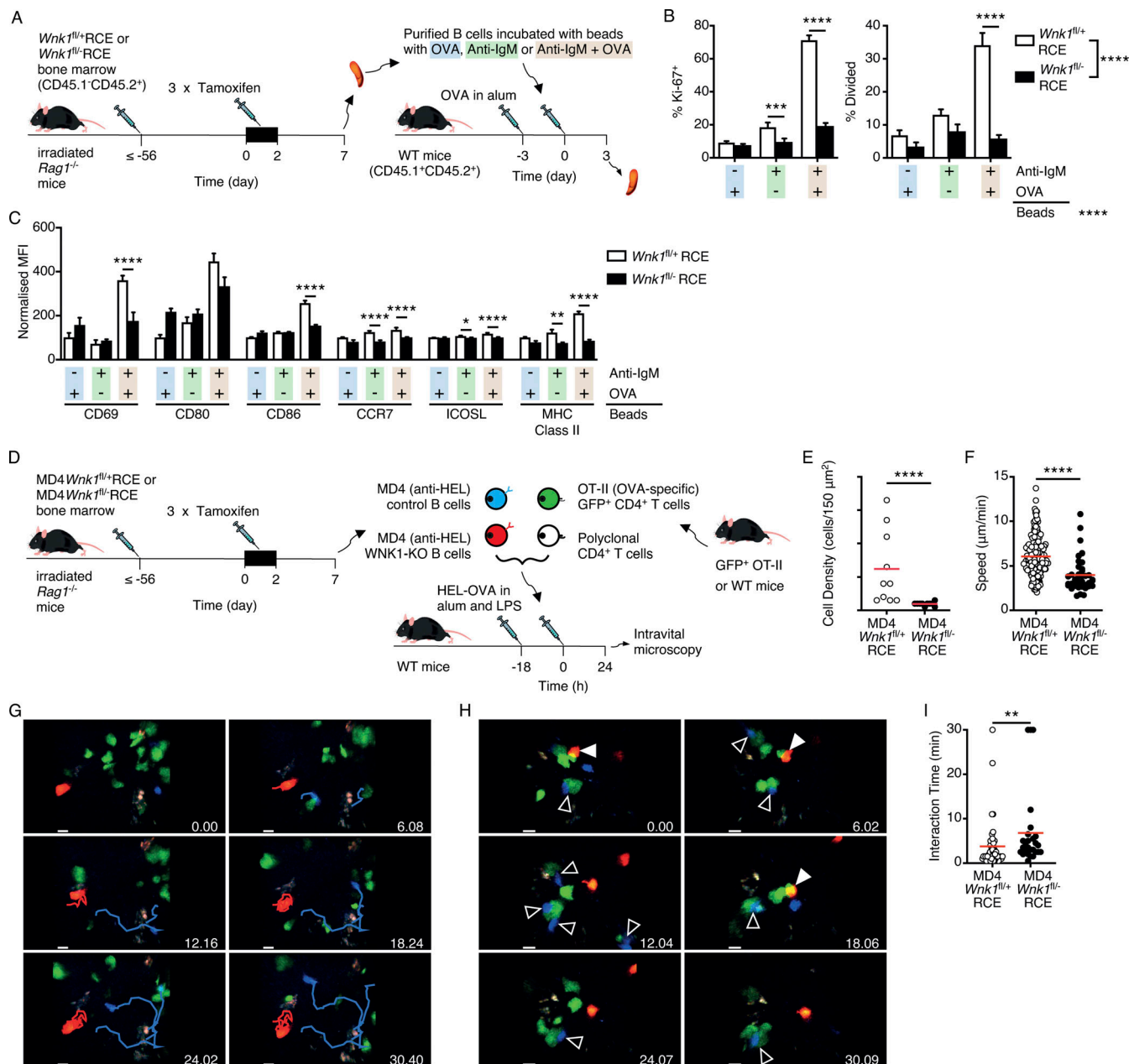
Unexpectedly, we discovered that WNK1 is required for BCR- and CD40-induced B cell proliferation. This requirement for WNK1 in B cell proliferation is dependent on its kinase activity and is most likely transduced through OXSRI and STK39 since mutations in these two related kinases resulted in a phenotype similar to WNK1 deficiency. Previous cell line studies reported that WNK1 regulates cell division (Sun et al., 2006; Tu et al., 2011) and our own work in thymocytes showed that WNK1 is required for pre-TCR-induced upregulation of MYC and hence proliferation of thymocytes at the  $\beta$ -selection checkpoint (Köchl et al., 2020). However, the defective proliferation of WNK1-deficient B cells must be due to another mechanism since they upregulate MYC normally.

Some of the best characterized substrates of the WNK1-OXSRI-STK39 pathway are the SLC12A family of ion co-transporters (Shekarabi et al., 2017). The activation of WNK1 leads to phosphorylation and activation of OXSRI and STK39, which directly phosphorylate multiple SLC12A family proteins

resulting in activation of co-transporters that allow influx of  $\text{Na}^+$ ,  $\text{K}^+$ , and  $\text{Cl}^-$  and inhibition of co-transporters that mediate efflux of  $\text{K}^+$  and  $\text{Cl}^-$  ions. It is possible that the requirement for the WNK1-OXSRI-STK39 pathway in BCR- and CD40-induced B cell activation stems from a need for regulated ion import into the cell, or subsequent water movement, especially as division and migration both require changes, either globally or locally, in cell volume. We found that loss of SLC12A2 or its inhibition did not affect B cell migration, adhesion, or agonist-induced proliferation. However, since B cells express four other SLC12A family members, it is possible that there is redundancy of function between these ion co-transporters. In particular, the expression of SLC12A6 (KCC3) is highest at the transcriptional level, making it a good target for future studies. Nonetheless, these may be challenging given the potential redundancy between members of this family of ion co-transporters.

Using an in vitro antigen-specific co-culture system, we showed that loss of WNK1 impairs the ability of B cells to activate cognate T cells, potentially due to reduced antigen presentation. While WNK1-deficient B cells internalized and degraded antigen normally, they presented less antigenic peptide on cell surface MHC II molecules. This implies that loss of WNK1 may affect the loading of antigenic peptides onto MHC II molecules in the late endosomal-lysosomal antigen-processing compartment, or subsequent trafficking of peptide-MHC II complexes to the surface (Roche and Furuta, 2015). Several studies have shown that WNK1 regulates vesicle exocytosis and trafficking of membrane proteins to the cell surface (Henriques et al., 2020; Kim et al., 2018; Lee et al., 2004; Mendes et al., 2010; Oh et al., 2007). It will be interesting to investigate whether WNK1 regulates exocytosis of peptide-loaded MHC II molecules.

Strikingly, we have shown a B cell-intrinsic requirement for WNK1 in T-dependent antibody responses. WNK1 is required for B cells to receive T cell help and differentiate into GCB cells and plasma cells, because WNK1 regulates B cell migration to the B-T border and communication between B cells and  $\text{CD4}^+$  T cells. We observed that WNK1-deficient B cells made longer lasting interactions with T cells compared to control B cells. The adhesive interactions between cognate B and T cells are normally mediated by LFA-1 on T cells binding to ICAM-1 and ICAM-2 on B cells (Zaretsky et al., 2017), and further stabilized by SLAM family interactions (Cannons et al., 2010; Qi et al., 2008; Wu and Veillette, 2016). Interestingly, the increased interaction between WNK1-deficient B cells and cognate T cells may be caused by the hyperadhesive LFA-1 on B cells interacting with ICAM-1 and ICAM-2 on T cells, the reverse of the normal integrin-mediated interaction between B and T cells. WNK1 may also be a critical regulator of GCB cell function since migration and cell-cell interactions are required for GCB differentiation to memory B and plasma cells, both of which provide



**Figure 7. Defective activation of WNK1-deficient B cells by cognate T cells in vivo.** (A) Irradiated RAG1-deficient mice were reconstituted with *Wnk1*<sup>fl/+</sup>RCE or *Wnk1*<sup>fl/fl</sup>RCE bone marrow (CD45.1<sup>-</sup>CD45.2<sup>+</sup>). At least 56 d later, the mice were treated with tamoxifen on 3 consecutive days, and splenic B cells were harvested 7 d after start of tamoxifen treatment, labeled with CMFDA, and incubated with beads coated in anti-IgM and OVA, just anti-IgM, or just OVA. The labeled B cells were transferred into WT mice (CD45.1<sup>-</sup>CD45.2<sup>+</sup>) that had been immunized with OVA in alum 3 d earlier. 3 d after transfer, spleens were harvested and analyzed for activation markers and division by flow cytometry. (B) Mean ± SEM percentage of transferred control or WNK1-deficient B cells from mice treated as described in A that express Ki-67 (left) or have divided at least once (right). (C) Mean ± SEM MFI of the indicated cell surface proteins on transferred control or WNK1-deficient B cells from mice treated as described in A, normalized to the levels on control B cells incubated with beads coated in just OVA (set to 100). (D) Irradiated RAG1-deficient mice were reconstituted with MD4 *Wnk1*<sup>fl/+</sup>RCE or MD4 *Wnk1*<sup>fl/fl</sup>RCE bone marrow. At least 56 d later, the mice were treated with tamoxifen on 3 consecutive days, and splenic B cells were harvested 7 d after the start of tamoxifen treatment, dye-labeled, and transferred into C57BL/6 mice that had been immunized in the hock with HEL-OVA in alum and LPS 18 h earlier, along with GFP<sup>+</sup> OT-II CD4<sup>+</sup> T cells and dye-labeled polyclonal CD4<sup>+</sup> T cells. 1 d later, the labeled cells were imaged at the B-T border in the draining popliteal LNs by MP-IVM. Results are shown in E–I. (E) Density of B cells of the indicated genotype in a 150 μm<sup>2</sup> field of view. (F) Migration speed; each point represents a single B cell. (G) Time-lapse images showing migration paths of WNK1-expressing (blue) and WNK1-deficient (red) MD4 B cells. Scale bar, 10 μm. (H) Time-lapse images showing interaction of WNK1-expressing (blue, open arrow) or WNK1-deficient (red, filled arrow) MD4 B cells with OT-II T cells (green); polyclonal T cells not shown. Scale bar, 10 μm. (I) Graph of interaction times of MD4 B cells with OT-II T cells. Red lines indicate mean. Two-way ANOVA (B and C), Mann-Whitney test (E, F, and I); \*, 0.01 < P < 0.05; \*\*, 0.001 < P < 0.01; \*\*\*, 0.0001 < P < 0.001; \*\*\*\*, P < 0.0001. Sample sizes: 7–8 (B and C); 10 fields of view (E); 235 control and 38 mutant cells (F); and 46 control and 27 mutant B cells (I). Data are pooled from two independent experiments.

protection during reinfection. It will be important to further explore how WNK1 regulates humoral responses as this may reveal novel pathways that could be manipulated to improve vaccine responses or suppress generation of pathogenic autoantibodies.

## Materials and methods

### Mice

Mice with a conditional allele of *Wnk1* containing loxP sites flanking exon 2 (*Wnk1*<sup>tm1Clhu</sup>, *Wnk1*<sup>fl</sup>), with a deletion of exon 2 of *Wnk1* (*Wnk1*<sup>tm1Clhu</sup>, *Wnk1*<sup>-</sup>), with a kinase inactive allele of *Wnk1* (*Wnk1*<sup>tm1.1Tyb</sup>, *Wnk1*<sup>D368A</sup>), with a conditional allele of *Oxsr1* containing loxP sites flanking exons 9 and 10 (*Oxsr1*<sup>tm1.1Ssy</sup>, *Oxsr1*<sup>fl</sup>), expressing STK39-T243A (*Stk39*<sup>tm1.1Arte</sup>, *Stk39*<sup>T243A</sup>), with a null allele of *Slc12a2* (*Slc12a2*<sup>tm1Ges</sup>, *Slc12a2*<sup>-</sup>), with a conditional allele of *Syk* containing loxP sites flanking exon 11 (*Syk*<sup>tm1.1Nns</sup>, *Syk*<sup>fl</sup>), with a tamoxifen-inducible Cre in the ROSA26 locus (*Gt(ROSA)26Sor*<sup>tm1(cre/ESR1)Thl</sup>, *ROSA26*<sup>CreERT2</sup>, RCE), with a tamoxifen-inducible Cre in the *Cd79a* locus (*CD79a*<sup>tm3(cre/ERT2)Reth</sup>, mb1-CE) with a transgenic Cre recombinase under the control of the *Aicda* promoter followed by an internal ribosome entry site and a truncated human CD2 sequence (Tg(*Aicda*-cre)9Mbu, *Aicda*-Cre), with a transgene encoding a T cell receptor that recognizes chicken OVA residues 323-339 in the context of I-A<sup>b</sup> (Tg(*Tcr*aTcrb)425Cbn, OT-II), with a transgene expressing GFP under the control of the human ubiquitin C promoter (Tg(UBC-GFP)30Scha, UBC-GFP), with a transgene encoding a B cell receptor that recognizes HEL (Tg(*Igh*elMD4)4Ccg, MD4), deficient for the transmembrane region of the heavy chain of IgM (*Ighm*<sup>tm1Cgn/tm1Cgn</sup>,  $\mu$ MT), or deficient for RAG1 (*Rag1*<sup>tm1Mom/tm1Mom</sup>, *Rag1*<sup>-/-</sup>) have been described before (Barnden et al., 1998; de Luca et al., 2005; Flagella et al., 1999; Goodnow et al., 1988; Hobeika et al., 2015; Kitamura et al., 1991; Köchl et al., 2016; Kwon et al., 2008; Lin et al., 2011; Mombaerts et al., 1992; Rafiqi et al., 2010; Schaefer et al., 2001; Schweighoffer et al., 2013; Xie et al., 2009). OT-II and UBC-GFP mice were intercrossed to generate GFP<sup>+</sup> OT-II mice. All strains were bred on a C57BL/6J background. These genetically altered mice, C57BL/6J (WT) mice and (B6  $\times$  B6.SJL)F1 mice were maintained in specific pathogen-free conditions at the Medical Research Council National Institute for Medical Research and then at the Francis Crick Institute. Both sexes of mice were used, but in each experiment, control and experimental animals were always matched in sex. All animal experiments were carried out under the authority of a Project Licence granted by the UK Home Office and approved by the Animal Welfare Ethical Review Body of the Francis Crick Institute (UK), or animal studies were approved by the Cantonal Committees for Animal Experimentation and conducted according to federal guidelines (Switzerland).

### Radiation chimeras

To generate radiation chimeras, bone marrow cells were harvested from *Wnk1*<sup>fl/+</sup>RCE, *Wnk1*<sup>fl/-</sup>RCE, *Wnk1*<sup>fl/D368A</sup>RCE, MD4: *Wnk1*<sup>fl/+</sup>RCE, MD4: *Wnk1*<sup>fl/-</sup>RCE, *Oxsr1*<sup>fl/+</sup>RCE, *Oxsr1*<sup>fl/fl</sup>RCE, *Oxsr1*<sup>fl/fl</sup>*Stk39*<sup>T243A/T243A</sup>RCE,  $\mu$ MT or OT-II mice, or fetal livers were harvested from *Slc12a2*<sup>+/+</sup> or *Slc12a2*<sup>-/-</sup> E14.5 embryos.

RAG1-deficient animals (5–8 wk of age) were irradiated with 5Gy using a <sup>137</sup>Cs-source, and then reconstituted intravenously with at least  $1 \times 10^6$  bone marrow cells/recipient. The sex of the donor and recipient mice was always matched. All chimeric animals received Baytril (0.02%, Bayer Healthcare) in their drinking water for at least 4 wk after transplantation.

### Inducible gene knockout

Either 8–20 wk after reconstitution for chimeric mice or 8–20 wk after birth for non-chimeric mice, mice were injected intraperitoneally with 2 mg/d of tamoxifen (20 mg/ml in corn oil; Sigma-Aldrich) for 3 successive days and analyzed either 7 d after start of tamoxifen treatment for mice containing a *Wnk1*<sup>fl</sup> allele or treated for 5 successive days and analyzed 21 d after start of tamoxifen treatment for mice containing either an *Oxsr1*<sup>fl</sup> or a *Syk*<sup>fl</sup> allele.

### Analysis of RNAseq data

Gene expression levels in transcripts per million were calculated from previously acquired RNAseq data for B cell subsets (Gene Expression Omnibus accession no. GSE72019; Brazil et al., 2016) through the RSEM v1.2.31 software (Li and Dewey, 2011), employing STAR v2.5.1b (Dobin et al., 2013) to align reads against the mouse GRCm38 genome assembly with Ensembl release 86 transcript annotations.

### Flow cytometry

Flow cytometry was carried out using standard techniques with pre-titrated antibodies. Antibodies for flow cytometry and cell isolation against the following proteins (all mouse unless otherwise indicated) were obtained from BioLegend, eBioscience, Invitrogen, Jackson ImmunoResearch or BD Biosciences (clone names and dilutions indicated in parentheses): B220 (RA3-6B2, 1:200), mouse CD2 (RM2-5, 1:400), human CD2 (RPA-2.10, 1:200), CD4 (RM4-5 or GKL-5, 1:200), CD8 $\alpha$  (53-6.7, 1:200), CD11a (M17/4, 1:200), CD11b (M1/70, 1:200), CD11c (N418, 1:200), CD19 (1D3 or 6D5, 1:200), CD23 (B3B4, 1:400), CD25 (PC61.5, 1:400), CD40 (1C10, 1:200), CD43 (eBioR2/60, 1:200), CD44 (IM7, 1:200), CD45.1 (A20, 1:200), CD45.2 (104, 1:200), CD69 (H1.2F3, 1:200), CD71 (R17217, 1:200), CD80 (16-10A1, 1:200), CD86 (GL1, 1:200), CD93 (AA4.1, 1:100), CD95 (Jo2, 1:200), CD138 (281-2, 1:200–300), CXCR5 (L138D7, 1:200), E $\alpha$ <sub>52-68</sub> peptide bound to I-A<sup>b</sup> (eBioY-Ae, 1:200), ICOSL (HK5.3, 1:200), IgD (11-26C, 1:200–400), IgG1 (X56, 1:200–300), IgG2b (polyclonal, 1:500), IgM (RMM-1, 1:200), IgM (goat polyclonal F(ab')<sub>2</sub>, 1:300), Ki-67 (SolA15, 1:100), Ly-6G (RB6-8C5, 1:200), Ly77 (GL7, 1:100), MHC class II I-A/I-E (M5/114.15.12, 1:200), and TCR $\beta$  (H57-597, 1:200). Further reagents are as follows: LIVE/DEAD NearIR (1:500), CellTrace CFSE, CellTrace Violet (CTV), CellTracker Green 5-chloromethylfluorescein diacetate (CMFDA), Cell Proliferation Dye (CPD) eFluor 450, CellTracker Orange 5-(and-6)-(((4-chloromethyl)benzoyl)amino)tetramethylrhodamine (CMTMR), CellTracker Blue 7-amino-4-chloromethylcoumarin (CMAC), all from Thermo Fisher Scientific, Inc., and Zombie Aqua (1:500) from BioLegend. For the analysis of Ki-67 expression and of antigen-specific plasma cells, intracellular staining was carried out by incubating single-cell suspensions with antibodies against surface markers, fixing for 20 min with



Fix/Perm buffer (BD Biosciences), washing twice with Perm/Wash buffer (BD Biosciences) and incubating with anti-Ki-67 or NP conjugated to phycoerythrin (NP-PE; Biosearch Technologies) in Perm/Wash buffer for 30 min. After two further washes with Perm/Wash, buffer cells were analyzed by flow cytometry.

### Enrichment of splenic B cells

Single-cell suspensions of splenocytes were incubated with biotin-conjugated antibodies against CD11b, CD11c, CD43, and Ly-6G, washed, and incubated with streptavidin-conjugated magnetic beads (Dynabeads, Life Technologies); cells bound to the beads were removed according to the manufacturer's instructions.

### Immunoblotting

Splenic B cells were rested for 3 h (anti-IgM and CXCL13 stimulations), or not rested (CD40L and LPS stimulations) in IMDM, 5% FCS at 37°C. When indicated, cells were pre-incubated for 1 h at 37°C with either WNK463 (5  $\mu$ M, HY-100626; Insight Biotechnology), PI-103 (1  $\mu$ M; Biovision), MK2206 (2  $\mu$ M; Cambridge Bioscience), BI605906 (10  $\mu$ M; Tocris), PD0325901 (10 nM; Selleckchem) all diluted 1,000-fold from stock solutions in DMSO, or with vehicle only (DMSO, 1:1,000). Where indicated, the cells were stimulated with either 1  $\mu$ g/ml recombinant murine CXCL13 (CXCL13; R&D Systems; Biotechne), 10  $\mu$ g/ml AffiniPure F(ab')<sub>2</sub> fragment goat anti-mouse IgM (anti-IgM, Jackson ImmunoResearch Laboratories, Inc.), 10  $\mu$ g/ml biotin-SP AffiniPure F(ab')<sub>2</sub> fragment goat anti-mouse IgM (biotinylated anti-IgM, Jackson ImmunoResearch Laboratories, Inc.), 1  $\mu$ g/ml recombinant murine CD40L (CD40L, R&D Systems; Biotechne), or 10  $\mu$ g/ml LPS from *Salmonella minnesota* R595 (LPS; Enzo Life Sciences, Inc.). Subsequent immunoblotting analysis was performed as described previously (Degasperis et al., 2014; Reynolds et al., 2002). The following antibodies and reagents were used for the detection of proteins by immunoblotting: anti-pS325-OXSRI/pS383-STK39 (MRC-PPU), anti-OXSRI (MRC-PPU) anti- $\alpha$ -TUBULIN (TAT-1, Cell Services STP, The Francis Crick Institute), anti-pS473-AKT (193H12; Cell Signaling Technology), anti-pT246-PRAS40 (C77D7; Cell Signaling Technology), anti-ERK2 (D-2; Santa Cruz Biotechnology), anti-SYK (5F5; BioLegend), anti-pS932-p105 (18E6; Cell Signaling Technology), anti-pT202/pT204-ERK1/2 (197G2; Cell Signaling Technology), and anti-MYC (Y69; Abcam). Binding of primary antibodies was detected using IRDye 800CW-conjugated anti-mouse IgG (LI-COR Biosciences), Alexa Fluor 680-conjugated anti-rabbit IgG (Thermo Fisher Scientific), or Alexa Fluor 680-conjugated anti-sheep IgG (Thermo Fisher Scientific). Biotin was detected using streptavidin-Alexa Fluor 680 (Thermo Fisher Scientific). Fluorescence from the secondary reagents was detected using an Odyssey (LI-COR Biosciences). For quantitation, signal from p-OXSRI, p-AKT, p-PRAS40, SYK, OXSRI, MYC, p-p105, and p-ERK1/2 was normalized to the relevant loading control (ERK2 or  $\alpha$ -TUBULIN). These normalized signals were expressed as a fraction of the sum of all normalized signals across a single blot. This second step of normalization results in values that are less affected by noisy signals in single lanes and thus are more robust.

### Q-PCR for *Wnk1* mRNA

$5 \times 10^5$  splenic B cells from control or WNK1-deficient animals were isolated as described above, total RNA was extracted with an RNAEasy Plus Micro Kit (Qiagen), and cDNA was synthesized with a SuperScriptVILO cDNA Synthesis kit (Thermo Fisher Scientific). Samples were analyzed on a QuantStudio3 Real-time PCR system (Thermo Fisher Scientific) using a TaqMan gene expression assay spanning exon1 and exon 2 of *Wnk1* (Mm01184006\_m1; Thermo Fisher Scientific). Data were normalized to *Hprt* (Mm03024075\_m1; Thermo Fisher Scientific) and analyzed using the comparative threshold cycle method.

### Adhesion assays

Binding of ICAM1 complexes to primary mouse splenocytes was analyzed as described (Konstandin et al., 2006). Either soluble ICAM-1-Fc-F(ab')<sub>2</sub> or VCAM-1-Fc-F(ab')<sub>2</sub> complexes were generated by diluting APC-labeled goat anti-human IgG F(ab')<sub>2</sub> fragments (109-135-098; Jackson ImmunoResearch) 1:6.25 with either ICAM-1-Fc (200  $\mu$ g/ml final; Biotechne) VCAM-1-Fc (200  $\mu$ g/ml final; Biotechne) in HBSS and incubated for 30 min in HBSS at 4°C. Splenocytes were rested for 3 h in IMDM, 5% FCS at 37°C, centrifuged, and resuspended in HBSS, 0.5% BSA. Each adhesion reaction (10  $\mu$ l) contained  $20 \times 10^6$  cells/ml, 25  $\mu$ g/ml ICAM-1 or VCAM-1 complex and the appropriate stimulus and was incubated at 37°C for the indicated times. Cells were fixed in paraformaldehyde (PFA) for 20 min, and binding of ICAM-1 or VCAM-1 complexes to splenic B cells was analyzed by flow cytometry.

### Migration assays

B cell migration was assessed in 96-well Transwell plates, containing polycarbonate filters (5  $\mu$ m pore size, Corning). Transwell filters were coated overnight with mouse ICAM1-Fc (500 ng/ml in PBS) and blocked with PBS, 2% BSA for over 1 h. The B cells were rested in AB IMDM, 5% FCS for 1 h at 37°C and when indicated cells were pre-incubated with either WNK463 (5  $\mu$ M), azosemide (20  $\mu$ M; MedChemExpress), or bumetanide (20  $\mu$ M; Santa Cruz Biotechnology) all diluted 1,000-fold from stock solutions in DMSO, or with vehicle only (DMSO, 1:1,000) during the rest period. The receiver plate was filled with RPMI, 0.5% BSA, containing CXCL13 (1  $\mu$ g/ml) or no chemokine, and  $8 \times 10^4$  splenic B cells in RPMI, 0.5% BSA were added to each well of the filter plate. After 3 h at 37°C, the filter plate was removed, EDTA was added to each well (40 mM final concentration), and the cells were transferred to 96-well V-bottom plates, spun, resuspended in PBS, 0.5% BSA, and cell numbers determined by flow cytometry. Percentage migration was calculated by dividing the number of cells that migrated through the filter by the total number of cells that had been added to each well.

### Chemokinesis

8-well Chamber Slides (Lab-Tek) were coated overnight with ICAM1-Fc (3  $\mu$ g/ml) and blocked for 2 h with PBS, 2% BSA. Mouse splenic B cells were labeled with either 1  $\mu$ M CTV or 1  $\mu$ M CMFDA in PBS at 37°C, and rested in phenol red-free IMDM, 0.5% BSA, 20 mM HEPES at 37°C for at least 3 h. Cells with



different labels were mixed at a 1:1 ratio.  $1.5 \times 10^5$  cells were added to each chamber and allowed to settle for 20 min in the heat chamber of an Eclipse Ti2 microscope (Nikon, Inc.) set to 37°C. CXCL13 (1 µg/ml) was added to the chamber, and three videos (60 frames at three frames/min) were generated for each chamber using Eclipse Ti2 and µManager (<https://micro-manager.org>). Videos were analyzed using the TrackMate (Tinevez et al., 2017) plugin in FIJI (Schindelin et al., 2012). Analysis was limited to cells that appeared in all frames and had a displacement  $\geq 5$  µm.

### In vivo homing

C57BL/6J mice were injected intravenously with a 1:1 mixture of splenocytes from *Wnk1<sup>fl/+</sup>*RCE and *Wnk1<sup>fl/-</sup>*RCE bone marrow radiation chimeras, labeled with 1 µM CMFDA or 1 µM CTV. Dyes were swapped between genotypes in repeat experiments. After 1 h, blood, spleen, and LNs were harvested, stained with antibodies against B220 and analyzed by flow cytometry to determine the ratio between CMFDA- and CTV-labeled B220<sup>+</sup> B cells.

### Three-dimensional immunofluorescence

B cells were labeled with CMTMR (5 µM) and transferred i.v. into C57BL/6 recipient mice. After 20 min, further adhesion of B cells to HE was blocked by i.v. injection of anti-CD62L (Mel-14, 100 µg/mouse; Nanotools) in combination with Alexa Fluor 633-conjugated anti-PNAd (MECA-79, 15 µg/mouse; Nanotools) to visualize HEV. After a further 20 min (40 min after B cell transfer), mice were sacrificed and perfused with 10-ml cold PBS and 10-ml cold 4% PFA. Popliteal, inguinal, axillary, and brachial LNs were harvested and cleaned from surrounding connective tissues. LNs were fixed overnight in 4% PFA at 4°C. The following day, LNs were embedded in 1.3% low gelling agarose (A-9414; Sigma-Aldrich), dehydrated in 100% methanol (Sigma-Aldrich) overnight, followed by clearing with a benzyl alcohol, benzyl benzoate solution (Sigma-Aldrich) as described (Boscacci et al., 2010). LNs were imaged by two-photon microscopy (2PM), taking 251–501 images from a 300–400 × 300–400 µm field of view with z-stacks at 2 µm spacing. Images were visualized with Imaris 9.1.2 software and cells attached to the luminal MECA-79 signal (“luminal”), attached to the abluminal MECA-79 signal (“perivascular”), and cells in the parenchyma of the popliteal, inguinal, axillary, and brachial LNs (“parenchymal”) were manually differentiated.

### Histology

C57BL/6J mice were injected intravenously with splenic B cells purified by negative depletion from either *Wnk1<sup>fl/+</sup>* RCE or *Wnk1<sup>fl/-</sup>* RCE radiation bone marrow chimeras and labeled with 1 µM CMFDA. After 1 h, spleens were harvested and embedded in optimum cutting temperature compound (BDH) and frozen. 8-µm sections were fixed with 4% PFA and blocked with 2% goat serum in PBS. To identify the white pulp, sections were stained with anti-MADCAM1 (1:50, MECA-367; eBioscience) and an Alexa Fluor 647-goat anti-rat IgG secondary antibody (1:400, A-21247; Life Technologies). Sections were also counter-stained with DAPI. Images were acquired using a Zeiss Axio Scan.Z1

slide scanner and analyzed by drawing regions of interest around the spleen and the white pulp areas and cells were counted using FIJI. Numbers of cells were first normalized to the red and white pulp area, respectively, and a ratio of cell density in the white pulp to red pulp was then calculated.

### Intravital microscopy of naive B cells

Splenic B cells were isolated using a mouse B cell isolation kit (STEMCELL Technologies) according to the manufacturer's protocol. B cells of each genotype were labeled either with 5 µM CMTMR or 20 µM CMAC for 20 min at 37°C, 5% CO<sub>2</sub> and mixed at a 1:1 ratio. The mixture was transferred intravenously into sex-matched C57BL/6J mice. 24 h after transfer, the popliteal LN of recipient mice was surgically exposed for 2PM as described (Moalli et al., 2014). Immediately prior to imaging, HEVs were labeled by intravenous injection of Alexa Fluor 633-conjugated anti-PNAd (MECA-79). 2PM imaging was performed using a Trimscope system equipped with an Olympus BX50WI fluorescence microscope and a 20× (NA 0.95; Olympus) or 25× objective (NA 1.10; Nikon), controlled by ImSpector software (LaVision Biotec). A MaiTai Ti:Sapphire laser (Spectra-Physics) was tuned to 780 nm for excitation of the fluorophores. To perform four-dimensional analysis of cell behavior, a 250 × 250 µm field of view with z-steps of 4 µm spacing was recorded every 20 s for 20–30 min. Vivofollow software allowed a continuous drift offset correction in real time using fine pattern matching during 2PM imaging (Vladymyrov et al., 2016). Cell migration analysis was performed using Imaris 9.1.2 software (Bitplane). Median speeds, meandering index, and turning angles (defined as the angle between the two velocity vectors before and after a measurement time point) were calculated from the (x,y,z) coordinates of the transferred B cell centroids. The arrest coefficient was calculated as the percentage of time per track that a cell moved <4 µm/min, using a custom script for Matlab (MathWorks; Moalli et al., 2014). The motility coefficient was calculated from the slope of a graph of displacement against time<sup>1/2</sup>.

### Activation, proliferation, and survival assays

Splenic B cells were purified by negative depletion as described above and resuspended in DMEM, 100 µM non-essential amino acids, 20 mM HEPES buffer (all from Thermo Fisher Scientific), 10% FCS, 100 U/ml penicillin (Sigma-Aldrich; Merck KGaA), 100 µg/ml streptomycin (Sigma-Aldrich; Merck KGaA), 2 mM L-glutamine (Sigma-Aldrich; Merck KGaA), and 100 µM 2-mercaptoethanol (Sigma-Aldrich; Merck KGaA; DMEM+). To measure proliferation, cells were labeled with CPD eF450 (10 µM; Thermo Fisher Scientific) in PBS for 10 min at 37°C before quenching with FCS-containing media. Cells were cultured in flat bottom 48-well plates (Corning, Inc.) at 10<sup>6</sup> cells/well and stimulated with either 10 µg/ml anti-IgM F(ab')<sub>2</sub>, 1 µg/ml CD40L, or 10 µg/ml LPS at 37°C for indicated times. After culture, the cells were subjected to centrifugation, and the supernatants removed and stored at –80°C for Luminex analysis. The number of live cells, surface protein levels, and proliferation were determined using flow cytometry. The number of cells remaining if there had been no divisions (N<sub>0</sub>) was calculated as

$N_0 = \sum_{i=1}^z \frac{n_i}{2^i}$  where  $n_i$  is the number of cells that had undergone  $i$  divisions, and  $z$  is the largest number of divisions observed in a given experiment.

### Luminex cytokine secretion

A 4-Plex ProcartaPlex kit (Thermo Fisher Scientific, Inc.) was used to measure IL-6, IL-10, TNF- $\alpha$ , and VEGF-A using Luminex-based technology according to the manufacturer's instructions on a Bio-Plex 200 (Bio-Rad Laboratories).

### Antigen presentation to OT-II T cells

0.2- $\mu$ m streptavidin-coated polystyrene microspheres (Bangs Laboratories) were incubated at 37°C for 1 h with biotinylated anti-IgM at a final concentration of 0.561  $\mu$ g/10<sup>9</sup> microspheres and biotinylated OVA (Nanocs, Inc.) at a final concentration of 0.219  $\mu$ g biotin-OVA/10<sup>9</sup> microspheres. Conjugated microspheres were counted using a ZE5 cell analyzer (Bio-Rad Laboratories, Inc.) and resuspended in DMEM+ at a bead concentration of 10–25  $\times$  10<sup>8</sup>/ml. Splenic B cells were isolated as described before and naive splenic CD4<sup>+</sup> T cells were isolated from OT-II mice were isolated using biotinylated antibodies against B220, CD8, CD11b, CD11c, CD19, CD25, and CD44. T cells were labeled with 1  $\mu$ M CFSE. Splenic B cells were incubated with conjugated microspheres at a ratio of 10–25 beads per B cell for 30 min at 37°C. Excess microspheres were washed away. Co-cultures of 2  $\times$  10<sup>5</sup> B cells and 10<sup>5</sup> OT-II CD4<sup>+</sup> T cells were cultured in 96-well U-bottom plates at 37°C for 24, 48, and 72 h. Flow cytometry was used to determine proliferation and upregulation of activation markers.

### B-T conjugation

Splenic B cells were isolated using negative depletion as described above, and naive splenic and LN CD4<sup>+</sup> T cells from OT-II bone marrow chimeras were isolated using negative depletion as described above. The B cells were incubated with the indicated concentrations of OVA<sub>323–339</sub> for 30 min at 37°C in FCS-free medium. The peptide-loaded B cells were mixed with the OT-II T cells at a 1:1 ratio and incubated at 37°C for 1 h, fixed with 4% PFA, and pipetted 12 times to remove non-specific conjugates. Flow cytometry was used to determine conjugation frequency defined as the frequency of B cells in a conjugate with a T cell.

### Antigen internalization

Goat F(ab')<sub>2</sub> anti-mouse Ig $\kappa$  (Southern Biotech) was biotinylated with 20-fold molar excess of NHS-LC-LC-biotin (Thermo Fisher Scientific, Inc.) and labeled with Cy3 monoreactive dye pack (GE Healthcare) in sodium carbonate buffer (biotinylated anti- $\kappa$ -Cy3). Excess dye was removed using Zeba 7K MWCO desalting columns (Thermo Fisher Scientific, Inc.). Splenocytes were incubated with biotinylated anti- $\kappa$ -Cy3 for 30 min on ice. Samples were incubated at 37°C for the times indicated before fixation with 2% PFA on ice for 20 min. Cells were stained with fluorescently labeled streptavidin to label the biotinylated anti- $\kappa$ -Cy3 on the surface. Flow cytometry was used to determine antigen internalization defined as the reduction in the amount of biotinylated anti- $\kappa$ -Cy3 remaining on the surface as a percentage of the amount on the surface of cells that had been left on ice.

### Ea peptide presentation

0.2- $\mu$ m Dragon Green streptavidin microspheres (10 mg/ml; Bangs Laboratories) were incubated at 37°C for 1 h with biotinylated anti-IgM at a final concentration of 1.52  $\mu$ g/10<sup>9</sup> microspheres, and with or without 3.03  $\mu$ g biotin-Ea peptide (Biotin-GSGFAKFASFEAQGALANIAVDKA-COOH; Crick Peptide Chemistry)/10<sup>9</sup> microspheres. Conjugated microspheres were resuspended in DMEM+ at a bead concentration of 40  $\mu$ g/ml. 1.3  $\times$  10<sup>6</sup> splenic B cells were incubated with 4  $\mu$ g conjugated microspheres for 30 min at 37°C. Excess microspheres were washed away, cells were incubated at 37°C for the indicated times and fixed with a final concentration of 2% formaldehyde (Thermo Fisher Scientific, Inc.). Quantities of Ea peptide on the I-A<sup>b</sup> MHC class II molecule and total I-A<sup>b</sup> were determined using flow cytometry.

### NP-CGG immunization

Mice were injected i.p. with 50  $\mu$ g of either CGG or NP-CGG (BioSearch Technologies) with 25% Alum (Thermo Fisher Scientific, Inc.) in PBS. The immune response was assessed by either withdrawing blood from superficial veins of the mouse tail and performing an ELISA or the mice were sacrificed at the indicated time points and spleens were used for flow cytometric analysis.

### TNP-Ficoll immunization

Splenic B cells of the indicated genotype were intravenously injected into  $\mu$ MT mice. 1 d later, the mice were injected i.p. with 50  $\mu$ g of TNP-Ficoll (Biosearch Technologies) in PBS. The antibody response was assessed by withdrawing blood from superficial veins of the mouse tail and performing an ELISA.

### ELISA

Levels of anti-NP or anti-TNP antibodies in the serum were measured by ELISA. Blood harvested from the superficial tail vein was left to clot for at least 30 min before centrifugation at 17,000  $g$  for 10 min at room temperature. The supernatant was transferred to a new tube and centrifuged again at 17,000  $g$  for 10 min. Finally, the supernatant was transferred to a new tube and stored at –80°C until the ELISA was performed. 96-well Maxisorp Immunoplates (Nalge Nunc International Corporation) were coated with either 5  $\mu$ g/ml NP<sub>20</sub>-BSA (Santa Cruz Biotechnology) or 5  $\mu$ g/ml TNP-BSA (Biosearch Technologies) overnight at 4°C and then washed five times with PBS, 0.01% Tween-20. Plates were blocked with 3% BSA in PBS for 2 h at room temperature and washed twice with PBS, 0.01% Tween-20. Sera serially diluted in PBS were added to the coated plates and incubated overnight at 4°C, followed by three washes with PBS, 0.01% Tween-20. NP-specific antibodies were detected using biotin-conjugated goat anti-mouse IgM (1.6  $\mu$ g/ml; CALTAG laboratories, Thermo Fisher Scientific, Inc.) or biotin-XX conjugated goat anti-mouse IgG1 (4  $\mu$ g/ml; Invitrogen; Thermo Fisher Scientific, Inc.). TNP-specific antibodies were detected using anti-mouse IgM HRP (1:300 dilution; Southern Biotech) or anti-mouse IgG3 HRP (1:300 dilution; Southern Biotech). These secondary antibodies were added to their respective plates and incubated at room temperature for 2 h. After three washes,

plates incubated with biotinylated detection antibodies were incubated with peroxidase-labeled streptavidin (1 µg/ml; Vector Laboratories) for 2 h at room temperature. Plates were washed five times before incubation with 1× TMB ELISA substrate solution (eBioscience; Thermo Fisher Scientific, Inc.) and the reaction was stopped with 1 M H<sub>2</sub>SO<sub>4</sub>. Signals were quantified using absorption at 450 nm on a SpectraMax 190 (Molecular Devices LLC). Data were analyzed using Microsoft Excel and GraphPad Prism 8 (GraphPad). Values in the linear portion of the response curve were used to calculate concentrations of NP- or TNP-specific antibodies in arbitrary units.

### In vivo activation and proliferation

(B6 × B6.SJL)F1 mice (CD45.1<sup>+</sup>CD45.2<sup>+</sup>) were injected i.p. with 50 µg of OVA (Invivogen) with 25% Alum (Thermo Fisher Scientific, Inc.) in PBS. 3 d later, splenic B cells (CD45.1<sup>+</sup>CD45.2<sup>+</sup>) were isolated by negative depletion, labeled with CMFDA (1 µM; Thermo Fisher Scientific, Inc.) and incubated with microspheres conjugated with either OVA, anti-IgM, or both as described above. These cells were then injected intravenously into the pre-immunized (B6 × B6.SJL)F1 mice at 500,000 cells per mouse. Mice were sacrificed 3 d later, and spleens were analyzed by flow cytometry. Transferred B cells were identified as CD45.1<sup>+</sup>CD45.2<sup>+</sup>.

### HEL-OVA conjugation

HEL and OVA (both from Sigma-Aldrich) were mixed in a 1:1 ratio (wt/wt) in PBS containing 0.023% glutaraldehyde and stirred at room temperature for 1 h. After removing precipitate by centrifugation, the solution was dialyzed against PBS (Dialysis tubes 8 kD molecular weight cutoff Mini Dialysis kit, Cytiva) overnight at 4°C as described (Allen et al., 2007). HEL-OVA conjugation was confirmed by SDS-PAGE and silver staining. Conjugated HEL-OVA solution was further purified from unconjugated proteins using a 50 kD Amicon filter tube (Merck).

### Intravital microscopy of B cell–T cell interactions

Splenic B cells were isolated from bone marrow chimeras (MojoSort Mouse Pan B Cell Isolation Kit; BioLegend). Control and WNK1-deficient B cells were labeled with CellTracker blue (CMAC, 20 µM) and CellTracker orange (CMTMR, 10 µM; both Invitrogen), respectively, for 20 min at 37°C. CD4<sup>+</sup> T cells were isolated from WT C57BL/6J mice and from GFP<sup>+</sup> OTII mice (EasySep Mouse CD4<sup>+</sup> T cell Isolation Kit; Stemcell). WT polyclonal CD4<sup>+</sup> T cells were labeled with CPD eFluor670 (10 µM; eBioscience) for 20 min at 37°C. Control and WNK1-deficient B cells (5 × 10<sup>6</sup> each) were transferred i.v. in a 1:1 ratio together with GFP<sup>+</sup> OT-II TCR transgenic CD4<sup>+</sup> T cells and polyclonal CD4<sup>+</sup> T cells (3 × 10<sup>6</sup> each) into recipient mice that had received 15 µg HEL-OVA, 0.2 µg LPS in Alum (total volume of 20 µl) s.c. in the foot hock 18 h earlier. At 24-h after cell transfer, intravital imaging of reactive popliteal LNs was performed on a TrimScope (LaVision Biotec) equipped with a MaiTai NIR Laser (Spectraphysics) tuned to 780 nm and a Nikon 25× objective with NA 1.0 (Ficht et al., 2019). For analysis of cell migration and interactions, z-stacks of 11 images from 150 to 250 µm<sup>2</sup> areas were recorded every 30 s for 30 min at the B cell follicle

border. Image sequences were analyzed by semi-automated tracking using Imaris (Bitplane) and by visual inspection for interaction time.

### Statistical analysis

All statistical comparisons were carried out using the nonparametric two-tailed Mann–Whitney test or a two-way ANOVA test as detailed in the figure legends (Prism 8, GraphPad).

### Online supplemental material

Fig. S1 shows expression of genes encoding WNK1 pathway proteins. Fig. S2 shows generation and characterization of radiation chimeric mice from which B cells deficient in WNK1 pathway proteins were isolated. Fig. S3 shows flow cytometric analysis of surface levels of activation markers on control or WNK1-deficient B cells activated by anti-IgM or CD40L. Fig. S4 shows analysis of anti-IgM and CD40L-induced MYC expression, LPS-induced p-OXSRI, and the effect of various inhibitors on CD40L-induced p-OXSRI. Fig. S5 shows flow cytometric gating strategies for the data shown in Fig. 6 A and D; and Fig. 7 A. Video 1 shows three-dimensional histology of a LN visualizing the localization of control and WNK1-deficient B cells that had been transferred into the mice 40 min earlier. Video 2 shows migration of control and WNK1-deficient B cells in a LN. Videos 3 and 4 show migration of control and WNK1-deficient MD4 B cells and OT-II T cells in a LN following immunization with HEL-OVA as described in Fig. 7 D. Video 3 shows the migration tracks. Video 4 shows interactions between B and T cells.

### Acknowledgments

We thank Edina Schweighoffer for technical advice and provision of experimental material. We thank Paul O'Sullivan and Steve Ley for advice on use of kinase inhibitors. We thank Pavel Tolar, George Kassiotis, Edina Schweighoffer, Daisy Luff, and Fábio Ribeiro Rodrigues for critical comments on the manuscript. We thank the Flow Cytometry, Experimental Histopathology, Crick Advanced Light Microscopy, Cell Services, Peptide Chemistry, Media Kitchen, and Biological Research Facilities of the Francis Crick Institute for scientific support, reagents, and animal husbandry. We thank Chou-Long Huang (University of Iowa, Iowa City, IA, USA), Dario Alessi (University of Dundee, Dundee, UK), and Sung-Sen Yang (Tri-Service General Hospital, Taipei, Taiwan) for mouse strains.

V.L.J. Tybulewicz was supported by the UK Medical Research Council (Programme U117527252) and by the Francis Crick Institute, which receives its core funding from Cancer Research UK (CC2080), the UK Medical Research Council (CC2080), and the Wellcome Trust (CC2080). For the purpose of Open Access, the authors have applied a CC-BY public copyright licence to any Author Accepted Manuscript version arising from this submission.

Author contributions: Conceptualization: D.A. Hayward and V.L.J. Tybulewicz. Formal analysis: D.A. Hayward, S. Wissmann, and R. Mitter. Funding acquisition: J.V. Stein and V.L.J. Tybulewicz. Investigation: D.A. Hayward, L. Vanes, S. Wissmann, S. Sivapatham, H. Hartweiger, J. Biggs O'May, and L.L. de Boer. Methodology:



D.A. Hayward, R. Köchl, and V.L.J. Tybulewicz. Project administration: V.L.J. Tybulewicz. Resources: J. Biggs O'May, L.L. De Boer, and R. Köchl. Supervision: R. Köchl, J.V. Stein, and V.L.J. Tybulewicz. Visualization: D.A. Hayward, S. Wissmann, J.V. Stein, and V.L.J. Tybulewicz. Writing—original draft: D.A. Hayward, and V.L.J. Tybulewicz. Writing—review and editing: D.A. Hayward, J.V. Stein, and V.L.J. Tybulewicz.

Disclosures: The authors declare no competing interests exist.

Submitted: 27 August 2021

Revised: 20 November 2022

Accepted: 23 December 2022

## References

- Akkaya, M., K. Kwak, and S.K. Pierce. 2020. B cell memory: Building two walls of protection against pathogens. *Nat. Rev. Immunol.* 20:229–238. <https://doi.org/10.1038/s41577-019-0244-2>
- Alessi, D.R., J. Zhang, A. Khanna, T. Hochdörfer, Y. Shang, and K.T. Kahle. 2014. The WNK-SPAK/OSR1 pathway: Master regulator of cation-chloride cotransporters. *Sci. Signal.* 7:re3. <https://doi.org/10.1126/scisignal.2005365>
- Allen, C.D., T. Okada, H.L. Tang, and J.G. Cyster. 2007. Imaging of germinal center selection events during affinity maturation. *Science*. 315:528–531. <https://doi.org/10.1126/science.1136736>
- Alon, R., and S.W. Feigelson. 2012. Chemokine-triggered leukocyte arrest: Force-regulated bi-directional integrin activation in quantal adhesive contacts. *Curr. Opin. Cell Biol.* 24:670–676. <https://doi.org/10.1016/j.ceb.2012.06.001>
- Barnden, M.J., J. Allison, W.R. Heath, and F.R. Carbone. 1998. Defective TCR expression in transgenic mice constructed using cDNA-based  $\alpha$ - and  $\beta$ -chain genes under the control of heterologous regulatory elements. *Immunol. Cell Biol.* 76:34–40. <https://doi.org/10.1046/j.1440-1711.1998.00709.x>
- Boscacci, R.T., F. Pfeiffer, K. Gollmer, A.I.C. Sevilla, A.M. Martin, S.F. Soriano, D. Natale, S. Henrickson, U.H. von Andrian, Y. Fukui, et al. 2010. Comprehensive analysis of lymph node stroma-expressed Ig superfamily members reveals redundant and nonredundant roles for ICAM-1, ICAM-2, and VCAM-1 in lymphocyte homing. *Blood*. 116:915–925. <https://doi.org/10.1182/blood-2009-11-254334>
- Brazão, T.F., J.S. Johnson, J. Müller, A. Heger, C.P. Ponting, and V.L.J. Tybulewicz. 2016. Long noncoding RNAs in B-cell development and activation. *Blood*. 128:e10–e19. <https://doi.org/10.1182/blood-2015-11-680843>
- Bronte, V., and M.J. Pittet. 2013. The spleen in local and systemic regulation of immunity. *Immunity*. 39:806–818. <https://doi.org/10.1016/j.immuni.2013.10.010>
- Cannons, J.L., H. Qi, K.T. Lu, M. Dutta, J. Gomez-Rodriguez, J. Cheng, E.K. Wakeland, R.N. Germain, and P.L. Schwartzberg. 2010. Optimal germinal center responses require a multistage T cell:B cell adhesion process involving integrins, SLAM-associated protein, and CD84. *Immunity*. 32:253–265. <https://doi.org/10.1016/j.immuni.2010.01.010>
- Crotty, S. 2015. A brief history of T cell help to B cells. *Nat. Rev. Immunol.* 15: 185–189. <https://doi.org/10.1038/nri3803>
- Cyster, J.G., and C.D.C. Allen. 2019. B cell responses: Cell interaction dynamics and decisions. *Cell*. 177:524–540. <https://doi.org/10.1016/j.cell.2019.03.016>
- de Luca, C., T.J. Kowalski, Y. Zhang, J.K. Elmquist, C. Lee, M.W. Kilimann, T. Ludwig, S.M. Liu, and S.C. Chua Jr. 2005. Complete rescue of obesity, diabetes, and infertility in db/db mice by neuron-specific LEPR-B transgenes. *J. Clin. Invest.* 115:3484–3493. <https://doi.org/10.1172/JCI24059>
- Degasperis, A., M.R. Birtwistle, N. Volinsky, J. Rauch, W. Kolch, and B.N. Kholodenko. 2014. Evaluating strategies to normalise biological replicates of Western blot data. *PLoS One*. 9:e87293. <https://doi.org/10.1371/journal.pone.0087293>
- Dobin, A., C.A. Davis, F. Schlesinger, J. Drenkow, C. Zaleski, S. Jha, P. Batut, M. Chaisson, and T.R. Gingeras. 2013. STAR: Ultrafast universal RNA-seq aligner. *Bioinformatics*. 29:15–21. <https://doi.org/10.1093/bioinformatics/bts635>

- Ficht, X., N. Ruef, B. Stolp, G.P.B. Samson, F. Moalli, N. Page, D. Merkler, B.J. Nichols, A. Diz-Munoz, D.F. Legler, et al. 2019. In Vivo Function of the Lipid Raft Protein Flotillin-1 during CD8(+) T Cell-Mediated Host Surveillance. *J. Immunol.* 203:2377–2387. <https://doi.org/10.4049/jimmunol.1900075>
- Flagella, M., L.L. Clarke, M.L. Miller, L.C. Erway, R.A. Giannella, A. Andringa, L.R. Gawenis, J. Kramer, J.J. Duffy, T. Doetschman, et al. 1999. Mice lacking the basolateral Na-K-2Cl cotransporter have impaired epithelial chloride secretion and are profoundly deaf. *J. Biol. Chem.* 274:26946–26955. <https://doi.org/10.1074/jbc.274.38.26946>
- Gantke, T., S. Sriskantharajah, M. Sadowski, and S.C. Ley. 2012. I $\kappa$ B kinase regulation of the TPL-2/ERK MAPK pathway. *Immunol. Rev.* 246: 168–182. <https://doi.org/10.1111/j.1600-065X.2012.01104.x>
- Garside, P., E. Ingulli, R.R. Merica, J.G. Johnson, R.J. Noelle, and M.K. Jenkins. 1998. Visualization of specific B and T lymphocyte interactions in the lymph node. *Science*. 281:96–99. <https://doi.org/10.1126/science.281.5373.96>
- Girard, J.P., C. Moussion, and R. Förster. 2012. HEVs, lymphatics and homeostatic immune cell trafficking in lymph nodes. *Nat. Rev. Immunol.* 12:762–773. <https://doi.org/10.1038/nri3298>
- Goodnow, C.C., J. Crosbie, S. Adelstein, T.B. Lavoie, S.J. Smith-Gill, R.A. Brink, H. Pritchard-Briscoe, J.S. Wotherspoon, R.H. Loblay, K. Raphael, et al. 1988. Altered immunoglobulin expression and functional silencing of self-reactive B lymphocytes in transgenic mice. *Nature*. 334:676–682. <https://doi.org/10.1038/334676a0>
- Henriques, A.F.A., P. Matos, A.S. Carvalho, M. Azkargorta, F. Elortza, R. Matthiesen, and P. Jordan. 2020. WNK1 phosphorylation sites in TBC1D1 and TBC1D4 modulate cell surface expression of GLUT1. *Arch. Biochem. Biophys.* 679:108223. <https://doi.org/10.1016/j.abb.2019.108223>
- Hobeika, E., E. Levit-Zerdoun, V. Anastasopoulou, R. Pohlmeier, S. Altmeier, A. Alsadeq, M.W. Dobenecker, R. Pelanda, and M. Reth. 2015. CD19 and BAFF-R can signal to promote B-cell survival in the absence of Syk. *EMBO J.* 34:925–939. <https://doi.org/10.15252/embj.201489732>
- Jiang, Z.Y., Q.L. Zhou, J. Holik, S. Patel, J. Leszyk, K. Coleman, M. Chouinard, and M.P. Czech. 2005. Identification of WNK1 as a substrate of Akt/protein kinase B and a negative regulator of insulin-stimulated mitogenesis in 3T3-L1 cells. *J. Biol. Chem.* 280:21622–21628. <https://doi.org/10.1074/jbc.M414464200>
- Kim, J.H., H. Kim, K.H. Hwang, J.S. Chang, K.S. Park, S.K. Cha, and I.D. Kong. 2018. WNK1 kinase is essential for insulin-stimulated GLUT4 trafficking in skeletal muscle. *FEBS Open Bio*. 8:1866–1874. <https://doi.org/10.1002/2211-5463.12528>
- Kitamura, D., J. Roes, R. Kühn, and K. Rajewsky. 1991. A B cell-deficient mouse by targeted disruption of the membrane exon of the immunoglobulin mu chain gene. *Nature*. 350:423–426. <https://doi.org/10.1038/350423a0>
- Köchl, R., F. Thelen, L. Vanes, T.F. Brazão, K. Fountain, J. Xie, C.-L. Huang, R. Lyck, J.V. Stein, and V.L. Tybulewicz. 2016. WNK1 kinase balances T cell adhesion versus migration in vivo. *Nat. Immunol.* 17:1075–1083. <https://doi.org/10.1038/ni.3495>
- Köchl, R., L. Vanes, M. Llorian Sopena, P. Chakravarty, H. Hartweg, K. Fountain, A. White, J. Cowan, G. Anderson, and V.L. Tybulewicz. 2020. Critical role of WNK1 in MYC-dependent early mouse thymocyte development. *Elife*. 9:e56934. <https://doi.org/10.7554/eLife.56934>
- Konstantin, M.H., U. Sester, M. Klemke, T. Weschenfelder, G.H. Wabnitz, and Y. Samstag. 2006. A novel flow-cytometry-based assay for quantification of affinity and avidity changes of integrins. *J. Immunol. Methods*. 310:67–77. <https://doi.org/10.1016/j.jim.2005.12.005>
- Kwon, K., C. Hutter, Q. Sun, I. Bilic, C. Cobaleda, S. Malin, and M. Busslinger. 2008. Instructive role of the transcription factor E2A in early B lymphopoiesis and germinal center B cell development. *Immunity*. 28: 751–762. <https://doi.org/10.1016/j.immuni.2008.04.014>
- Lam, K.P., R. Kühn, and K. Rajewsky. 1997. In vivo ablation of surface immunoglobulin on mature B cells by inducible gene targeting results in rapid cell death. *Cell*. 90:1073–1083. [https://doi.org/10.1016/S0092-8674\(00\)80373-6](https://doi.org/10.1016/S0092-8674(00)80373-6)
- Lee, B.H., X. Min, C.J. Heise, B.E. Xu, S. Chen, H. Shu, K. Luby-Phelps, E.J. Goldsmith, and M.H. Cobb. 2004. WNK1 phosphorylates synaptotagmin 2 and modulates its membrane binding. *Mol. Cell*. 15:741–751. <https://doi.org/10.1016/j.molcel.2004.07.018>
- Li, B., and C.N. Dewey. 2011. RSEM: Accurate transcript quantification from RNA-seq data with or without a reference genome. *BMC Bioinf.* 12:323. <https://doi.org/10.1186/1471-2105-12-323>
- Lin, S.H., I.S. Yu, S.T. Jiang, S.W. Lin, P. Chu, A. Chen, H.K. Sytwu, E. Sahara, S. Uchida, S. Sasaki, and S.S. Yang. 2011. Impaired phosphorylation of Na(+)-



- K(+)-2Cl(-) cotransporter by oxidative stress-responsive kinase-1 deficiency manifests hypotension and Bartter-like syndrome. *Proc. Natl. Acad. Sci. USA*. 108:17538–17543. <https://doi.org/10.1073/pnas.1107452108>
- MacLennan, I.C., A. Gulbranson-Judge, K.M. Toellner, M. Casamayor-Palleja, E. Chan, D.M. Sze, S.A. Luther, and H.A. Orbea. 1997. The changing preference of T and B cells for partners as T-dependent antibody responses develop. *Immunol. Rev.* 156:53–66. <https://doi.org/10.1111/j.1600-065X.1997.tb00958.x>
- McCormick, J.A., and D.H. Ellison. 2011. The WNKs: Atypical protein kinases with pleiotropic actions. *Physiol. Rev.* 91:177–219. <https://doi.org/10.1152/physrev.00017.2010>
- Mendes, A.I., P. Matos, S. Moniz, and P. Jordan. 2010. Protein kinase WNK1 promotes cell surface expression of glucose transporter GLUT1 by regulating a Tre-2/USP6-BUB2-Cdc16 domain family member 4 (TBC1D4)-Rab8A complex. *J. Biol. Chem.* 285:39117–39126. <https://doi.org/10.1074/jbc.M110.159418>
- Meslin, L., J. Ersching, and G.D. Victora. 2016. Germinal center B cell dynamics. *Immunity*. 45:471–482. <https://doi.org/10.1016/j.immuni.2016.09.001>
- Moalli, F., J. Cupovic, F. Thelen, P. Halbherr, Y. Fukui, S. Narumiya, B. Ludewig, and J.V. Stein. 2014. Thromboxane A2 acts as tonic immunoregulator by preferential disruption of low-avidity CD4<sup>+</sup> T cell-dendritic cell interactions. *J. Exp. Med.* 211:2507–2517. <https://doi.org/10.1084/jem.20140137>
- Mombaerts, P., J. Iacomini, R.S. Johnson, K. Herrup, S. Tonegawa, and V.E. Papaioannou. 1992. RAG-1-deficient mice have no mature B and T lymphocytes. *Cell*. 68:869–877. [https://doi.org/10.1016/0092-8674\(92\)90030-G](https://doi.org/10.1016/0092-8674(92)90030-G)
- Oh, E., C.J. Heise, J.M. English, M.H. Cobb, and D.C. Thurmond. 2007. WNK1 is a novel regulator of Munc18c-syntaxin 4 complex formation in soluble NSF attachment protein receptor (SNARE)-mediated vesicle exocytosis. *J. Biol. Chem.* 282:32613–32622. <https://doi.org/10.1074/jbc.M706591200>
- Okada, T., M.J. Miller, I. Parker, M.F. Krummel, M. Neighbors, S.B. Hartley, A. O'Garra, M.D. Cahalan, and J.G. Cyster. 2005. Antigen-engaged B cells undergo chemotaxis toward the T zone and form motile conjugates with helper T cells. *PLoS Biol.* 3:e150. <https://doi.org/10.1371/journal.pbio.0030150>
- Petersone, L., N.M. Edner, V. Ovcinnikovs, F. Heuts, E.M. Ross, E. Ntavli, C.J. Wang, and L.S.K. Walker. 2018. T cell/B cell collaboration and autoimmunity: An intimate relationship. *Front. Immunol.* 9:1941. <https://doi.org/10.3389/fimmu.2018.01941>
- Qi, H., J.L. Cannons, F. Klauschen, P.L. Schwartzberg, and R.N. Germain. 2008. SAP-controlled T-B cell interactions underlie germinal center formation. *Nature*. 455:764–769. <https://doi.org/10.1038/nature07345>
- Qi, H., W. Kastenmüller, and R.N. Germain. 2014. Spatiotemporal basis of innate and adaptive immunity in secondary lymphoid tissue. *Annu. Rev. Cell Dev. Biol.* 30:141–167. <https://doi.org/10.1146/annurev-cellbio.100913-013254>
- Rafiqi, F.H., A.M. Zuber, M. Glover, C. Richardson, S. Fleming, S. Jovanović, A. Jovanović, K.M. O'Shaughnessy, and D.R. Alessi. 2010. Role of the WNK-activated SPAK kinase in regulating blood pressure. *EMBO Mol. Med.* 2:63–75. <https://doi.org/10.1002/emmm.200900058>
- Reif, K., E.H. Ekland, L. Ohl, H. Nakano, M. Lipp, R. Förster, and J.G. Cyster. 2002. Balanced responsiveness to chemoattractants from adjacent zones determines B-cell position. *Nature*. 416:94–99. <https://doi.org/10.1038/416094a>
- Reynolds, L.F., L.A. Smyth, T. Norton, N. Freshney, J. Downward, D. Kioussis, and V.L.J. Tybulewicz. 2002. Vav1 transduces T cell receptor signals to the activation of phospholipase C-γ1 via phosphoinositide 3-kinase-dependent and -independent pathways. *J. Exp. Med.* 195:1103–1114. <https://doi.org/10.1084/jem.20011663>
- Roche, P.A., and K. Furuta. 2015. The ins and outs of MHC class II-mediated antigen processing and presentation. *Nat. Rev. Immunol.* 15:203–216. <https://doi.org/10.1038/nri3818>
- Schaefer, B.C., M.L. Schaefer, J.W. Kappler, P. Marrack, and R.M. Kedl. 2001. Observation of antigen-dependent CD8<sup>+</sup> T-cell/dendritic cell interactions in vivo. *Cell. Immunol.* 214:110–122. <https://doi.org/10.1006/cimm.2001.1895>
- Schindelin, J., I. Arganda-Carreras, E. Frise, V. Kaynig, M. Longair, T. Pietzsch, S. Preibisch, C. Rueden, S. Saalfeld, B. Schmid, et al. 2012. Fiji: An open-source platform for biological-image analysis. *Nat. Methods*. 9: 676–682. <https://doi.org/10.1038/nmeth.2019>
- Schulz, O., S.I. Hammerschmidt, G.L. Moschovakis, and R. Förster. 2016. Chemokines and chemokine receptors in lymphoid tissue dynamics. *Annu. Rev. Immunol.* 34:203–242. <https://doi.org/10.1146/annurev-immunol-041015-055649>
- Schweighoffer, E., and V.L. Tybulewicz. 2018. Signalling for B cell survival. *Curr. Opin. Cell Biol.* 51:8–14. <https://doi.org/10.1016/j.ccb.2017.10.002>
- Schweighoffer, E., L. Vanes, J. Nys, D. Cantrell, S. McCleary, N. Smithers, and V.L. Tybulewicz. 2013. The BAFF receptor transduces survival signals by co-opting the B cell receptor signaling pathway. *Immunity*. 38: 475–488. <https://doi.org/10.1016/j.immuni.2012.11.015>
- Schwickert, T.A., G.D. Victora, D.R. Fooksman, A.O. Kamphorst, M.R. Mugnier, A.D. Gitlin, M.L. Dustin, and M.C. Nussenzweig. 2011. A dynamic T cell-limited checkpoint regulates affinity-dependent B cell entry into the germinal center. *J. Exp. Med.* 208:1243–1252. <https://doi.org/10.1084/jem.20102477>
- Shekarabi, M., J. Zhang, A.R. Khanna, D.H. Ellison, E. Delpire, and K.T. Kahle. 2017. WNK kinase signaling in ion homeostasis and human disease. *Cell Metabol.* 25:285–299. <https://doi.org/10.1016/j.cmet.2017.01.007>
- Sun, X., L. Gao, R.K. Yu, and G. Zeng. 2006. Down-regulation of WNK1 protein kinase in neural progenitor cells suppresses cell proliferation and migration. *J. Neurochem.* 99:1114–1121. <https://doi.org/10.1111/j.1471-4159.2006.04159.x>
- Tangye, S.G., C.S. Ma, R. Brink, and E.K. Deenick. 2013. The good, the bad and the ugly—TFH cells in human health and disease. *Nat. Rev. Immunol.* 13: 412–426. <https://doi.org/10.1038/nri3447>
- Tew, J.G., J. Wu, D. Qin, S. Helm, G.F. Burton, and A.K. Szakal. 1997. Follicular dendritic cells and presentation of antigen and costimulatory signals to B cells. *Immunol. Rev.* 156:39–52. <https://doi.org/10.1111/j.1600-065X.1997.tb00957.x>
- Thastrup, J.O., F.H. Rafiqi, A.C. Vitari, E. Pozo-Guisado, M. Deak, Y. Mehellou, and D.R. Alessi. 2012. SPAK/OSR1 regulate NKCC1 and WNK activity: Analysis of WNK isoform interactions and activation by T-loop trans-autophosphorylation. *Biochem. J.* 441:325–337. <https://doi.org/10.1042/BJ20111879>
- Tinevez, J.-Y., N. Perry, J. Schindelin, G.M. Hoopes, G.D. Reynolds, E. Laplantine, S.Y. Bednarek, S.L. Shorte, and K.W. Eliceiri. 2017. TrackMate: An open and extensible platform for single-particle tracking. *Methods*. 115:80–90. <https://doi.org/10.1016/j.ymeth.2016.09.016>
- Tu, S.W., A. Bugde, K. Luby-Phelps, and M.H. Cobb. 2011. WNK1 is required for mitosis and abscission. *Proc. Natl. Acad. Sci. USA*. 108:1385–1390. <https://doi.org/10.1073/pnas.1018567108>
- Victora, G.D., and M.C. Nussenzweig. 2012. Germinal centers. *Annu. Rev. Immunol.* 30:429–457. <https://doi.org/10.1146/annurev-immunol-020711-075032>
- Vitari, A.C., M. Deak, B.J. Collins, N. Morrice, A.R. Prescott, A. Phelan, S. Humphreys, and D.R. Alessi. 2004. WNK1, the kinase mutated in an inherited high-blood-pressure syndrome, is a novel PKB (protein kinase B)/Akt substrate. *Biochem. J.* 378:257–268. <https://doi.org/10.1042/bj20031692>
- Vitari, A.C., M. Deak, N.A. Morrice, and D.R. Alessi. 2005. The WNK1 and WNK4 protein kinases that are mutated in Gordon's hypertension syndrome phosphorylate and activate SPAK and OSR1 protein kinases. *Biochem. J.* 391:17–24. <https://doi.org/10.1042/BJ20051180>
- Vitari, A.C., J. Thastrup, F.H. Rafiqi, M. Deak, N.A. Morrice, H.K. Karlsson, and D.R. Alessi. 2006. Functional interactions of the SPAK/OSR1 kinases with their upstream activator WNK1 and downstream substrate NKCC1. *Biochem. J.* 397:223–231. <https://doi.org/10.1042/BJ20060220>
- Vladymyrov, M., J. Abe, F. Moalli, J.V. Stein, and A. Ariga. 2016. Real-time tissue offset correction system for intravital multiphoton microscopy. *J. Immunol. Methods*. 438:35–41. <https://doi.org/10.1016/j.jim.2016.08.004>
- Wang, X., L.B. Rodda, O. Bannard, and J.G. Cyster. 2014. Integrin-mediated interactions between B cells and follicular dendritic cells influence germinal center B cell fitness. *J. Immunol.* 192:4601–4609. <https://doi.org/10.1049/jimmunol.1400090>
- Wilson, F.H., S. Disse-Nicodème, K.A. Choate, K. Ishikawa, C. Nelson-Williams, I. Desitter, M. Gunel, D.V. Milford, G.W. Lipkin, J.M. Achard, et al. 2001. Human hypertension caused by mutations in WNK kinases. *Science*. 293:1107–1112. <https://doi.org/10.1126/science.1062844>
- Wu, N., and A. Veillette. 2016. SLAM family receptors in normal immunity and immune pathologies. *Curr. Opin. Immunol.* 38:45–51. <https://doi.org/10.1016/j.coi.2015.11.003>
- Xie, J., T. Wu, K. Xu, I.K. Huang, O. Cleaver, and C.L. Huang. 2009. Endothelial-specific expression of WNK1 kinase is essential for angiogenesis and heart development in mice. *Am. J. Pathol.* 175:1315–1327. <https://doi.org/10.2353/ajpath.2009.090094>
- Yamada, K., H.M. Park, D.F. Rigel, K. DiPetrillo, E.J. Whalen, A. Anisowicz, M. Beil, J. Berstler, C.E. Brocklehurst, D.A. Burdick, et al. 2016. Small-

- molecule WNK inhibition regulates cardiovascular and renal function. *Nat. Chem. Biol.* 12:896–898. <https://doi.org/10.1038/nchembio.2168>
- Yuseff, M.I., P. Pierobon, A. Reversat, and A.M. Lennon-Duménil. 2013. How B cells capture, process and present antigens: A crucial role for cell polarity. *Nat. Rev. Immunol.* 13:475–486. <https://doi.org/10.1038/nri3469>
- Zambrowicz, B.P., A. Abuin, R. Ramirez-Solis, L.J. Richter, J. Piggott, H. BeltrandelRio, E.C. Buxton, J. Edwards, R.A. Finch, C.J. Friddle, et al. 2003. Wnk1 kinase deficiency lowers blood pressure in mice: A gene-trap screen to identify potential targets for therapeutic intervention. *Proc. Natl. Acad. Sci. USA.* 100:14109–14114. <https://doi.org/10.1073/pnas.2336103100>
- Zaretsky, I., O. Atrakchi, R.D. Mazor, L. Stoler-Barak, A. Biram, S.W. Feigelson, A.D. Gitlin, B. Engelhardt, and Z. Shulman. 2017. ICAMs support B cell interactions with T follicular helper cells and promote clonal selection. *J. Exp. Med.* 214:3435–3448. <https://doi.org/10.1084/jem.20171129>
- Zhu, W., G. Begum, K. Pointer, P.A. Clark, S.S. Yang, S.H. Lin, K.T. Kahle, J.S. Kuo, and D. Sun. 2014. WNK1-OSR1 kinase-mediated phospho-activation of Na<sup>+</sup>-K<sup>+</sup>-2Cl<sup>-</sup> cotransporter facilitates glioma migration. *Mol. Cancer.* 13:31. <https://doi.org/10.1186/1476-4598-13-31>

## Supplemental material

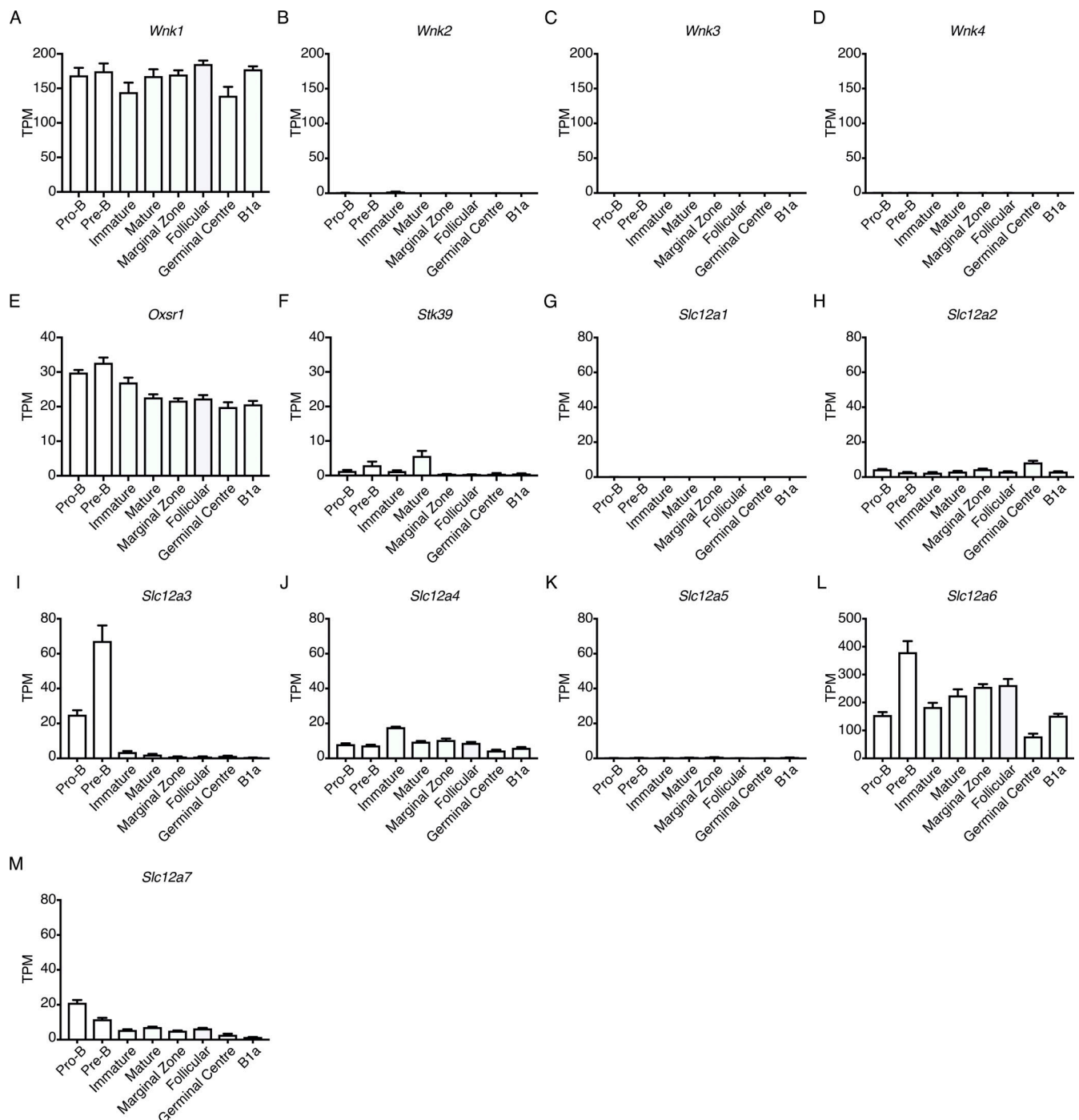
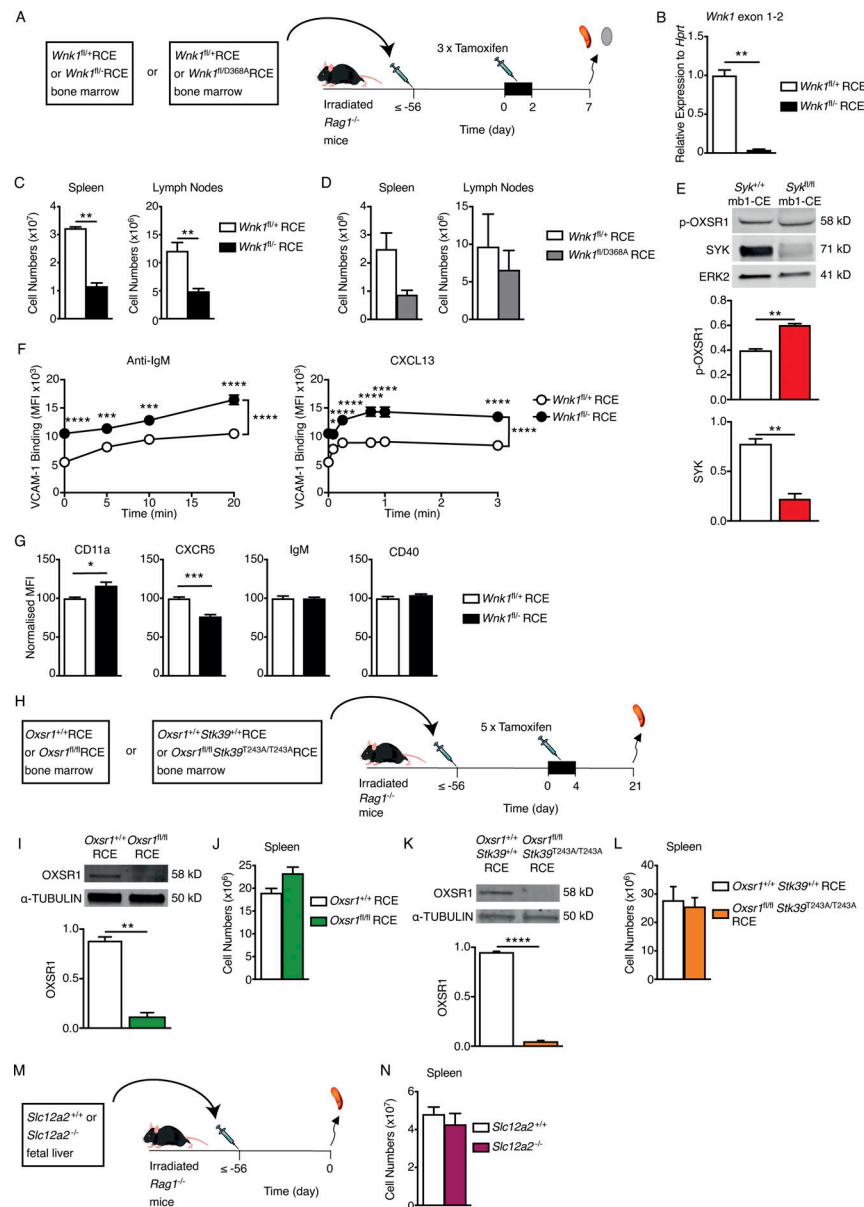
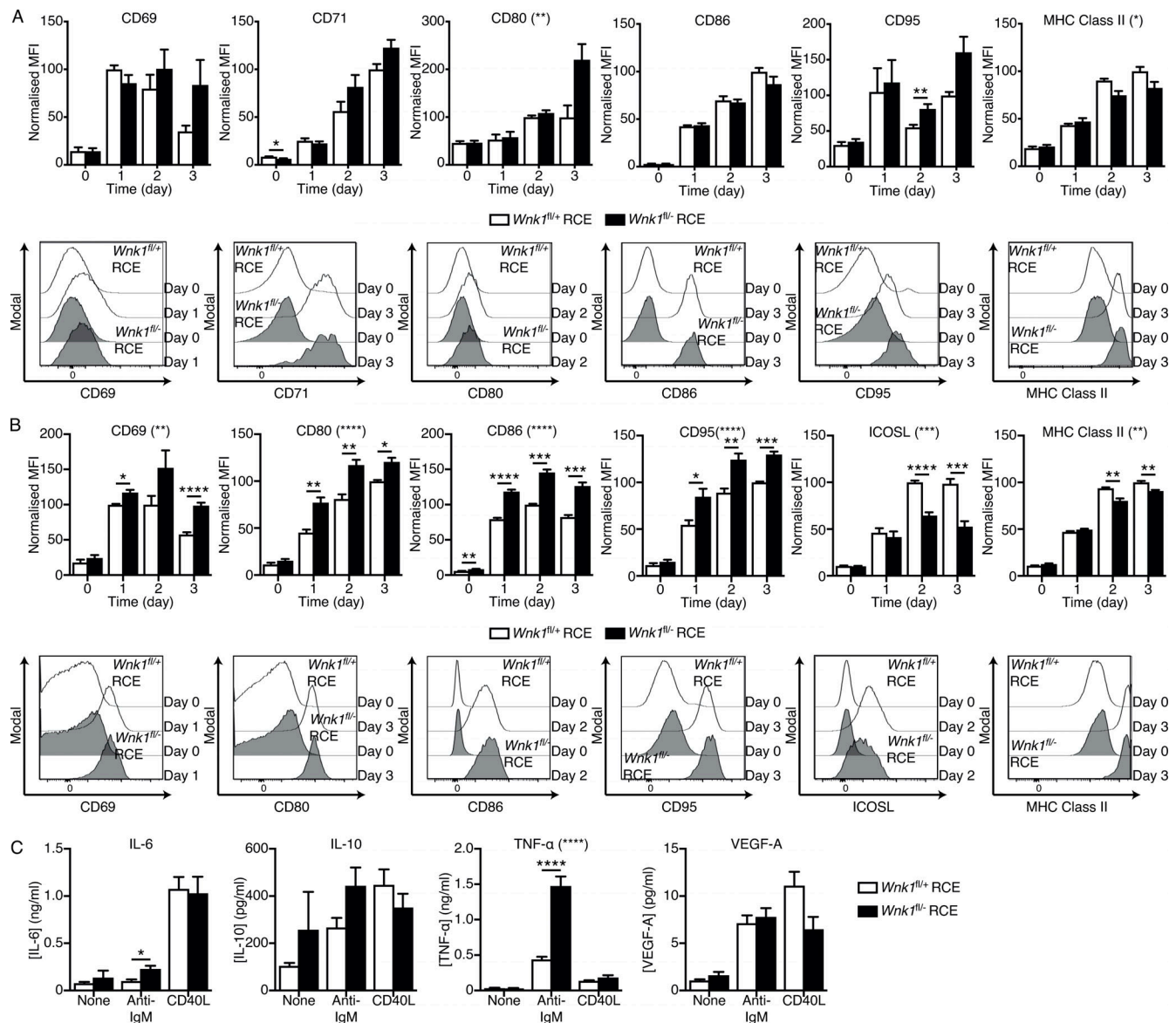


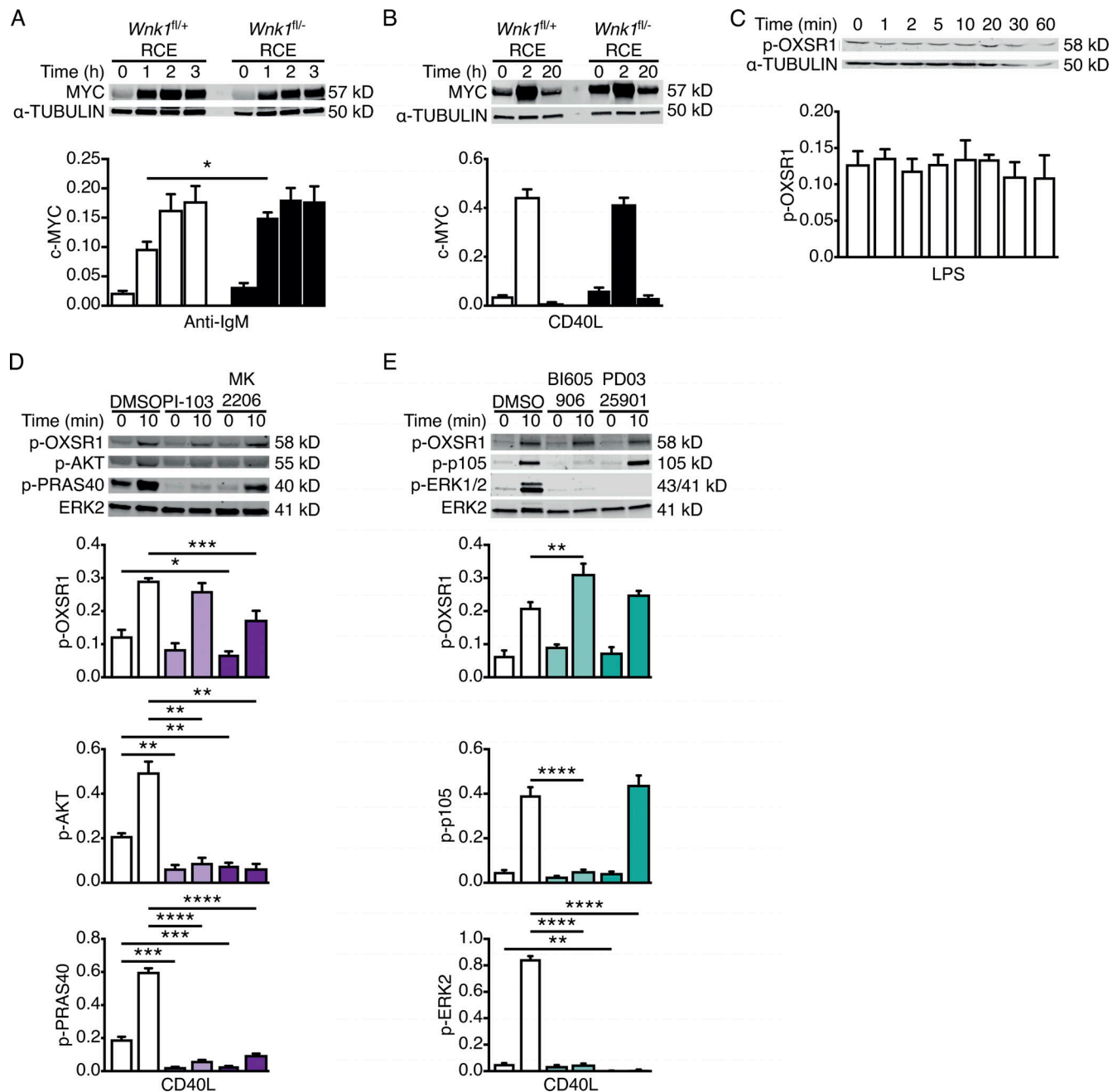
Figure S1. **Expression of WNK pathway genes in B cell subsets.** (A–M) Mean ± SEM expression levels of the indicated genes in pro-B, pre-B, immature B and mature B cells in bone marrow, marginal zone, follicular, and GCB cells in spleen, and B1a cells from the peritoneal cavity as determined by RNAseq (Brazão et al., 2016). Expression is measured as transcripts per million (TPM). Sample size: five.



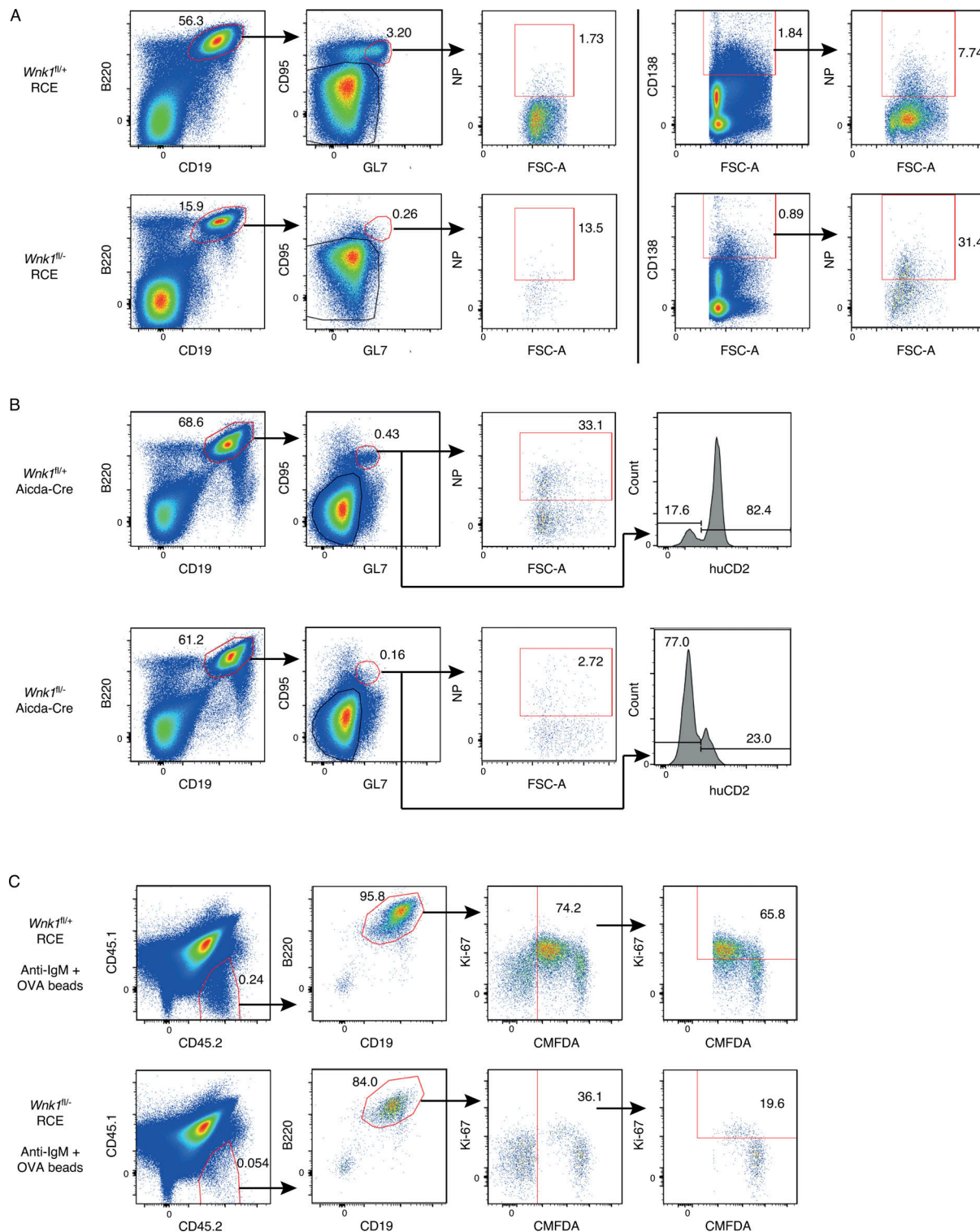
**Figure S2. Characterization of mice with mutations in WNK1 pathway genes.** (A) Irradiated RAG1-deficient mice were reconstituted with bone marrow from either *Wnk1<sup>fl/+</sup>*RCE or *Wnk1<sup>fl/fl</sup>*RCE mice, or from *Wnk1<sup>fl/+</sup>*RCE or *Wnk1<sup>fl/D368A</sup>*RCE mice. At least 56 d later, mice were treated with tamoxifen on 3 consecutive days and analyzed 7 d after the start of tamoxifen treatment. (B) Mean  $\pm$  SEM levels of *Wnk1* mRNA measured across the junction of exons 1 and 2 in control or WNK1-deficient splenic mature B cells, normalized to *Hprt* expression and to *Wnk1* mRNA levels in control B cells (set to 1). (C and D) Mean  $\pm$  SEM numbers of mature B cells in the spleen (B220<sup>+</sup>CD19<sup>+</sup>CD93<sup>+</sup>) and LNs (TCR $\beta$ <sup>+</sup>B220<sup>+</sup>IgM<sup>+</sup>IgD<sup>+</sup>) of RAG1-deficient mice reconstituted with *Wnk1<sup>fl/+</sup>*RCE or *Wnk1<sup>fl/fl</sup>*RCE marrow (C) or with *Wnk1<sup>fl/+</sup>*RCE or *Wnk1<sup>fl/D368A</sup>*RCE marrow (D), as described in A. (E) Top: Immunoblots of total cell lysates from splenic B cells from either *Syk<sup>+/+</sup>* mb1-creERT2 (mb1-CE) or *Syk<sup>fl/fl</sup>* mb1-CE mice that had been treated with tamoxifen for 5 consecutive days 21 d prior, probed with antibodies to p-OXSRI, SYK, or ERK2. Bottom: Graphs of mean  $\pm$  SEM abundance of p-OXSRI and SYK in the lanes above, normalized to ERK2. (F) Mean  $\pm$  SEM binding of soluble VCAM-1 complexes to control or WNK1-deficient B cells in response to treatment with anti-IgM or CXCL13 for the indicated times. (G) Mean  $\pm$  SEM surface levels of CD11a, CXCR5, IgM, and CD40 on control or WNK1-deficient B cells normalized to expression on control B cells (set to 100). (H) Irradiated RAG1-deficient mice were reconstituted with bone marrow from either *Oxsr1<sup>+/+</sup>*RCE or *Oxsr1<sup>fl/fl</sup>*RCE mice, or from *Oxsr1<sup>+/+</sup>**Stk39<sup>T243A/T243A</sup>*RCE or *Oxsr1<sup>fl/fl</sup>**Stk39<sup>T243A/T243A</sup>*RCE mice. At least 56 d later, mice were treated with tamoxifen on 5 consecutive days and analyzed 21 d after the start of tamoxifen. (I and K) Immunoblot analysis (top) of total cell lysates from splenic B cells from RAG1-deficient mice reconstituted with *Oxsr1<sup>+/+</sup>*RCE or *Oxsr1<sup>fl/fl</sup>*RCE marrow (I) or with *Oxsr1<sup>+/+</sup>**Stk39<sup>T243A/T243A</sup>*RCE or *Oxsr1<sup>fl/fl</sup>**Stk39<sup>T243A/T243A</sup>*RCE marrow (K), probed with antibodies to OXSRI and  $\alpha$ -TUBULIN. Graph (bottom) shows mean  $\pm$  SEM amount of OXSRI in the lanes above, normalized to the abundance of  $\alpha$ -TUBULIN in each lane. (J and L) Mean  $\pm$  SEM numbers of mature B cells in the spleen (B220<sup>+</sup>CD19<sup>+</sup>CD93<sup>+</sup>) of RAG1-deficient mice reconstituted with *Oxsr1<sup>+/+</sup>*RCE or *Oxsr1<sup>fl/fl</sup>*RCE marrow (J), or with *Oxsr1<sup>+/+</sup>**Stk39<sup>T243A/T243A</sup>*RCE or *Oxsr1<sup>fl/fl</sup>**Stk39<sup>T243A/T243A</sup>*RCE marrow (L), as described in H. (M) Irradiated RAG1-deficient mice were reconstituted with fetal liver from either *Slc12a2<sup>+/+</sup>* or *Slc12a2<sup>-/-</sup>* fetuses. Mice were analyzed least 56 d later. (N) Mean  $\pm$  SEM numbers of mature B cells in the spleen (B220<sup>+</sup>CD19<sup>+</sup>CD93<sup>+</sup>) of mice described in M. Mann-Whitney test (B-E, I-L, and N); two-way ANOVA (F); \*, 0.01 < P < 0.05; \*\*, 0.001 < P < 0.01; \*\*\*, 0.0001 < P < 0.001; \*\*\*\*, P < 0.0001. Sample sizes: 6 (B and D-F); 5 (C and I); 7 (G and L); 3-4 (J); 12 (K); and 5 control and 4 mutant mice (N). Data are pooled from two independent experiments. Source data are available for this figure: SourceData FS2.







**Figure S4. WNK1 is not required for c-MYC upregulation and is not activated by PI3K, AKT, IKK2, or MEK downstream of CD40. (A and B)** Immunoblot analysis (top) of cell lysates from control or WNK1-deficient B cells stimulated with anti-IgM (A) or CD40L (B) for the indicated times, probed with antibodies to MYC or  $\alpha$ -TUBULIN. Graphs (below) show mean  $\pm$  SEM levels of MYC normalized to the abundance of  $\alpha$ -TUBULIN in each lane. **(C)** Immunoblot analysis (top) of cell lysates from WT mouse B cells stimulated with LPS for the indicated times, probed with antibodies to p-OXSRI and  $\alpha$ -TUBULIN. Graph shows mean  $\pm$  SEM levels of p-OXSRI normalized to the abundance of  $\alpha$ -TUBULIN in each lane. **(D and E)** Top: Immunoblots of total cell lysates from WT mouse B cells treated with vehicle (DMSO), a PI3K inhibitor (PI-103), or an AKT inhibitor (MK2206; D), an IKK2 inhibitor (BI605906) or a MEK1 and MEK2 inhibitor (PD0325901; E) and stimulated for the indicated times with CD40L, probed with antibodies to p-OXSRI, p-AKT, p-PRAS40, p-p105, p-ERK2, or ERK2. Below: graphs of mean  $\pm$  SEM abundance of p-OXSRI, p-AKT, p-PRAS40, p-p105, and p-ERK2 in the lanes above, normalized to ERK2. Two-way ANOVA (A, B, D, and E); Mann-Whitney test (C); \*,  $0.01 < P < 0.05$ ; \*\*,  $0.001 < P < 0.01$ ; \*\*\*,  $0.0001 < P < 0.001$ ; \*\*\*\*,  $P < 0.0001$ . Sample sizes: six (A, B, D, and E); and five (C). Data are pooled from two (A and B) or three (C–E) independent experiments. Source data are available for this figure: SourceData FS4.



**Figure S5. WNK1-deficient B cells fail to generate antigen-specific GCB cells and plasma cells and to divide in vivo.** (A) Flow cytometric analysis of splenocytes from mice immunized with NP-CGG in alum treated as described in Fig. 6 A, showing gating strategy for NP-specific germinal center cells (B220<sup>+</sup>CD19<sup>+</sup>CD95<sup>+</sup>GL7<sup>+</sup>NP<sup>+</sup>) and NP-specific plasma cells (CD138<sup>hi</sup>NP<sup>+</sup>) for control (top row) and mutant mice (bottom row). Numbers on dot plots indicate percentages of cell populations within gates (red boxes). (B) Flow cytometric analysis of splenocytes from mice immunized with NP-CGG in alum treated as described in Fig. 6 D, showing gating strategy for NP-specific germinal center cells (B220<sup>+</sup>CD19<sup>+</sup>CD95<sup>+</sup>GL7<sup>+</sup>NP<sup>+</sup>) and a histogram of human CD2 (huCD2) surface expression on GCB cells (B220<sup>+</sup>CD19<sup>+</sup>CD95<sup>+</sup>GL7<sup>+</sup>) for control (top row) and mutant mice (bottom row). Numbers in dot plots indicate percentages of cell populations within gates (red boxes), numbers on histogram indicate percentage of GCB cells that are negative or positive for huCD2 expression. (C) Flow cytometric analysis of splenocytes from mice treated as described in Fig. 7 A, showing gating strategy for control (top row) and mutant (bottom row) B cells that had been pre-treated with beads conjugated with both anti-IgM and OVA (CD45.1<sup>+</sup>CD45.2<sup>+</sup>B220<sup>+</sup>CD19<sup>+</sup>CMFDA<sup>+</sup>) and transferred into a CD45.1<sup>+</sup>CD45.2<sup>+</sup> host, showing analysis of % transferred B cells that were Ki67<sup>+</sup>. Numbers on dot plots indicate percentages of cell populations within gates (red boxes).



**Video 1.** Video showing representative examples of three-dimensional histology of LNs 40 min after intravenous transfer of either WT (white cells, first half of video) or WNK1-deficient (blue cells, second half of video) B cells and 20 min after intravenous injection of MECA-79 antibody (orange). Analysis of B cell localization from these videos is shown in Fig. 3, C and D.

**Video 2.** A time-lapse video showing migration of B cells in LN follicles analyzed by two-photon intravital microscopy 24 h after transfer of control (white) and WNK1-deficient (blue) B cells into C57BL/6J mice from the experiment described in Fig. 3 G. Images were recorded every 20 s. Analysis of B cell tracks from these videos is shown in Fig. 3, H–M. Time is shown in h:min:s.

**Video 3.** Video from two-photon intravital microscopy of the experiment described in Fig. 7 D, showing WNK1-expressing control B cells (blue), WNK1-deficient (KO) B cells (red), and GFP-expressing OT-II CD4<sup>+</sup> T cells (green), with tracks showing migration of the B cells; transferred polyclonal CD4<sup>+</sup> T cells are not shown. Images were recorded every 30 s. Time is shown in min:s. In the first part of the video, the scale bar represents 20  $\mu$ m; in the second higher magnification part of the video, the scale bar represents 10  $\mu$ m. Analysis of these tracks is shown in Fig. 7, E and F.

**Video 4.** Video from two-photon intravital microscopy of the experiment described in Fig. 7 D, showing WNK1-expressing control B cells (blue), WNK1-deficient (KO) B cells (red), and GFP-expressing OT-II CD4<sup>+</sup> T cells (green), showing interactions between OT-II T cells and control B cells (open arrowhead) or mutant B cells (filled arrowhead); transferred polyclonal CD4<sup>+</sup> T cells are not shown. Images were recorded every 30 s. Time is shown in min:s. In the first part of the video, the scale bar represents 20  $\mu$ m; in the second higher magnification part of the video, the scale bar represents 10  $\mu$ m. Analysis of B-T interaction times is shown in Fig. 7 I.