

# Recognition of gut microbiota by NOD2 is essential for the homeostasis of intestinal intraepithelial lymphocytes

Wei Jiang,<sup>1,2</sup> Xiaqiong Wang,<sup>1,2</sup> Benhua Zeng,<sup>5</sup> Lei Liu,<sup>1,2</sup> Aubry Tardivel,<sup>3</sup> Hong Wei,<sup>5</sup> Jiahuai Han,<sup>6</sup> H. Robson MacDonald,<sup>4</sup> Jurg Tschopp,<sup>3</sup> Zhigang Tian,<sup>1,2</sup> and Rongbin Zhou<sup>1,2</sup>

<sup>1</sup>Hefei National Laboratory for Physical Sciences at the Microscale and <sup>2</sup>School of Life Sciences, University of Science and Technology of China, Hefei, Anhui 230026, China

<sup>3</sup>Department of Biochemistry and <sup>4</sup>Ludwig Center for Cancer Research, University of Lausanne, 1066 Epalinges, Switzerland

<sup>5</sup>Department of Laboratory Animal Science, College of Basic Medical Sciences, Third Military Medical University, Chongqing 400038, China

<sup>6</sup>State Key Laboratory of Cellular Stress Biology, School of Life Sciences, Xiamen University, Xiamen, Fujian 361005, China

**NOD2 functions as an intracellular sensor for microbial pathogen and plays an important role in epithelial defense. The loss-of-function mutation of *NOD2* is strongly associated with human Crohn's disease (CD). However, the mechanisms of how *NOD2* maintains the intestinal homeostasis and regulates the susceptibility of CD are still unclear. Here we found that the numbers of intestinal intraepithelial lymphocytes (IELs) were reduced significantly in *Nod2*<sup>-/-</sup> mice and the residual IELs displayed reduced proliferation and increased apoptosis. Further study showed that *NOD2* signaling maintained IELs via recognition of gut microbiota and IL-15 production. Notably, recovery of IELs by adoptive transfer could reduce the susceptibility of *Nod2*<sup>-/-</sup> mice to the 2,4,6-trinitrobenzene sulfonic acid (TNBS)-induced colitis. Our results demonstrate that recognition of gut microbiota by *NOD2* is important to maintain the homeostasis of IELs and provide a clue that may link *NOD2* variation to the impaired innate immunity and higher susceptibility in CD.**

## CORRESPONDENCE

Rongbin Zhou:  
zrb1980@ustc.edu.cn  
OR

Zhigang Tian:  
tzg@ustc.edu.cn

Abbreviations used: CD, Crohn's disease; DN, double negative; IEC, intestinal epithelial cell; IEL, intraepithelial lymphocyte; MDP, muramyl dipeptide; TNBS, 2,4,6-trinitrobenzene sulfonic acid.

Pattern recognition receptors, including NOD-like receptors (NLRs), TLRs, and RIG-I-like receptor et al., play a key role in the innate immune response by recognizing pathogen-associated molecular patterns derived from a diverse collection of microbial pathogens (Janeway and Medzhitov, 2002; Meylan et al., 2006). *NOD2*, a family member of NLRs, functions as an important intracellular sensor for intracellular bacteria and can detect peptidoglycan through the recognition of muramyl dipeptide (MDP; Meylan et al., 2006; Elinav et al., 2011). After binding with MDP, *NOD2* recruits adaptor protein RIP2 to activate NF- $\kappa$ B and initiate a proinflammatory response (Meylan et al., 2006). Furthermore, *NOD2* was the first identified gene strongly associated with susceptibility to Crohn's disease (CD; Hugot et al., 2001; Ogura et al., 2001), which affects over one million people in North

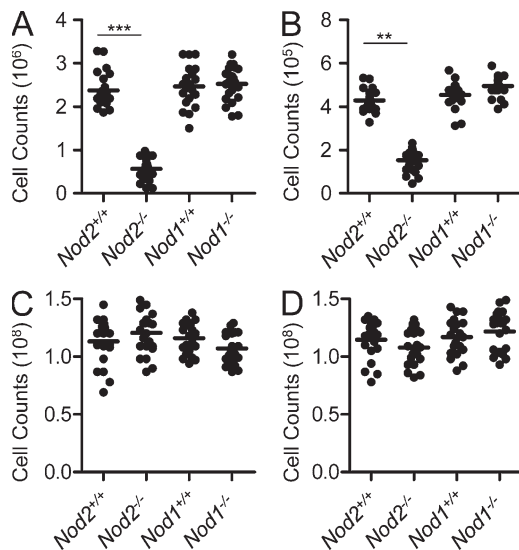
America and Europe and is characterized by diarrhetic colitis and chronic, relapsing inflammation. Although it has been suggested that the loss-of-function mutation of *NOD2* leads to reduced antimicrobial resistance and impaired innate immunity in CD (Comalada and Peppelenbosch, 2006), how *NOD2* mutation causes compromised host defense and contributes to the pathogenesis of this disease remains elusive.

The intestinal intraepithelial lymphocytes (IELs) are mostly T cells dispersed as single cells within the epithelial cell layer and located at the interface between outside and the body. Unlike lymphocytes in spleen, blood, or lymph node, IELs comprise >70% of CD8<sup>+</sup> T cells and include greater numbers of TCR $\gamma\delta$ <sup>+</sup> T cells (Cheroutre, 2004). In addition, a large fraction of these cells

Dr. Tschopp died on 22 March 2011.

X. Wang, B. Zeng, and L. Liu contributed equally to this paper.

© 2013 Jiang et al. This article is distributed under the terms of an Attribution-Noncommercial-Share Alike-No Mirror Sites license for the first six months after the publication date (see <http://www.rupress.org/terms>). After six months it is available under a Creative Commons License (Attribution-Noncommercial-Share Alike 3.0 Unported license, as described at <http://creativecommons.org/licenses/by-nc-sa/3.0/>).



**Figure 1. Loss of IELs in *Nod2*<sup>-/-</sup> mice.** (A and B) The numbers of IELs in the small intestine (A) and colon (B) of mutant mice and individual control mice. \*\*,  $P < 0.01$ ; \*\*\*,  $P < 0.001$ . (C and D) The numbers of total thymocytes (C) and splenocytes (D) of mutant mice and individual control mice. Horizontal bars indicate the mean. 20–25 mice per group from three independent experiments.

express a CD8 $\alpha$  homodimer, which is essentially absent from the circulation. IELs display an “innate” or “memory-like” phenotype and play an important role in the homeostasis of intestinal mucosa (Cheroutre, 2004), and loss of them results in impaired intestinal barrier function and more severe colitis in mice (Hoffmann et al., 2001; Chen et al., 2002; Olivares-Villagómez et al., 2008; Li et al., 2011), suggesting the protective role of IELs in inflammatory bowel diseases. The impaired intestinal barrier function and increased susceptibility to colitis have also been shown in *Nod2*<sup>-/-</sup> mice (Barreau et al., 2007; Penack et al., 2009). However, whether NOD2 affects the homeostasis of IELs is unclear. In this study, we investigated the role of Nod2 signaling in the maintenance of IELs. Our data demonstrate that IELs, especially the “unconventional” TCR $\gamma\delta$ <sup>+</sup> and CD8 $\alpha$ <sup>+</sup>TCR $\alpha\beta$ <sup>+</sup> IELs, are significantly lost when Nod2 signaling is absent. Our data also indicate that loss of IELs contributes to the high susceptibility of *Nod2*<sup>-/-</sup> mice to 2,4,6-trinitrobenzene sulfonic acid (TNBS)-induced colitis.

## RESULTS

### Selectively reduced IEL subsets in *Nod2*<sup>-/-</sup> mice

To investigate whether NOD2 signaling has an impact on the homeostasis of IELs, we first examined the numbers and subpopulation percentages of IELs in *Nod2*<sup>-/-</sup> mice. The total number of IELs in *Nod2*<sup>-/-</sup> mice was reduced significantly in the small intestine and colon (approximately fourfold; Fig. 1, A and B) as compared with wild-type or *Nod1*<sup>-/-</sup> mice. We further examined whether *Nod2* deletion affected the lymphocytes in other immune organs, and the results showed that the total numbers were normal in the thymus or spleen of

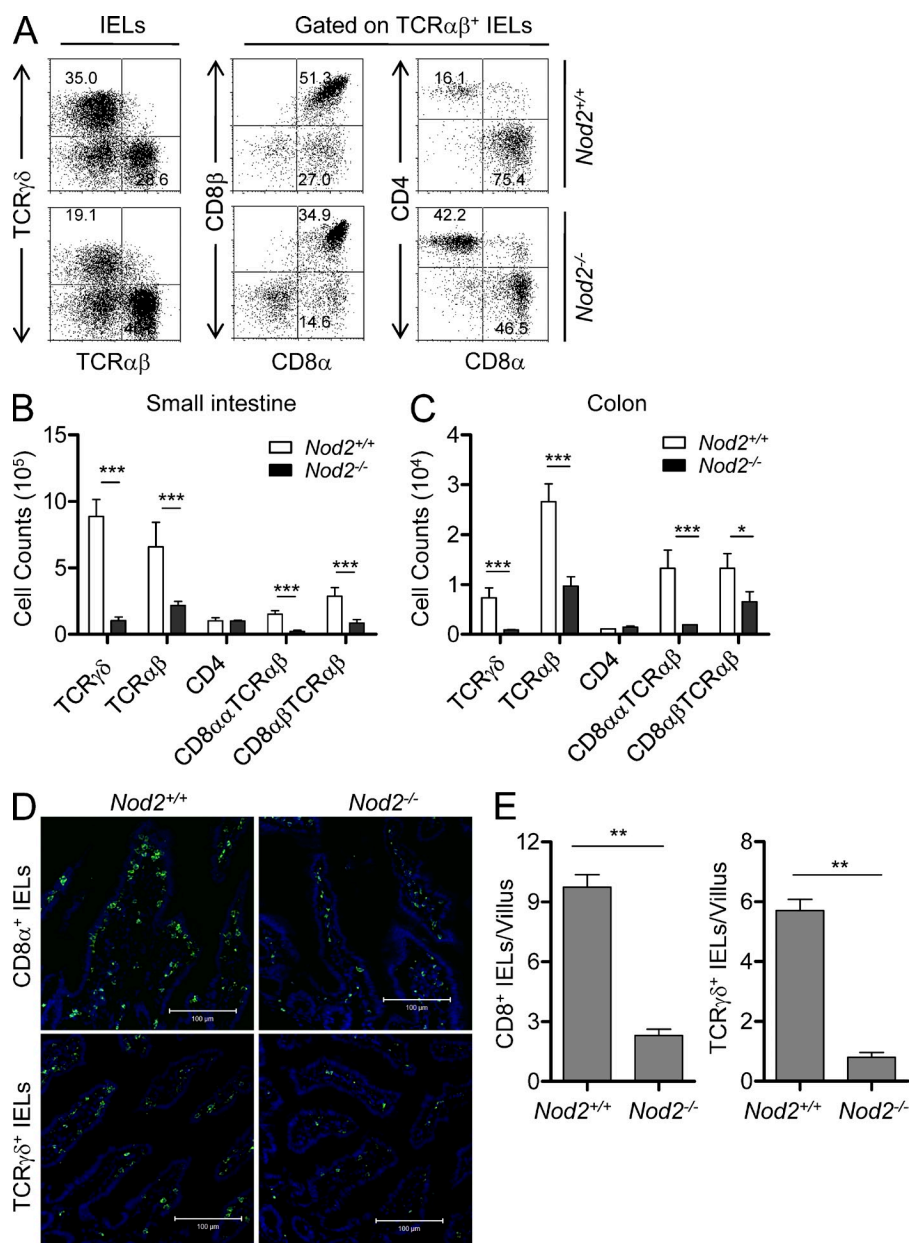
*Nod2*<sup>-/-</sup> mice (Fig. 1, C and D), suggesting that *Nod2* deletion specifically affects the maintenance of intestinal IELs.

IELs are simply classified as TCR $\gamma\delta$ <sup>+</sup>, CD8 $\alpha$ <sup>+</sup>TCR $\alpha\beta$ <sup>+</sup>, CD8 $\alpha\beta$ <sup>+</sup>TCR $\alpha\beta$ <sup>+</sup>, and CD4<sup>+</sup>TCR $\alpha\beta$ <sup>+</sup> IELs. TCR $\gamma\delta$ <sup>+</sup> and CD8 $\alpha$ <sup>+</sup>TCR $\alpha\beta$ <sup>+</sup> IELs are regarded as unconventional T cells bearing innate-like phenotypes (Cheroutre, 2004; Cheroutre and Lambolez, 2008). Although CD8 $\alpha\beta$ <sup>+</sup>TCR $\alpha\beta$ <sup>+</sup> IELs are conventional T cells, the majority of them exhibit memory-like phenotype (Cheroutre, 2004). Further analysis of small intestinal IELs in *Nod2*<sup>-/-</sup> mice revealed that the unconventional TCR $\gamma\delta$ <sup>+</sup> (approximately eightfold) and CD8 $\alpha$ <sup>+</sup>TCR $\alpha\beta$ <sup>+</sup> IELs (approximately sixfold) were dramatically reduced and the memory-like CD8 $\alpha\beta$ <sup>+</sup>TCR $\alpha\beta$ <sup>+</sup> IEL subset was significantly reduced (approximately threefold), whereas the CD4<sup>+</sup> IEL subset was normal (Fig. 2, A and B). Similar results were also observed in the colon of *Nod2*<sup>-/-</sup> mice (Fig. 2 C). The loss of CD8<sup>+</sup> and TCR $\gamma\delta$ <sup>+</sup> IELs in *Nod2*<sup>-/-</sup> mice was also confirmed by staining of CD8 $\alpha$  and TCR $\gamma\delta$  in sections of small intestine (Fig. 2, D and E). These data thus indicate a critical and selective role for Nod2 in the homeostasis of TCR $\gamma\delta$ <sup>+</sup> and CD8 $\alpha$ <sup>+</sup>TCR $\alpha\beta$ <sup>+</sup> IELs.

RIP2 is a critical adaptor protein for NOD2 to initiate downstream signaling. To confirm the role of Nod2 signaling in the maintenance of intestinal IELs, we examined *Rip2*<sup>-/-</sup> mice. Similar to the results observed in *Nod2*<sup>-/-</sup> mice, the TCR $\gamma\delta$ <sup>+</sup> and CD8 $\alpha$ <sup>+</sup>TCR $\alpha\beta$ <sup>+</sup> IELs were also dramatically reduced in *Rip2*<sup>-/-</sup> mice as compared with control mice (Fig. 3, A and B). Collectively, these results indicate that Nod2 signaling plays a critical and selective role for the maintenance of IELs in the intestine.

### Nod2 signaling is not required for the development of IELs in the thymus

Because mice with *Nod2* deletion lack IELs, especially TCR $\gamma\delta$ <sup>+</sup> and CD8 $\alpha$ <sup>+</sup>TCR $\alpha\beta$ <sup>+</sup> IELs, we investigated whether Nod2 signaling had an impact on the development of IELs in the thymus. First, our results showed that the percentages of T and B cells were normal in the thymus or spleen of *Nod2*<sup>-/-</sup> mice (Fig. 4 A), suggesting that *Nod2* deletion has no impact on the development of conventional lymphocytes in the thymus. Despite early studies suggesting that IELs can develop extra-thymically, more recent studies indicate that the majority of them are derived from thymic precursors, at least in the presence of thymus (Cheroutre and Lambolez, 2008). We then examined the frequencies of TCR $\gamma\delta$ <sup>+</sup> T cells in the spleen, and no differences were observed in *Nod2*<sup>-/-</sup> mice as compared with control mice (Fig. 4 B). Recent evidence suggests that CD8 $\alpha$ <sup>+</sup>TCR $\alpha\beta$ <sup>+</sup> IELs are derived from CD4<sup>-</sup>CD8<sup>-</sup> (double negative [DN]) NK1.1<sup>-</sup>TCR $\alpha\beta$ <sup>+</sup> thymocytes, which can give rise to CD8 $\alpha$ <sup>+</sup>TCR $\alpha\beta$ <sup>+</sup> IELs when transferred into *Rag2*<sup>-/-</sup> mice (Gangadharan et al., 2006). We therefore investigated whether this putative IEL precursor population was affected by *Nod2* deletion. The analysis showed that DN NK1.1<sup>-</sup>TCR $\alpha\beta$ <sup>+</sup> thymocytes were present in normal frequencies in *Nod2*<sup>-/-</sup> mice (Fig. 4 C). These results indicate that *Nod2* deficiency has no effect on the development of TCR $\gamma\delta$ <sup>+</sup>



**Figure 2. Selectively reduced IEL subsets in *Nod2*<sup>-/-</sup> mice.** (A) IELs from *Nod2*<sup>+/+</sup> or *Nod2*<sup>-/-</sup> mice were stained as indicated. Numbers in the dot plots indicate the percentage of cells represented in the quadrant. (B and C) The absolute numbers of the indicated IEL subsets in the small intestine (B) or colon (C) of individual mice. \*, *P* < 0.05; \*\*\*, *P* < 0.001. 20–25 mice per group from three independent experiments. (D) Tissue samples from the small intestine of *Nod2*<sup>-/-</sup> or *Nod2*<sup>+/+</sup> mice were stained with anti-TCRγδ or anti-CD8α (green) antibody and DAPI (blue). Bars, 100 μm. (E) Quantification of anti-TCRγδ or anti-CD8α staining in the villi of *Nod2*<sup>-/-</sup> or *Nod2*<sup>+/+</sup> mice. Data were from 50 villi per sample. \*\*, *P* < 0.01. Representative of three experiments. Error bars indicate SEM.

and CD8α<sup>+</sup>TCRαβ<sup>+</sup> IELs in the thymus and *Nod2* signaling affects the maintenance of these IELs, possibly by impacting the gut environment. This idea was also supported by the results showing that the numbers and frequencies of CD8<sup>+</sup> memory T cells in the spleen were normal (Fig. 4 D), whereas the memory-like CD8αβ<sup>+</sup>TCRαβ<sup>+</sup> IELs were reduced in *Nod2*<sup>-/-</sup> mice. These results suggest that *Nod2* signaling is not required for the development of IELs in thymus.

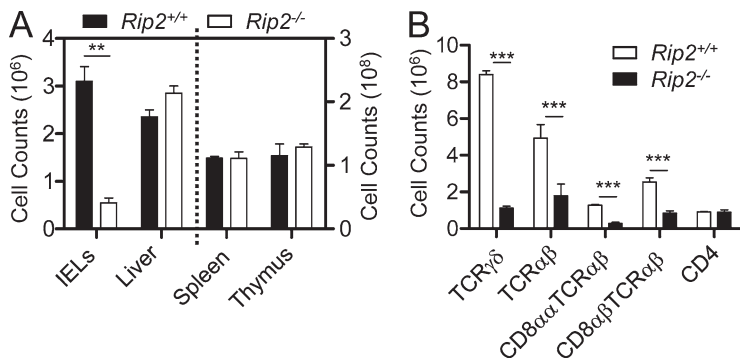
#### IELs display reduced proliferation and increased apoptosis in *Nod2*<sup>-/-</sup> mice

To further explore the reason for loss of IELs in *Nod2*<sup>-/-</sup> mice, we examined whether *Nod2* deletion affected the proliferation and apoptosis of IELs. The isolated IELs from *Nod2*<sup>-/-</sup> mice were stained with Ki67 and annexin-V as the

marker for proliferation and apoptosis, respectively. TCRγδ<sup>+</sup>, CD8α<sup>+</sup>TCRαβ<sup>+</sup>, and CD8αβ<sup>+</sup>TCRαβ<sup>+</sup> IELs showed poorer proliferation and higher apoptosis in *Nod2*<sup>-/-</sup> mice, whereas the CD4<sup>+</sup> IELs were normal (Fig. 5, A and B). The poorer proliferation of TCRγδ<sup>+</sup>, CD8α<sup>+</sup>TCRαβ<sup>+</sup>, and CD8αβ<sup>+</sup>TCRαβ<sup>+</sup> IELs was also confirmed by BrdU incorporation assay (Fig. 5 C). These results were consistent with loss of IEL subsets in *Nod2*<sup>-/-</sup> mice, suggesting that *Nod2* regulates the homeostasis of IELs by affecting their proliferation and survival.

#### *Nod2* signaling maintains IELs via recognition of gut microbiota

NOD2 is an intracellular sensor not only for microbial but also for commensal bacteria (Kobayashi et al., 2005; Petnicki-Ocwieja



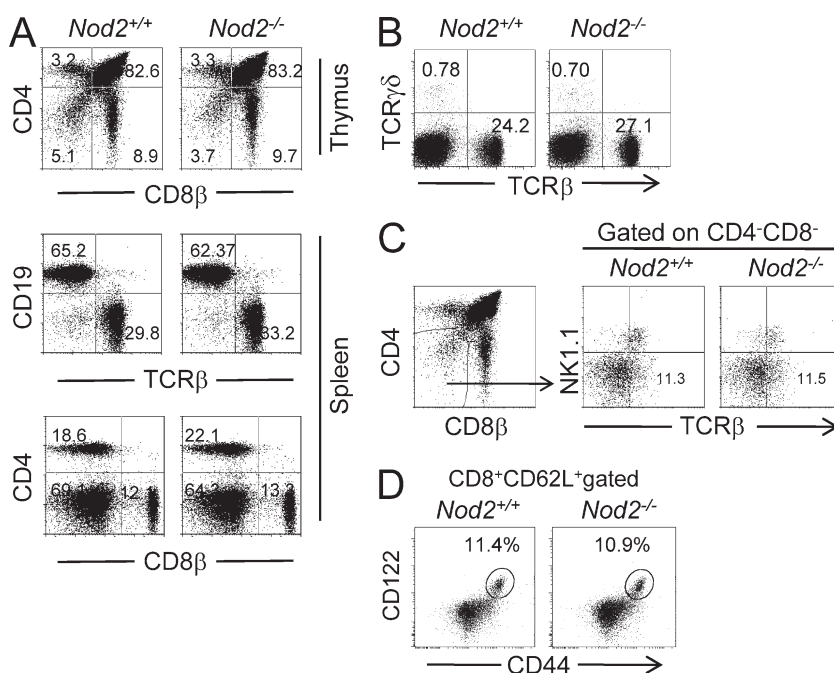
**Figure 3. Loss of IELs in *Rip2*<sup>-/-</sup> mice.** (A) Quantification of total numbers of small intestinal IELs, liver lymphocytes, splenocytes, and thymocytes in wild-type mice and *Rip2*<sup>-/-</sup> mice. \*\*,  $P < 0.01$ . (B) The absolute numbers of the indicated IEL subsets in wild-type mice and *Rip2*<sup>-/-</sup> mice. \*\*\*,  $P < 0.001$ . Five mice per group. Representative of three experiments. Error bars indicate SEM.

et al., 2009). *Nod2* expression in the intestine is dependent on the presence of gut microbiota, and *Nod2*<sup>-/-</sup> mice have an increased load of commensal resident bacteria (Petnicki-Ocwieja et al., 2009). Moreover, the commensal bacteria in the gut are also required for the maintenance of IELs (Kawaguchi et al., 1993), but the mechanisms remain unclear. Thus, we investigated whether the gut microbiota maintained IELs via NOD2 signaling. To deplete gut microbiota in the intestine of mice, we fed mice with a cocktail of antibiotics after birth (Rakoff-Nahoum et al., 2004). After 6 wk, the load of bacteria was reduced significantly in antibiotic-treated mice (Fig. 6 A). Consistent with the results observed in germ-free mice, depletion of the gut microbiota reduced the IEL numbers in the intestine but had no effect on the lymphocytes from other immune organs, including thymus, spleen, and liver (Fig. 6 B). Importantly, the total numbers of IELs could be recovered significantly by supplementation of NOD2 agonist MDP in drinking water (Fig. 6 C). In contrast, supplementation of iEDAP, an agonist for NOD1, did not increase the IELs in gut microbiota-depleted mice (Fig. 6 C). Further analysis of IEL

subsets in MDP-supplemented mice revealed that NOD2 activation by MDP treatment selectively and significantly recovered TCRγδ<sup>+</sup> and CD8αα<sup>+</sup>TCRαβ<sup>+</sup> IELs, whereas it didn't have an effect on CD8αβ<sup>+</sup>TCRαβ<sup>+</sup> IELs (Fig. 6, D and E). We also analyzed the subpopulations of lymphocytes, including B, CD4<sup>+</sup>T, CD8<sup>+</sup>T, NKT, and NK cells in the spleen of gut microbiota-depleted mice, and no differences were observed (Fig. 6 F). Collectively, these results indicate that NOD2 signaling maintains the IELs via sensing of gut microbiota.

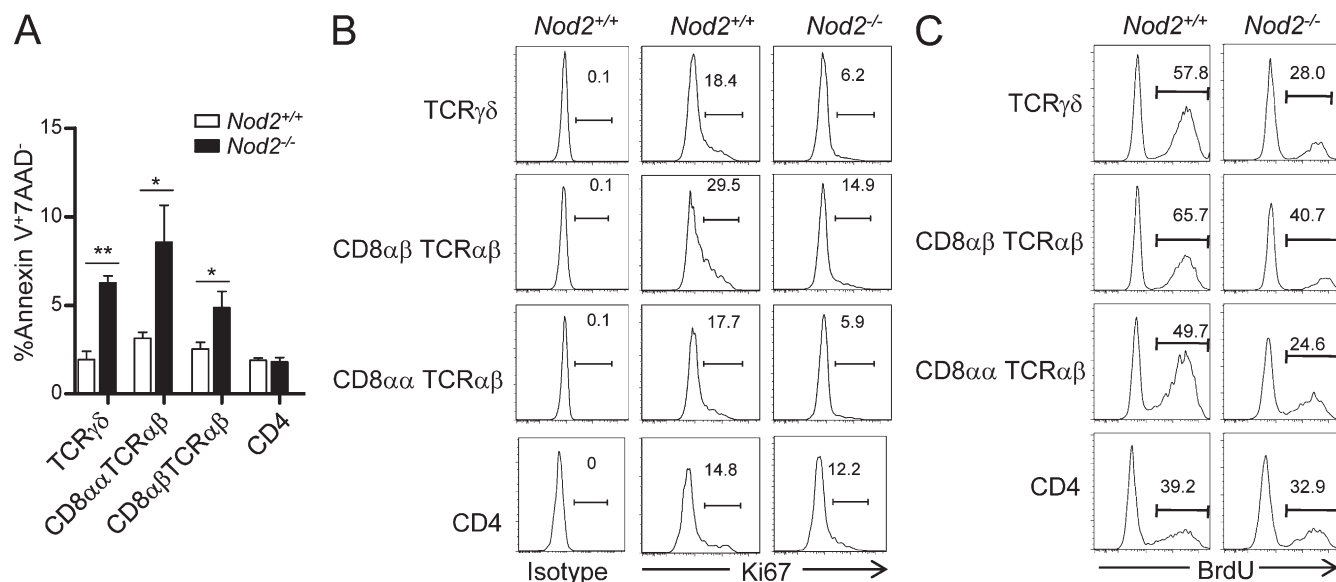
#### Nod2 signaling in the hematopoietic system-derived APCs maintains IELs

To further investigate how *Nod2* signaling maintains IELs, we then determined whether IEL-intrinsic or -extrinsic mechanisms were responsible for the specific reduction in IELs. Adoptive transfer of BM cells from *Nod2*<sup>+/+</sup> mice and *Nod2*<sup>-/-</sup> mice both reconstituted IELs in Rag1-deficient hosts (Fig. 7, A and B), suggesting that IEL-intrinsic *Nod2* signaling is not required for the homeostasis of IELs. This was consistent with the results showing that no expression of *Nod2* was detected



**Figure 4. Normal subsets in the thymus and spleen of *Nod2*<sup>-/-</sup> mice.** (A) The thymocytes and splenocytes from *Nod2*<sup>+/+</sup> or *Nod2*<sup>-/-</sup> mice were stained as indicated. (B) The splenocytes from *Nod2*<sup>-/-</sup> mice were stained as indicated. (A and B) Numbers in the dot plots indicate the percentage of cells represented in the quadrant. (C) Analysis of putative thymic IEL precursors in *Nod2*<sup>+/+</sup> and *Nod2*<sup>-/-</sup> mice. Total thymocytes were stained as indicated. DN thymocytes were analyzed for NK1.1 and TCRβ expression. Numbers in the quadrants indicate percentages. (D) The splenocytes from *Nod2*<sup>-/-</sup> mice were stained as indicated. The percentages of memory CD8<sup>+</sup> T cells are shown. Five mice per group. Representative of two or three experiments.





**Figure 5. Nod2 is required for the homeostasis of IELs.** (A) Bar graph represents the percentage of apoptotic (annexin-V<sup>+</sup>7AAD<sup>-</sup>) IEL subsets in *Nod2*<sup>+/+</sup> and *Nod2*<sup>-/-</sup> mice. Error bars indicate SEM. \*,  $P < 0.05$ ; \*\*,  $P < 0.01$ . (B) Ki67 expression on IEL subsets of *Nod2*<sup>+/+</sup> and *Nod2*<sup>-/-</sup> mice. (C) *Nod2*<sup>+/+</sup> and *Nod2*<sup>-/-</sup> mice were injected with BrdU (1.8 mg/mouse) and then fed with BrdU in drinking water (0.8 mg/ml). After 4 d, BrdU incorporation in the indicated IEL subsets was analyzed by flow cytometry. Experiments were performed in at least three mice per group. One representative experiment out of two or three is shown.

in IELs (Fig. 7 C). As Nod2 was expressed in parenchymal cells, including intestinal epithelial cells (IECs), and some hematopoietic system-derived APCs, such as macrophages and DCs (Fig. 7 C), we then determined whether Nod2 signaling in hematopoietic or parenchymal cells is responsible for the maintenance of IELs. When BM cells from CD45.1<sup>+</sup> WT mice were transferred into lethally irradiated *Nod2*<sup>+/+</sup> or *Nod2*<sup>-/-</sup> mice, after 8 wk, there was no difference for the reconstitution of IELs (Fig. 7, D and E), suggesting that Nod2 signaling in parenchymal cells, including IECs, is not responsible for the homeostasis of IELs. When BM cells from *Nod2*<sup>+/+</sup> or *Nod2*<sup>-/-</sup> mice were transferred into lethally irradiated CD45.1<sup>+</sup> WT mice, after 8 wk, TCR $\gamma\delta$ <sup>+</sup> and CD8 $\alpha$ <sup>+</sup>TCR $\alpha\beta$ <sup>+</sup> in mice transferred with *Nod2*<sup>-/-</sup> BM cells were poorly reconstituted compared with mice transferred with *Nod2*<sup>+/+</sup> BM cells (Fig. 7, D and E), suggesting that Nod2 signaling in hematopoietic cells is required for the homeostasis of IELs. Because IEL-intrinsic Nod2 signaling was not involved (Fig. 7, A and B), these results indicate that Nod2 signaling in the hematopoietic system-derived APCs, such as macrophages or DCs, might be critical for the homeostasis of IELs.

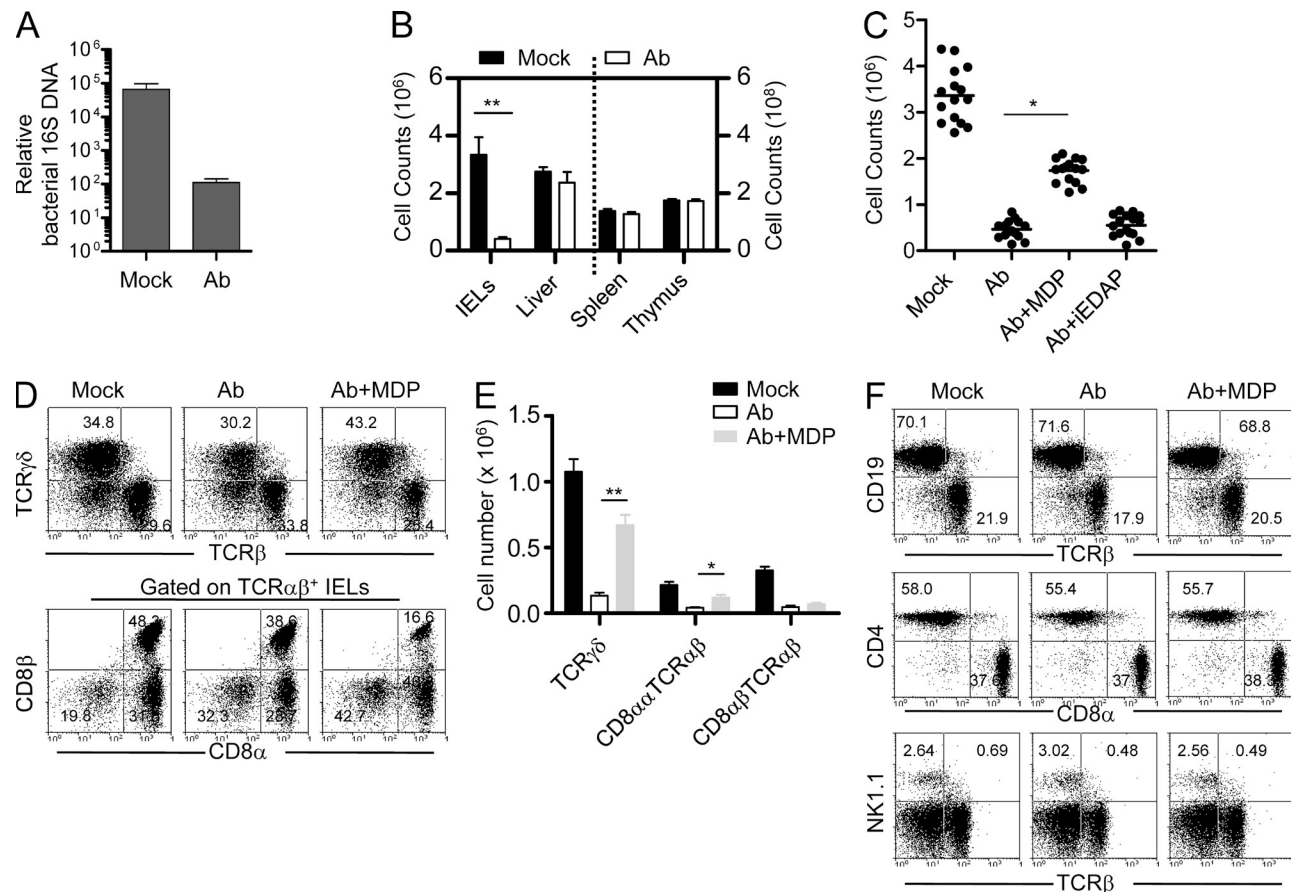
#### Impaired IL-15 expression results in the loss of IELs in *Nod2*<sup>-/-</sup> mice

IL-15 is an NF- $\kappa$ B target gene, and more importantly, the IL-15 enrichment environment in the gut is critical for the survival and homeostasis of IEL subsets (Cao et al., 1995; Washizu et al., 1998). We thus investigated whether Nod2 signaling affected the proliferation and apoptosis of IELs via IL-15. First, exogenous IL-15 administration recovered the IEL loss in *Nod2*<sup>-/-</sup> mice partially (Fig. 8 A), suggesting that the impaired expression

of IL-15 might be responsible for the loss of IELs in *Nod2*<sup>-/-</sup> mice. Consistent with the results in *Nod2*<sup>-/-</sup> mice, *Il-15*<sup>-/-</sup> mice showed reduced TCR $\gamma\delta$ <sup>+</sup>, CD8 $\alpha$ <sup>+</sup>TCR $\alpha\beta$ <sup>+</sup>, and CD8 $\alpha$ <sup>+</sup>TCR $\alpha\beta$ <sup>+</sup> IELs but normal CD4<sup>+</sup> IELs (Fig. 8 B). Importantly, MDP supplementation could not recover the IEL loss in *Il-15*<sup>-/-</sup> mice. We then examined the expression of IL-15 in IECs, intestinal macrophages, and DCs and found that macrophages and DCs expressed higher IL-15 and in the basal condition (Fig. 8 C). As expected, the basal or MDP-induced expression of IL-15 in macrophages was decreased when *Nod2* was absent (Fig. 8 D). Furthermore, our results showed that MDP treatment up-regulated IL-15 expression in macrophages in a *Nod2*- and *Rip2*-dependent manner (Fig. 8 E). Because MDP supplementation rescued the loss of IELs in gut microbiota-depleted mice, we also examined whether MDP could recover the IL-15 expression. As expected, gut microbiota-depleted mice showed lower IL-15 expression in macrophages, whereas MDP treatment restored the expression of IL-15 (Fig. 8 F), suggesting that Nod2 signaling might maintain the expression of IL-15 via recognition of microbiota. These results indicate that the reduced IL-15 expression contributes to the loss of IELs in *Nod2*<sup>-/-</sup> mice.

#### IEL loss contributes to the high susceptibility to TNBS-induced colitis in *Nod2*<sup>-/-</sup> mice

IELs inhabit the intestinal epithelial barriers and provide a first line of defense against environmental challenges or pathogen invading via stimulating repair of damaged epithelia and limiting bacterial penetration (Cheroutre, 2004). Loss of TCR $\gamma\delta$ <sup>+</sup> IELs or CD8 $\alpha$ <sup>+</sup>TCR $\alpha\beta$ <sup>+</sup> IELs in mice aggravates colitis in several animal models and results in impaired ability to



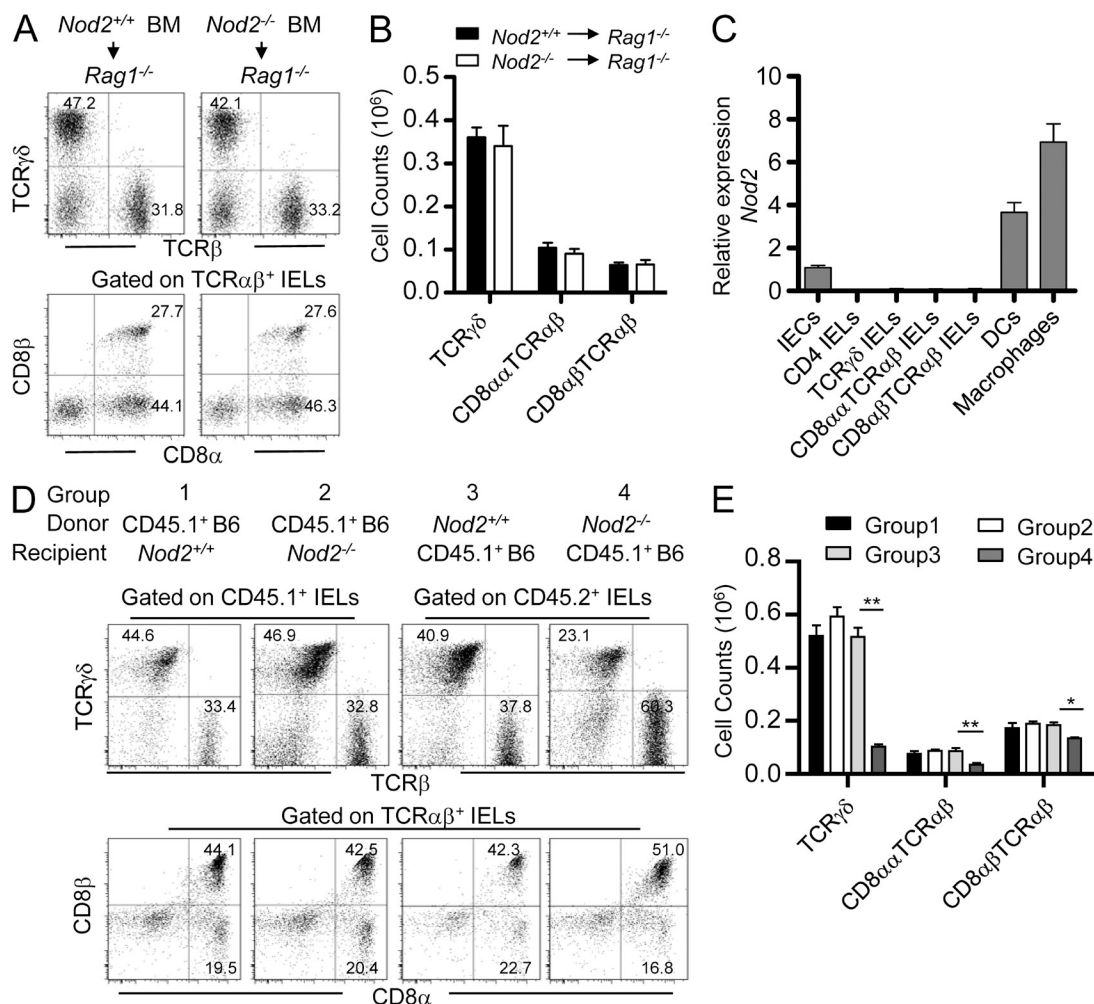
**Figure 6. Nod2 signaling maintains IELs via recognition of gut microbiota.** (A) Bacterial 16S DNA were determined by quantitative PCR and normalized to total mouse genomic DNA in the same pellets of mice treated with antibiotics (Ab) for 6 wk. (B) Quantification of total numbers of small intestinal IELs, liver lymphocytes, splenocytes, and thymocytes in antibiotic (Ab)-treated and control mice (Mock). \*\*,  $P < 0.01$ . (C) Quantification of total numbers of small intestinal IELs in mice treated with antibiotics alone (Ab) or in the presence of MDP (Ab + MDP) or iEDAP (Ab + iEDAP). Horizontal bars indicate the mean. \*,  $P < 0.05$ . (D and E) The percentages (D) or absolute numbers (E) of the indicated IEL subsets in the small intestine of mice treated with antibiotics alone (Ab) or in the presence of MDP (Ab + MDP) or iEDAP (Ab + iEDAP) are shown. \*,  $P < 0.05$ ; \*\*,  $P < 0.01$ . At least 15 mice per group. (F) Mice were treated with antibiotics (Ab) with or without the presence of MDP, and the splenocytes were stained as indicated. Numbers in the dot plots indicate the percentage of cells represented in the quadrant. Three to five mice per group. Representative of three experiments. Error bars indicate SEM.

control bacterial overgrowth (Ninomiya et al., 2000; Hoffmann et al., 2001; Olivares-Villagómez et al., 2008), suggesting a critical role of IELs in the mucosal defense and epithelial homeostasis. Similarly, *Nod2*<sup>-/-</sup> mice are susceptible to the colitis induced by TNBS (Barreau et al., 2007; Penack et al., 2009), but the mechanisms are unclear. We thus studied whether the loss of IELs contributed to the high susceptibility of *Nod2*<sup>-/-</sup> mice to colitis. To do this, we transferred CD8<sup>+</sup> IELs and splenic CD8<sup>+</sup> T cells from wild-type mice to *Nod2*<sup>-/-</sup> mice and found that adoptive transfer of CD8<sup>+</sup> IELs could recover the IEL loss in *Nod2*<sup>-/-</sup> mice partially (Fig. 9 A). Consistent with previous studies (Barreau et al., 2007; Penack et al., 2009), challenge of *Nod2*<sup>-/-</sup> mice with TNBS resulted in higher mortality and colitis scores as compared with control mice (Fig. 9, B–D). Moreover, when *Nod2*<sup>-/-</sup> mice were transferred with CD8<sup>+</sup> IELs from wild-type mice to recover the loss of IELs by *Nod2* deletion, the mortality and histology damage were

alleviated significantly (Fig. 9, B–D), suggesting that recovery of IELs in *Nod2*<sup>-/-</sup> mice can reduce the high susceptibility of these mice to colitis. Furthermore, consistent with the finding that MDP supplementation restored the IELs partially in gut microbiota-depleted mice, MDP treatment reduced the colitis induced by TNBS in these mice (Fig. 10, A and B). Collectively, these results indicate that the loss of IELs in *Nod2*<sup>-/-</sup> mice caused by failing to recognize gut microbiota contributes to the impaired innate immune defense and high susceptibility to colitis in these mice.

## DISCUSSION

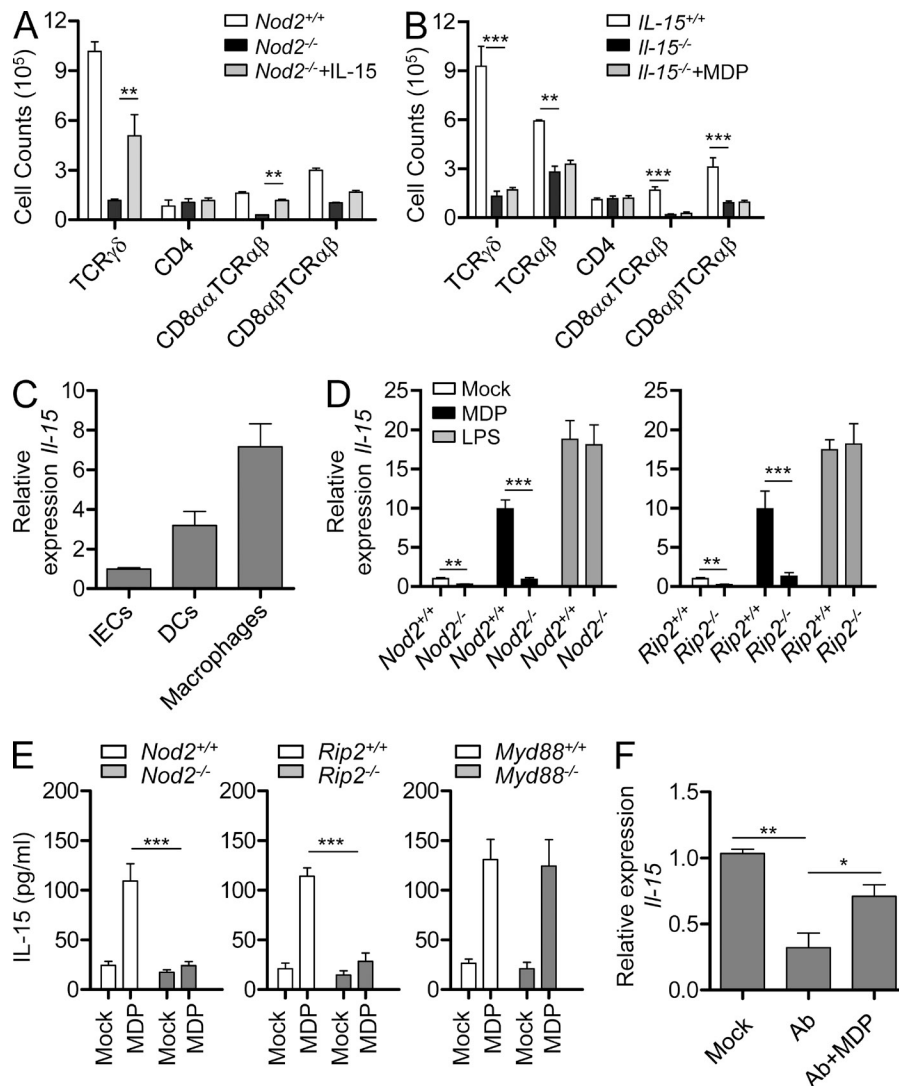
We show here that Nod2 signaling is important to maintain IELs in the intestine. Mice with *Nod2* or *Rip2* deletion lacked IELs, especially the unconventional TCRγδ<sup>+</sup> IELs and CD8α<sup>+</sup>TCRαβ<sup>+</sup> IELs, in the small intestine and colon. In contrast, the lymphocytes in thymus, spleen, and liver



**Figure 7. Nod2 signaling in the hematopoietic system-derived APCs maintains IELs.** (A and B) FACS analysis of IELs of the indicated BM chimeras of *Nod2*<sup>+/+</sup> or *Nod2*<sup>-/-</sup> BM cells into irradiated *Rag1*<sup>-/-</sup> mice. The percentages (A) or absolute numbers (B) of the indicated IEL subsets are shown. (C) Isolated IECs, sorted IEL subsets, macrophages, and DCs were determined by quantitative PCR, and the relative expression of *Nod2* is shown. (D and E) FACS analysis of IELs of the indicated BM chimeras of CD45.1<sup>+</sup> WT BM cells into irradiated *Nod2*<sup>+/+</sup> or *Nod2*<sup>-/-</sup> mice, or *Nod2*<sup>+/+</sup> or *Nod2*<sup>-/-</sup> BM cells into irradiated CD45.1<sup>+</sup> WT mice. The percentages (D) or absolute numbers (E) of the indicated IEL subsets are shown. Numbers in the dot plots indicate the percentage of cells represented in the quadrant. \*, *P* < 0.05; \*\*, *P* < 0.01. Five mice per group. Representative of two experiments. Error bars indicate SEM.

remained normal. In *Nod2*<sup>-/-</sup> mice, the residual IELs displayed reduced proliferation and increased apoptosis. Furthermore, we found that *Nod2* signaling maintained IELs via recognition of gut microbiota because supplementation of NOD2 agonist MDP recovered the IELs in gut microbiota-depleted mice. The loss of IELs in *Nod2*<sup>-/-</sup> mice was caused by the impaired expression of IL-15 in APCs, and supplementation of IL-15 rescued the IEL loss caused by *Nod2* deletion. Importantly, recovery of IELs by adoptive transfer of IELs to *Nod2*<sup>-/-</sup> mice could reduce the susceptibility of the mice to TNBS-induced colitis. Thus, our results demonstrate a previously unrecognized role for *Nod2* signaling in the homeostasis of IELs and probably provide a new clue for the observed impaired host defense in *Nod2*<sup>-/-</sup> mice and patients with CD.

*Nod2*<sup>-/-</sup> mice have been reported to be more susceptible to oral infection with *Listeria monocytogenes* (Kobayashi et al., 2005), suggesting the important role of NOD2 signaling in epithelial defense. The current knowledge for the mechanism of defective epithelial defense in *Nod2*<sup>-/-</sup> mice is that these mice show impaired production of defensins by Paneth cells (Kobayashi et al., 2005). However, the defensin defect in *Nod2*<sup>-/-</sup> mice is limited, and only several, but not all, defensins are modestly decreased, questioning the role of these limited changes on relevant antimicrobial defense in the intestine (Kobayashi et al., 2005). In this study, we show that IELs are dramatically reduced in *Nod2*<sup>-/-</sup> mice. IELs play a critical role for maintaining the integrity of the epithelial barrier, and loss of TCR $\gamma\delta$ <sup>+</sup> IELs results in higher bacterial penetration of the intestinal mucosa (Ismail et al., 2011). The higher permeability



**Figure 8. Impaired IL-15 expression results in the loss of IELs in *Nod2*<sup>-/-</sup> mice.**

(A) *Nod2*<sup>-/-</sup> mice were treated with IL-15 for 2 wk, and the absolute numbers of the indicated small intestinal IEL subsets are shown. (B) The absolute numbers of the indicated small intestinal IEL subsets in *IL-15*<sup>-/-</sup> mice or *IL-15*<sup>-/-</sup> mice treated with MDP for 4 wk. (C) cDNA from IECs, intestinal macrophages, or DCs was assayed for *IL-15* expression by quantitative PCR. Expression levels were normalized to IECs. (D) *Nod2*<sup>-/-</sup> mice were injected with 0.5 mg/kg LPS or 5 mg/kg MDP, and after 3 h, intestinal macrophages were isolated and sorted for analyzing *IL-15* expression by quantitative PCR. (E) Sorted intestinal macrophages from mutant mice were treated with 50 μg/ml MDP for 24 h, and supernatants were analyzed by ELISA for IL-15. (F) Sorted intestinal macrophages of mice treated with antibiotics alone (Ab) or in the presence of MDP (Ab + MDP) was assayed for *IL-15* expression by quantitative PCR. Expression levels were normalized to the nontreated group. \*, *P* < 0.05; \*\*, *P* < 0.01; \*\*\*, *P* < 0.001. Experiments were performed in at least three mice per group. One representative experiment out of two or three is shown. Error bars indicate SEM.

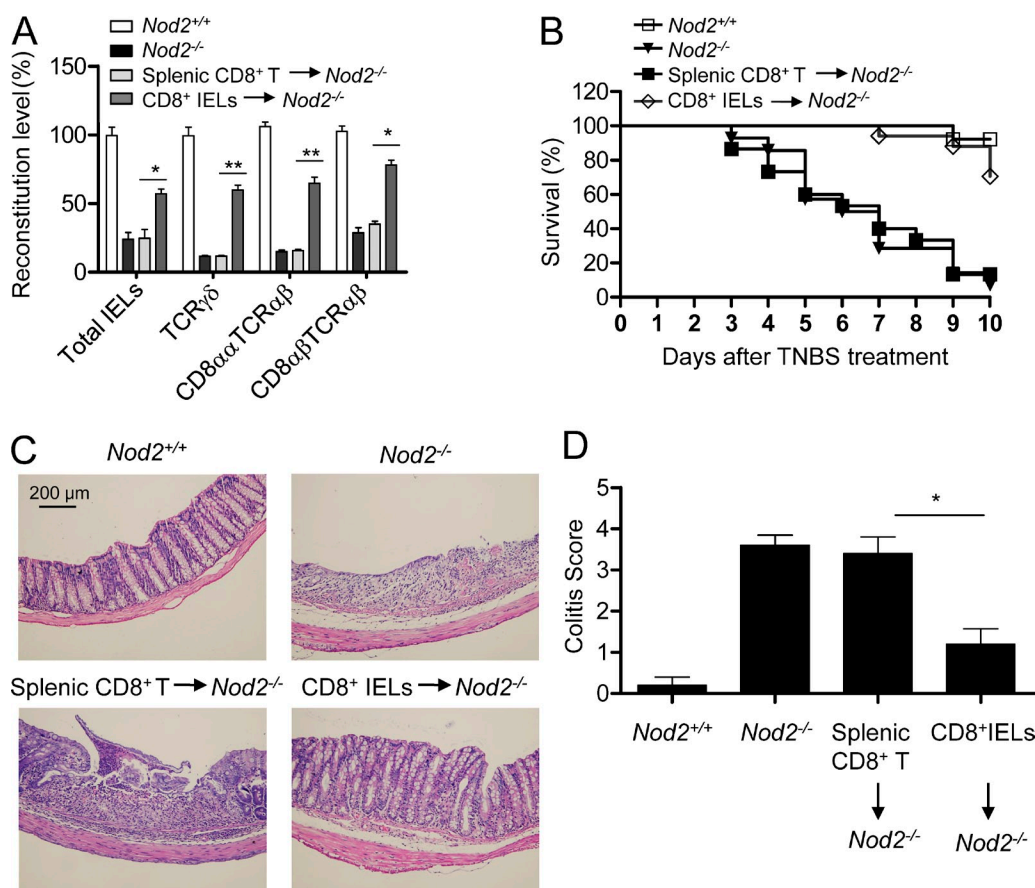
for bacteria translocation in the intestinal mucosa is also observed in *Nod2*<sup>-/-</sup> mice (Barreau et al., 2007), suggesting that the defect of IELs may play an important role in the intestinal barrier dysfunction in *Nod2*<sup>-/-</sup> mice.

Although the etiology of CD is poorly understood, increasing evidence from genetics, functional studies on innate immunity, and therapeutic trials on patients suggest that CD results from impaired innate immunity and dysfunction of mucosal barrier (Comalada and Peppelenbosch, 2006; Marks et al., 2006). The genetic association of *NOD2* with CD established a critical link between innate immunity and the development of the disease, but the underlying mechanisms remain controversial. The CD-associated *NOD2* variants show impaired ability to recognize microbial components and lack of activation of NF-κB in monocytes (Hugot et al., 2001). However, the higher NF-κB activity is observed in patients with CD (Podolsky, 2002). Defensin levels are noted to be lower in the Paneth cells of patients with mutant *NOD2* (Wehkamp et al., 2005), but recent work has shown that defensin deficiency in

CD is independent of the *NOD2* genotype (Simms et al., 2008). In this study, our results suggest that IEL dysregulation caused by loss of function of *NOD2* may favor the onset of CD. Indeed, multiple studies have described a decreased level of the TCRγδ<sup>+</sup> IELs in patients with CD (Fukushima et al., 1991; Lee et al., 1997). This idea is also supported by the results showing that loss of TCRγδ<sup>+</sup> IELs or CD8αα<sup>+</sup>TCRαβ<sup>+</sup> IELs aggravates colitis in the mouse model (Hoffmann et al., 2001; Olivares-Villagómez et al., 2008).

Gut microbiota resides in the intestine and has a beneficial effect ranging from aiding in metabolism to competing with invasive pathogens (Sonnenburg et al., 2006; Honda and Littman, 2012). Increasing evidence from germ-free mice or antibiotic-treated mice reveals that gut microbiota is important for the lymphoid tissue development in the intestine (Abt and Artis, 2009). IELs are a unique T cell population located between IECs and function as a critical component of the epithelial barrier. IELs reduced dramatically in germ-free mice (Guy-Grand et al., 1991; Kawaguchi et al., 1993; Suzuki et al., 2002), suggesting





**Figure 9. IEL loss contributes to the high susceptibility to TNBS-induced colitis in *Nod2*<sup>-/-</sup> mice.** (A) Sorted splenic CD8<sup>+</sup> T cells or CD8<sup>+</sup> IELs from wild-type mice were transferred into *Nod2*<sup>-/-</sup> mice to reconstitute IELs, and 3 d later, the numbers of total IELs or indicated IEL subsets were counted and the reconstitution levels were normalized to the corresponding numbers of total IELs or indicated IEL subsets in *Nod2*<sup>+/+</sup> mice. \*, *P* < 0.05; \*\*, *P* < 0.01. Three mice per group. (B–D) Sorted splenic CD8<sup>+</sup> T cells or CD8<sup>+</sup> IELs from wild-type mice were transferred into *Nod2*<sup>-/-</sup> mice, and 3 d later, the mice were treated with TNBS, and the survival rate (B), H&E staining of colon sections (C), and colitis scores (D) are shown. \*, *P* < 0.05. 13–17 mice per group. One representative experiment out of two is shown. Error bars indicate SEM.

the important role of gut microbiota in the maintenance of IELs. In this study, we demonstrate that gut microbiota-derived products, probably MDP, can signal NOD2 to maintain IELs. Thus, our data provide a new mechanism through which gut microbiota controls the homeostasis of IELs. However, it is unclear which bacterial species are associated with the homeostasis of IELs observed in this study. It will be important to define the commensal bacterial species that elicit this effect.

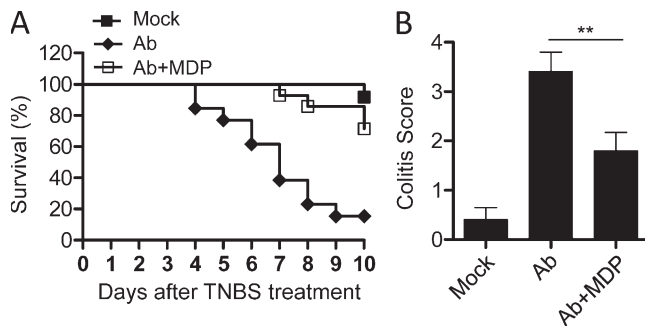
NOD2 has an important role in host defense against the invasive intracellular pathogen, including *L. monocytogenes* (Kobayashi et al., 2005); however, little is known whether NOD2 can recognize commensal bacteria. In this study, we demonstrate that Nod2 maintains IELs via recognition of gut microbiota, suggesting the important role of Nod2 in sensing of commensal bacteria. Interestingly, the expression of Nod2 in the intestine is dependent on the presence of gut microbiota (Petnicki-Ocwieja et al., 2009). In summary, our results demonstrate that NOD2 signaling by sensing of gut microbiota is important for maintaining the homeostasis of IELs and

suggest that IEL loss may contribute to the impaired innate immunity and higher susceptibility to mucosal damage in *Nod2*<sup>-/-</sup> mice and patients with CD.

## MATERIALS AND METHODS

**Mice.** *Nod2*<sup>-/-</sup>, *Rip2*<sup>-/-</sup>, and *Myd88*<sup>-/-</sup> mice were described previously (Adachi et al., 1998; Kobayashi et al., 2002, 2005). *Nod1*<sup>-/-</sup> mice were provided by Millennium Pharmaceuticals. *Il15*<sup>-/-</sup> mice were originally provided by Immunex. CD45.1<sup>+</sup> and Rag1<sup>-/-</sup> mice were purchased from the Jackson Laboratory. All mice were from a C57BL/6 background. The littermates of the mutant mice were used as control. All animal experiments were approved by a local ethics committee (the Ethics Committee of the University of Science and Technology of China; Service Vétérinaire Cantonal, Lausanne, Switzerland).

**Cell preparations.** Thymocyte and splenocyte suspensions were prepared by grinding the organs through mesh filters. IELs were isolated as previously described (Jiang et al., 2010). In brief, Peyer's patches were removed, and then the small intestine or colon was opened longitudinally and cut into 1-cm-long pieces. After washing the specimens in PBS containing 100 U/ml penicillin and 100 µg/ml streptomycin twice, the pieces were then stirred at 37°C in prewarmed Dulbecco's modified Eagle's medium containing 100 U/ml penicillin, 100 µg/ml streptomycin, and 5% FCS for 30 min.



**Figure 10. MDP supplementation reduces the susceptibility of gut microbiota-depleted mice to TNBS-induced colitis.** (A and B) Mice were treated with antibiotics (Ab) with or without the presence of MDP and then treated with TNBS, and the survival rate (A) and colitis scores (B) are shown. 12–15 mice per group. \*\*,  $P < 0.01$ . One representative experiment out of two is shown. Error bars indicate SEM.

The supernatants were then separated by a 40–70% Percoll density gradient (GE Healthcare), and the cells that layered between the 40–70% fractions were collected as IELs. After IEL isolation, tissues were shook in PBS containing 1.3 mM EDTA at 37°C for 30 min. This step was repeated and the supernatants were discarded. LPLs were then isolated after digestion in RPMI 1640 supplemented with 100 U/ml collagenase (Sigma-Aldrich), 1 mM  $\text{CaCl}_2$ , 1 mM  $\text{MgCl}_2$ , and 5% FCS at 37°C for 30 min. Released cells were then washed in PBS containing 5% FCS and subjected to Percoll fractionation as described above for isolation of IELs. Intestinal macrophages ( $\text{F4/80}^+$ ) and DCs ( $\text{CD11b}^-\text{CD11c}^+$ ) were purified from LPLs by cell sorting. IEC isolation and culture were performed as previously described (Zhou et al., 2007).

**Antibodies and flow cytometry.** The following mAb conjugates were used: TCR $\gamma\delta$  (GL3)-FITC, -PE, and -allophycocyanin; TCR $\beta$  (H57)-PE-Cy5, -allophycocyanin, and -allophycocyanin-eFluor780; CD4 (GK1.5)-FITC, and -PE-Cy7; CD8 $\alpha$  (53.6.7)-PE-Cy7, -allophycocyanin, and -allophycocyanin-eFluor780; CD8 $\beta$  (H35)-FITC, -PE, and -PE-Cy7; CD19 (1D3)-PE; CD44 (IM781)-allophycocyanin-Cy7; CD62L (Mel-14)-FITC; CD122 (IL-2R $\beta$ , TM- $\beta$ 1)-PE; and CD161 (PK136)-peridinin chlorophyll protein-Cy5.5. All antibodies were obtained from BD or eBioscience. BD Canto or Verse cytometers were used for flow cytometry, and data were analyzed using WinMDI or FlowJo (Tree Star). Fluorescence-activated cell sorting was performed using a FACS Aria flow cytometer (BD).

**Cell proliferation and apoptosis analysis.** Cell proliferation and apoptosis assay were performed as previously described (Jiang et al., 2010). In brief, IELs were labeled with the appropriate mAb and then fixed and permeabilized using the BD Perm&Fix kit (BD) and subsequently stained with anti-Ki67-FITC (B56; BD) for 1 h. After washing, cells were analyzed on a flow cytometer (Verse; BD). For analysis of apoptosis, cells were stained with an annexin-V staining kit according (BD) to the manufacturer's protocol.

**Gut microbiota depletion and MDP reconstitution.** The gut microbiota was depleted by feeding antibiotics in drinking water as previously described (Rakoff-Nahoum et al., 2004). In brief, mice were provided 1 g/liter ampicillin (Sigma-Aldrich), 500 mg/liter vancomycin (Sigma-Aldrich), 1 g/liter neomycin sulfate (Sigma-Aldrich), and 1 g/liter metronidazole (Sigma-Aldrich) in drinking water for 6 wk before treatment with TNBS. The depletion effects were evaluated by bacteria 16S rRNA gene quantification as previously reported (Reikvam et al., 2011). Mice were supplemented with MDP or iEDAP (InvivoGen) drinking water at a fixed concentration of 1  $\mu\text{M}$  from the age of 2 wk for 4 wk to reconstitute MDP or iEDAP in the intestine.

**Colitis model.** Induction of TNBS (Sigma-Aldrich) colitis was performed as described previously (Scheiffele and Fuss, 2002). Severity of colitis was assessed using a semiquantitative scoring system (Scheiffele and Fuss, 2002).

**Immunofluorescence.** Frozen sections of tissues were stained with FITC-CD8 $\alpha$  or FITC-TCR $\gamma\delta$  antibodies (eBioscience) and then mounted using ProLong Gold reagent with DAPI (Invitrogen). Confocal images were obtained using an LSM 700 microscope (Carl Zeiss), and for image analysis we used the LSM software (Carl Zeiss).

**ELISA.** Tissues were homogenized, and then the lysates were assayed for mouse IL-15 (eBioscience) according to the manufacturer's instructions.

**Adoptive transfer.** For prevention of chemical-induced colitis, CD8 $^+$  IELs or splenic T cells were isolated from wild-type mice and sorted and then were intravenously transferred into  $\text{Nod2}^{-/-}$  mice (200  $\mu\text{l}$  PBS/ $10^7$  cells). 3 d later, the mice were used to analyze IELs or induce colitis using TNBS or DSS.

For BM chimera experiments,  $\text{Nod2}^{+/+}$  or  $\text{Nod2}^{+/+}$  BM cells were intravenously transferred into  $\text{Rag1}^{2/2}$  mice, or CD45.1 $^+$  WT BM cells were intravenously transferred into lethally irradiated (12 Gy given 1 d before adoptive transfer)  $\text{Nod2}^{+/+}$  or  $\text{Nod2}^{+/+}$  mice, or  $\text{Nod2}^{+/+}$  or  $\text{Nod2}^{+/+}$  or  $\text{Nod2}^{+/+}$  BM cells were intravenously transferred into lethally irradiated CD45.1 $^+$  WT mice. After 8 wk, IELs were analyzed by flow cytometry.

**In vivo treatment with IL-15.** Mice were injected intraperitoneally with PBS or PBS containing human IL-15 (5  $\mu\text{g}/\text{mouse}$ ; R&D Systems) once daily for 2 wk. IELs were harvested 24 h after the last injection of IL-15.

**Real-time PCR.** The *Il-15* and *Nod2* primers were obtained from SABiosciences. Real-time PCR using SYBR was performed on a LightCycler (Roche) as previously described (Jiang et al., 2010).

**Hematoxylin and eosin (H&E) staining.** For histology, colon tissue was fixed in 10% neutral-buffered formalin and embedded in paraffin. 5- $\mu\text{m}$  sections were affixed to slides, deparaffinized, and stained with H&E. Morphological changes in the stained sections were examined under light microscopy (BX53; Olympus).

**Statistical analysis.** Data are expressed as mean  $\pm$  SEM. Differences were analyzed by Student's *t* test (with 95% confidence interval). *P*-values  $< 0.05$  were considered significant.

We thank Yonglin Chen and Jianlin Geng for technical assistance and Dr. Shizuo Akira (Osaka University, Osaka, Japan) for providing the *Myd88* $^{-/-}$  mice.

Work in Prof. Zhou's laboratory was supported by the National Natural Science Foundation of China (81273318, 81222040, and 31200659), the National Basic Research Program of China (2013CB944904), the Doctoral Fund of Ministry of Education of China (20123402120001 and 20123402110010), the One Hundred Person Project (R. Zhou) and Chinese Academy of Sciences (CAS) President's fund (R. Zhou) from the CAS, the Fundamental Research Funds for the Central Universities (R. Zhou and W. Jiang), the Anhui Provincial Natural Science Foundation, and the start-up funds (R. Zhou and W. Jiang) from the University of Science and Technology of China. Work in Prof. Tschoep's laboratory was supported by grants from the Swiss National Science Foundation, the National Center of Competence in Research in Molecular Oncology, the Institute for Arthritis Research, the Foundation Louis-Jeantet, and the EU-FP7 program APO-SYS. Work in Prof. Wei's laboratory was supported by the National Basic Research Program of China (2013CB531406).

The authors have no conflicting financial interests.

Author contributions: W. Jiang performed the majority of the experiments for this work; X. Wang, B. Zeng, L. Liu, and A. Tardivel performed experiments. W. Jiang, H. Wei, H.R. MacDonald, J. Han, J. Tschoep, Z. Tian, and R. Zhou designed the research. W. Jiang, Z. Tian, and R. Zhou wrote the manuscript. R. Zhou supervised the project.

Submitted: 7 November 2012

Accepted: 23 August 2013

## REFERENCES

- Abt, M.C., and D. Artis. 2009. The intestinal microbiota in health and disease: the influence of microbial products on immune cell homeostasis. *Curr. Opin. Gastroenterol.* 25:496–502. <http://dx.doi.org/10.1097/MOG.0b013e328331b6b4>
- Adachi, O., T. Kawai, K. Takeda, M. Matsumoto, H. Tsutsui, M. Sakagami, K. Nakanishi, and S. Akira. 1998. Targeted disruption of the MyD88 gene results in loss of IL-1- and IL-18-mediated function. *Immunity*. 9:143–150. [http://dx.doi.org/10.1016/S1074-7613\(00\)80596-8](http://dx.doi.org/10.1016/S1074-7613(00)80596-8)
- Barreau, F., U. Meinzer, F. Chareyre, D. Berrebi, M. Niwa-Kawakita, M. Dussaillant, B. Foligne, V. Ollendorff, M. Heyman, S. Bonacorsi, et al. 2007. CARD15/NOD2 is required for Peyer's patches homeostasis in mice. *PLoS ONE*. 2:e523. <http://dx.doi.org/10.1371/journal.pone.0000523>
- Cao, X., E.W. Shores, J. Hu-Li, M.R. Anver, B.L. Kelsall, S.M. Russell, J. Drago, M. Noguchi, A. Grinberg, E.T. Bloom, et al. 1995. Defective lymphoid development in mice lacking expression of the common cytokine receptor gamma chain. *Immunity*. 2:223–238. [http://dx.doi.org/10.1016/1074-7613\(95\)90047-0](http://dx.doi.org/10.1016/1074-7613(95)90047-0)
- Chen, Y., K. Chou, E. Fuchs, W.L. Havran, and R. Boismenu. 2002. Protection of the intestinal mucosa by intraepithelial gamma delta T cells. *Proc. Natl. Acad. Sci. USA*. 99:14338–14343. <http://dx.doi.org/10.1073/pnas.212290499>
- Cheroutre, H. 2004. Starting at the beginning: new perspectives on the biology of mucosal T cells. *Annu. Rev. Immunol.* 22:217–246. <http://dx.doi.org/10.1146/annurev.immunol.22.012703.104522>
- Cheroutre, H., and F. Lambolez. 2008. The thymus chapter in the life of gut-specific intra epithelial lymphocytes. *Curr. Opin. Immunol.* 20:185–191. <http://dx.doi.org/10.1016/j.coi.2008.03.009>
- Comalada, M., and M.P. Peppelenbosch. 2006. Impaired innate immunity in Crohn's disease. *Trends Mol. Med.* 12:397–399. <http://dx.doi.org/10.1016/j.molmed.2006.07.005>
- Elina, E., T. Strowig, J. Henao-Mejia, and R.A. Flavell. 2011. Regulation of the antimicrobial response by NLR proteins. *Immunity*. 34:665–679. <http://dx.doi.org/10.1016/j.immuni.2011.05.007>
- Fukushima, K., T. Masuda, H. Ohtani, I. Sasaki, Y. Funayama, S. Matsuno, and H. Nagura. 1991. Immunohistochemical characterization, distribution, and ultrastructure of lymphocytes bearing T-cell receptor gamma/delta in inflammatory bowel disease. *Gastroenterology*. 101:670–678.
- Gangadharan, D., F. Lambolez, A. Attinger, Y. Wang-Zhu, B.A. Sullivan, and H. Cheroutre. 2006. Identification of pre- and postselection TCR-alpha-beta+ intraepithelial lymphocyte precursors in the thymus. *Immunity*. 25:631–641. <http://dx.doi.org/10.1016/j.immuni.2006.08.018>
- Guy-Grand, D., N. Cerf-Bensussan, B. Malissen, M. Malassis-Seris, C. Briottet, and P. Vassalli. 1991. Two gut intraepithelial CD8+ lymphocyte populations with different T cell receptors: a role for the gut epithelium in T cell differentiation. *J. Exp. Med.* 173:471–481. <http://dx.doi.org/10.1084/jem.173.2.471>
- Hoffmann, J.C., K. Peters, S. Henschke, B. Herrmann, K. Pfister, J. Westermann, and M. Zeitz. 2001. Role of T lymphocytes in rat 2,4,6-trinitrobenzene sulphonic acid (TNBS) induced colitis: increased mortality after gammadelta T cell depletion and no effect of alphabeta T cell depletion. *Gut*. 48:489–495. <http://dx.doi.org/10.1136/gut.48.4.489>
- Honda, K., and D.R. Littman. 2012. The microbiome in infectious disease and inflammation. *Annu. Rev. Immunol.* 30:759–795. <http://dx.doi.org/10.1146/annurev-immunol-020711-074937>
- Hugot, J.P., M. Chamaillard, H. Zouali, S. Lesage, J.P. Cézard, J. Belaiche, S. Almer, C. Tysk, C.A. O'Morain, M. Gassull, et al. 2001. Association of NOD2 leucine-rich repeat variants with susceptibility to Crohn's disease. *Nature*. 411:599–603. <http://dx.doi.org/10.1038/35079107>
- Ismail, A.S., K.M. Severson, S. Vaishnava, C.L. Behrendt, X. Yu, J.L. Benjamin, K.A. Ruhn, B. Hou, A.L. DeFranco, F. Yarovsky, and L.V. Hooper. 2011. Gammadelta intraepithelial lymphocytes are essential mediators of host-microbial homeostasis at the intestinal mucosal surface. *Proc. Natl. Acad. Sci. USA*. 108:8743–8748. <http://dx.doi.org/10.1073/pnas.1019574108>
- Janeway, C.A. Jr., and R. Medzhitov. 2002. Innate immune recognition. *Annu. Rev. Immunol.* 20:197–216. <http://dx.doi.org/10.1146/annurev.immunol.20.083001.084359>
- Jiang, W., I. Ferrero, E. Laurenti, A. Trumpp, and H.R. MacDonald. 2010. c-Myc controls the development of CD8alphaalpha TCRalphabeta intestinal intraepithelial lymphocytes from thymic precursors by regulating IL-15-dependent survival. *Blood*. 115:4431–4438. <http://dx.doi.org/10.1182/blood-2009-11-254698>
- Kawaguchi, M., M. Nanno, Y. Umesaki, S. Matsumoto, Y. Okada, Z. Cai, T. Shimamura, Y. Matsuoka, M. Ohwaki, and H. Ishikawa. 1993. Cytolytic activity of intestinal intraepithelial lymphocytes in germ-free mice is strain dependent and determined by T cells expressing gamma delta T-cell antigen receptors. *Proc. Natl. Acad. Sci. USA*. 90:8591–8594. <http://dx.doi.org/10.1073/pnas.90.18.8591>
- Kobayashi, K., N. Inohara, L.D. Hernandez, J.E. Galán, G. Núñez, C.A. Janeway, R. Medzhitov, and R.A. Flavell. 2002. RICK/Rip2/CARDIAK mediates signalling for receptors of the innate and adaptive immune systems. *Nature*. 416:194–199. <http://dx.doi.org/10.1038/416194a>
- Kobayashi, K.S., M. Chamaillard, Y. Ogura, O. Henegariu, N. Inohara, G. Núñez, and R.A. Flavell. 2005. Nod2-dependent regulation of innate and adaptive immunity in the intestinal tract. *Science*. 307:731–734. <http://dx.doi.org/10.1126/science.1104911>
- Lee, H.B., J.H. Kim, C.Y. Yim, D.G. Kim, and D.S. Ahn. 1997. Differences in immunophenotyping of mucosal lymphocytes between ulcerative colitis and Crohn's disease. *Korean J. Intern. Med.* 12:7–15.
- Li, Y., S. Innocentin, D.R. Withers, N.A. Roberts, A.R. Gallagher, E.F. Grigorieva, C. Wilhelm, and M. Veldhoen. 2011. Exogenous stimuli maintain intraepithelial lymphocytes via aryl hydrocarbon receptor activation. *Cell*. 147:629–640. <http://dx.doi.org/10.1016/j.cell.2011.09.025>
- Marks, D.J., M.W. Harbord, R. MacAllister, F.Z. Rahman, J. Young, B. Al-Lazikani, W. Lees, M. Novelli, S. Bloom, and A.W. Segal. 2006. Defective acute inflammation in Crohn's disease: a clinical investigation. *Lancet*. 367:668–678. [http://dx.doi.org/10.1016/S0140-6736\(06\)68265-2](http://dx.doi.org/10.1016/S0140-6736(06)68265-2)
- Meylan, E., J. Tschopp, and M. Karin. 2006. Intracellular pattern recognition receptors in the host response. *Nature*. 442:39–44. <http://dx.doi.org/10.1038/nature04946>
- Ninomiya, T., H. Takimoto, G. Matsuzaki, S. Hamano, H. Yoshida, Y. Yoshikai, G. Kimura, and K. Nomoto. 2000. Vgamma1+ gammadelta T cells play protective roles at an early phase of murine cytomegalovirus infection through production of interferon-gamma. *Immunology*. 99:187–194. <http://dx.doi.org/10.1046/j.1365-2567.2000.00938.x>
- Ogura, Y., D.K. Bonen, N. Inohara, D.L. Nicolae, F.F. Chen, R. Ramos, H. Britton, T. Moran, R. Karaliuskas, R.H. Duerr, et al. 2001. A frameshift mutation in NOD2 associated with susceptibility to Crohn's disease. *Nature*. 411:603–606. <http://dx.doi.org/10.1038/35079114>
- Olivares-Villagómez, D., Y.V. Mendez-Fernandez, V.V. Parekh, S. Lalani, T.L. Vincent, H. Cheroutre, and L. Van Kaer. 2008. Thymus leukemia antigen controls intraepithelial lymphocyte function and inflammatory bowel disease. *Proc. Natl. Acad. Sci. USA*. 105:17931–17936. <http://dx.doi.org/10.1073/pnas.0808242105>
- Penack, O., O.M. Smith, A. Cunningham-Bussell, X. Liu, U. Rao, N. Yim, I.K. Na, A.M. Holland, A. Ghosh, S.X. Lu, et al. 2009. NOD2 regulates hematopoietic cell function during graft-versus-host disease. *J. Exp. Med.* 206:2101–2110. <http://dx.doi.org/10.1084/jem.20090623>
- Petnicki-Ocwieja, T., T. Hrnčir, Y.J. Liu, A. Biswas, T. Hudcovic, H. Tlaskalova-Hogenova, and K.S. Kobayashi. 2009. Nod2 is required for the regulation of commensal microbiota in the intestine. *Proc. Natl. Acad. Sci. USA*. 106:15813–15818. <http://dx.doi.org/10.1073/pnas.0907722106>
- Podolsky, D.K. 2002. Inflammatory bowel disease. *N. Engl. J. Med.* 347:417–429. <http://dx.doi.org/10.1056/NEJMr020831>
- Rakoff-Nahoum, S., J. Paglino, F. Eslami-Varzaneh, S. Edberg, and R. Medzhitov. 2004. Recognition of commensal microflora by toll-like receptors is required for intestinal homeostasis. *Cell*. 118:229–241. <http://dx.doi.org/10.1016/j.cell.2004.07.002>
- Reikvam, D.H., A. Erofeev, A. Sandvik, V. Grcic, F.L. Jahnsen, P. Gaustad, K.D. McCoy, A.J. Macpherson, L.A. Meza-Zepeda, and F.E. Johansen. 2011. Depletion of murine intestinal microbiota: effects on gut mucosa and epithelial gene expression. *PLoS ONE*. 6:e17996. <http://dx.doi.org/10.1371/journal.pone.0017996>
- Scheffele, F., and I.J. Fuss. 2002. Induction of TNBS colitis in mice. *Curr. Protoc. Immunol.* Chapter 15:19.

- Simms, L.A., J.D. Doecke, M.D. Walsh, N. Huang, E.V. Fowler, and G.L. Radford-Smith. 2008. Reduced alpha-defensin expression is associated with inflammation and not NOD2 mutation status in ileal Crohn's disease. *Gut*. 57:903–910. <http://dx.doi.org/10.1136/gut.2007.142588>
- Sonnenburg, J.L., C.T. Chen, and J.I. Gordon. 2006. Genomic and metabolic studies of the impact of probiotics on a model gut symbiont and host. *PLoS Biol.* 4:e413. <http://dx.doi.org/10.1371/journal.pbio.0040413>
- Suzuki, H., K.I. Jeong, K. Itoh, and K. Doi. 2002. Regional variations in the distributions of small intestinal intraepithelial lymphocytes in germ-free and specific pathogen-free mice. *Exp. Mol. Pathol.* 72:230–235. <http://dx.doi.org/10.1006/exmp.2002.2433>
- Washizu, J., H. Nishimura, N. Nakamura, Y. Nimura, and Y. Yoshikai. 1998. The NF-kappaB binding site is essential for transcriptional activation of the IL-15 gene. *Immunogenetics*. 48:1–7. <http://dx.doi.org/10.1007/s002510050393>
- Wehkamp, J., N.H. Salzman, E. Porter, S. Nuding, M. Weichenthal, R.E. Petras, B. Shen, E. Schaeffeler, M. Schwab, R. Linzmeier, et al. 2005. Reduced Paneth cell alpha-defensins in ileal Crohn's disease. *Proc. Natl. Acad. Sci. USA*. 102:18129–18134. <http://dx.doi.org/10.1073/pnas.0505256102>
- Zhou, R., H. Wei, R. Sun, J. Zhang, and Z. Tian. 2007. NKG2D recognition mediates Toll-like receptor 3 signaling-induced breakdown of epithelial homeostasis in the small intestines of mice. *Proc. Natl. Acad. Sci. USA*. 104:7512–7515. <http://dx.doi.org/10.1073/pnas.0700822104>