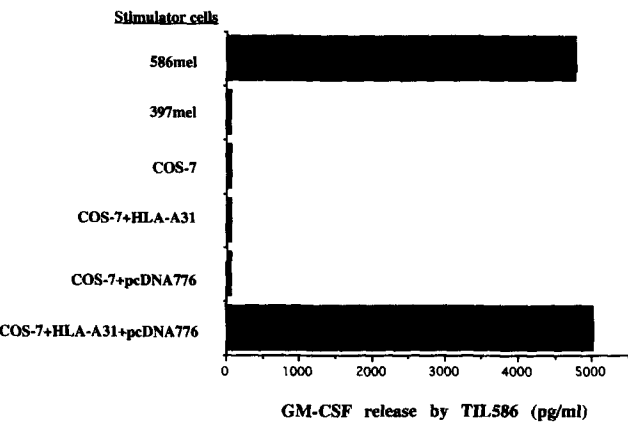
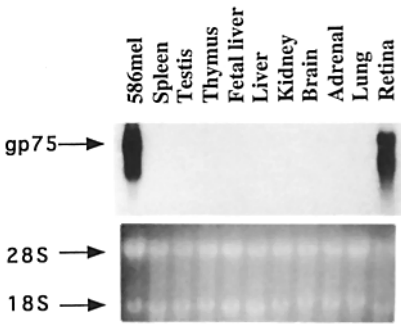


In the article, "Identification of a gene encoding a melanoma tumor antigen recognized by HLA-A31-restricted tumor-infiltrating lymphocytes," by R.-F. Wang, P. F. Robbins, Y. Kawakami, X.-Q. Kang, and S. A. Rosenberg (February 1995, 181:799-804), the legends to Figures 1 and 2 were switched. The figures and their legends appear below.



**Figure 1.** GM-CSF release by TIL586. GM-CSF secretion from TIL586 was significantly increased when co-incubated with COS-7 cells transfected with gp75 and HLA-A31 genes as described in Materials and Methods. Control stimulatory cells included HLA-A31 586mel, 397mel, COS cell alone, and COS cells transfected with either HLA-A31 or the gp75 cDNA. TIL586 was co-incubated with stimulatory cells for 24 h and GM-CSF in the supernatant was measured.



**Figure 2.** Northern blot analysis of the gp75 expression. 20  $\mu$ g of total RNAs from different human tissues was loaded. After blotting, the membrane was probed with a 2.2-kb Apal DNA fragment of the gp75 gene. The detected band for gp75 was marked. The 28S and 18S RNA were also marked and served as a indication of similar amount of RNA being used.