

In the article "Amelioration of B16F10 melanoma lung metastasis in mice by a combination therapy with indomethacin and interleukin 2" by Ranjit S. Parhar and Peeyush K. Lala (January 1987, 165:14), Fig. 2, *C* and *D* is mislabeled in the legend. The figure is reprinted below, with the correct legend.

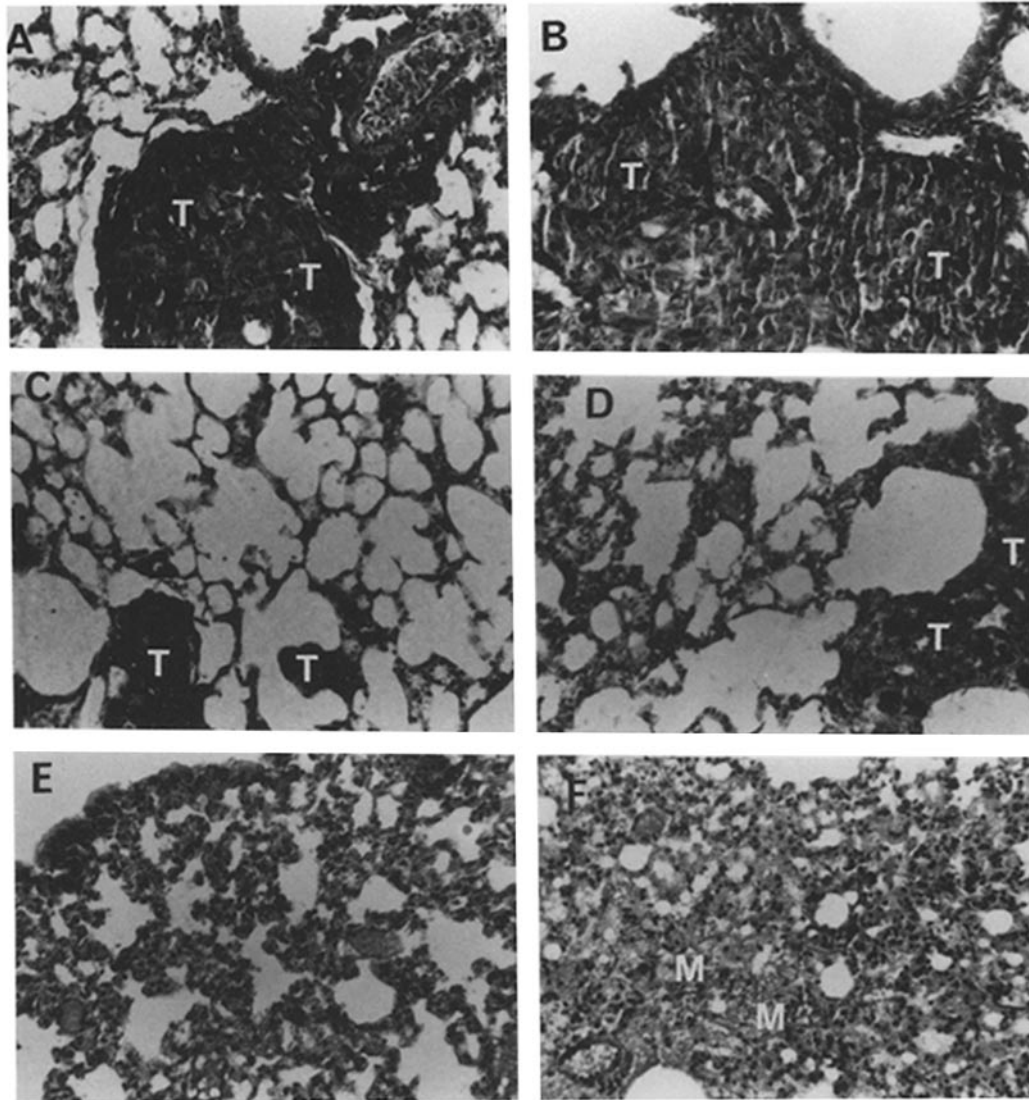


FIGURE 2. Representative photomicrographs ( $\times 160$ ) of H and E-stained sections of paraffin-embedded lungs of (A) mouse killed on day 5 after intravenous inoculation of  $10^6$  cells; (B) control mouse receiving 0.2% ethanol in drinking water from day 0 and excipient buffer (for dissolving IL-2) intraperitoneally on days 10–14; (C) mouse receiving indomethacin alone from day 5; (D) mouse receiving IL-2 alone; (E) mouse receiving indomethacin from day 0 plus IL-2 on days 10–14; (F) mouse receiving indomethacin from day 5 plus IL-2 on days 10–14. *T*, melanoma tumor nodules in A–D. Note variable degrees of interstitial mononuclear cell infiltration in C–F, more marked in D than in C and most marked in E and F. A large area of young granulation tissue represented by mononuclear cell exudate (indicated by *M*), replacing alveoli is shown in F. Such areas are encountered in both groups E and F, although not shown in E. They possibly represent the replacement sites of original melanoma nodules.