

CORRECTION *The Journal of Cell Biology*

Fay et al., Vol. 96, No. 3, March 1983

Page 792, Fig. 9 should have appeared as follows:

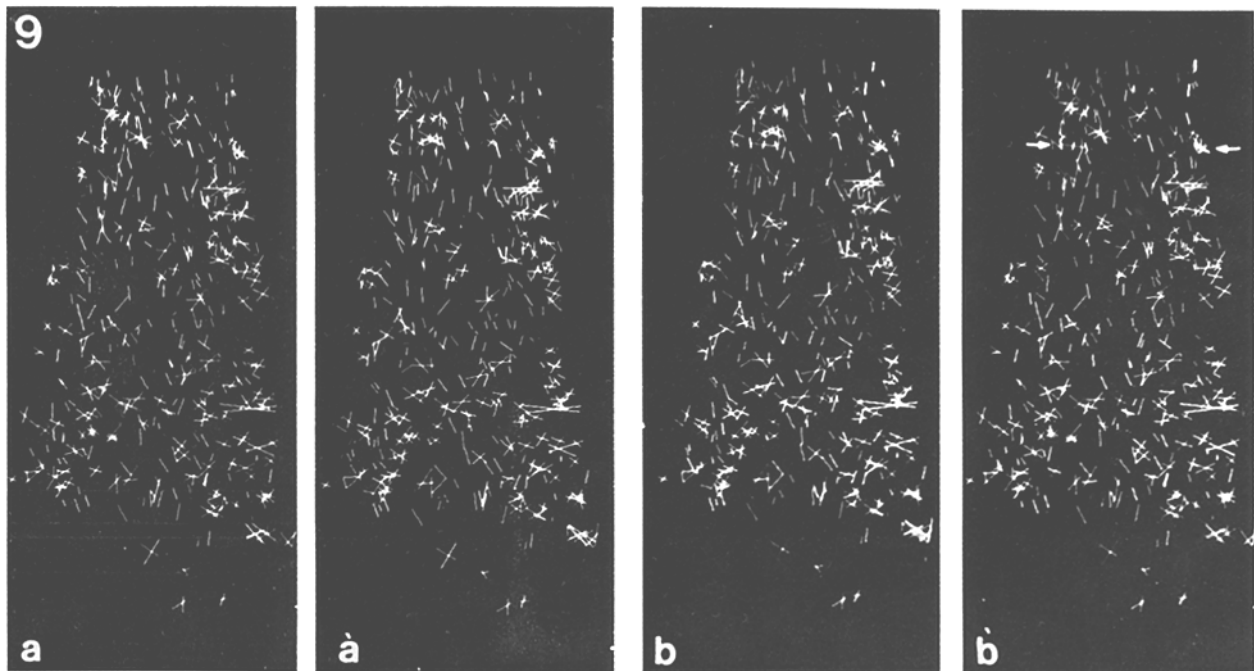


FIGURE 9 Two stereo pairs of a computer reconstruction of the distribution of anti- α -actinin-stained elements within a portion of a smooth muscle cell fixed in the contracted state. (*a* and *a'*) Stereo pair view of the distribution of the stained elements. (*b* and *b'*) Same as the preceding stereo pair in which three of the stained elements that appear to run in a stringlike array into a larger stained plaque along the cell periphery have been intensified relative to the other elements (arrow). Three of the stained elements that are part of a lateral group similar to that in Fig. 6 *c* and *c'* have also been intensified and interconnected (arrow). $\times 2,230$.