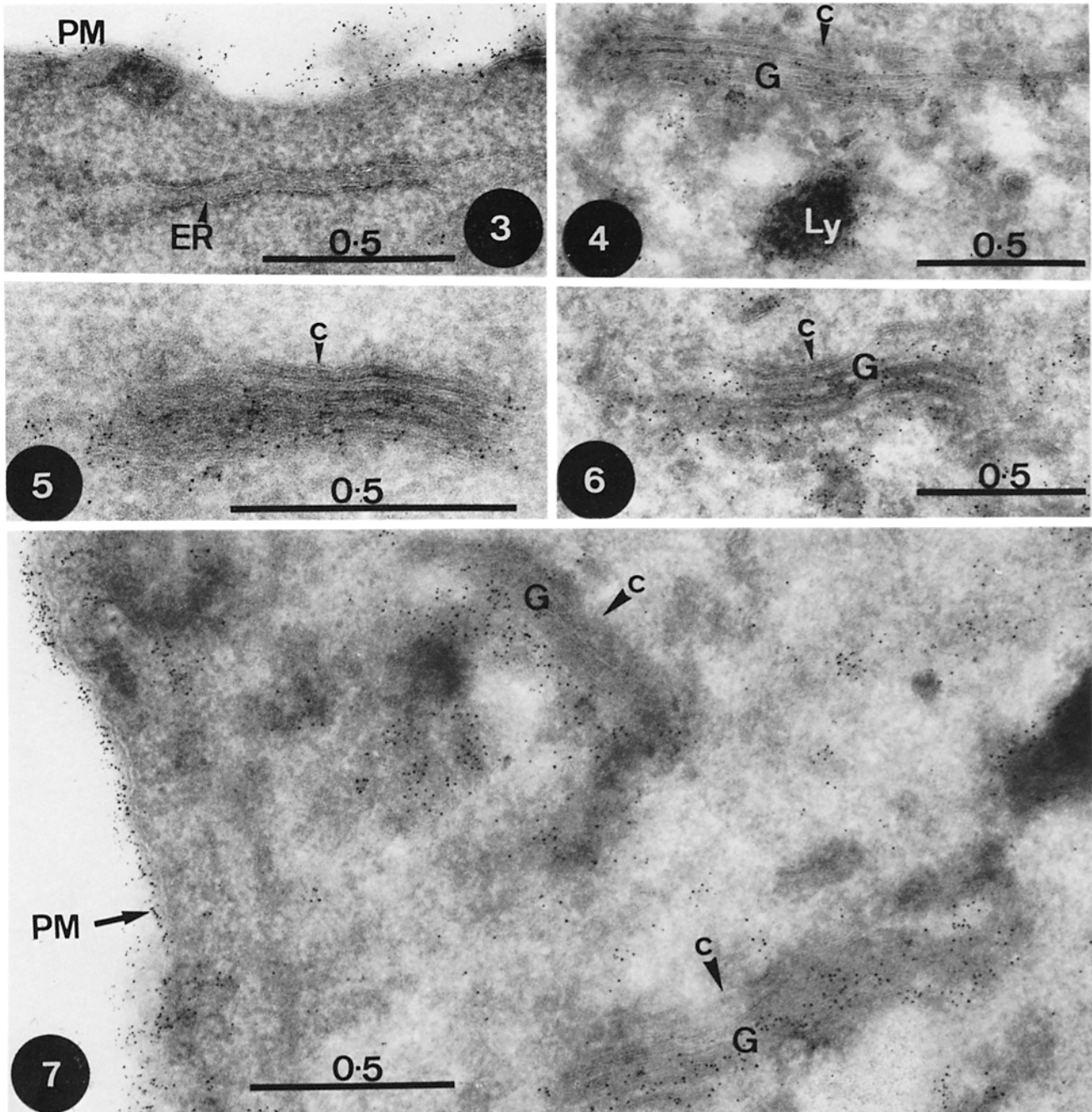


Griffiths et al., Vol. 95, No. 3, December 1982

Page 785, Figs. 3-7 should have appeared as follows:



FIGURES 3-7 BHK cells labeled with RCA. The outside surface of the plasma membrane (PM) was heavily labeled, whereas the rough ER was unlabeled. $\times 60,000$. Figs. 4-7: BHK cells labeled with RCA. In all cases the Golgi stacks were preferentially labeled on one side. The unlabeled side is marked as the *cis* side (c) (see text). In Fig. 4, a secondary lysosome (Ly) near the *trans* side of the Golgi complex was labeled. In Fig. 7, the outer surface of plasma membrane (PM) was heavily labeled. Fig. 4, $\times 55,000$; Fig. 5, $\times 91,000$; Fig. 6, $\times 55,000$; Fig. 7, $\times 64,000$.