

CORRECTION *The Journal of Cell Biology*

---

Wagner, Olmstead, and Marder, Vol. 95, No. 1, October 1982

Page 357, Fig. 4 should appear as follows:

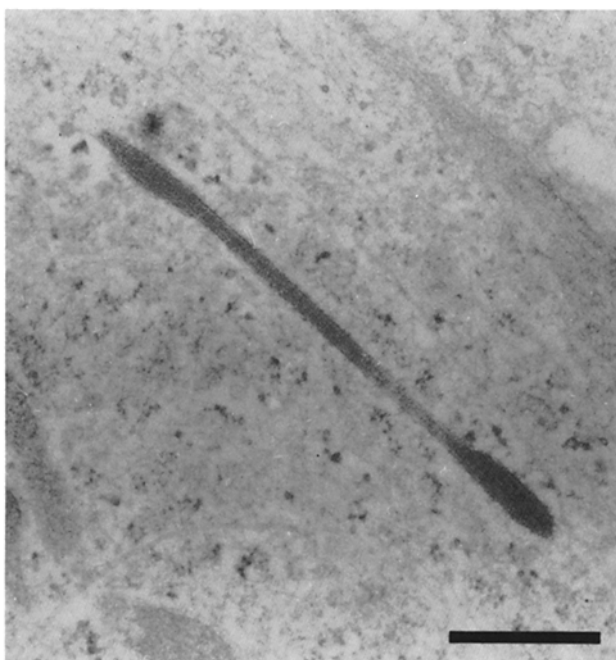


FIGURE 4 Electron micrograph of a Weibel-Palade body. The Weibel-Palade body (2- $\mu$ m length) is aligned parallel to the edge of the cell and shows typical longitudinal striations. Note the mitochondria and microtubule in the lower left corner. Bar, 0.5  $\mu$ m.