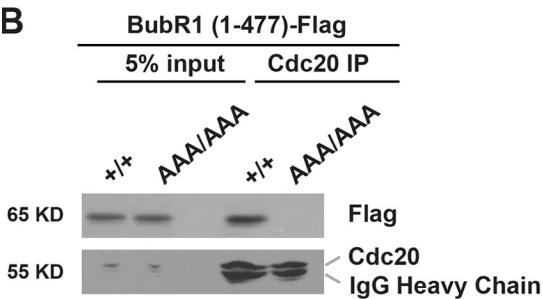


Loss of spindle assembly checkpoint-mediated inhibition of Cdc20 promotes tumorigenesis in mice

Min Li, Xiao Fang, Zhubo Wei, J. Philippe York, and Pumin Zhang

Vol. 185 No. 6, June 15, 2009. Pages 983–994.

Due to an error, two lanes in Fig. 4 B were switched. The correct panel appears below.



(B) The two Cdc20-binding domains of BubR1 interact with AAA-Cdc20 differentially. Flag-tagged BubR1 (1–477) or BubR1 (490–679) was transiently expressed in iMEFs from which Cdc20 was immunoprecipitated. The immune complexes were analyzed with Western blotting. Note that the same mouse monoclonal anti-Cdc20 antibodies were used for immunoprecipitation (IP) and Western blotting.