

Frédéric Relaix, Didier Montarras, Stéphane Zaffran, Barbara Gayraud-Morel, Didier Rocancourt, Shahragim Tajbakhsh, Ahmed Mansouri, Ana Cumano, and Margaret Buckingham

Vol. 172 No. 1, January 2, 2006. Pages 91–102.

In the original paper, an incorrect kiloDalton measurement appeared in the “Pax3” lane of Fig. 1 D’. The corrected image is shown below.

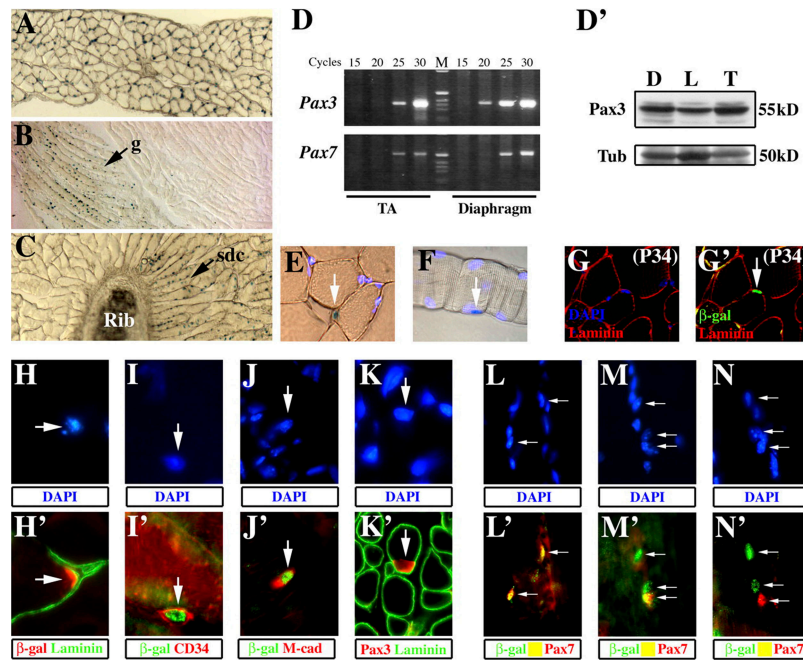


Figure 1. Pax3 expression in muscle satellite cells. (A–C) Expression of Pax3 in different muscles from 3-wk-old *Pax3^{IRESnLacZ/+}* mice, revealed by X-Gal staining. (A) Diaphragm muscle; (B) hindlimb muscles, (g) gracilis muscle; (C) trunk muscles, (sdc) serratus dorsalis caudalis. (D) Semiquantitative RT-PCR of Pax3 and -7 transcripts in adult tibialis anterior (TA) and diaphragm muscle. The number of cycles is indicated on the top of each lane. M, molecular weight markers (see Materials and methods). (D’) Pax3 protein is detected by Western blot in protein extracts from different muscles (D, diaphragm; L, hindlimb; T, ventral trunk muscles) in 3-wk-old mice. Tubulin (Tub) expression is shown as a loading control. (E and F) *Pax3^{IRESnLacZ/+}* is expressed in a subset of diaphragm muscle nuclei (arrows) from 3-wk-old mice, as revealed by X-Gal and DAPI staining of a transverse section (E) or isolated fiber (F). (G and G’) Detection of Pax3/7-dependent β -gal expression in transverse sections of adult diaphragm muscle from the transgenic line *P34*, which reports Pax3/7 transcriptional activity. (G) Immunodetection of laminin (red) and DAPI (blue) staining. (G’) Coimmunodetection of

laminin (red) and β -gal (green). (H–J’) Coimmunodetection of β -gal–positive cells in the diaphragm muscle of 3-wk-old *Pax3^{IRESnLacZ/+}* mice with laminin (H’, green), CD34 (I’, red), or M-cadherin (J’, red). As indicated in the figure, β -gal is shown in red in H’ and in green in I’ and J’. Corresponding DAPI staining is shown (H, I, and J) for each panel. Arrows indicate the labeled satellite cell nuclei. (K) Coimmunodetection of Pax3 (red) and laminin (green, K’). Corresponding DAPI staining is shown, with the labeled nucleus indicated by an arrow (K). (L–N’) Coimmunohistochemistry on diaphragm muscle from 3-wk-old *Pax3^{IRESnLacZ/+}* mice for Pax7 (red) or β -gal (green). (L–N) Corresponding DAPI staining is presented with labeled nuclei indicated by arrows for each panel.

Downloaded from http://jcb.org/jcb/article-pdf/176/1/125/1877669/jcb_20050804420061214c.pdf by guest on 18 April 2024