

Matera et al. Vol. 129, No. 5, June 1995. Pages 1181–1193.

Due to an inking problem, the halftone images (Figs. 3, 4, 6, and 7) which appear in this article were poorly reproduced. The corrected images appear below and on the subsequent pages. The corresponding authors have been provided with corrected reprints and should be contacted directly by anyone wishing to receive a copy.

Address correspondence to Sandra Wolin, Dept. of Cell Biology and Howard Hughes Medical Institute, Yale University School of Medicine, 295 Congress Ave., New Haven, CT 06536-0812. Tel.: (203) 737-4439. Fax: (203) 776-3550. E-mail: sandra_wolin@quickmail.yale.edu; or to Greg Matera, Dept. of Genetics, Case Western Reserve University, 10900 Euclid Ave., Cleveland, OH 44106-4955. Tel.: (216) 368-4922. Fax: (216) 368-3432. E-mail: gxm26@po.cwru.edu.

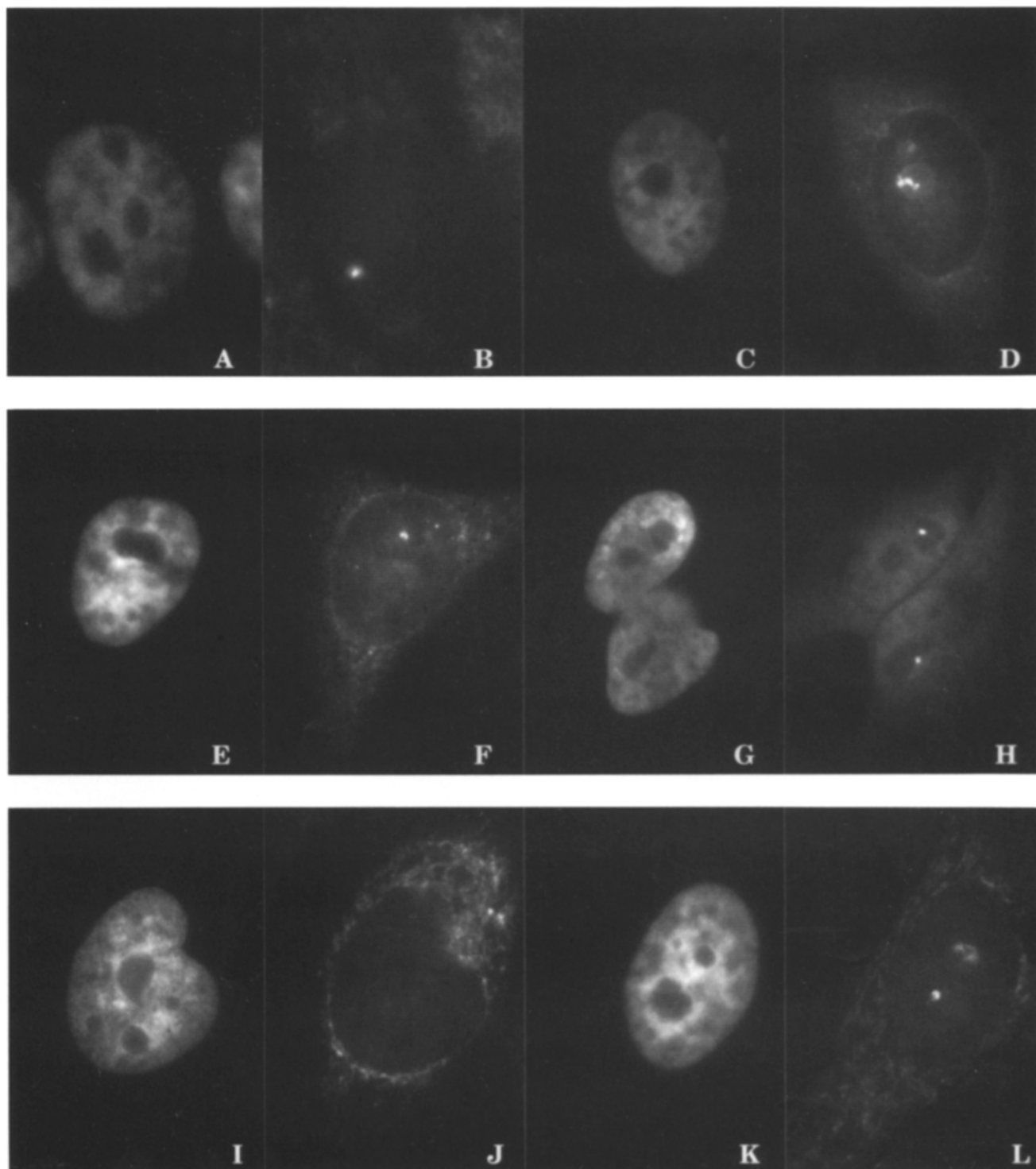


Figure 3.

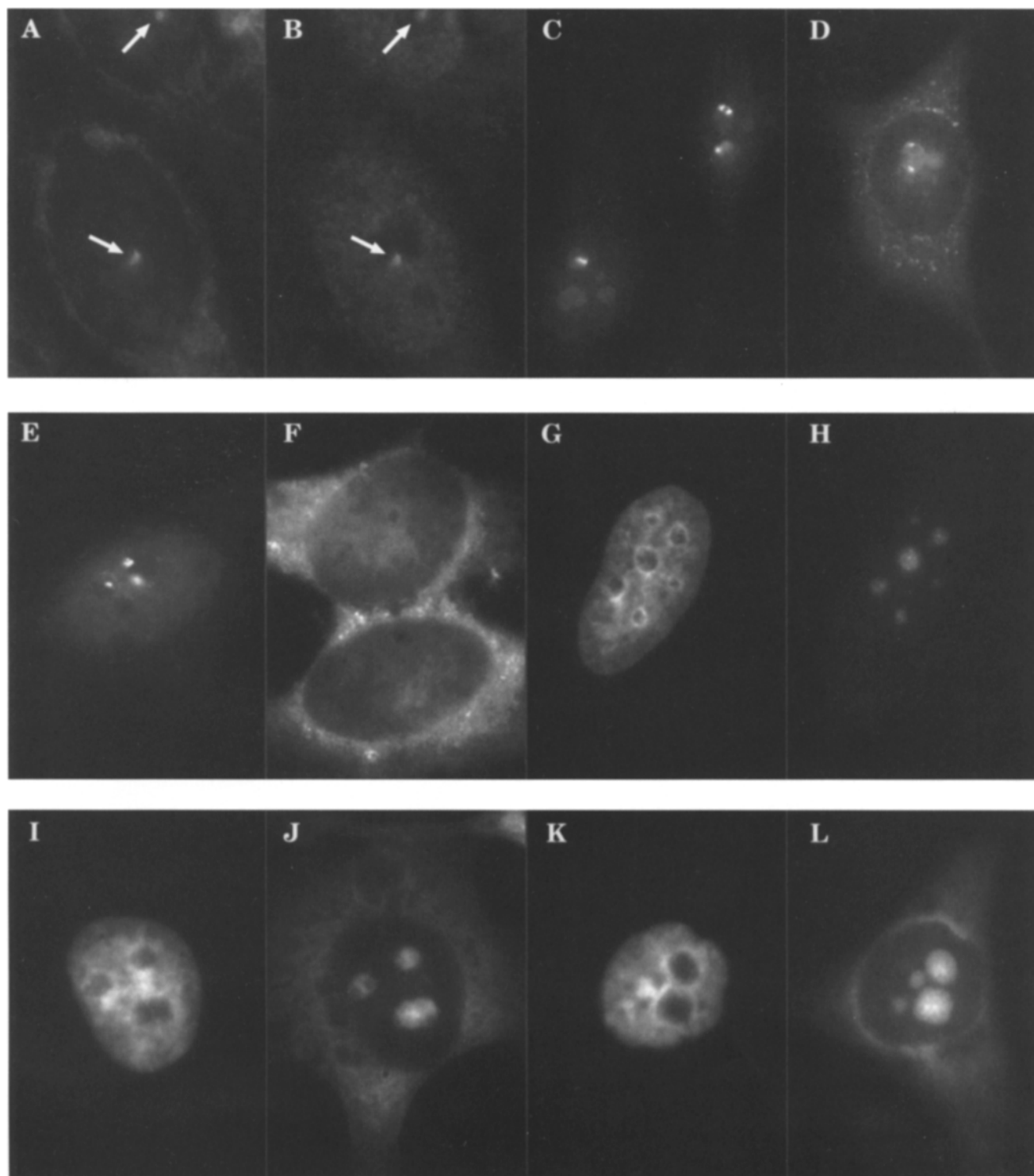


Figure 4.

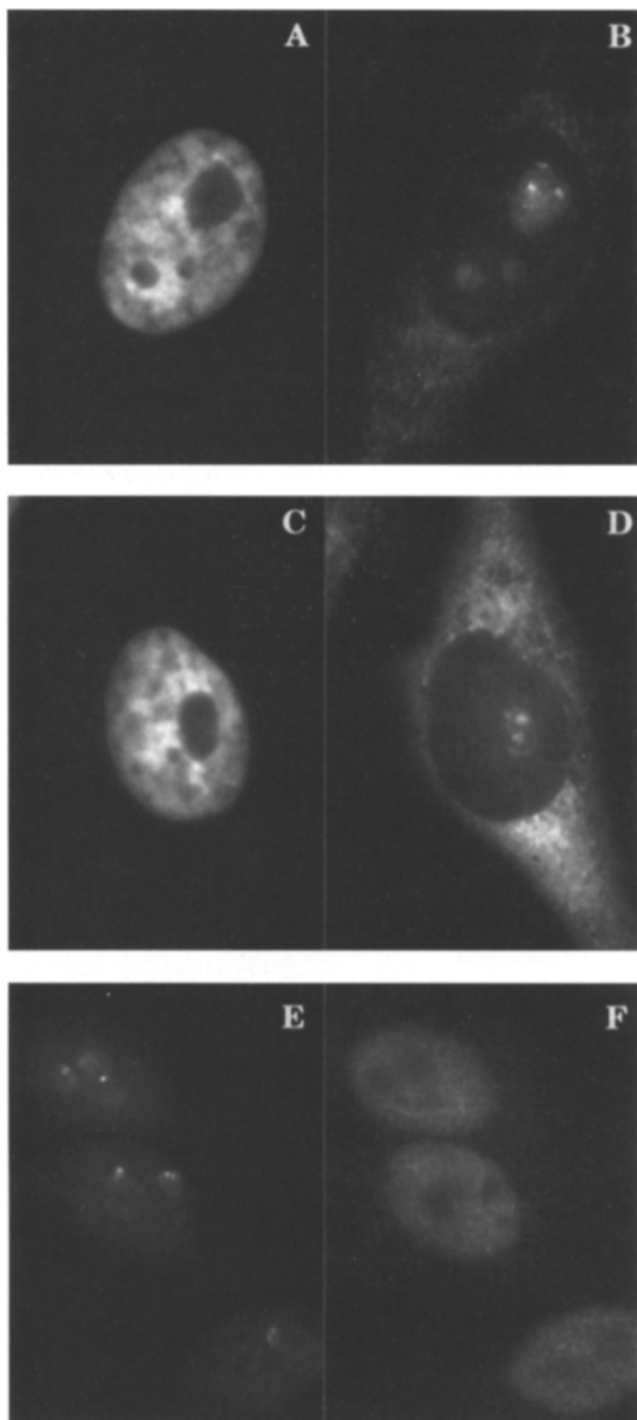


Figure 6.

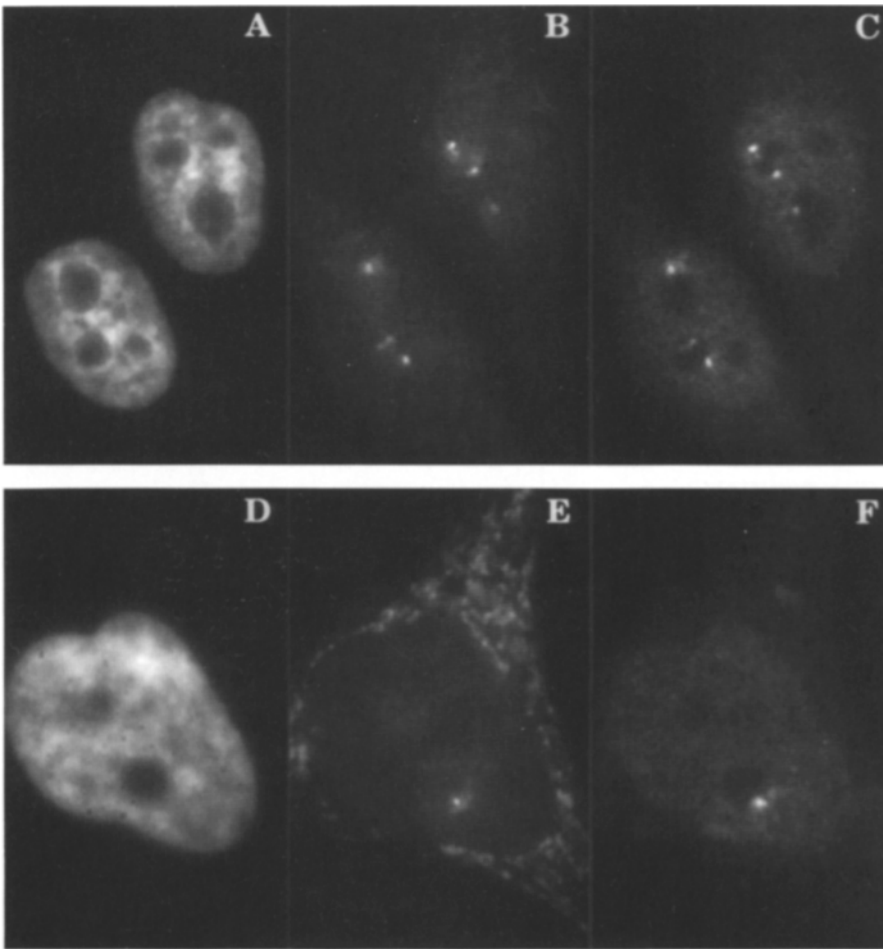


Figure 7.