

Lu and Kerbel, Vol. 120, No. 5, 1281–1288. Due to an author's error, Northern blotting of gp 130 in Fig. 2 was misplaced. The correct Fig. 2 appears below.

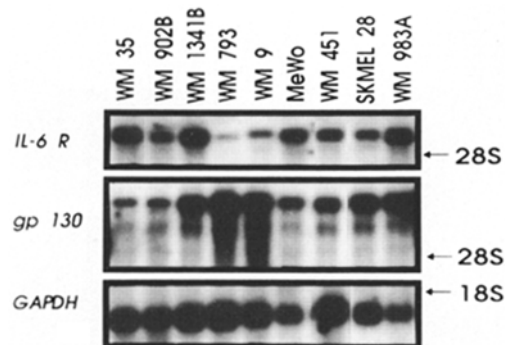


Figure 2. Northern blot analysis of IL-6 receptor and gp130 gene expression in human melanoma cell lines. 3 μ g of poly(A)⁺ RNA from each cell line was loaded into each lane before electrophoresis. cDNA probes for IL-6 receptor, gp130 and GAPDH used were as described in Materials and Methods.