

Vol. 109, No. 2, August 1989

Due to an author error, the legend to Fig. 6 in Sugrue et al. was incorrect. The correct figure appears below:

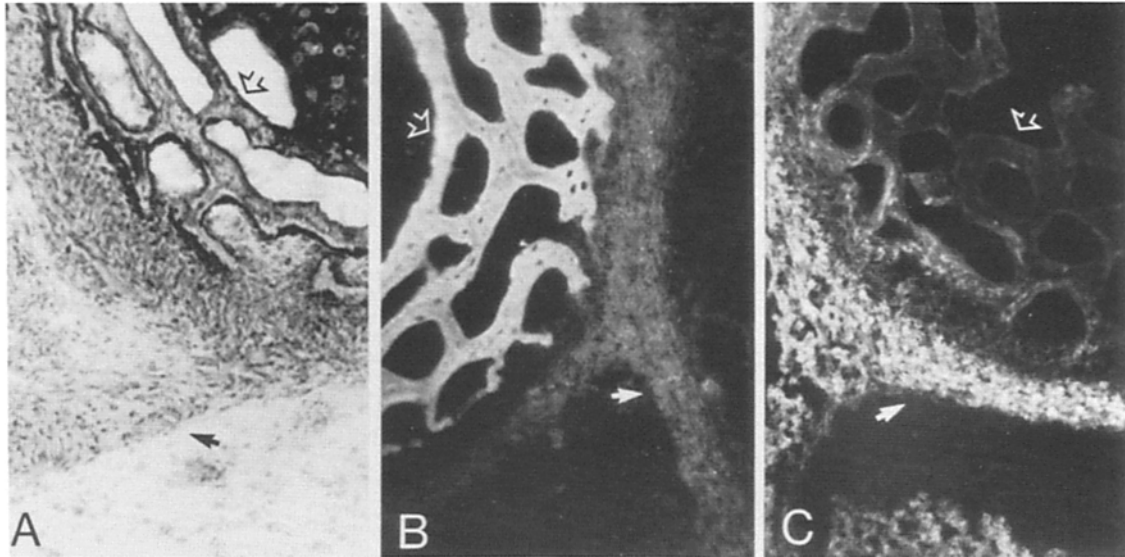


Figure 6. Cryostat section through a long bone (phalange) of a 19-d-old chick embryo stained with the monoclonal antibody against type I collagen (*B*) and type XII collagen (*C*). Note the positive staining of tendon and periosteum (*solid arrows*). Note that the bone matrix (the inner surface indicated by large open arrows) is positive for type I but negative for type XII. Toluidine blue stained section (*A*).