

# A Signal Sequence Domain Essential for Processing, but Not Import, of Mitochondrial Pre-Ornithine Carbamyl Transferase

Mai Nguyen,\* Carole Argan,\* William P. Sheffield,\* Alexander W. Bell,‡  
Dennis Shields,§ and Gordon C. Shore\*

\* Department of Biochemistry, McIntyre Medical Sciences Building, McGill University, Montreal, Canada H3G 1Y6;

‡ Biotechnology Research Institute of the National Research Council of Canada, Montreal, Canada H3A 1A1;

§ Departments of Anatomy, and Developmental Biology and Cancer, Albert Einstein College of Medicine, Bronx, New York 10461

**Abstract.** Studies using deletion mutagenesis indicate that a processing recognition site lies proximal to the normal cleavage position between gln<sup>32</sup> and ser<sup>33</sup> of pre-ornithine carbamyl transferase (pOCT). pOCT cDNA was manipulated to delete codons specifying amino acids 22–30 of the signal sequence. The mutant precursor, designated pOCT $\Delta$ 22–30, was imported to the matrix compartment by purified mitochondria, but remained largely unprocessed; the low level of processing that was observed did not involve the normal cleavage site. Several manipulations performed down-

stream of the normal pOCT processing site (deletion, substitution, and hybrid protein constructions) affected neither import nor correct processing.

Our data suggest (a) that domains specifying import and processing site recognition may be functionally segregated within the signal peptide; (b) that processing is not requisite for import of pOCT; and (c) that a proximal region, not involving the normal signal peptide cleavage site, is required for processing site recognition.

**S**TUDIES using hybrid proteins (5, 12–14, 25) and synthetic signal peptides (9) have recently established that information for targeting and subsequent translocation of nuclear-coded precursor proteins into mitochondria resides exclusively within their amino-terminal leader sequence; though not yet proven, recognition of such targeting sequences by mitochondria is presumably mediated by an import receptor located on the surface of the organelle. After translocation into mitochondria, the transient leader (or signal) peptide is cleaved from the precursor molecule by a specific metalloprotease (mitochondrial signal peptidase) located within the matrix compartment (3, 4, 19, 22). A large number of mitochondrial signal peptides have now been sequenced and although little homology exists between them, they all share certain similarities, including a high net positive charge and an overall composition of predominantly polar residues interspersed with short stretches of 1–3 hydrophobic amino acids. Such characteristics confer amphiphilic properties to mitochondrial signal sequences (6, 27), but how this relates to the import process is not yet known.

With respect to correct processing of signal sequences, the specificity requirements for mitochondrial signal peptidase have yet to be elucidated; in particular, there appears to be little or no consensus for a preferred amino acid composition at the cleavage site. Recently, however, Horwich et al. (11) identified a midportion of the pre-ornithine carbamyl transferase (pOCT)<sup>1</sup> signal sequence as essential both for import

of the precursor protein into mitochondria and for removal of its signal peptide, and Hurt et al. (13) have demonstrated that an amino-terminal fragment of a signal peptide (lacking the normal cleavage site) directs import of a hybrid protein without concomitant processing. In the present communication, we show that amino acids 22–30 of pOCT contribute to a critical processing recognition site, and we further demonstrate that despite the deletion of this site from pOCT, the precursor molecule is imported and accumulates within mitochondria. Manipulations that remove basic residues and helix breakers immediately downstream of the pOCT cleavage site affected neither import nor processing of the precursor.

## Materials and Methods

### General

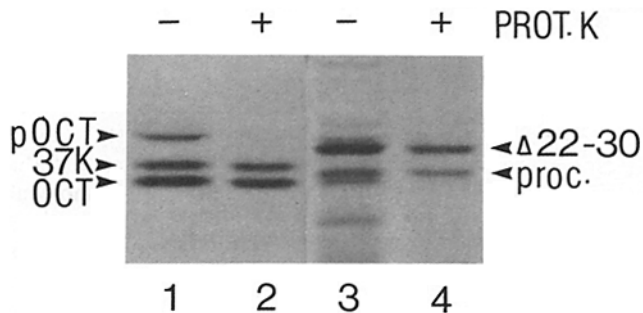
Earlier studies describe the methods used for recombinant pSP64 transcription and subsequent translation in a rabbit reticulocyte lysate in the presence of [<sup>35</sup>S]methionine, isolation and purification of mitochondria from rat heart or liver, and analysis of total import products by SDS PAGE and fluorography (reference 25 and references cited therein). Further details are provided in the figure legends.

### Mitochondrial Import Assay

After translation of recombinant pSP64 transcripts in a messenger-dependent rabbit reticulocyte lysate system for 20 min, an aliquot (46  $\mu$ l) was removed, mixed with 4  $\mu$ l of heart mitochondria (25  $\mu$ g protein) suspended in 10 mM Hepes, pH 7.4, 0.25 M sucrose, 10 mM succinate, 2.5 mM K<sub>2</sub>HPO<sub>4</sub>, 0.15 mM ADP, and the incubation continued at 30°C for 60

1. *Abbreviation used in this paper:* pOCT, pre-ornithine carbamyl transferase.





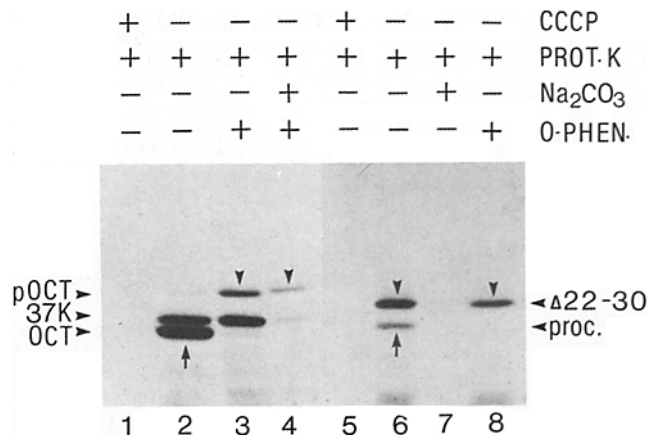
**Figure 3.** Import of pOCT and pOCT $\Delta$ 22-30 by heart mitochondria in vitro. pSPO19 and pSPOd2 encoding native pOCT and pOCT $\Delta$ 22-30, respectively, were linearized with Eco RI and transcribed to yield capped mRNA as described in reference 25. After translation in a rabbit reticulocyte lysate, import was performed as described in Materials and Methods, at which time import mixtures were placed on ice and treated with or without proteinase K (200  $\mu$ g/ml) ( $\pm$ PROT. K) for 30 min at 4°C. After addition of phenylmethylsulfonyl fluoride (2 mM final), mitochondria were isolated by centrifugation at 12,000 g for 5 min, briefly rinsed, and dissolved in SDS sample buffer and loaded directly onto gels for analysis by SDS PAGE and fluorography. The positions of pOCT, processed ornithine carbamyl transferase (OCT), pOCT $\Delta$ 22-30, and processed  $\Delta$ 22-30 (*proc.*) are indicated. 37K denotes a 37-kD proteolytic fragment of pOCT (see text). Lane 1, pSPO19 translation products without protease digestion; lane 2, as in lane 1 but with proteinase K digestion; lane 3, pSPOd2 translation products without protease digestion; lane 4, as in lane 3 but with proteinase K digestion.

was consistent with the expected size differential resulting from removal of nine amino acids from pOCT (Fig. 3).

#### pOCT $\Delta$ 22-30 Accumulates in Mitochondria

Results of import of pOCT and pOCT $\Delta$ 22-30 in vitro are presented in Fig. 3; the primary translation products corresponding to the two precursors were derived by transcription-translation of their respective plasmids. As expected, pOCT (40 kD) was imported and processed to mature form (36 kD) by heart mitochondria in vitro. A 37-kD proteolytic fragment of pOCT was also recovered inside mitochondria, but its appearance is variable (2, 15, 21), it is not present in the input translation (see Fig. 6, lane 1), it is not observed in some downstream mutants (see Fig. 6, lane 4) or the human homologue of pOCT (11), and may result from nonspecific events (2). The 36-kD polypeptide represents bona fide processed product, as determined by sequence analysis of its amino terminus (Fig. 7 A).

After treatment of postimport mixtures with proteinase K, all residual pOCT was degraded whereas processed OCT remained unaffected (Fig. 3). The results are consistent with repeated observations that a measurable pool of unprocessed pOCT does not exist inside mitochondria; rather, once pOCT is imported, it is immediately processed to mature product. A very different observation, however, was made for pOCT $\Delta$ 22-30. After import, pOCT $\Delta$ 22-30 remained largely unprocessed and was largely resistant to external protease (Figs. 3 and 4). Relatively minor levels of a processed  $\Delta$ 22-30 product appeared during these import assays, but it did not co-migrate with mature OCT which, as demonstrated in Figs. 1 and 2, would have been the case had pOCT $\Delta$ 22-30 been processed between gln<sup>32</sup> and ser<sup>33</sup>. The amount of



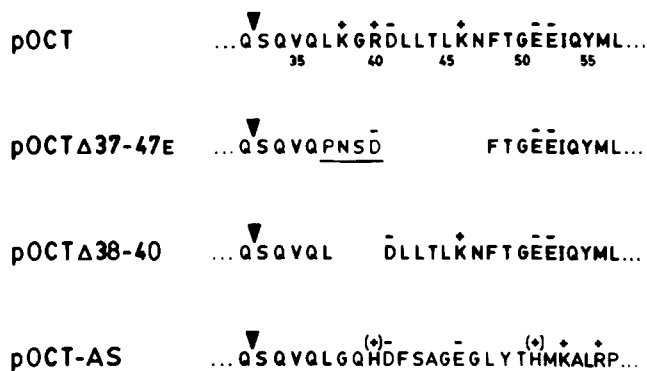
**Figure 4.** Fate of imported pOCT $\Delta$ 22-30. Import of pOCT (lanes 1-4) and pOCT $\Delta$ 22-30 (lanes 5-8) was performed as described in Fig. 3, in the presence or absence of 5 mM EDTA and 0.1 mM *O*-phenanthroline ( $\pm$ O-PHEN), or 1.0  $\mu$ M carbonyl cyanide *m*-chlorophenyl hydrazone ( $\pm$ CCCP). After import, incubation mixtures were treated with or without proteinase K as described in Fig. 3 ( $\pm$ PROT. K), and mitochondria were isolated by centrifugation. Mitochondria were either dissolved directly for analysis by SDS PAGE ( $-$ Na<sub>2</sub>CO<sub>3</sub>) or they were suspended in 150  $\mu$ l 0.1 M Na<sub>2</sub>CO<sub>3</sub>, pH 11.5 (0.2  $\mu$ g protein/ $\mu$ l), sonicated, incubated on ice for 30 min, and membranes recovered by centrifugation for 10 min in an airfuge operating at 130,000 g ( $+$ Na<sub>2</sub>CO<sub>3</sub>). Arrows indicate processed products; arrowheads indicate precursors. Abbreviations are as in Fig. 3.

processed  $\Delta$ 22-30 varied from experiment to experiment, but usually accounted for 10-30% of imported (protease-resistant) material. That such processing, albeit inefficient, resulted from the action of the normal matrix-processing enzyme, however, is suggested by the fact that *O*-phenanthroline, a chelator which inhibits the Zn<sup>++</sup>-dependent mitochondrial signal peptidase of rat liver (4), also inhibited pOCT $\Delta$ 22-30 processing (Fig. 4). This finding further shows that processed  $\Delta$ 22-30 is not simply the mutant equivalent to the 37-kD proteolytic fragment of pOCT, because appearance of the latter is not sensitive to *O*-phenanthroline (Fig. 4, lanes 2 and 3). The same results were obtained using mitochondrial matrix extracts in place of the intact mitochondria used for Fig. 4; chelation of Zn<sup>++</sup> by either *O*-phenanthroline or EDTA prevented processing (not shown).

Several attempts were made to sequence processed pOCT $\Delta$ 22-30 labeled with [<sup>3</sup>H]leucine (containing up to 300,000 cpm) but, in striking contrast to correctly processed pOCT (see Fig. 7), only background radioactivity was recovered, strongly suggesting that processed  $\Delta$ 22-30 had a blocked NH<sub>2</sub>-terminus (data not shown). This fact, together with the finding that processed pOCT $\Delta$ 22-30 did not co-migrate with processed pOCT (Fig. 3 and 4), suggests that processing of pOCT $\Delta$ 22-30 must have occurred at a site other than between gln<sup>32</sup> and ser<sup>33</sup>, although in the absence of sequencing data, such a conclusion cannot be made with certainty.

#### Location of Imported pOCT $\Delta$ 22-30

Figs. 3 and 4 demonstrate that a protease-resistant pool of pOCT $\Delta$ 22-30 accumulated within mitochondria after im-



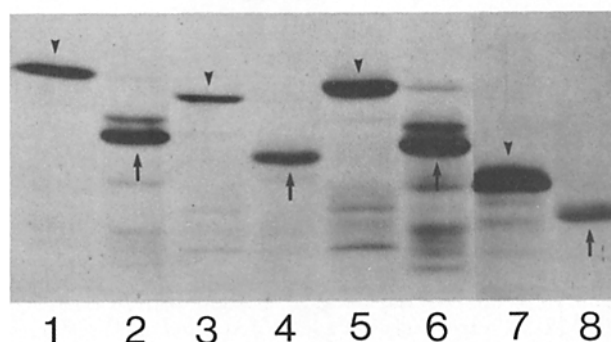
**Figure 5.** Derived amino acid sequences of plasmids encoding pOCT, pOCT $\Delta$ 37-47E, pOCT $\Delta$ 38-40, and pOCT-AS. pSP64 plasmids were constructed to encode the four polypeptides as follows: pOCT, see reference 25 and Fig. 2; pOCT $\Delta$ 37-47E, the Pvu II-XmnI fragment shown in Fig. 2 was deleted and replaced with a single copy of an Eco RI linker; pOCT $\Delta$ 38-40, oligonucleotide-directed loop-out deletion was performed after subcloning in M13, using the oligonucleotide GGTGAGGAGGTCAGCTGTACTTG, by the technique of Zoller and Smith (31); pOCT-AS, reference 25 describes construction of the plasmid, pSPOA5, encoding a hybrid protein consisting of the first 36 amino acids of pOCT followed by the COOH-terminal 250 amino acids of the cytosolic enzyme of *Escherichia coli*, asparagine synthetase (AS). The one-letter amino acid code is shown for the region downstream of the normal processing site of pOCT, between gln<sup>32</sup> and ser<sup>33</sup>. Deletions are represented by spaces and substitutions by underlined sequences. The predicted plasmid constructs and their corresponding polypeptide products were confirmed both by DNA sequencing and by amino acid sequencing of [<sup>3</sup>H]leu-labeled processed polypeptide (Fig. 7). The arrowheads denote the processing site as determined in each case in Fig. 7.

port in vitro. Resistance to external protease was also observed after treatments (e.g., digitonin) that selectively rupture the outer membrane (10, 23) (not shown). However, when import was performed in the presence of carbonyl cyanide *m*-chlorophenyl hydrazone, an uncoupler which collapses the electrochemical potential across the mitochondrial inner membrane, pOCT $\Delta$ 22-30 was entirely degraded by proteinase K (Fig. 4, lane 5), suggesting that pOCT $\Delta$ 22-30 is otherwise imported either into or across the inner membrane. Newly imported pOCT $\Delta$ 22-30 was extractable with 0.1 M Na<sub>2</sub>CO<sub>3</sub>, pH 11.5 (Fig. 4, lane 7), a procedure which releases mitochondrial content and membrane-peripheral proteins and converts the organelle to open membrane sheets (8); in this regard, the properties of pOCT $\Delta$ 22-30 were similar to those of pOCT whose processing had been blocked by *O*-phenanthroline (Fig. 4, lanes 3 and 4). Taken together, therefore, the results suggest that pOCT $\Delta$ 22-30 is translocated to the matrix compartment, although it cannot be ruled out that it retains a pH-sensitive association with the matrix aspect of the inner membrane.

#### Effects of Downstream Sequence Alterations on pOCT Import and Processing

Fig. 5 describes manipulations to pOCT cDNA that remove or substitute codons specifying basic residues and/or helix breakers (gly, pro) in the region immediately downstream of the normal pOCT processing site. Such alterations were chosen because basic residues and helix breakers are a feature

pOCT  $\Delta$ 37-47E  $\Delta$ 38-40 pOCT-AS

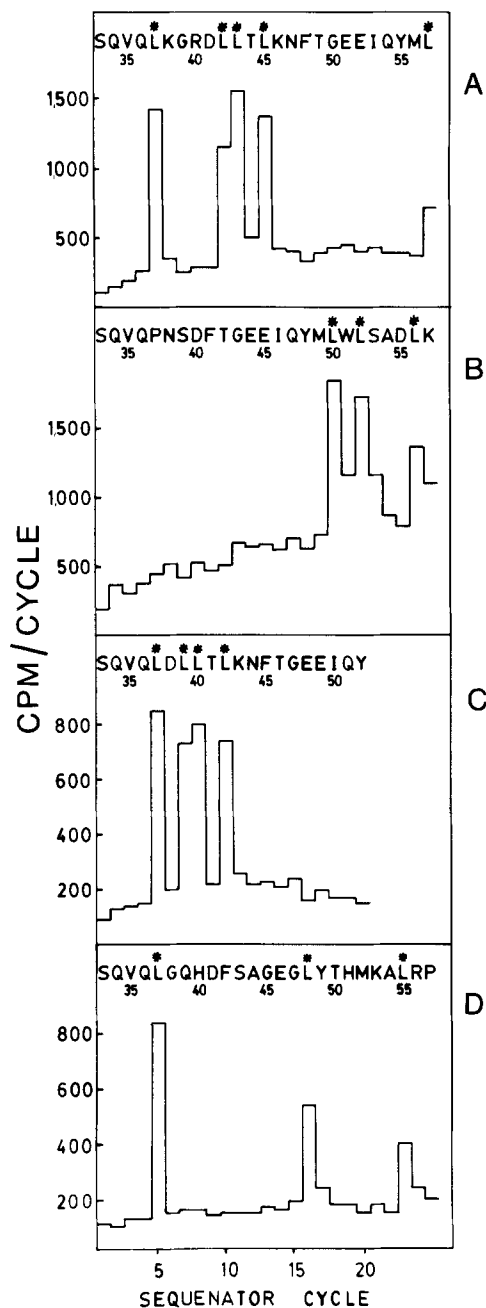


**Figure 6.** In vitro import and processing of pOCT, pOCT $\Delta$ 37-47E, pOCT $\Delta$ 38-40, and pOCT-AS. Transcription-translation of the pSP64 derived plasmids was performed as described in Materials and Methods and in Fig. 3; products were analyzed by SDS PAGE and fluorography either directly after translation (lanes 1, 3, 5, and 7) or after incubation with mitochondria and subsequent proteinase K treatment (lanes 2, 4, 6, and 8). Arrowheads indicate precursors; arrows indicate processed products.

of this region in a number of matrix precursor proteins. The mutants, pOCT $\Delta$ 37-47E and pOCT $\Delta$ 38-40, and the hybrid protein, pOCT-AS, were all capable of being imported and processed by purified mitochondria in vitro (Fig. 6). Radiosequencing of the processed products (Fig. 7) showed that in all cases processing took place in the correct position between gln<sup>32</sup> and ser<sup>33</sup>.

#### Conclusions

We have demonstrated that deletion of about one-third of the pOCT signal sequence just proximal to the precursor processing site, while having no obvious effect on pOCT import, resulted in a product that accumulated within mitochondria where it was inefficiently and incorrectly processed. The results from mutagenesis, therefore, are consistent with findings in *Neurospora* (32) and yeast (30) that transmembrane import of matrix proteins is not obligately linked to precursor processing, although it should be emphasized that processing may affect the rate of such import (references 16 and 29). Moreover, our results suggest that distinct functional domains may exist within the pOCT signal sequence, conferring import capabilities on the one hand and processing recognition on the other. An examination of various mitochondrial signal sequences reveals that helix breakers (gly, pro) and basic residues (lys, arg) are often represented in the region preceding the cleavage site; recent studies of human pOCT, however, indicate that positive charges in positions 23 and 26 are not required (11). Residues 22-30, however, may very well contribute to a specific conformation within the signal sequence that specifies recognition by the mitochondrial processing enzyme. It may also serve to position pOCT and help orient the gln<sup>32</sup>-ser<sup>33</sup> peptide bond toward the metal cofactor (Zn<sup>2+</sup>) and catalytic residue within the peptidase's active site. Such positioning may be critical for selecting which peptide bond is cleaved, and could explain how specificity is achieved for precursors exhibiting diverse amino acid compositions at their cleavage site. Moreover, alterations to the conformation of the processing recog-



**Figure 7.** Radiosequencing of [ $^3\text{H}$ ]leu-labeled products after import and processing of pOCT, pOCT $\Delta$ 37-47E, pOCT $\Delta$ 38-40, and pOCT-AS. After import into mitochondria and digestion with proteinase K (Fig. 6), processed products of pOCT, pOCT $\Delta$ 37-47E, and pOCT $\Delta$ 38-40 were purified by an immunoaffinity binding procedure, exactly as described in reference 2; pOCT-AS processed product was purified by electroelution from gel slices after SDS PAGE, as described (7). In each case, purified processed product showed a single radioactive species after re-analysis by SDS PAGE and fluorography. Sequence positioning of [ $^3\text{H}$ ]leu was performed as described in Materials and Methods. The positions of leucine residues in each sequence is denoted by an asterisk; correspondence between the positions of leucine and peaks of radioactivity at a sequencing cycle were used to position the site of processing for each precursor (shown in Fig. 5). (A) pOCT; (B) pOCT $\Delta$ 37-47E; (C) pOCT $\Delta$ 38-40; (D) pOCT-AS.

nition site within the signal sequence may in some cases lead to the wrong peptide bond being positioned in the catalytic site, and thereby explain how incorrect processing might arise.

It is a pleasure to thank H el ene Gagn e for excellent technical assistance, and Drs. Robert MacKenzie and Laura Gillespie for discussions.

Financial support was provided by operating grants from the Medical Research Council of Canada, the National Cancer Institute of Canada, and the National Institutes of Health. M. Nguyen and W. P. Sheffield were recipients of a studentship from Fonds de la Recherche en Sant e du Qu ebec. C. Argan was the recipient of a studentship from the Medical Research Council of Canada.

Received for publication 31 October 1986, and in revised form 9 January 1987.

#### References

- Argan, C., and G. C. Shore. 1985. The precursor to ornithine carbamyl transferase is transported to mitochondria as a 5S complex containing an import factor. *Biochem. Biophys. Res. Commun.* 131:289-298.
- Argan, C., C. J. Lusty, and G. C. Shore. 1983. Membrane and cytosolic components affecting transport of the precursor for ornithine carbamyl transferase into mitochondria. *J. Biol. Chem.* 258:6667-6670.
- B ohni, P., G. Daum, and G. Schatz. 1980. Import of proteins into mitochondria: partial purification of a matrix-localized protease involved in cleavage of mitochondrial precursor polypeptides. *J. Biol. Chem.* 258:4937-4943.
- Conboy, J. G., W. A. Fenton, and L. E. Rosenberg. 1982. Processing of pre-ornithine transcarbamylase requires a zinc-dependent protease localized to the mitochondrial matrix. *Biochem. Biophys. Res. Commun.* 105:1-7.
- Emr, S. D., A. Vassarotti, J. Garrett, B. L. Geller, M. Takeda, and M. G. Douglas. 1986. The amino terminus of the yeast  $F_1$ -ATPase  $\beta$ -subunit precursor functions as a mitochondrial import signal. *J. Cell Biol.* 102:523-533.
- Epand, R. M., S-W. Hui, C. Argan, L. L. Gillespie, and G. C. Shore. 1986. Structural analysis and amphiphilic properties of a mitochondrial signal peptide. *J. Biol. Chem.* 261:10017-10020.
- Eskridge, E. M., and D. Shields. 1986. The  $\text{NH}_2$ -terminus of preproinsulin directs the translocation and glycosylation of a bacterial cytoplasmic protein by mammalian microsomal membranes. *J. Cell Biol.* 103:2263-2272.
- Fujiki, Y., S. Fowler, H. Shio, A. L. Hubbard, and P. B. Lazarow. 1982. Polypeptide and phospholipid composition of the membrane of rat liver peroxisomes: comparison with endoplasmic reticulum and mitochondrial membrane. *J. Cell Biol.* 93:103-110.
- Gillespie, L. L., C. Argan, A. K. Taneja, R. S. Hodges, K. B. Freeman, and G. C. Shore. 1985. A synthetic signal peptide blocks import of precursor proteins destined for the mitochondrial inner membrane or matrix. *J. Biol. Chem.* 260:16045-16048.
- Greenawalt, J. W. 1974. The isolation of outer and inner mitochondrial membranes. *Methods Enzymol.* 31:310-323.
- Horwich, A. L., F. Kalousek, W. A. Fenton, R. A. Pollock, and L. E. Rosenberg. 1986. Targeting of pre-ornithine transcarbamylase to mitochondria: definition of critical regions and residues in the leader peptide. *Cell.* 44:451-459.
- Horwich, A. L., F. Kalousek, I. Mellman, and L. E. Rosenberg. 1985. A leader peptide is sufficient to direct mitochondrial import of a chimeric protein. *EMBO (Eur. Mol. Biol. Organ.) J.* 4:1129-1135.
- Hurt, E. C., U. M uller, and G. Schatz. 1985. The first twelve amino acids of a yeast mitochondrial outer membrane protein can direct a nuclear-encoded cytochrome oxidase subunit to the mitochondrial inner membrane. *EMBO (Eur. Mol. Biol. Organ.) J.* 4:2061-2068.
- Hurt, E. C., B. Pesold-Hurt, and G. Schatz. 1984. The amino-terminal region of an imported mitochondrial precursor polypeptide can direct cytoplasmic dihydrofolate reductase into the mitochondrial matrix. *EMBO (Eur. Mol. Biol. Organ.) J.* 3:3149-3156.
- Kolansky, D. M., J. G. Conboy, W. A. Fenton, and L. E. Rosenberg. 1982. Energy-dependent translocation of the precursor of ornithine transcarbamylase by isolated rat liver mitochondria. *J. Biol. Chem.* 257:8467-8471.
- Kolarov, J., and I. Hatalova. 1984. Coupling between proteolytic processing and translocation of the precursor of the  $F_1$ -ATPase  $\beta$ -subunit during its import into mitochondria of intact cells. *FEBS (Fed. Eur. Biochem. Soc.) Lett.* 178:161-164.
- Kraus, J. P., P. E. Hodges, C. L. Williamson, A. L. Horwich, F. Kalousek, K. R. Williams, and L. E. Rosenberg. 1985. A cDNA clone for the precursor of rat mitochondrial ornithine transcarbamylase: comparison of rat and human leader sequences and conservation of catalytic sites. *Nucleic Acids Res.* 13:943-952.

18. Lusty, C. J., R. L. Jilka, and E. H. Nietsch. 1979. Ornithine transcarbamylase of rat liver. Kinetic, physical, and chemical properties. *J. Biol. Chem.* 254:10030-10036.
19. McAda, P., and M. G. Douglas. 1982. A neutral metalloendoprotease involved in the processing of an F<sub>1</sub>-ATPase subunit precursor in mitochondria. *J. Biol. Chem.* 257:3177-3182.
20. McIntyre, P., L. Graf, J. Mercer, G. Peterson, P. Hudson, and N. Hoogenraad. 1984. A highly basic N-terminal extension of the mitochondrial matrix enzyme ornithine transcarbamylase from rat liver. *FEBS (Fed. Eur. Biochem. Soc.) Lett.* 177:41-66.
21. Miura, S., Y. Amaya, and M. Mori. 1986. A metalloprotease involved in the processing of mitochondrial precursor proteins. *Biochem. Biophys. Res. Commun.* 143:1151-1159.
22. Miura, S., M. Mori, Y. Amaya, and M. Tatibana. 1982. A mitochondrial protease that cleaves the precursor of ornithine carbamoyltransferase. Purification and properties. *Eur. J. Biochem.* 122:641-647.
23. Mori, M., T. Morita, S. Miura, and M. Tatibana. 1981. Uptake and processing of the precursor for rat liver ornithine transcarbamylase by isolated mitochondria. Inhibition by uncouplers. *J. Biol. Chem.* 256:8263-8266.
24. Mueckler, M. M., and H. C. Pitot. 1985. Sequence of the precursor to rat ornithine aminotransferase deduced from a cDNA clone. *J. Biol. Chem.* 260:12993-12997.
25. Nguyen, M., C. Argan, C. J. Lusty, and G. C. Shore. 1986. Import and processing of hybrid proteins by mammalian mitochondria in vitro. *J. Biol. Chem.* 261:800-805.
26. Nyunoya, H., K. E. Broglie, E. E. Widgren, and C. J. Lusty. 1985. Characterization and derivation of the gene coding for mitochondrial carbamyl phosphate synthetase 1 of rat. *J. Biol. Chem.* 260:9346-9356.
27. Roise, D., S. J. Horvath, J. M. Tomick, J. H. Richards, and G. Schatz. 1986. A chemically synthesized pre-sequence of an imported mitochondrial protein can form an amphiphilic helix and perturb natural and artificial phospholipid bilayers. *EMBO (Eur. Mol. Biol. Organ.) J.* 5:1327-1334.
28. Takiguchi, M., S. Miura, M. Mori, M. Tatibana, S. Nagata, and Y. Kaziro. 1984. Molecular cloning and nucleotide sequence of cDNA for rat ornithine carbamoyltransferase precursor. *Proc. Natl. Acad. Sci. USA.* 81:7412-7416.
29. Yaffe, M. P., and G. Schatz. 1984. Two nuclear mutations that block mitochondrial protein import in yeast. *Proc. Natl. Acad. Sci. USA.* 81:4819-4823.
30. Yaffe, M. P., S. Ohta, and G. Schatz. 1985. A yeast mutant temperature sensitive for mitochondrial assembly is deficient in a mitochondrial protease activity that cleaves imported precursor polypeptides. *EMBO (Eur. Mol. Biol. Organ.) J.* 4:2069-2074.
31. Zoller, M. J., and M. Smith. 1982. Oligonucleotide-directed mutagenesis using M13-derived vectors: an efficient and general procedure for the production of point mutations in any fragment of DNA. *Nucleic Acids Res.* 10:6487-6500.
32. Zwizinski, C., and W. Neupert. 1983. Precursor proteins are transported into mitochondria in the absence of proteolytic cleavage of the additional sequences. *J. Biol. Chem.* 258:13340-13346.