

OVER A CENTURY OF QUALITY SCIENTIFIC PUBLISHING



Rockefeller University Press (RUP) is committed to quality and integrity in scientific publishing. We use the latest technologies and carry out rigorous peer review, applying the highest standards of novelty, mechanistic insight, data integrity, and general interest to fulfill our mission of publishing excellent science. Our nonprofit journals were established by the research community, and editorial decisions and policies continue to be driven by

scientists who actively contribute to their fields, appreciate the value of peer review, and desire a better publication experience for all.

Rockefeller University Press journals are indispensable assets to comprehensive life sciences collections at institutions that are engaged in cutting-edge research and train future generations of capable scientists.



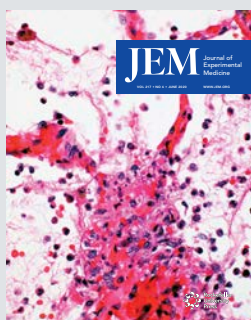
Journal of Cell Biology (JCB)

publishes advances in any area of basic cell biology as well as applied cellular advances in fields such as immunology, neurobiology, metabolism, microbiology, developmental biology, and plant biology. Est. 1955

2021 | Vol. 220
12 print and online issues | Articles published daily
Print ISSN: 0021-9525 | Online ISSN: 1540-8140
www.jcb.org

JCB Editor-in-Chief: **Jodi Nunnari**, Chair of the Department of Molecular and Cellular Biology, College of Biological Sciences, at University of California, Davis; Executive Editor: **Tim Spencer, PhD**

Total publications: ~**27,000** / total citations: ~**2.6M**
Impact Factor (IF): **8.811**
5-Year IF: **9.058**
IF rank in Cell Biology among primary research journals: **21**



Journal of Experimental Medicine (JEM)

publishes papers providing novel conceptual insight into immunology, neuroscience, cancer biology, vascular biology, microbial pathogenesis, and stem cell biology. Est. 1896

2021 | Vol. 218
12 print and online issues | Articles published daily
Print ISSN: 0022-1007 | Online ISSN: 1540-9538
www.jem.org

Editorial Board Co-Chairs: **Carl Nathan, R.A.** Rees Pritchett Professor and Chairman of the Department of Microbiology and Immunology at Weill Cornell Medicine; **Michel Nussenzweig**, Zanvil A. Cohn and Ralph M. Steinman Professor at The Rockefeller University, Investigator at Howard Hughes Medical Institute, and Senior Physician; Executive Editor: **Teodoro Pulvirenti, PhD**

Total publications: ~**24,700** / total citations: ~**2.5M**
Impact Factor (IF): **11.743**
5-Year IF: **11.984**
IF rank in Medicine, Research and Experimental among primary research journals: **4**
IF rank in Immunology among primary research journals: **5**



Journal of General Physiology (JGP)

publishes mechanistic and quantitative cellular and molecular physiology of the highest quality. Est. 1918

2021 | Vol. 158
12 print and online issues | Articles published daily
Print ISSN: 0022-1295 | Online ISSN: 1540-7748
www.jgp.org

JGP Editor-in-Chief: **David Eisner**, The British Heart Foundation Professor of Cardiac Physiology, Manchester University

Total publications: ~**8,900** / total citations: ~**415,000**
Impact Factor (IF): **3.628**
5-Year IF: **3.609**
IF rank in Physiology among primary research journals: **11**

LEARN MORE AND SPEAK TO YOUR REGIONAL CONTACT:

NORTH AMERICA

Rockefeller University Press Tel: +1 212 327 8590 subs@rockefeller.edu

LATIN AMERICA

ITMS Group Tel: +1 305 823 7766 info@itmsgroup.net

EUROPE

David Horky Tel: +31 88 4100400 david.horky@accucoms.com

MIDDLE EAST, AFRICA

Eyad Mohammad Tel: +962 77 5111 511 eyad@accucoms.com

INDIA

Yogesh Zope Tel: +91 11 457 19347 yogesh@accucoms.com

CHINA

Charlesworth China Tel: +86 10 87095751 info@charlesworth.com.cn

JAPAN

Kinokuniya Tel: +81 3 6741 9879 journal-inquiry@kinokuniya.co.jp

TAIWAN, HONG KONG

Tammy Chang Tel: +886 911 778 311 tammy@accucoms.com



2021 | Vol. 220
12 print and online issues | Articles published daily
Print ISSN: 0021-9525 | Online ISSN: 1540-8140
www.jcb.org

JCB Editor-in-Chief: **Jodi Nunnari**, Chair of the Department of Molecular and Cellular Biology, College of Biological Sciences, at University of California, Davis
Executive Editor: **Tim Spencer, PhD**

Total publications: ~27,000
Total citations: ~2.6M
Impact Factor (IF): **8.811**
5-Year IF: **9.058**
IF rank in Cell Biology among primary research journals: **21**

2019 Journal Impact Factor, Journal Citation Reports (Clarivate Analytics, 2020).
Total publications and citations gathered from Digital Science's Dimensions database July 2020.

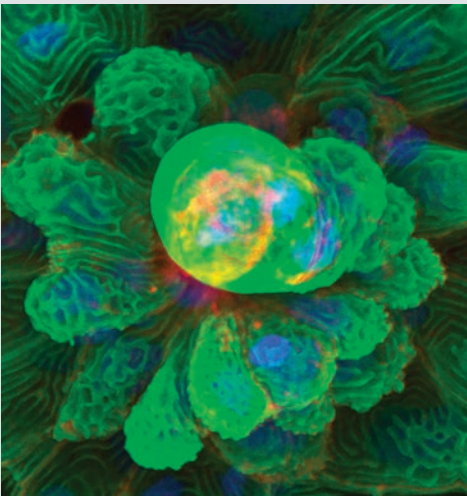
Journal of Cell Biology (JCB)

is a broad peer-reviewed journal that publishes original findings on all aspects of cell biology. The editors consider papers reporting new cellular or molecular advances in any areas of basic cell biology as well as papers that describe applied cell biology in a variety of systems including, but not limited to, immunology, neurobiology, metabolism, virology, developmental biology, and plant biology. JCB welcomes all submissions that describe new findings of significant interest to cell biologists, regardless of the experimental approach.

JCB traces its history to the early 1950s when a small group of biologists began to explore intracellular anatomy using the emerging technology of electron microscopy at institutions including The Rockefeller Institute of Medicine, the predecessor of The Rockefeller University. Since JCB was established in 1955, the discipline of cell biology emerged and developed on its pages, including the first descriptions of numerous cellular functions and structures. Today it publishes new science that shapes the current conversations in the cell biology community and presents pathways for exploration.

“JCB is the gold standard. You should provide workshops to other journals’ editors and staff on how to do the job.”

Gregory C. Rogers, PhD, Associate Department Head, Faculty Development, Cellular and Molecular Medicine, University of Arizona



©2019 Armistead et al. Originally published in *Journal of Cell Biology (JCB)* <https://doi.org/10.1083/jcb.201905190>

Journal of Cell Biology (JCB) is an essential addition to comprehensive life sciences collections at institutions engaged in cutting-edge research.

LEARN MORE AND SPEAK TO YOUR REGIONAL CONTACT:

NORTH AMERICA

Rockefeller University Press Tel: +1 212 327 8590 subs@rockefeller.edu

LATIN AMERICA

ITMS Group Tel: +1 305 823 7766 info@itmsgroup.net

EUROPE

David Horky Tel: +31 88 4100400 david.horky@accucoms.com

MIDDLE EAST, AFRICA

Eyad Mohammad Tel: +962 77 5111 511 eyad@accucoms.com

INDIA

Yogesh Zope Tel: +91 11 457 19347 yogesh@accucoms.com

CHINA

Charlesworth China Tel: +86 10 87095751 info@charlesworth.com.cn

JAPAN

Kinokuniya Tel: +81 3 6741 9879 journal-inquiry@kinokuniya.co.jp

TAIWAN, HONG KONG

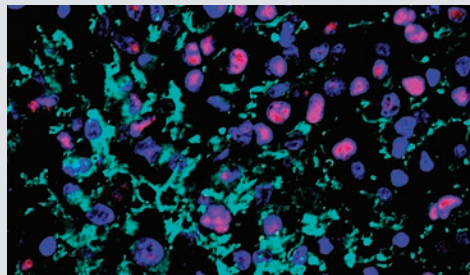
Tammy Chang Tel: +886 911 778 311 tammy@accucoms.com

Journal of Experimental Medicine (JEM) is a broad journal that publishes papers providing novel conceptual insight into immunology, cancer biology, vascular biology, microbial pathogenesis, neuroscience, and stem cell biology. The editors are interested in original findings on all aspects of disease pathogenesis, and consider papers reporting novel therapeutic approaches. JEM strongly encourages submissions of human studies.

JEM was founded in 1896 at the Johns Hopkins School of Medicine by William Welch, the school's founder and also the first president of the Board of Scientific Directors of The Rockefeller Institute, the predecessor of The Rockefeller University, which acquired the journal in 1905. Celebrating its 125th anniversary in 2021, JEM has served as a distinguished venue for publication of studies that integrate disciplines within the field of pathogenesis.

“The JEM has always been a journal I rely on to learn the latest on immune mechanisms of host protection and disease pathogenesis for me. The journal has also been instrumental for my career. I have published key studies in JEM, which helped with my visibility and reputation in the field, and became the basis for me being hired as a faculty in my institution. I continue to submit our lab’s exciting work there.”

Akiko Iwasaki, Waldemar Von Zedtwitz Professor of Immunobiology and Molecular, Cellular and Developmental Biology; Professor of Molecular Cellular and Developmental Biology, Yale University; Investigator, Howard Hughes Medical Institute



©2020 Zhan et al. Originally published in *Journal of Experimental Medicine (JEM)*
<https://doi.org/10.1084/jem.20191340>



2021 | Vol. 218
12 print and online issues | Articles published daily
Print ISSN: 0022-1007 | Online ISSN: 1540-9538
www.jem.org

Editorial Board Co-Chairs:

Carl Nathan, R.A. Rees Pritchett Professor and Chairman of the Department of Microbiology and Immunology at Weill Cornell Medicine
Michel Nussenzweig, Zanvil A. Cohn and Ralph M. Steinman Professor at The Rockefeller University, Investigator at Howard Hughes Medical Institute, and Senior Physician Executive Editor: **Teodoro Pulvirenti, PhD**

Total publications: **~24,700**

Total citations: **~2.5M**

Impact Factor (IF): **11.743**

5-Year IF: **11.984**

IF rank in Medicine, Research and Experimental among primary research journals: **4**

IF rank in Immunology among primary research journals: **5**

2019 Journal Impact Factor, Journal Citation Reports (Clarivate Analytics, 2020).

Total publications and citations gathered from Digital Science's Dimensions database July 2020.

Journal of Experimental Medicine (JEM) is a core journal for comprehensive life sciences collections at institutions engaged in cutting-edge clinical, translational and basic sciences research.

LEARN MORE AND SPEAK TO YOUR REGIONAL CONTACT:

NORTH AMERICA

Rockefeller University Press Tel: +1 212 327 8590 subs@rockefeller.edu

LATIN AMERICA

ITMS Group Tel: +1 305 823 7766 info@itmsgroup.net

EUROPE

David Horky Tel: +31 88 4100400 david.horky@accucoms.com

MIDDLE EAST, AFRICA

Eyad Mohammad Tel: +962 77 5111 511 eyad@accucoms.com

INDIA

Yogesh Zope Tel: +91 11 457 19347 yogesh@accucoms.com

CHINA

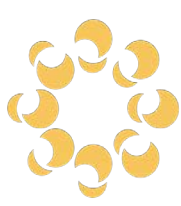
Charlesworth China Tel: +86 10 87095751 info@charlesworth.com.cn

JAPAN

Kinokuniya Tel: +81 3 6741 9879 journal-inquiry@kinokuniya.co.jp

TAIWAN, HONG KONG

Tammy Chang Tel: +886 911 778 311 tammy@accucoms.com

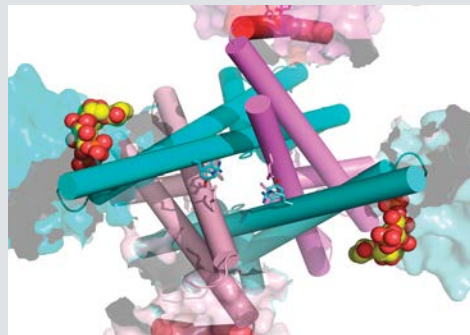


Journal of General Physiology (JGP) publishes peer-reviewed mechanistic and quantitative molecular and cellular physiology of the highest quality. Original work in JGP elucidates basic biological, chemical, or physical mechanisms of broad physiological significance. Editors welcome papers on membrane protein physiology; protein structure and dynamics; lipid and membrane biophysics; cell mechanics and contractile systems; and intracellular and intercellular signaling.

Founded in 1918 by Jacques Loeb, then a member of The Rockefeller Institute, JGP has provided a crucial forum for scientists from many disciplines to contribute to the growing pool of physiological knowledge, including the first measurements of “gating currents” associated with movement of the activation gates of voltage-activated sodium channels, “opening the gate” to a molecular understanding of the mechanisms whereby these channels function. Today it continues its tradition of publishing rigorous and exciting science and has also established early career programs to help to nurture future generations of independent researchers.

“I really like the editorial process at JGP. It’s rigorous and exacting, but friendly. There seems to be a sense of responsibility to moving the field forward. Every time I submit a paper to JGP, I feel I learn something new about my own data. The end result is a better paper—always!”

Tim Jegla, PhD, Associate Professor of Biology, Department of Biology, Penn State University



©2019 Shimomura and Kubo. Originally published in *Journal of General Physiology (JGP)*
<https://doi.org/10.1085/jgp.201812285>

Journal of General Physiology (JGP) is a necessary addition to comprehensive life sciences collections at institutions engaged in cutting-edge research.

LEARN MORE AND SPEAK TO YOUR REGIONAL CONTACT:

NORTH AMERICA

Rockefeller University Press Tel: +1 212 327 8590 subs@rockefeller.edu

LATIN AMERICA

ITMS Group Tel: +1 305 823 7766 info@itmsgroup.net

EUROPE

David Horky Tel: +31 88 4100400 david.horky@accucoms.com

MIDDLE EAST, AFRICA

Eyad Mohammad Tel: +962 77 5111 511 eyad@accucoms.com

INDIA

Yogesh Zope Tel: +91 11 457 19347 yogesh@accucoms.com

CHINA

Charlesworth China Tel: +86 10 87095751 info@charlesworth.com.cn

JAPAN

Kinokuniya Tel: +81 3 6741 9879 journal-inquiry@kinokuniya.co.jp

TAIWAN, HONG KONG

Tammy Chang Tel: +886 911 778 311 tammy@accucoms.com



2021 | Vol. 158

12 print and online issues | Articles published daily
Print ISSN: 0022-1295 | Online ISSN: 1540-7748

www.jgp.org

JGP Editor-in-Chief: **David Eisner**, The British Heart Foundation Professor of Cardiac Physiology, Manchester University

Total publications: ~8,900

Total citations: ~415,000

Impact Factor (IF): **3.628**

5-Year IF: **3.609**

IF rank in Physiology among primary research journals: **11**

2019 Journal Impact Factor, Journal Citation Reports (Clarivate Analytics, 2020).

Total publications and citations gathered from Digital Science's Dimensions database July 2020.